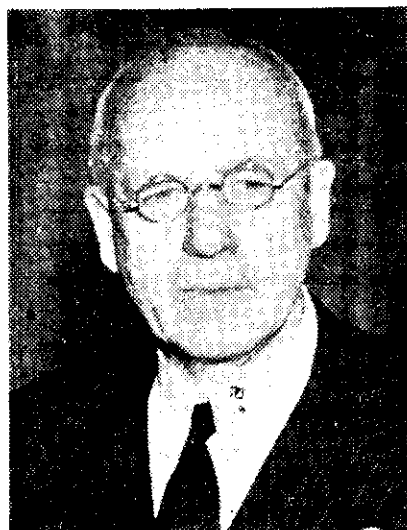


# PROGRAMME for NOVEMBER 27

## "The Listener's" Chart for Election Night



THE RT. HON. PETER FRASER, P.C.  
Leader of the Labour Party

### ★ State of the Parties ★

	OLD PARLIAMENT		NEW PARLIAMENT
Labour	44	Labour	
National	35	National	
Others	1	Others	
Total	80	Total	80

(The Auckland West and Nelson seats, formerly held by P. Carr (L) and H. Atmore (I) respectively, became vacant shortly before the end of the old Parliament's term through the death of these Members.)



S. G. HOLLAND  
Leader of the National Party

IN marked contrast to the 1943 Election, in which 291 candidates were nominated, the majority of seats will involve straight-out contests between the two main parties on November 27. At the time of going to press—and that was a bare 24 hours before nominations closed—there were 176 candidates for the 76 European and four Maori seats. Voters in the Northern Maori electorate had the widest choice, with seven candidates in the field, and in Hutt there was a quadrangular contest. In nine electorates there were three candidates to choose from, and in the remaining 69 only the two main parties were represented.

With fewer multiple contests, there are this year fewer political banners. In 1943, 19 different parties or groups—ranging from Christian Pacifists to the New Zealand Fighting Forces League Political—put up candidates. This time

there are only nine labels—Labour, National, Communist, Democratic Labour, Independent, Independent Labour, Independent Liberal, Independent Progressive, and Independent Revolutionary Socialist.

### Maori Election

POLLING in the Maori election will, as usual, take place the day before the European elections—that is, on November 26. Progress results will be broadcast at various times by Stations 1YA, 2YH, 2YN, 3YA, 3ZR, 4YA, and 4YZ, these stations linking with 2YA. The first link-up at 6.40 p.m. (2YN will not be on the air for this broadcast) will give a five-minute summary and others will follow during the evening. Full details of the coverage is given in a panel on page 36.

### New Members

WHATEVER way the voting goes, eleven electorates will have representatives who are new to the House.

The revision of electoral boundaries is the cause of this in the case of Eden, Mt. Victoria, Mornington, Petone, Pongsonby, Riccarton, Selwyn, Tamaki, and Waimarino. Retirement is the cause in Palmerston North, and in Nelson the death of the sitting member.

### Fewer Women Candidates

THE return of men from overseas, and possibly the relative abundance of male candidates for nomination, may explain the marked recession in the number of women candidates this year. Compared with 10 who went to the polls in 1943 there are only four: Miss Mabel Howard (L.), Sydenham; Mrs. A. Newlands (L.), Ashburton; Mrs. H. G. Ross (N.), Hamilton; and Mrs. A. L. Weston (N.), Wellington Central. Both Miss Howard and Mrs. Ross were Members of the old Parliament. Mrs. Weston is the widow of C. H. Weston, who had been selected to contest the Wellington Central seat but who died suddenly on November 10.

### Retirements

FIVE Government members—the Hon. P. C. Webb (Buller), the Hon. B. Roberts (Wairarapa), L. G. Lowry (Otaki), P. Neilson (Dunedin Central), and J. Hodgins (Palmerston North)—and two Opposition Members—the Hon. Adam Hamilton (Wallace), and W. J. Polson (Stratford)—have retired. P. Carr, who was Government Member for Auckland West, and who had announced his intention to retire, died recently.

### Boundary Changes

DETAILS of the voting strength in each constituency, and of the voting at the preceding election, have not been included in the Chart this year. Because of the revision of electoral boundaries, none of these figures could have provided a valid basis for comparisons.

## BROADCASTING THE RESULTS

PROGRESS results in the election of New Zealand's twenty-eighth Parliament will begin to come in shortly after the booths close at 7.0 p.m. on November 27, and all results as they come to hand will be broadcast. This means that everyone who has a radio will be able to follow the course of the contest by his own fireside. To help listeners make the most of the evening, we provide in the pages which follow this one an election chart on the same lines as the one which proved so popular with readers on election night in 1943. All that is needed with the chart is a sharp pencil—don't use ink on newsprint paper, it will only cloud the issue.

Details of the broadcasting arrangements for the evening will be found in the programme section, but the general scheme is as follows:

Stations 1YA, 2YH, 2YA, 3YA, 3ZR, 4YA, and 4YZ will link at 7.30 and remain linked throughout the evening. Summaries of the general position of the election will be given at 8.15, 9.15, 10.15 and 11.15 p.m.

Local results will be broadcast by 1ZB, 2ZB, 3ZB, 4ZB, 2ZA, 2ZJ, 2YB, and 2YN.

Programmes of music and other entertainment, with periodic summaries of Dominion results, will be provided by 1YX, 1ZM, 2YC, 2YD, 3YL, and 4YO.

All stations will link at 9.0 p.m. for the Chimes, when the main National stations will broadcast the weather report. The news broadcasts at 9.4 and 11.0 p.m. will be broadcast by 1ZM, 2YC, 3YL, and 4YO. No commercial announcements or sponsored programmes will be presented by the Commercial division after 7.0 p.m.



De Reszke

★  
of course

