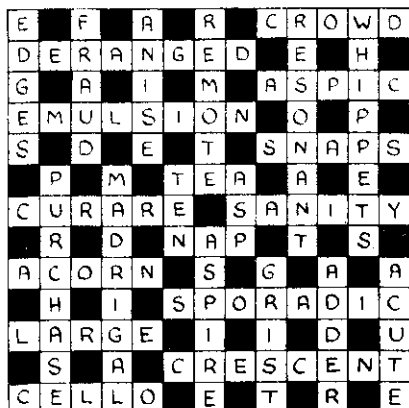


# THE LISTENER CROSSWORD

(Solution to No. 312)



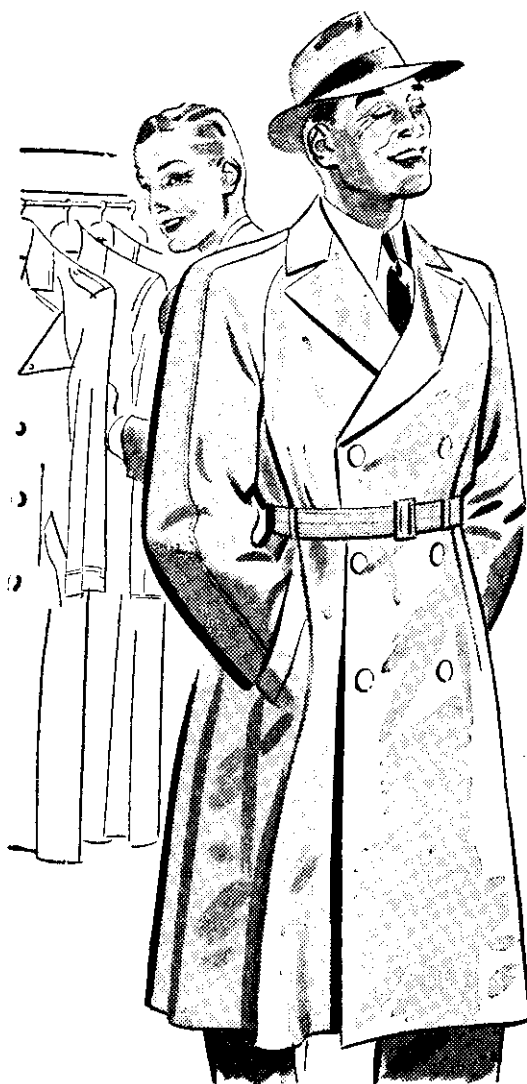
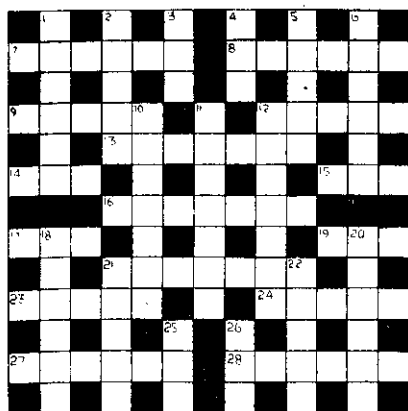
## Clues Across

7. "Better is a dinner of herbs where love is than a staked ox and — therewith." (Proverbs.)
8. Here you see the little devil play a part; its rather a blow!
9. Indian lady of rank.
12. Greek god who held up the universe.
13. Perils lurking in gardens?
14. Seventh letter to the Greeks.
15. Layer.
16. "He appointeth the moon for — seasons; and the sun knoweth his going-down." (Psalm 104.)
17. Custom found in a previous existence.
19. As Gert (or was it Dais?) remarked, "Don't talk to me about —es, that's wot our 'ash is!"
21. Taste us (anag.).
23. Prevailing craze.
24. A bird becomes furious.
27. Bishop's staff-bearer.
28. Come out, but not necessarily referring to a debutante.

## Clues Down

1. Hidden form of talent.
2. "She was beautiful as a butterfly And — as a queen Was pretty little Polly Perkins Of Paddington Green."
3. Bit of a fuss in the end of a violent storm.
4. Brevity is said to be its soul.
5. Taking too many might induce them before your eyes.
6. Cutting capers might lead you into this awkward predicament.
10. Mum gets round the business representative in a colourful battle.
11. Shake up.
12. I barter for the judge.
18. These old ones were featured as a serial.
20. Niggardly.
21. See 25 down.
22. Plenty of bargains to be had at these.
25. "There's not the smallest — which thou behold'st, But in his motion like an angel" (21 down). (Lorenzo, in "Merchant of Venice.")
26. Female swan.

No. 313 (Constructed by R.W.C.)



## IT'S JUST A CHANCE

Yes, it is still a matter of chance, we are sorry to say, whether you find your Rainster in the shops. They are still far from plentiful, and so many want them. But the position is rapidly improving.

Yes, there are a few more Rainsters in the stores now. Better than ever before. Their Rainster-proofing is thoroughly dependable, and their stickness of cut is something quite unexpected in a raincoat. A Rainster's a lucky find—good hunting to you sir!



## 'Good Mornings' begin with Gillette

This new Gillette No. 26 set is designed specially for your bathroom shelf. The Gillette razor is bright nickel plated, with a telescopic handle, extending to full length when screwed together. A new improved runner guard smooths the skin ahead of the blade edge thus giving a smoother and more comfortable shave. There are two Blue Gillette Blades.

All fits conveniently into a plastic container which combines razor stand with special compartment for used blades.



## BATHROOM SET — 6/6d —

Other Gillette sets from 3/8 to 9/3 All dealers. Blue Gillette Blades — 1/9 for 5 or 3/6 for 10.

5.6a