

# COLUMBUS

6-Volt (Vibrator Operation)

## BATTERY MODELS

The seven battery models illustrated here are designed for battery operation from 6-volt accumulator.

**Model 42** (5-valve broadcast) is a radio of average power designed with a view to quality of tonal reproduction with economy of battery consumption. A switching arrangement is provided to switch off the dial lights, thereby reducing the battery drain to 0.9 amps.

**Model 70** (6-valve dualwave) in alternative mantel or console cabinet designs is a model for high-power performance. It is ideal for long-range reception over a wide number of stations, broadcast and world shortwave. A dial light switch is provided for maximum battery economy, reducing battery consumption to 1.65 amps.

**Model 96** is the battery counterpart of the outstanding Columbus Model 90—the model which by virtue of its modernity and unique design has become almost famous throughout New Zealand. It is in all ways the perfect radio with calibrated bandspreading for shortwave, discriminatory tone control, peerless tonal quality and handsome appearance.

Battery drain is 1.75 amps with dial-lights and tuning indicator switched off.

### GUARANTEE OF PERFORMANCE AND SATISFACTION.

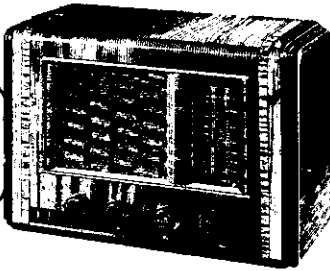
Every COLUMBUS Radio is unconditionally guaranteed. For twelve months after sale, we service and attend to each COLUMBUS, at its owner's request, absolutely free of charge. This guarantee is offered without any reservations whatever, and our services will always be promptly, courteously and gladly given. In that way we accept full and unqualified responsibility for the quality and reliability of every radio which bears our name.

## COLUMBUS RADIO

### NATION - WIDE SERVICE

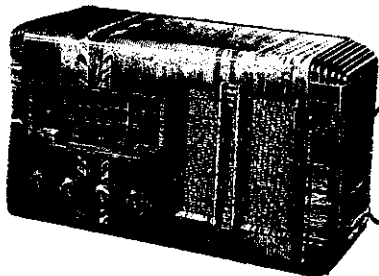
WHANGAREI, AUCKLAND, HAMILTON, GISBORNE, NAPIER, HASTINGS, DANNEVIRKE, TAIHAPE, NEW PLYMOUTH, WANGANUI, PALMERSTON NORTH, MASTERTON, WELLINGTON, NELSON, GREYMOUTH, CHRISTCHURCH, TIMARU, OAMARU, DUNEDIN, INVERCARGILL

£34



Model 42 "Corvette." 5-valve Broadcast with 8in. loudspeaker. Height 12½in.; Width 18½in.; Depth 9in.

£43



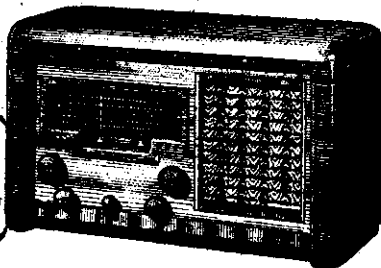
Model 70 "Warrior." 6-valve Dual-wave with 8in. loudspeaker. Height 12in.; Width 22in.; Depth 9in.

£54-10



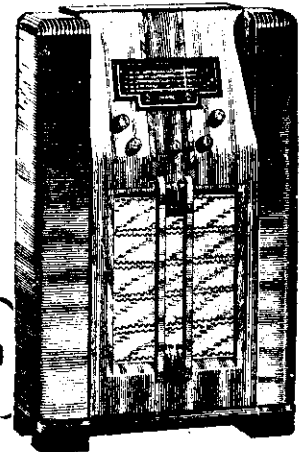
Model 70 "Discovery." 6-valve Dual-wave with 8in. loudspeaker. Height 39in.; Width 22½in.; Depth 12in.

£57-10



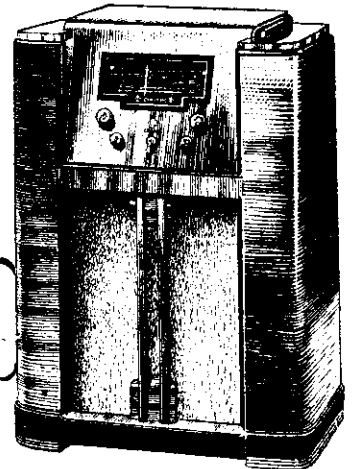
Model 96 "Endeavour." 7-valve with calibrated spread shortwave bands and 11-point Discriminatory Tone Control. 10in. loudspeaker. Height 14½in.; Width 24in.; Depth 11½in.

£69-10



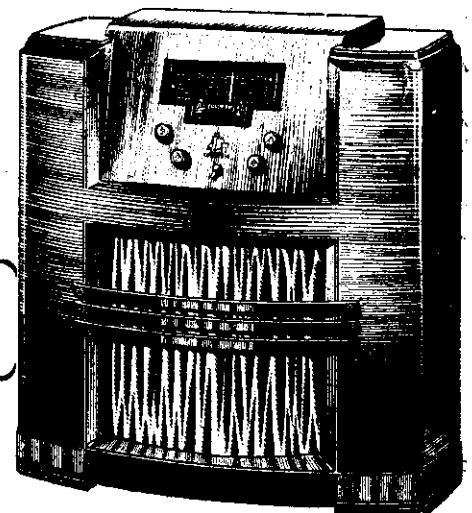
Model 96 "Escort." 7-valve with calibrated spread shortwave bands and 11-point Discriminatory Tone Control. 10in. loudspeaker. Height 39in.; Width 25½in.; Depth 13in.

£73



Model 96 "Convoy" (as above). Height 39in.; Width 27½in.; Depth 13in.

£82



Model 96 "Squadron" (as above). Height 38½in.; Width 36in.; Depth 14½in.