

NEW ZEALAND LISTENER

Incorporating N.Z. RADIO RECORD.

Every Friday

Price Threepence

EDITORIAL AND BUSINESS OFFICES:
115 Lambton Quay, Wellington, C.I.
Box 1707, G.P.O.
Telephone 46-520.
Telegrams: "Listener," Wellington.

AUGUST 30, 1946

CONTENTS	Page
Things to Come - - -	4
Editorial - - -	5
Letters from Listeners -	5 & 28-29
Pilgrim Toward Plenty -	6
War Histories - - -	7
Solomon Concert - - -	8-9
Radio Viewsreel - - -	10-12
ShortWave Notes - - -	13
Who's Who - - -	14-16
What is a New Zealander? -	17
Unconsidered Trifles - -	19
Miss Annie James - - -	20-21
Books - - -	22-23
People in the Programmes -	24-25
Aunt Daisy - - -	26-27
Twenty Years of Talkies -	30-32
The Giant Petrel - - -	33

BROADCAST PROGRAMMES
Mon. to Sun., Sept. 2-8 - 34-47

SUBSCRIPTIONS.

OVERSEAS. — Twelve months (including postage), Great Britain and British Countries, 17/6; Foreign Countries (including U.S.A.), 20/.

WITHIN N.Z. (Special Rates).—It paid in advance at any Money Order Post Office: Twelve months, 12/- six months, 6/- three months, 3/-.

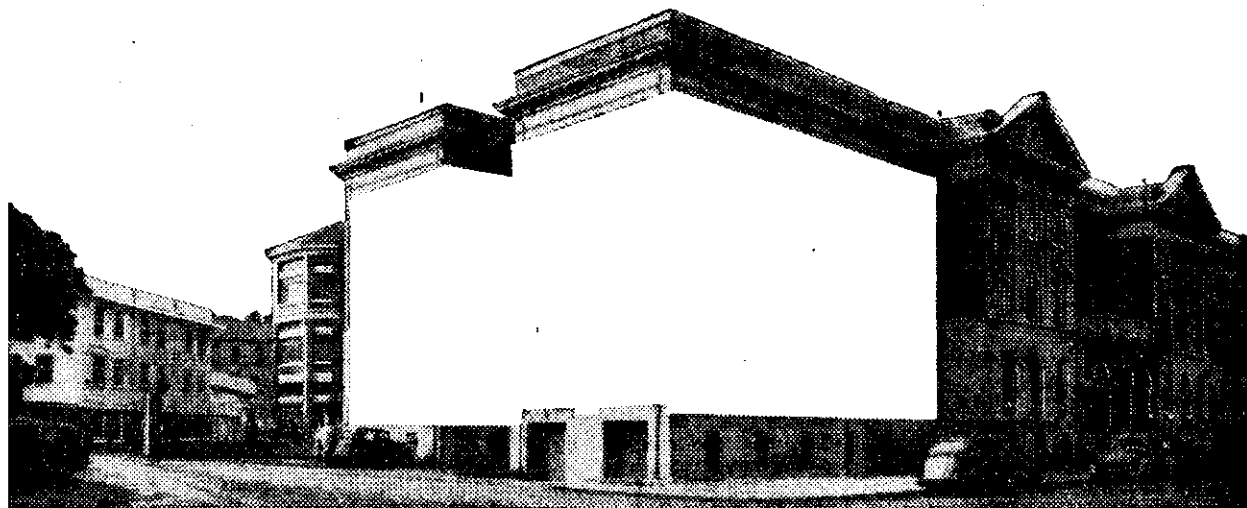
RENEWALS.—Two weeks' notice of renewal is required.

CHANGE OF ADDRESS. — Two weeks' notice required. Please give both the new and the old address.

Subscriptions may be sent to the "New Zealand Listener," Box 1707, G.P.O., Wellington.

ADVERTISING RATES.

Terms on application to the Business Manager, "New Zealand Listener," Box 1707, G.P.O., Wellington, N.Z.



All these wards of Wellington Hospital will be closed unless . . . Wellington Hospitals face a crisis! The sick are being turned away . . . only those urgently needing hospitalisation can be admitted. And—entire wards must be closed, unless more nurses become available. We appeal to Trained Nurses and to the womanhood of New Zealand: *Prevent this tragedy. Join the hospitals now.*

Nurses Needed Urgently

TRAINED NURSES for temporary duty

You are needed now for temporary duty of two to three months to overtake the present serious situation. Especially attractive Temporary Staff salary rates are offered. Please get in touch with the Matron-in-Chief.

CALL, WRITE OR
TELEPHONE (49-280)
The Matron-in-Chief
WELLINGTON
PUBLIC HOSPITAL

GIRLS 17 YEARS AND OVER TO TRAIN AS NURSES

Nursing offers you a distinguished career, of intense interest, with generous salary, free board and residence. Wellington Hospitals with most modern equipment, provide unique opportunities for training and advancement. The Matron-in-Chief will gladly give you all the information you want.

3.46

The Sauce Supreme!

A sauce of delightful piquancy and outstanding quality. Gives added flavour to meat, fish, game, and all dishes.

Gregg's NECTAR Worcestershire SAUCE

Manufactured by W. GREGG & CO. LTD., Pure Food Specialists, Forth St., DUNEDIN.

Change this scene of bad behaviour

with Califig's delicious flavour



Youngsters need no persuading to take delicious Califig — the laxative made specially for children. Children like its fruity flavour, and when they are "off colour" its gentle but effective action soon has them back to normal again.

Califig
(CALIFORNIA SYRUP OF FIGS)
The Gentle Laxative

N.Z. Distributors: Fassett & Johnson Ltd., Levy Bldg., Manners Street, Wellington.

4.6a