

(continued from previous page)

"It's pretty rigorous, but not unendurable. There are many days when the sun is not seen, but on the few bright days we can sunbathe."

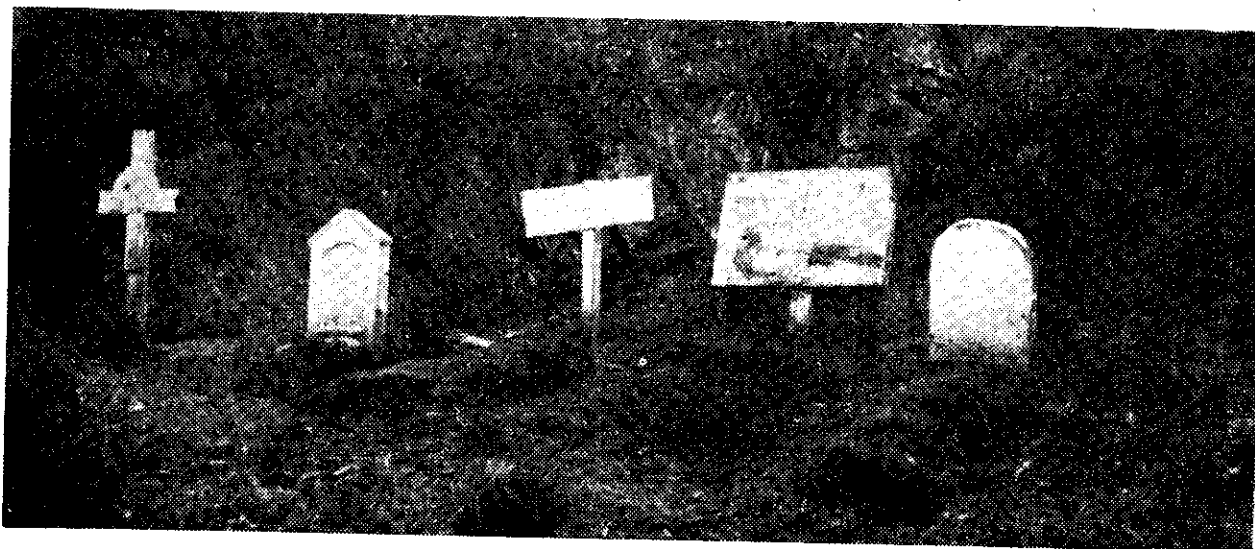
"How are you transported to and from?"

"A ketch, the Ranui, built at Stewart Island does that work. By direct sailing from Wellington the trip takes six days. But the weather is so uncertain that it is generally inadvisable to take the direct course. We call at Dunedin for the last of the stores, shape a course for the Snares, and then go on to Auckland Island, from which Campbell Island is a 23 hours' run."

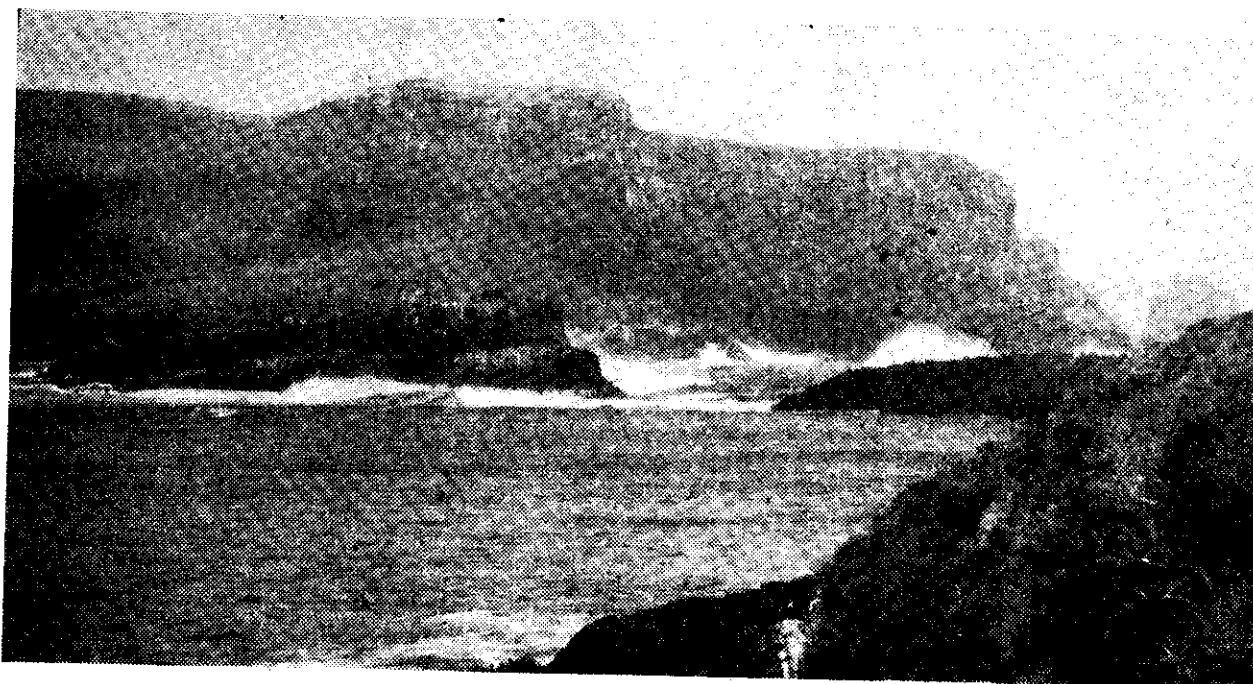
The whole of this organisation is operated by the Public Works Department's Aerodromes Service, and nothing that might contribute to the welfare of the party is overlooked. Mr. Sorensen told us. For instance, a doctor was sent to the island to give him some medical training. That knowledge came in very usefully when the recent appendicitis case cropped up.



THE EASY-GOING LIFE: J. H. Sorensen is fifth from left (with pipe) in this Campbell Islands group



LONELY CEMETERY at Port Ross, in the Auckland Islands



THE THUNDER of the surf: The steep bastions of the Auckland Islands

# What is a good Eye Lotion?

First of all it is a Lotion—that is, a LIQUID medicinal preparation.

Secondly, it is a Lotion which is prepared, not in the factory, not even in the home, but in the aseptic conditions of the laboratory.

Thirdly, it is a Lotion that is kind to the eye—like its own natural fluid.

Fourthly, it is a Lotion that can safely be used for all eyes of all ages, at all times, whatever their state of health or sickness.

Fifthly, it is a Lotion that your eyes can go on using, however frequently or copiously it is applied.



## EYE LOTION

answers all these requirements, but some essential ingredients are still hard to get and supplies are not plentiful at the moment.

Please don't blame your chemist—he'll have supplies later.

Optrex (Overseas) Ltd., 17 Wadsworth Road, Perivale, Middlesex, England

7.4

### LOOK AHEAD!

Young men wanting to get on look ahead to the time when they occupy good positions and are financially secure. I.C.S. training will achieve this for YOU! Choose a Course and spend some of your spare time in study—it will be your best investment.

Radio Engineer	Salesmanship
Electrical Eng.	Advertising
Mech. Drafting	Accountancy
Works Manager	Architecture
Refrigeration	Journalism
Motor Mechanic	Plastics

Above are some of the 300 I.C.S. Home Study Courses in which the student is carefully trained. No matter where you live, the Schools come to you, the I.C.S. being the largest Educational Institution in the world. Send NOW for Free Prospectus, stating your subject, trade or profession.

INTERNATIONAL CORRESPONDENCE SCHOOLS,  
Dept. L., 182 Wakefield St., Wellington.