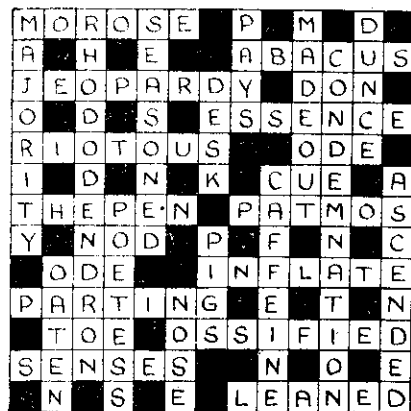


THE LISTENER CROSSWORD

(Solution to No. 299)



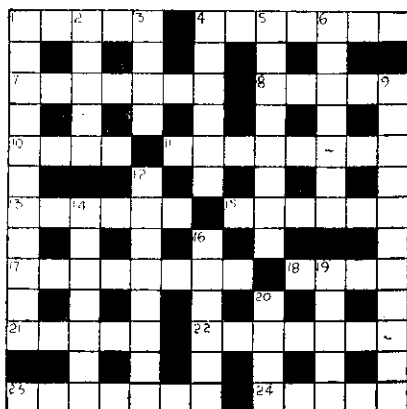
Clues Across

1. A fireside game?
4. This fateful river looks like an instruction to polish the image.
7. Fruit of transgressions following a broken melody.
8. Regal in a big way.
10. Necessity in a fine education.
11. "Make mad the guilty, and appal the free; Confound the ———." (Hamlet, Act 2, Sc. 2).
13. Reverse the syllables of this emotion to describe the cardinal's headdress.
15. Poetically before after the vehicle for one's way of making a living.
17. Soon ours may be resonant.
18. Bean found in the mai?
21. "It was, as I have seen it in his life, A ——— silvered." (Hamlet, Act 1, Sc. 2).
22. Member of the University which was the subject of the Sunday night talk of June 2.
23. London district formerly noted for buns, porcelain, and its literary and artistic residents.
24. "She ——— in thought, And, with a green and yellow melancholy, She sat, like Patience on a monument, Smiling at grief." (Twelfth Night, Act 2, Sc. 4).

Clues Down

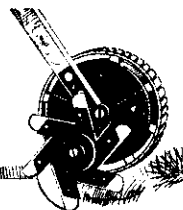
1. He is found (in brackets) between his father—or mother, may be—and half-sister.
2. If Ken offers one.
3. Remove the end of 1 down from 7 across for the title of a play by Somerset Maugham.
4. If out of order, a singer may do this.
5. Roam with ball into a famous castle.
6. Ran in confusion into a cage—if it's a lion's, the result would naturally be this.
9. Amused with tee at dinner.
12. Encourages with ten bares.
14. Talented under half-a-score—this can be maintained against attack.
16. Her wedding is the subject of a ballet.
19. His punishment was to revolve eternally on a wheel in Hades.
20. Splendour.

No. 300 (Constructed by R.W.C.)



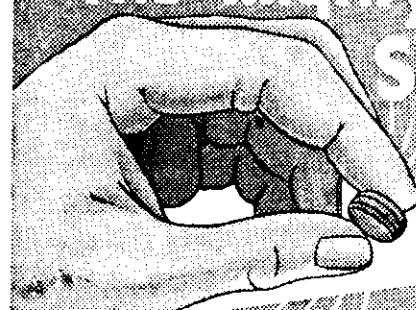
LAWN EDGE TRIMMER

The "LAWNBOY" saves hours of back breaking work. Trims the grass edges of lawns neatly and quickly — no bending — handle same length as lawn-mower. Six cutting blades. Specially made for use on EARTH EDGES 77/6 each, postage 2/9.



SKEATES & WHITE LTD., 48 Fort Street, Auckland.

The Mighty Atom for SORE THROAT



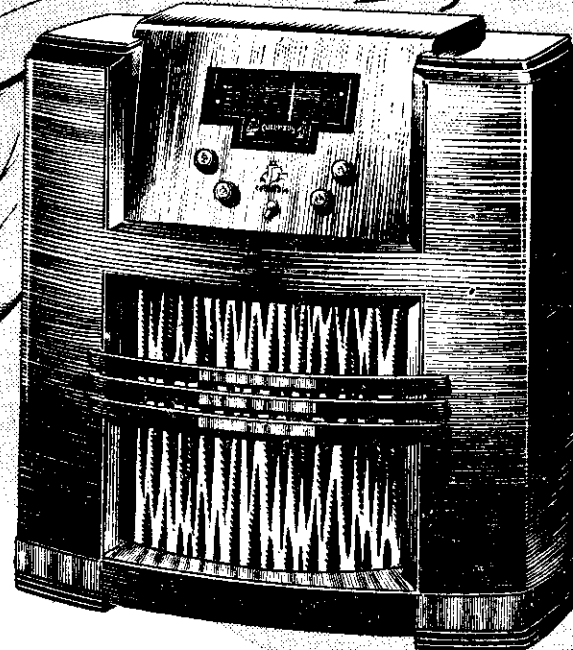
Pulmonas

Stacey Bros. Ltd., 385 Khyber Pass, Auckland.

LOOK TO COLUMBUS MODEL 90 FOR

RICH

beauty



THERE is beauty that captivates and charms the eye . . . and it is here in the handsomely proportioned cabinets that house Columbus Model 90, accented by sweeping lines, richly figured veneers and harmoniously chosen brocades for the speaker grille closures.

And there is beauty that is functional—that pleases because of its fitness for purpose . . . and you'll find that kind of beauty in Model 90, too. For the cabinet proportions, the size of the speaker opening and the area provided for "baffle" represent complete technical answers to the scientific requirements of acoustics and sound reproduction. That's another reason why the beauty of a Columbus Model 90 Cabinet finds echo in its glorious voice.

NATION WIDE SERVICE: Whangarei, Auckland, Hamilton, Rotorua, Gisborne, Napier, Hastings, Dannevirke, Taihape, New Plymouth, Wanganui,

**COLUMBUS
RADIO**

Palmerston North, Masterton, Wellington, Nelson, Greymouth, Christchurch, Timaru, Oamaru, Dunedin, Gore, Invercargill.