

HIGHLIGHTS ON THE SHORTWAVE BAND

Australian Overseas Programmes

THE Australian Overseas Shortwave Services carry, in addition to an extensive Far Eastern Service in foreign languages, broadcasts in English to Great Britain, U.S.A. and their forces overseas.

Broadcasts in English may be heard at the following times:

Forces Programmes

2.0 p.m.-4.0 p.m. (Saturday, 2.0 p.m.-7.30 p.m.).

VLA6 15.2 m/c, 19.74 metres.

VLC6 15.23 m/c, 19.69 metres.

U.S.A. Programmes

5.10 p.m. - 5.45 p.m.

VLC4 15.32 m/c, 19.59 metres.

VLG3 11.71 m/c, 25.62 metres.

Great Britain Programmes

8.0 p.m. - 8.55 p.m.

VLC8 7.28 m/c, 41.21 metres.

General Programmes

9.0 p.m. - 10.0 p.m.

VLC6 9.615 m/c, 31.2 metres.

VLG3 11.71 m/c, 25.62 metres.

Forces Programmes

8.30 p.m. - 12.15 a.m.

VLA6 15.2 m/c, 19.74 metres.

Overseas and local news bulletins may be heard at the following times:

2.0 p.m., on 15.2 m/c, 19.74 metres

5.15 p.m., on 15.315 m/c, 19.59 metres.

7.30 p.m. - 8.30 p.m., on 7.28 m/c, 41.21 metres.

9.0 p.m., on 9.615 m/c, 31.20 metres; on 15.2 m/c, 19.74 metres.

Programmes of Topical Interest

"They Made Good in Australia," 5.15 p.m., Tuesday, on 15.32 m/c, 19.59 metres.

"Agricultural Bulletin," 5.35 p.m., Tuesday, on 15.23 m/c, 19.69 metres.

"Canberra Report," 7.40 p.m., Tuesday, on 7.28 m/c, 41.21 metres.

"Story of Australian Capital Cities," 5.25 p.m., Sunday, on 15.32 m/c, 19.59 metres.

Sporting Activities

A very comprehensive coverage of Sydney and Melbourne sport, including races, cricket, tennis, rowing, etc., may be heard on Saturday afternoon from VLA6, 15.2 m/c, 19.74 metres, from 2.0 p.m. - 7.30 p.m.

"Racing Acceptances," on Thursday and Friday, 9.10 p.m., 11.71 m/c, 25.62 metres.

"Sports Round Up," on Wednesday, 9.30 p.m., 9.615 m/c, 31.21 metres.

PREVIEW OF WINTER COURSE TOPICS

HEAD OFFICE of the NBS and the Advisory Committees in the various centres have been busy lately drawing up the schedules for the Winter Course Talks for 1946.

Because Monday is its night, 2YA will lead off on Monday, April 29, at 7.15 p.m. The opening series will be a review of Pacific history and problems from the New Zealand angle, and Professor F. L. W. Wood, Professor of History at Victoria University College, will give the introductory talk on April 29. He will be followed by Dr. G. H. Scholefield, on Pacific history; George Lawn, on the economics of the Pacific; Dr. Ernest Beaglehole, on "Clash of Cultures"; and Professor Leslie Lipson, on "Peace Comes to the Pacific."

This series will be followed by one on the development of the novel, by Professor Ian A. Gordon. Station 2YA also plans a series on "Science and the

Community," and will have something to say later about the history of the political franchise—this is election year.

At Auckland, 1YA will lead off with a series, "Insects and Man," of which the opening talk (on May 2) will be given by Dr. W. Cottier, of the Plant Research Bureau. This station is also contemplating a series on the history and principles of criticism, and others on the position of the engineer in society, and present-day trends in education.

The first series at 4YA will be "The University and the Modern World," and the first talk will be given on April 30 by Dr. K. J. Sheen. Among the other speakers will be Professor D. D. Raphael, newly appointed professor of philosophy at the University of Otago, who speaks with experience of British universities. Another prospect for the 4YA course is "Lakeland and Fiordland," a series of talks on the characteristics of this region in Otago and Southland.

The schedule from 3YA will be announced shortly.

Don't Miss
Next Week's "Listener."

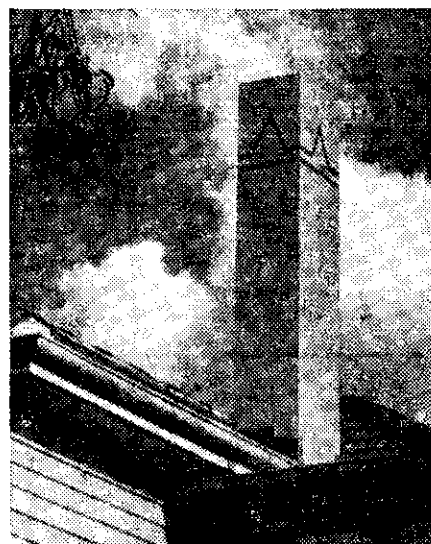
Order Your Copy in Advance
from Your Newsagent.

RADIO

Send for our Latest Catalogue. The
Most Comprehensive Range in N.Z.

TRICITY HOUSE

209 MANCHESTER ST., CHRISTCHURCH



Photographs showing how
easy it is to erect a B & B
Concrete chimney.



SAY MISTER—

YOU COULD PUT
IT UP YOURSELF

No chimney was ever so easy to erect. The builder can't go wrong. With the pictorial directions you could put it up yourself. Extraordinarily light; only quarter the weight of brick. B & B concrete chimneys are also cheaper to erect than brick, and take up less room. They are of a simpler, safer, more efficient construction—fewer joints, and every one tongued-and-grooved.

They draw with a minimum of eddies because they are scientifically designed to do so. The inside's as smooth as steel pipe to give clear, sweet flow of smoke. (Left to the whim of the workman in other chimneys).

Pumice is one of the finest, lightest, most fireproof of all insulating materials. You have these virtues at their very best when you instal a pumice concrete chimney from the firm which has specialised in them for 20 years!

Ask at any reputable hardware store or write
or ring **B & B Concrete Co. Ltd.**,
Crownhurst St., Newmarket, Auckland.



CHIMNEYS

Special packing and despatch department
deals with orders quickly, efficiently.

B & B CONCRETE CO. LTD.

Newmarket, Auckland