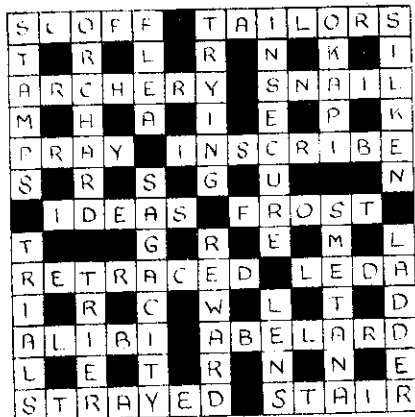
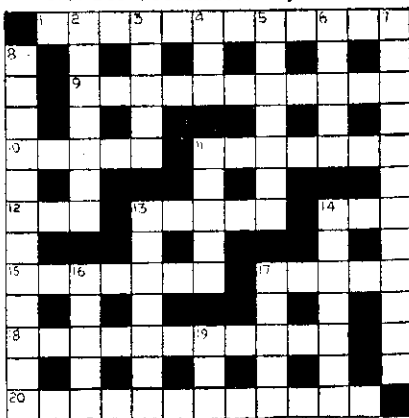


THE LISTENER CROSSWORD

(Solution to No. 282)



No. 283 (Constructed by R.W.C.)



Clues Across

1. At Turin Alice is apparently tongue-tied.
9. Last but not one.
10. Escape from.
11. A prefatory discourse about an abbreviated weight in reverse certainly presents a difficulty to be solved.
12. Fair Elaine conceals her anger.
13. "Ah, did you once see Shelley — And did he stop and speak to you. . . ." (Robert Browning.)
14. Saw through the looking glass.
15. Flags concealed in the guinness.
17. Child of the brain.
18. Intimidating, but behead it, transpose one letter, and the result is inspiring.
20. The girl hated to be carefree.

Clues Down

2. That which is mightier than the sword suffers a reverse over a melody; the result is to be found in the sky.
3. A form of siren.
4. Not at all well.
5. According to the old rhyme, he and the lion came to blows over the crown.
6. Servé.
7. Dependent on alms.
8. Expert menial is nevertheless upset.
11. Speak for the highest points.
13. Buttons over an industrious insect in a brilliant show.
14. Twist about.
16. Movement of contempt or annoyance.
17. "Oh, how full of — is this working day world!" ("As You Like It," Act I, Sc. 3.)
19. "By thy long grey beard and glittering — Now wherefore stopp'st thou me?" ("Rime of the Ancient Mariner.")

(continued from previous page)

would be needed; and how much extra sugar should I add? The directions on the tin are:—4lb. sugar to 5lb. fruit pulp. Hoping you will be able to help me as you have done for thousands of others like me; and wishing you the best of luck in your grand work.

E.M.K., Epsom.

Yes, you could "stretch" your raspberry jam by adding, say, a couple of pounds of apple pulp or plum pulp, and sugar in the proportion of $\frac{3}{4}$ lb. to a pound of pulp. Boil the apples or plums first with very little water, and strain resultant pulp through wire strainer, to make it as nearly as possible the same consistency as the raspberry pulp. Weigh or measure and allow sugar as above— $\frac{3}{4}$ cup sugar to 1 cup pulp. Bring all the pulp to the boil add the warmed sugar, stir till dissolved, then boil fast until jam will set when tested. It will not take very long. Do not put too much apple or plum, or you will spoil the flavour of your raspberry.

For Coughs & Colds

W. E. WOODS LTD.
LAMBTON QUAY, WELLINGTON.

due to the belief that, with an e

Get Reliable

WOODS'

Great

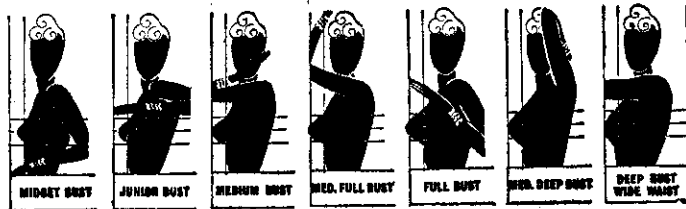
PEPPERMINT CURE

The beauty nature intended

The beauty nature intended . . . with the aid a Berlei gives! A girl's figure is nothing without a bosom; and a bosom is nothing without a Berlei-Bra!

The very special something about a Berlei-bra is that each size comes in many different shapes . . . to fit subtle differences in bosomy curves. There might be anything up to seven different types in your own fair size, for instance; you are sure of your own perfected shape amongst them. It is multiple-fitting come to brassieres. And oh, oh, oh, the difference it can make to comfort as well as looks, being so fittingly, so beautifully Berleified!

★ Try it on before you buy it. Now there's little elastic, it has to fit exactly.



Berlei-bra