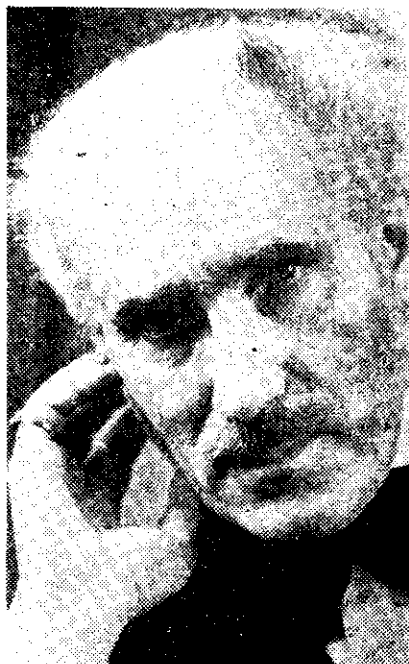


PROGRAMMES



ARTURO TOSCANINI, conductor of the NBC Symphony Orchestra, in the recording to be heard from 1YA on May 6. The major work will be Beethoven's Symphony No. 6 ("Pastoral")



Spencer Digby photograph
OLIVE CAMPBELL, who will be the soloist with the 4YA Concert Orchestra in a studio presentation of Rachmaninoff's Piano Concerto No. 2 from 4YA on Thursday, May 3



A new photograph of 4ZB announcer,
ALEC McDOWELL



The English author **L. A. G. STRONG**, whose play "Dinner With a Novelist" will be heard in a BBC programme from 1YA on Tuesday, May 1



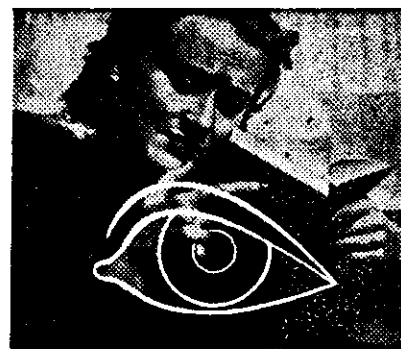
FLORENCE ANN CORNSTOCK (contralto), heard in "Songs of Good Cheer" from 2ZB at 10.15 a.m. on Fridays and Saturdays and 4ZB on Thursdays at 7.45 p.m.



HOWARD HANSON, American conductor-composer, whose Second Symphony will be heard in a U.S.A. programme from 3YA on Sunday, May 6. It will be played by the NBC Symphony Orchestra conducted by Dr. Frank Black



BBC photograph
ARTHUR BLISS (right) with **SIR ADRIAN BOULT**, who conducts the Liverpool Philharmonic Orchestra in the new recording of Arthur Bliss' Concerto for Piano and Orchestra to be heard from 2YA on Sunday, May 6



The care of the Eyes in the Home

Here are a few simple hints that will help keep your eyes healthy and comfortable.

- (1) Sleep with the window well open. Fresh air benefits the eyes.
- (2) Don't read facing or backing the window. Arrange if possible, for the light to come over your left shoulder.
- (3) Never rub the eye if you have a piece of dirt in it, or if you have a stye or boil. Always bathe the eye and if the trouble persists, consult a doctor.
- (4) Don't read in bright sunlight or twilight.
- (5) If you have the slightest doubt as to the efficiency of your sight, consult a Qualified Practitioner at once.

Issued by the makers of



EYE LOTION

In the Interests of Ocular Hygiene

Optrex (Overseas) Ltd., 17 Wadsworth Road, Pexide, Middlesex, England.

10.4

TROLLEY WHEELS



Strong Iron Trolley Wheels, two sizes. Price per pair, complete with 18in. axle, 4 1/2in., 8/-; 5in., 6/6. Postage on one pair, 1/3d; postage on two pairs, 2/-.

Skates & White Ltd., 48 Fort St., Auckland.