

...“I see you’re  
using it too”...



**1/2<sup>d</sup>**  
ALL STORES

Yes it used to be hard work cleaning windows... time-wasting, hand-spoiling work... Windolene takes the drudgery out of window cleaning... quick to polish, and saves your hands from water roughness. Get a bottle to-day.

**WINDOLENE**  
*The Window Cleaner*

Reckitt & Colman (New Zealand), Ltd., Bond Street, Dunedin.

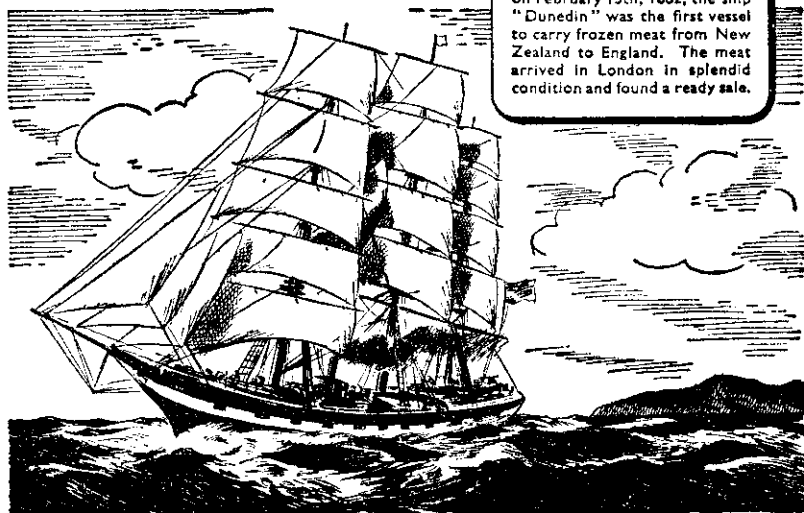


WB

## Builders of New Zealand

### FIRST CARGO OF FROZEN MEAT LEAVES NEW ZEALAND

Clearing Port Chalmers Heads on February 15th, 1882, the ship “Dunedin” was the first vessel to carry frozen meat from New Zealand to England. The meat arrived in London in splendid condition and found a ready sale.



THE invention and development of refrigeration probably more than anything else has made New Zealand one of the most prosperous countries in the world. Twelve years before the first shipment of frozen meat left this country, the Government Life Insurance Department commenced operations. This great National Institution for three-quarters of a century has brought protection and security to the homes of the people, and, by the investment of the whole of its funds in New Zealand, has assisted materially in the development of the country. Assure your future by insuring with the...

## GOVERNMENT LIFE

The Pioneer  
New Zealand Office  
Established — 1869



INSURANCE  
DEPARTMENT

16



**“HOW DID YOU DO IT?”**  
**“HOW DO BSA DO IT?”**

Anyone who has the good luck to get hold of a B.S.A. Bicycle nowadays is a man to be envied. “How did you do it—where did you get it?” ask his jealous friends. That wartime B.S.A. Bicycles should be so particularly sought after is a tribute to the way B.S.A. do it. If there’s anything in omens, post-war B.S.A. Bicycles will beat even past B.S.A. records. The only rival to their perfect performance will be their splendid appearance.

Some more B.S.A. Bicycles are now coming into the country. Ask your dealer if he has one available for you—you may be lucky. Or—put your name down and be sure of it when it arrives.

**B.S.A. Representatives:**  
Bicycles:  
A. G. Healing & Co. Ltd.,  
216 Madras St., Christchurch,  
and 42 Cable St., Wellington.  
Auckland District:  
Sheates & White Ltd.,  
48 Fort Street, Auckland.  
Motor Cycles—N.Z.:  
Sheates & White Ltd.

**BSA**  
BICYCLES AND  
MOTOR CYCLES  
B.S.A. Cycles Ltd., England.