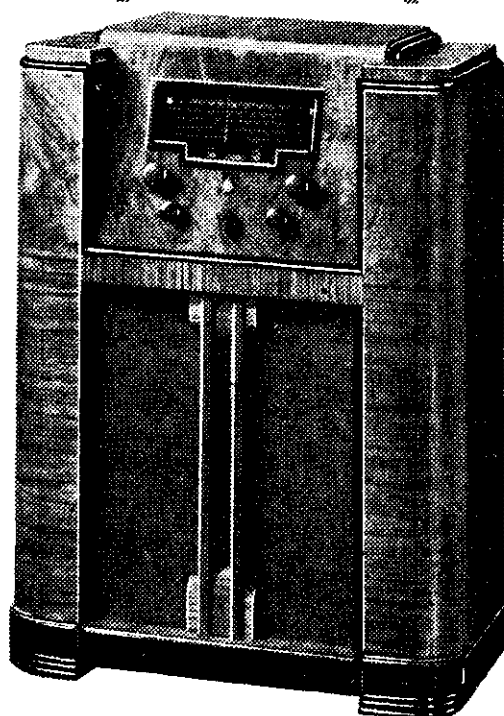


*Columbus*  
**BANDSPREAD**  
**DIAL** to bring  
 broadcast ease to  
 shortwave tuning

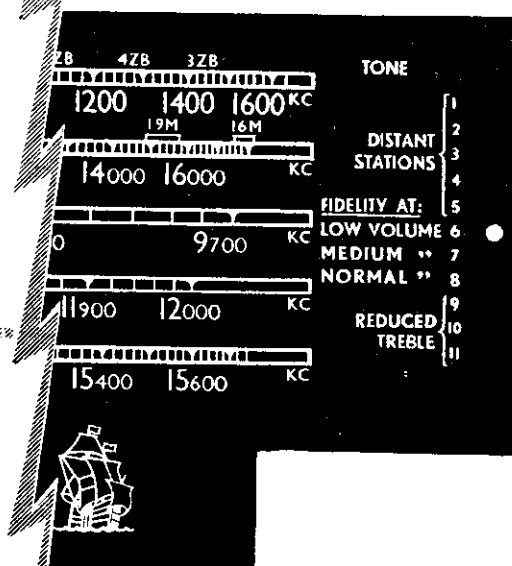
Ever been in a crowded tram or bus — everyone talking in your ear . . . no room to move? Then suddenly dozens get out . . . you have elbow room . . . a seat . . . and you can talk without other conversation overlapping. Well, that's just the difference between Columbus Band Spread tuning and ORDINARY shortwave tuning. Columbus has given elbow room to ALL overseas stations by spreading shortwave stations 25 times further apart. Now stations are more easily tuned than on broadcast! Just turn to the station frequency and you're there! It's another GREAT Columbus feature.



# COLUMBUS

## RADIO

No other  
 radio  
 dial...  
 not one...  
 has  
 both  
 these  
 features



*Columbus*  
**ELECTRONIC**  
**EAR** to give you  
 ALL the music

If you think that you get ALL the music on your radio, just try this! Turn the volume down . . . right down low . . . until you can just hear the music softly. Listen carefully, and you'll find that the music's thinned out . . . yes . . . you've LOST the high and low notes! That's what scientists call "scale distortion."

Columbus restores those missing notes with the Electronic Ear, which gives you ALL the music, no matter what volume . . . and gives you fully balanced, crystal-clear reproduction on all wavebands. Experience it for yourself.