

# PEOPLE IN THE PROGRAMMES



Left: **EILEEN ROACHE** (pianist) will give a studio recital of Schumann's "Papillons" from 2YA on Monday, August 14.

Right: **FERDE GROFE**, American symphonic jazz composer, who will speak in the "America Talks to New Zealand" programme from 3YL on Monday, August 14. Parts of his "Grand Canyon" Suite will be heard in the same programme.



Below: **BETTY HANNA** plays Mrs. Du Val in "Lovernaking, Incorporated," which begins from 1ZB on August 11, and from 2ZB on August 25.



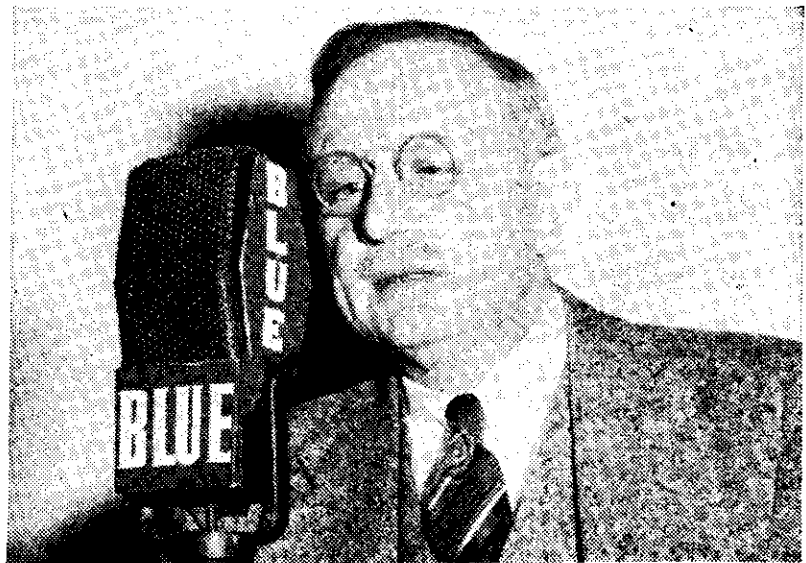
**BEATRICE HALL** (contralto) will be heard from 3YA on Wednesday, August 16.



Alan Blakey photograph  
**HARRY WOOLLEY**, conductor of the Royal Auckland Choir, which will give a studio recital from 1YA on Saturday, August 19.



**JOHN TATE** plays Mr. Knightley in "Emma," the serial version of Jane Austen's novel. It is heard from all ZB stations on Mondays.



**H. R. BAUKHAGE**, American newspaperman and radio commentator, who is heard in the session "What the American Commentators Say."