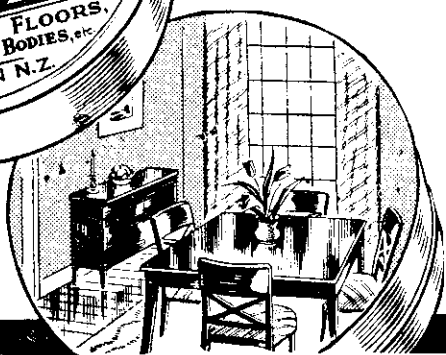




*A healthy  
polished home  
in every tin*

Antiseptic Poliflor  
Cleans as it Polishes.  
Also Dark Poliflor  
for dark wood floors  
and furniture.



434

*Elegance*



*Matchless*



BY DUCKWORTH, TURNER & CO LTD



A party of college students on their way to a field demonstration pause for a moment to admire the view from Mount Stuart, on which the Sandon district war memorial stands.

## MUCH ADO AT MASSEY COLLEGE

*Ex-Servicemen and Women as Students*

A HECTIC period of planning to meet the record number of student enrolments has been necessary at Massey Agricultural College, Palmerston North, this year. The unprecedented number of students has been due largely to many ex-servicemen having taken advantage of the Rehabilitation Board's scheme for training men for the land; and also to the strong support, from both young men and young women, given to the newly-introduced course in horticulture. Ex-servicemen comprise roughly one-third of the total enrolments.

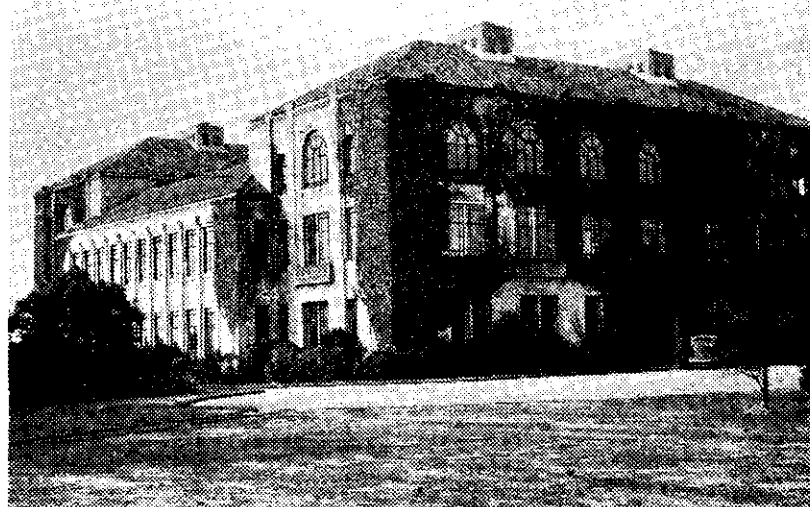
Fortunately the College authorities were fully prepared for the rush. The Board of Governors had for months been planning to meet the post-war needs of agriculture, and their forecast that there would be a strong "back-to-the-land" movement even before hostilities had ceased has been proved true. Some of the ex-servicemen have of course had experience of farming, and need only a refresher course in modern agricultural developments before going on to properties of their own. Others wish to begin at the beginning.

The large enrolment of young women for the College courses has been met

by the acquisition of the old Monro homestead block of 12 acres along the terrace adjoining the College land. This homestead block carries a 14-roomed house which is now being used as residential quarters for the girls, who include quite a number taking the general farming, as well as the horticultural, course. An annexe of former Army huts has already been necessary. Pressure on accommodation space will be increased next year, when further enrolments will be made for the two-year horticultural course.

New appointments to the College staff have also been necessary this year since instruction in farm engineering has been added to the College course to meet the increasing mechanisation of farming operations. It is felt by the College authorities that the post-war world will see many of the scientific and mechanical developments for warfare converted or modified to suit agricultural purposes; and that a thorough grounding in engineering principles is necessary if the farmer of to-morrow is to take advantage of these developments up to the limits imposed by economics and profit-making.

—B.A.L.



A view of the rear of the Massey College main building, which is steadily being covered with Virginian creeper.