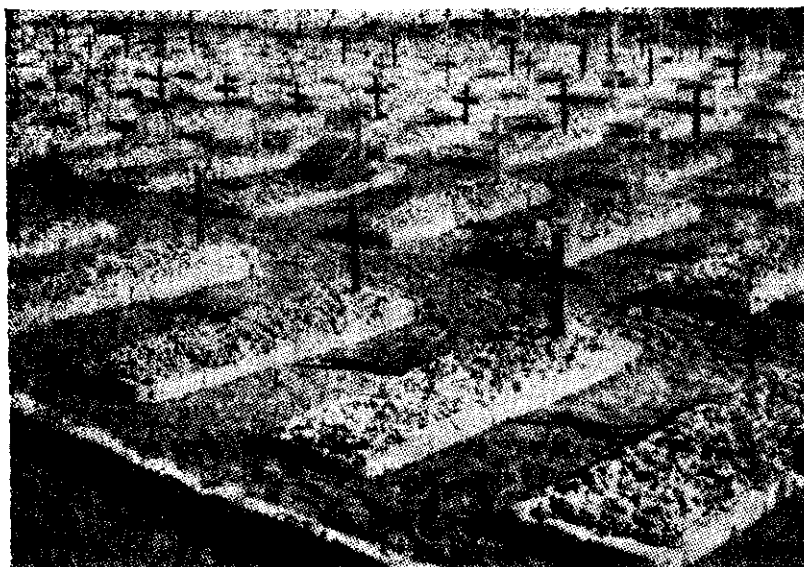


# WHERE THEY LIE

## Visit To Alamein Cemetery



In the Alamein cemetery: "All the graves with their white crosses, close together, rows on rows of them, make an impressive sight, and strange to say, rather inspiring than depressing"

*Sleep after toil; port after stormy seas;  
Ease after war; death after life, does greatly please.*

IT is not true, as many suppose, that a military cemetery is a place of unrelieved gloom. It may be a place of lofty beauty and calm. Here is an extract from a letter written to his wife by a member of the National Broadcasting Unit in the Middle East (J. W. Proudfoot).

"One of the most interesting days I've had in a long time was spent in making a trip out to see our Graves Registration Unit on the Alamein battlefield. We left Alexandria at nine on Sunday morning, and stopping only once on the way to eat a few ripe figs, covered the 70 miles to Alamein station in two hours. It certainly brings the fact home to one very forcibly that Jerry was within an ace of achieving his objective. We always knew he was close, but when you drive out of a big city, then in two hours find yourself in one of this war's wickedest battlefields, the fact seems to strike with greater realism.

"Near Alamein station, handy to the coast road, is what is believed to be already the biggest British war cemetery in the world. There are over 7000

(continued on next page)

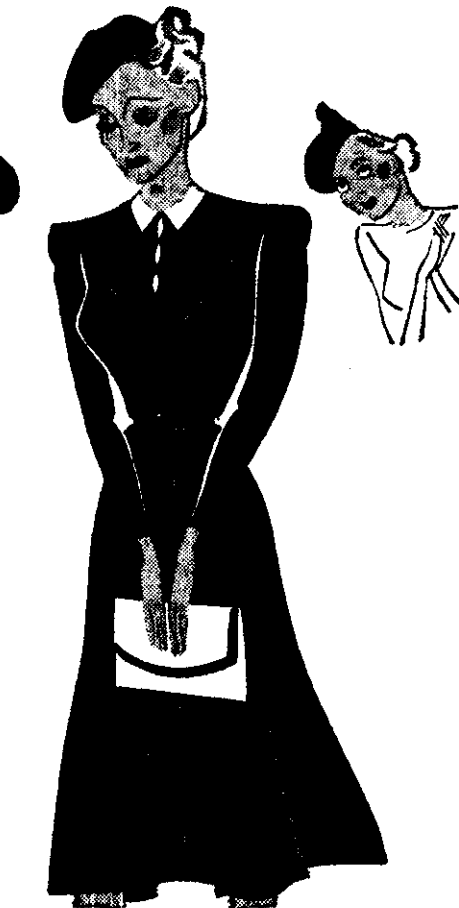


Miss X came to buy a Berlei. The shop had nothing in stock for her figure type, but the new girl behind the counter was anxious to please, and showed her the next nearest fitting, and Miss X, in desperation, bought it. She never felt happy in that Berlei. She blamed the store, and Berlei, but actually she knew herself that it was not her fitting.

★ ★ ★ ★ ★

This sad story is too often enacted nowadays. Its moral is, don't ever buy a Berlei that's the nearest to your own figure type fitting. Better to wait, or at a pinch, better to shop elsewhere. Your own store would much prefer you to do this, rather than sell you a Berlei that can never be completely satisfactory.

Please remember there are plenty of Berleis for everyone, and today, with the restrictions on the use of elastic, it's vitally important you get the Berlei that's exactly right for you.



Remember these points when being fitted:

- 1 Be sure you try sitting in the garment.
- 2 Be sure you ask for a little more room at the waist.
- 3 Be sure you bend and stretch in the garment to test it for freedom of movement.