

RADIO TOURS OF THE EXHIBITION

THE main task of Station 5ZB, the Exhibition Station, is to bring the Exhibition to listeners. A day by day tour has been arranged, and these descriptions are a great help, and guide not only to those, who for some reason, cannot attend the Exhibition, but also for visitors who naturally cannot spend every day there.

This detailed running commentary is doing an excellent job in picking out the important things to see, and is invaluable as a check on visitors' progress. The Exhibition is large—everyone is realising just how large, and how much there is to see. If you feel a bit lost and undecided where to begin—listen in to the Radio Tours on 5ZB, and make your sight-seeing plans accordingly.

Every day, "Jill" and "Mac" visit a new spot, in their progressive Exhibition itinerary.

At the Entrance

Their first tour began at the Tirangi entrance, first place of contact for visitors with the Exhibition. "Jill" and "Mac" described the bustle at the gates, the clanging trams arriving and departing, the click of the turnstiles, the voices of the programme sellers—

the rattle of the switchback railway just inside—all the noise of the Fair!

They stopped for a word with one of the attendants at the gates, and then were met inside by C. P. Hainsworth, General Manager of the Exhibition. And everywhere they went, that mike went too, so that listeners could follow every step of the way. They made a stop at the crèche, which "Jill" described in detail; and no doubt anxious mothers who thought a visit to the Exhibition was impossible because of the problem of what to do with baby, changed their minds at once. There ended the tour for the day: "Jill" and "Mac" said good-bye to Mr. Hainsworth and went on to 5ZB.

The Australian Pavilion

Next day they took their technician, with land lines, microphone and other essential paraphernalia to the Australian Pavilion, where they made a tour of the ground floor. Their interested comments brought a true picture to listeners' minds. And the Australian Pavilion really is something to enthuse over—the capacious hall, simply decorated, the striking murals, the cinema, and the exhibits depicting all aspects of Australian life.

The Cultural exhibit on the mezzanine floor had to be left till next day, when listeners went up with "Jill" and "Mac" and looked through the round wall of windows beside the spiral staircase. Then they visited the art gallery, the exhibits on Australian music and literature, the murals, and the architectural exhibits.

The United Kingdom Exhibit

Typical expression of British solidarity and dignity is the United Kingdom Pavilion, which "Jill" and "Mac" visited



G. H. MEADMORE, M.B.E., Commissioner-General of the United Kingdom Pavilion, welcomes "Jill" and "Mac" at the entrance of the pavilion on the occasion of a Radio Tour

on their next radio tour. They were met by G. H. Meadmore, M.B.E., Commissioner-General of the United Kingdom Pavilion, who welcomed them into the beautifully designed central court with its great central figure by Maurice Lambert. This figure is a symbol of power — illustrating man's ingenuity in using the forces of nature to make possible the various means of transport by air, road and waterways.

They described the semi-circular recesses on both sides of the Court with an exhibit of model ships on one side and aeroplanes on the other. "Jill" and "Mac" on their short visit managed to convey to listeners some part of this beautiful and elaborate Pavilion.

Port of London

Next day followed a tour of the Port of London Authority Building at the south-eastern corner of the Government Court Building. Features of the exhibit within the Pavilion are the portrayal of New Zealand's trade through the Port of London — a wonderful scale model of the most photographed bridge in the world, Tower Bridge — and a colourful diorama presenting three periods in the history of the Port of London. "Jill" and "Mac" must have found it hard to decide what to talk about first in this exhibit, which is teeming with interesting and fascinating details. Later, listeners to 5ZB heard "Jill" and "Mac" in a bright commentary on what they saw in the Canadian Pavilion. The Canadian Court is situated in the Motors and Transportation Block, and has been designed to give visitors some idea of the vast natural resources of Canada, and their development. Special displays show the four principal industries of this young but wonderfully progressive country — timber, mining, transportation, and agriculture.

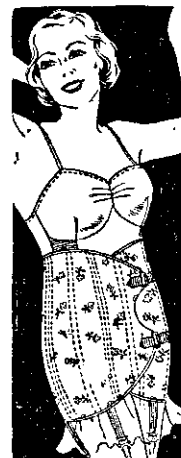


C. P. HAINSWORTH, General Manager of the Exhibition, greets "Jill" and "Mac" inside the Tirangi entrance on their first Radio Tour

So, from day to day, listeners will be given the opportunity of becoming familiar with what may be seen at the Exhibition, through "Jill" and "Mac" and their progressive Radio Tours.

ADJUSTA PATENT REDUCING CORSET

Recommended by "GRAN" at 12B



- An "ADJUSTA" will help you to slim in safety and comfort.
- The Patent Double Frontal control assures lifelong slimness and youthful fitness.
- It combines perfect support with perfect comfort, has no busks, lacing or rubber.
- It is scientifically cut to the figure and can be worn all the time at work or play.
- Instantly fastened and adjusted.

Sizes 24in. to 36in. waist, ... **30/-**
Over 36in. and up to 40in. waist, **35/-**

Postage 8d Extra.

Brassieres also available at reasonable prices. Send Waist and Hip Measurements and buy direct from the factory to wearer. Satisfaction guaranteed or money refunded.

NOTE.—We now make an "Adjusta" Belt for men, to control that bulge and give support.

Price, **10/6**

Call or write to—

ADJUSTA CORSETS

SHORT'S BUILDINGS, QUEEN ST., AUCKLAND.
Phone 41-350. P.O. Box 1717