

4YZ INVERCARGILL 680 k.c. 441 m.

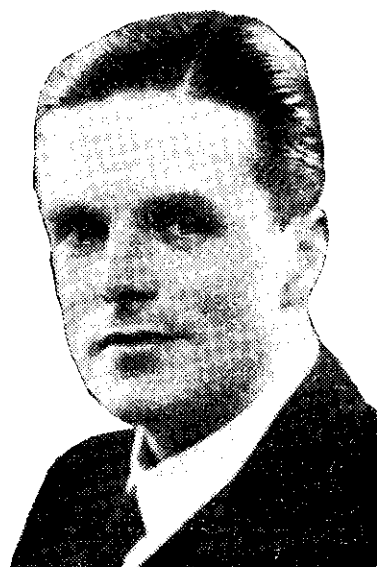
- 7. 0 a.m. Breakfast session
- 9. 0-10.0 Morning programme
- 11. 0 Recordings
- 12. 0-2.0 p.m. Luncheon session
- 5. 0 Tea dance
- 5.30 Children's session: Toyshop Tales
- 5.45 Band interlude
- 6. 0 "Eb and Zeb"
- 6.15 Reserved
- 6.45 "The Moonstone"
- 7. 0 Rebroadcast of Official News Service
- 7.10 After dinner music (7.30, station announcements)
- 8. 0 Sports talk: "Swimming" by J. C. Kirkland
- 8.15 "The Spring" Violin Sonata, Op. 24 (Beethoven); Herbert Janssen (baritone)
- 8.45 Mr. Chalmers, K.C.: "The Inquest Case"
- 9. 0 Reserved
- 9.20 Supper dance
- 10. 0 Close down

3ZR GREYMOUTH 940 k.c. 319 m.

- 7. 0 a.m. Breakfast session
- 9. 0 Morning programme
- 10. 0-10.10 Weather report
- 12. 0-2.0 p.m. Luncheon music
- 1. 0 Weather report
- 3. 0 Josephine Clara conducts the women's session: "Chance Meetings"
- 3.30 Afternoon programme
- 4.30 Weather and shipping news
- 5. 0 Children's session: The Legends of Umbogu
- 6. 0 Dinner music
- 6.15 Reserved
- 6.30 After dinner music
- 7. 0 News service issued by the Prime Minister's Department
- 7.20 Don Miguel and his Cuban music
- 7.30 "Marie Antoinette"
- 7.54 Massed bands of the Aldershot and Eastern Commands
- 7.57 Dad and Dave
- 8. 9 Classical programme, featuring: Arthur Rubinstein (piano), and the London Symphony Orchestra, in "Concerto No. 4 in B Flat Minor, Op. 23" (Tchaikovsky)
- 8.40 "The Fourth Form at St. Percy's"
- 8.52 Royal Naval Singers, conducted by C. F. Lee, B.Sc., R.N., in "Songs of the Sea"
- 9. 0 Reserved
- 9.10 Hot Spot, featuring Jimmy Luncford and his orchestra
- 9.25 "Personal Column"
- 9.38 Fred Hartley's Quintet and the Four Voices
- 10. 0 Close down

2YH NAPIER 760 k.c. 395 m.

- 7. 0-10.0 a.m. Breakfast session
- 11. 0 Light music
- 12. 0-2.0 p.m. Lunch session
- 5. 0 Light musical programme
- 5.30 "Eb and Zeb"
- 5.45 Uncle Ed and Aunt Gwen
- 6.45 Weather report and forecast for Hawke's Bay
- 7. 0 Rebroadcast of Government News Session
- 7.15 (approx.) After dinner music
- 8. 0 Light popular programme
- 8.25 "His Last Plunge"
- 8. 0 Reserved
- 9.20 Light classical music
- 10. 0 Close down



HOUSEWIVES and others fortunate enough to be handy to a radio at 2 p.m. on Monday, October 16, will have the opportunity of hearing Lord Lurgan (baritone) give a brief recital from 1YA. It is as William Brownlow that Lord Lurgan (above) is best known to listeners

2YN NELSON 920 k.c. 327 m.

- 7. 0 p.m. Rebroadcast News from Prime Minister's Department
- 7.20 (approx.) Light music
- 8. 0 Programme of classical music, introducing: "Symphony No. 96 in D Major" (Haydn), Vienna Philharmonic Orchestra; and "Les Preludes — Symphonie Poem" (Liszt), Philadelphia Orchestra
- 9. 0 "The Circle of Shiva" (episode 7)
- 9.15 Humorous interlude
- 9.30 Light music
- 10. 0 Close down

2YD WELLINGTON 990 k.c. 303 m.

- 7. 0 p.m. Rhapsodies in rhythm
- 7.35 Personal Column
- 7.45 "Sing As We Go"
- 8.15 "The Woman in White" (episode 5)
- 8.28 Aerotones
- 9. 3 "His Last Plunge" (episode 6)
- 9.15 Black and white studies
- 9.30 Crazy couplets
- 10. 0 Close down

IZM AUCKLAND 1250 k.c. 240 m.

- 5. 0 p.m. Light orchestral and popular items
- 6.45 Announcements
- 7. 0 Orchestral recordings
- 7.20 Horticultural Society's Home Garden Talk
- 7.45 "Lorna Doone"
- 8. 0 Music lovers' session: "Mignon" (Thomas)
- 8.30 Concert
- 9.30 Latest hits
- 10. 0 Close down

TELLING THE TROOPS

How Dress Distinguishes The Various Units

TIME was when khaki in the streets only represented a soldier. Now it represents the nation's biggest industry, and it's right on top of column one.

It is a highly organised industry, with half a dozen people behind each front line man; feeding him, arming him, supporting him, directing him, clothing him. There are wheels within wheels, units within units.

How is it possible to tell them apart? The Listener put this question to an officer in the Army Department this week, and with his patient assistance secured a summary of the dress regulations to help plain people know what they're looking at when they see a uniform.

MOUNTED UNITS wear: A jacket, medal ribbons, pantaloons, puttees, felt hat with puggaree, black boots, spurs, bandolier.

MOUNTED RIFLES wear: A felt hat creased down the middle from front to back. (The felt hat of all other units is peaked at the crown with four dents. All hats in New Zealand have horizontal brims.)

DISMOUNTED UNITS wear: Jacket, medal ribbons, trousers, puttees, felt hat and puggaree, black boots.

VEHICLE DRIVERS attached to dismounted units wear: Fore and aft khaki cap, like a Glengarry, khaki overalls.

MOTOR-CYCLISTS attached to infantry regiments may be recognised by their black berets, black knee boots and black leather gauntlets.

MOTOR-CYCLISTS attached to other units wear a khaki beret.

The quickest way to pick out a man's unit is with a glance at his puggaree, or hat band. The colours are:—

Permanent Staff: Scarlet.

Mounted Rifles: Khaki-green-khaki.

Artillery: Blue-red-blue.

Engineers: Khaki-dark blue-khaki.

Corps of Signallers: Khaki-white-light blue-khaki.

Infantry: Khaki-red-khaki.

Army Service Corps: Khaki-white-khaki.

Medical Corps: Khaki-dull cherry-khaki.

Ordnance: Red-blue-red.

Chaplain: Black-khaki-black.

The abbreviations used for the shoulder titles (brass letters on shoulder straps of jackets and great coats) are:—

N.Z.M.R.: Mounted Rifles.

N.Z.A.: Artillery.

N.Z.E.: Engineers.

N.Z.C.S.: Corps of Signallers.

N.Z.R.: Infantry Regiments.

N.Z.A.S.C.: Army Service Corps.

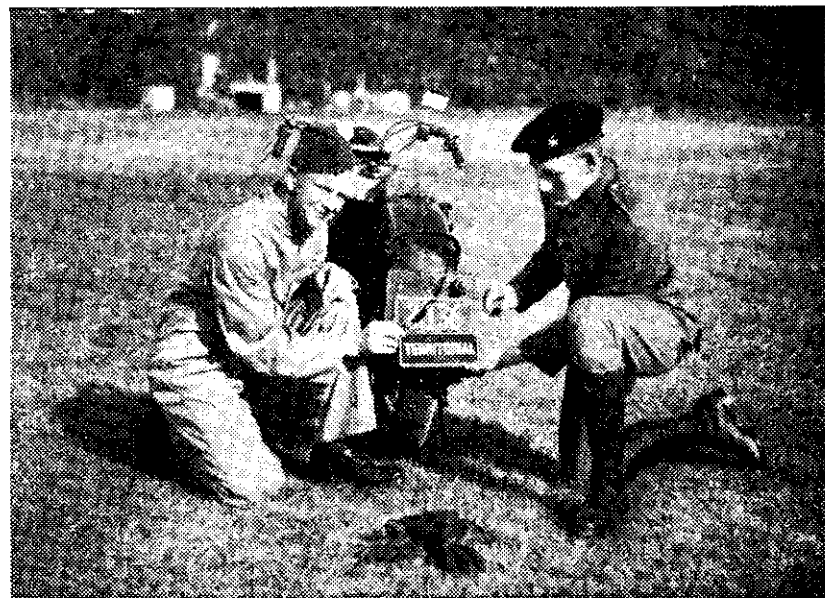
N.Z.M.C.: Medical Corps.

Puggarees and shoulder titles are the easiest means of identification of the three main units first mentioned and their components, but the expert also has an eye for the scores of different corps and regimental badges worn on hats and collar bands.

Artillery, for instance, have a representation of a gun on the hat badge and grenades on the collar badge; but in the case of infantry regiments each unit has its own special regimental design. Thus, the badge of the First Battalion of the Wellington Regiment is designed from the crest of the Duke of Wellington.

There are hundreds of different badges, as collectors in the last war discovered.

Chaplains may be distinguished by the black metal buttons and badges of rank. Their uniform is otherwise identical with that of the unit to which they are attached except that the puggaree is black-khaki-black, and they may wear either khaki collar and tie or white collar with the black clergyman's stock, as they prefer.



A driver attached to a dismounted unit is interested in the "Territorial" plate to be affixed to the machine used by the motor-cyclist attached to an infantry regiment