

4YZ INVERCARGILL 680 k.c. 441 m.

- 7. 0-9.0 a.m. Breakfast session
- 12. 0-2.0 p.m. Luncheon session
- 5. 0 Tea dance
- 5.30 Children's session, "Toyshop Tales"
- 5.45 Light music
- 6.15 "Eb and Zeb"
- 6.30 Dominion Day
- 6.45 "The Moonstone"
- 7. 0 After dinner music (7.30, Station announcements)
- 8. 0 Sports talk: "Tennis," by P. F. de la Perrelle
- 8.15 Trio in D Major, Op. 70, No. 1 (Beethoven) and Lotte Leonard (soprano)
- 8.45 Mr. Chalmers, K.C.: "The Case of Norman Osborne"
- 9. 0 Band programme, with studio recital by F. H. Johnson (tenor)
- 9.30 Rhythm time
- 10. 0 Close down

3ZR GREYMOUTH 940 k.c. 319 m.

- 7. 0 a.m. Breakfast session
- 9. 0 Morning programme
- 10. 0-10.10 Weather report
- 12. 0-2.0 p.m. Luncheon music
- 1. 0 Weather report
- 8. 0 Josephine Clare conducts the women's session: "Our Feathered Friends"
- 3.30 Afternoon programme
- 4.30 Weather and shipping news
- 5. 0 The Legends of Umboga: "The Story of the Hippopotamus"
- 6. 0 Dinner music
- 6.30 News and reports
- 7. 0 The Goldwyn Follies
- 7. 7 "Marie Antoinette"
- 7.32 Recital by Len Fills (guitar), and Gracie Fields
- 7.48 "Dad and Dave"
- 8. 0 Classical programme: Vienna Philharmonic Orchestra, "Jupiter Symphony" (Mozart)
- 8.30 Search for a Playwright (episode 1)
- 8.43 London Palladium Orchestra: "The Leek" Selection
- 8.51 Manchester Children's Choir, with the Halle Orchestra, conducted by Sir Hamilton Harty, in "Hansel and Gretel" (dance duet), and "Nymphs and Shepherds"
- 9. 0 Hot spot, featuring "Down Harlem Way"
- 9.15 "Personal Column"
- 9.30 Marek Weber's Orchestra and Malcolm McEachern (bass)
- 10. 0 Close down

2YH NAPIER 760 k.c. 395 m.

- 7. 0-9.0 a.m. Breakfast session
- 11. 0 Light music
- 12. 0-2.0 p.m. Lunch session
- 5. 0 Light musical programme
- 5.30 "Eb and Zeb"
- 5.45 Uncle Ed and Aunt Gwen
- 6.45 Weather report and forecast for Hawke's Bay
- 7. 0 After dinner music
- 8. 0 Light popular programme
- 8.25 "His Last Plunge"
- 9. 0 Light classical programme
- 10. 0 Close down



NO VOICE heard over the air is harder worked than that of Gracie Fields. She will be heard again from 3ZR on Monday evening, September 25

2YN NELSON 920 k.c. 327 m.

- 7. 0 p.m. Light music
- 7.30 "First Aid": Talk contributed under the auspices of the St. John Ambulance Association
- 8. 0 Concert programme: Classical music featuring "Concerto No. 1 in D Minor Op. 15" (Brahms), played by Arthur Schnabel (piano) and London Philharmonic Orchestra
- 8. 0 "The Circle of Shiva" (episode 4)
- 9.15 Humorous interludes
- 9.30 Light music
- 10. 0 Close down

2YD WELLINGTON 990 k.c. 303 m.

- 7. 0 p.m. Rhapsodies in rhythm
- 7.35 Personal Column
- 7.45 "Sing as We Go"
- 8.15 "The Woman in White"
- 8.25 Aerotones
- 9. 3 "His Last Plunge" (episode 3)
- 9.15 Black and white studies: A session of keyboard rhythm
- 9.30 "Revue in Rhyme"
- 10. 0 Close down

12M AUCKLAND 1250 k.c. 240 m.

- 5. 0 p.m. Light orchestral and popular selections
- 6.45 Announcements
- 7. 0 Orchestral numbers
- 7.20 Horticultural Society's home garden talk
- 7.45 "Lorna Doone"
- 8. 0 Music lovers' session: "A London Symphony" (Vaughan Williams)
- 8.30 Concert session
- 9.30 Latest hits
- 10. 0 Close down

Get ALL the Overseas News First-hand On An— ENSIGN

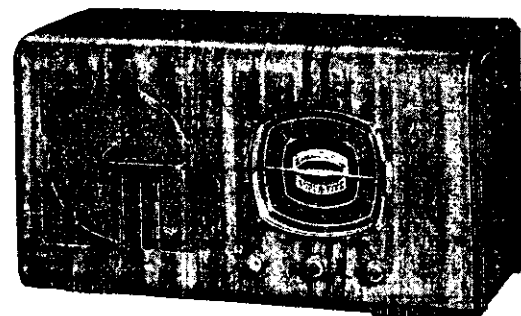
"Ensign" does more than bring you STUDIO REALISM! "Ensign" is more than THE BEST RADIO VALUE in New Zealand! "Ensign" is more than the PERFECTLY ENGINEERED RADIO! "Ensign" also ensures you COMPLETE SATISFACTION with this exclusive

"ENSIGN" GUARANTEE

FIRST . . . WE GUARANTEE your "Ensign" will bring in clear, and of good volume, all the OVERSEAS STATIONS indicated on the dial, when weather conditions are favourable, and provided a good aerial system is used.

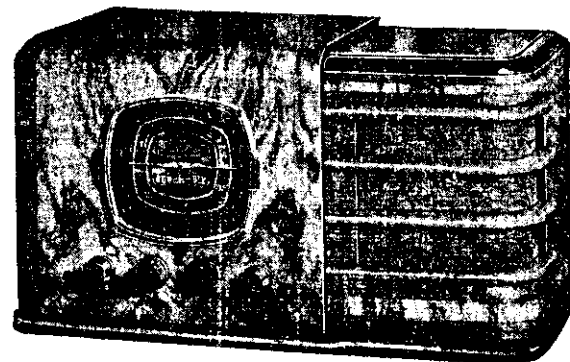
SECOND . . . Every "Ensign" Radio is GUARANTEED against manufacturing defects for ONE YEAR. If any part (with the exception of the valves which are guaranteed by the makers) should fail during that period it will be replaced free.

5 Valve
A.C. Broadcast
Model
£17-10-0



A splendid 1939 receiver offering fine performance. Features include full-vision dial with station letters imprinted—latest superbet circuit—full acting automatic volume control—8in. Operadio electro-dynamic speaker. Beautifully polished veneers are used to finish this handsome cabinet. Size—Height, 11 in.; width, 21 in.; depth, 8 in. Cat. No. ZR907.

6 Valve
Dual Wave
Model
£24



An attractive instrument with exceptionally clear full-vision dial illuminated in two colours. Modern smooth tuning—automatic volume control. 8in. Operadio electro-dynamic speaker. Superb foreign reception and outstanding tone distinguish this receiver. Cabinet is of modern design and is finished with the best walnut veneers. Size—Height, 11 in.; width, 19 in.; depth, 8½ in. Cat. No. ZR908.

Write for Free Illustrated Booklet of
15 NEW AND MARVELLOUS ENSIGN RADIOS
Obtainable only at

THE ELECTRIC
LAMPHOUSE
LIMITED
11 MANNERS STREET :: WELLINGTON