

September 19

4YZ INVERCARGILL 680 k.c. 441 m.

- 7. 0-9.0 a.m. Breakfast session
- 11. 0 Recording
- 12. 0-2.0 p.m. Luncheon session
- 5. 0 Light music
- 5.30 Children's session: David and Dawn
- 5.45 Dance music
- 6.15 Forenoon of the Salween: "Death of the High Priest"
- 6.30 Patricia Rossborough (piano)
- 6.45 "Homestead on the Rise"
- 7. 0 After dinner music
- 7.30 Station announcements
- 8. 0 Talk for the man on the land: "Maintaining Soil Fertility and Manuring Farm Crops," by S. D. Blomfield
- 8.15 Selections from grand opera, introducing Act III. of "Carmen" (Bizet)
- 9. 0 Ports of call: Switzerland
- 9.30 Soft lights and sweet music
- 10. 0 Close down

3ZR GREYMOUTH 940 k.c. 319 m.

- 7. 0 a.m. Breakfast session
- 9. 0 Morning report
- 10. 0-10.10 Weather report
- 12. 0-2.0 p.m. Luncheon music
- 1. 0 Weather report
- 3. 0 Afternoon programme
- 4.30 Weather and shipping news
- 5. 0 Children's session
- 5.46 "Westward Ho!" (episode 16)
- 6. 0 Dinner music
- 6.30 News and reports
- 7. 0 Gershwin Medley No. 1
- 7. 7 "Marie Antoinette"
- 7.32 Radio Rhythm Revue, featuring Eddie Polo in "Twisted Tunes," & Rex Cavalcade of 1938
- 8. 0 Grand opera
- 8.30 Fourth Form at St. Percy's
- 8.43 Les Allen & His Canadian Bachelors
- 8.46 Reginald Dixon Organ Medleys
- 9. 0 Lighter Moments with the Masters
- 9.30 To-night We Dance: Casa Loma Orchestra, Lew Stone & His Orchestra, with interludes by the Merry Maes
- 10. 0 Close down

2YH NAPIER 760 k.c. 395 m.

- 7. 0-9 a.m. Breakfast session
- 11. 0 Light music
- 12. 0-2.0 p.m. Lunch session

- 5. 0 Light musical programme: "Bands and Ballads"
- 5.30 For the Children, at 5.45, "David and Dawn"
- 6. 0 "The Buccaneers"
- 6.15 Light music
- 6.45 Weather report and forecast for Hawke's Bay. "David Copperfield"
- 7. 0 After dinner music
- 8. 0 "Coronets of England": The Story of Mary, Queen of Scots
- 8.30 Miscellaneous music
- 9. 0 "Tit-bits of To-day: Hits of Yesterday"
- 9.30 "The Crimson Trail"
- 10. 0 Close down

2YN NELSON 920 k.c. 327 m.

- 7. 0 p.m. Light music
- 7.45 "Dombey and Son" (chapter 12)
- 8. 0 Concert programme: Light opera & musical comedy
- 8.30 Orchestral music, with vocal interludes, featuring "Kreisleriana," played by Minneapolis Symphony Orchestra
- 9.15 "Lorna Doone" (episode 17)
- 9.30 Dance music
- 10. 0 Close down

2YD WELLINGTON 990 k.c. 303 m.

- 7. 0 p.m. Ragtime marches on
- 7.35 The Crimson Trail
- 7.46 Musical melange
- 8.25 Buccaneers of the Pirate Ship
- Vulture: Rhythm in nautical setting
- 8.40 2YD trailer
- 8.45 The Fourth Form at St. Percy's
- 9. 0 Dancing times
- 9.20 Ports of call: "Switzerland"
- 9.50 Fanfare: Brass and Military bands on parade
- 10. 0 Close down

IZM AUCKLAND 1250 k.c. 240 m.

- 5. 0 p.m. Light orchestral and popular selections
- 6.45 News, announcements
- 7. 0 Orchestral items
- 7.45 Notable British trials: "The Trial of Franz Muller" (10th and final episode)
- 8. 0 Concert programme
- 9. 0 Youth and beauty: Lou Taylor
- 9.30 Miscellaneous numbers
- 10. 0 Close down



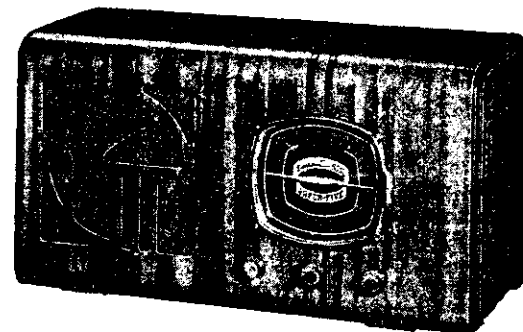
BEHIND THE BASTIONS of her mountains, Switzerland stands to arms. The little mountain republic is the week's "port of call" at 4YZ and 2YD on Tuesday, September 19. The peak on the right of the photograph is the Jungfrau

ENSIGN HIGH FIDELITY RADIOS THE RADIO THAT BRINGS YOU Studio Realism

Listen to "ENSIGN" RADIO for two minutes, and MARVEL! You won't believe it's radio, because, for the first time, you will be listening to REAL REPRODUCTION—just as if the actual performance was taking place in your very home.

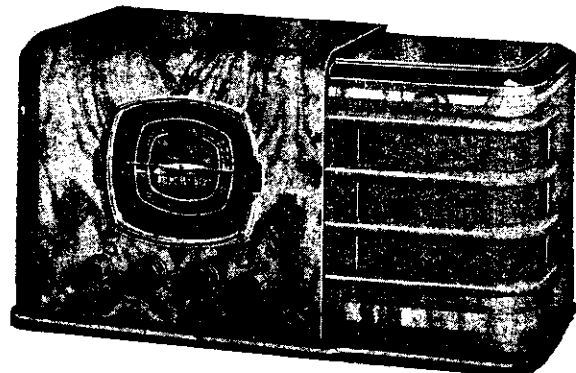
Here, at last, is the perfectly engineered radio. It's smoothness, freedom from interference, and its STUDIO RECEPTION, make the "ENSIGN" a joy to own—a machine to exhibit and demonstrate with pride.

**ENSIGN 5V
A.C. Broadcast
Mantel Model
£17-10-0**



A splendid 1939 receiver offering fine performance. Features include full-vision dial with station call letters imprinted—latest superhet circuit—full acting automatic volume control—8in. Operadio electro-dynamic speaker. Beautifully polished veneers are used to finish this handsome cabinet. Size—Height, 11in.; width, 21in.; depth, 8in. Cat. No. ZR907.

**ENSIGN 6V
Dual Wave
£24**



An attractive model with exceptionally clear full-vision dial illuminated in two colours. Modern smooth tuning automatic volume control. 8in. Operadio electro-dynamic speaker. Superb foreign reception and outstanding tone distinguish this receiver. Cabinet is of modern design and is finished with the best walnut veneers. Size—Height, 11in.; width, 19in.; depth, 8½in. Cat. No. ZR908.

Write for Free Illustrated Booklet of
15 NEW AND MARVELLOUS ENSIGN RADIOS
THE ELECTRIC
LAMPHOUSE
LIMITED
11 MANNERS STREET :: WELLINGTON