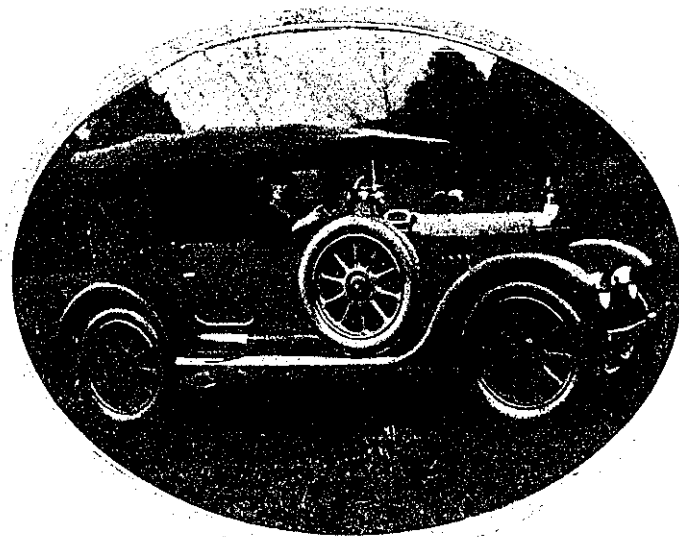


The City of Good Roads



Photograph: J. Holland, Junr.

Mrs. W. A. HORNE, of Epsom, in her new Standard car.

CHRISTCHURCH AS A MOTORING CENTRE

A CHARMING RUN ROUND THE CITY

CHRISTCHURCH as a motoring centre is truly an ideal jumping-off city for the motorist—good metal roads leading north, south, east and west from all points of the compass; hills two and a half miles from the centre of the city; a flat run of 100 miles to Washdyke without a single hill other than the river terraces of Rakaia and Rangitata. Thirteen miles from Christchurch, via Dyer's Pass and Governor's Bay, at Teddington, starts Banks Peninsula, comprising a series of hills and bays, the roads in some places rising to an altitude of 2,000 feet in 3½ miles. A road about 18 miles long runs along the top of the Peninsula from the Hill Top on the north-west side to the Long Bay Saddle on the south-east, giving one of the most unique and glorious views it is possible to imagine.

There are no less than seven watering places on the 40-Mile Beach from Sumner at the south end to Amberley at the north. Sumner and New Brighton are the chief seaside resorts of the city, the others are all provided with shelters and the necessary equipment for hot water, etc. One of the most popular motorists' picnicking grounds is the Ashley Gorge, 40 miles out north-west from the city, reached by alternate routes.

For the first trip we will take a radius of about 5 miles round the city. Starting from the Cathedral—the chief and most prominent landmark—we will wend our way straight down Colombo Street, through the well populated suburb of Sydenham, to the foot of Dyer's Pass Road, Cashmere Hills, about 2½ miles; we will here turn to the left, passing the Coronation Hospital, Sanatorium, Soldiers' Sanatorium and Children's Open Air Home, all on the hillside. Following round the hills we come to St. Martin's (famous for its early flowers and fruit), over Murray-Aynsley's Hill—which is the end of one of the leading spurs of the Port Hills. Still following the hills we pass through Hillsboro'—over to the left is the Woolston Tannery, the scene of so many recent mysterious conflagrations. Continuing on at the foot of the hills we pass through the Heathcote Valley, in which are the homes of many orchardists, early fruit and vegetable growers—passing on the right quite close

to the mouth of the much discussed "hole in the hill," known as the Lyttelton Tunnel, and the famous Bridle Track, over which so many of our early settlers wended their way to the site which is now the City of Christchurch. Needless to say, the present-day settler prefers, when he can get it, a trip to the Port in a "Liz" or "Rolls"—it just depends upon how much his pocket can afford. Continuing on to the Ferry Bridge we pass what is known as the Ferry Mead, where in the old days the settlers had to cross the Heathcote River in a punt or something similar. Crossing the bridge and heading for the city we turn sharply to the right along Dyer's Road, cross the Canal Reserve, which was set aside for the purpose of direct communication with the sea to allow shipping to wend its way up to the city—a dream which in our time is not likely to be realised, whatever may happen in the future. Continuing on via Palmer's Road, we pass through the City Sewage Farm, which at one time was a spot to be avoided. Now that we have more up-to-date methods of dealing with the city refuse this is no longer an unpleasant spot. Continuing on via Bexley Street we come to the New Brighton tramline; a sharp turn to the right, and over the bridge which spans the Avon—a structure much out of date, shortly to be replaced by something more in keeping with the times—we follow the tramline to the fast growing seaside resort, New Brighton, a very popular surfing beach in the summer time. On fine Sundays and holidays many hundreds of bathers of all ages and sexes are seen either in the water or enjoying a sand and sun-bath. It is becoming quite an animated scene when the days are particularly suitable. There are, of course, the usual seaside tea and refreshment rooms, also an hotel where something stronger can be obtained if desired. Proceeding north and following the tramline, which runs parallel with the beach, we come to what is known as North New Brighton, which is rapidly growing into an important seaside resort, and will one day, no doubt, be linked up with the older settlement, and eventually both will be included in the "Greater Christchurch" scheme. Proceeding west and following the tramline,

we pass the New Brighton Trotting Grounds on the right, we follow the tramline till it turns to the left, but do not turn, keeping straight on. Leaving tramline, you come to Bottle Lake Road, turn to right and pass Bottle Lake Hospital on right, keep on till you come to Preston's Road on left, turn to left, keeping straight on till you come to cross road (Marshland's Road), turn sharp to the right, then on till you cross bridge over Styx River, take first road (Belfast Road) to left after crossing bridge, continue on till you come to Main North Road, passing Borthwick's Works on the left and Canterbury Frozen Meat Company's on right, turn to left on Main North Road, then first turn to right (John's Road), continue on, cross Harewood Road and Russley Road, neither turning to right or left. Follow signs indicating to Yaldhurst and Main South Road, when you come to cross road (Main Road West) indicating to Yaldhurst turn to left, then first turn to right—sign indicating to Hornby—passing Riccarton Racecourse on left. Following on you will cross Main South Line at Hornby; keep straight on till you come to sign indicating to Halswell, where you will cross the railway line; follow the sign indicating to Halswell. After leaving railway line, when you come to first cross road, turn to left and then to right, following sign to Halswell. You will then come to the Main Little River-Akaroa Road; take road leaving store on right, heading straight to hills, then take road on left and follow sign indicating Christchurch, via Hoon Hay and Cashmere (road undulating for about two miles). Follow the road round the hills, cross bridge at Cashmere, thence to Barrington Street, cross bridge immediately in front of Convalescent Home, which is on the hillside to right, thence follow straight on till you come to cross road about 1½ miles straight run, turn to right, passing Show Grounds on left, continue straight on to the city, crossing Main South Line at Addington, passing Hagley Park on left and West Christchurch School on right, then passing Christchurch Hospital on left, and running parallel with River Avon into city—you will then have circled Christchurch.