

## THE USE OF FOUR-WHEEL BRAKES

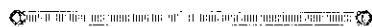
**I**F your car has front-wheel brakes, do not take any more risks than you would had you rear-wheel brakes only. Front-wheel brakes are one of the greatest factors of safety it is possible to have, although at the same time, instead of trying to pull up in ordinary conditions twice as fast as you would be able to with rear-wheel brakes only, slow down quite gradually, so that the fact that you have brakes on all four wheels means that you are using each set of linings only half as much as when you are using those on the rear wheels only. Rather should you look on four-wheel braking as a means of lengthening the life of brakes and brake linings, with, of course, the knowledge that should an emergency arise you can pull up with amazing rapidity, but never forget that the driver following you may not be able to pull up so quickly. Front-wheel brakes are no excuse for taking risks; reliable as are most modern types, they might fail one day, so drive sensibly.

## SEVEN DEADLY SINS

1. Cutting corners.
  2. Beating trains to crossings.
  3. Failing to slow down at intersections.
  4. Turning without looking to the rear.
  5. Crowding in ahead of an overtaken vehicle.
  6. Passing a car recklessly.
  7. Failing to slow down for pedestrians.
- All of these offences are bad, particularly the last.

## ON BAD ROADS

Confidence in the good quality of present-day tyres is the reason why many drivers knock them about unmercifully. Incidentally, there are times when, by saving your tyres, you also save your car. For instance, to continually increase the pace on coming to a rough piece of road, in order to carry the car over without loss of speed, is severe on both tyres and car. It is a good practice to accelerate, when possible, before coming to a bad patch, and when a few inches off disengage the clutch and allow the car to coast over.



## AN ANNOUNCEMENT

The well-known firm of Messrs. G. L. Winger & Sons, agents for the popular "Velie" car, late of 40 Mount Eden Road, have now taken permanent premises at the corner of Grey Street and Queen Street, Auckland.

## An Important Announcement to Motorists

The September issue will contain the first number of

## The LADIES' MIRROR MOTORING SUPPLEMENT

This will be a separate supplement, and though additional to the ordinary number, no extra charge will be made.

It will contain articles of interest to every car owner and would-be car owner in New Zealand, to whose service it will be devoted.

Amongst the matters dealt with will be :

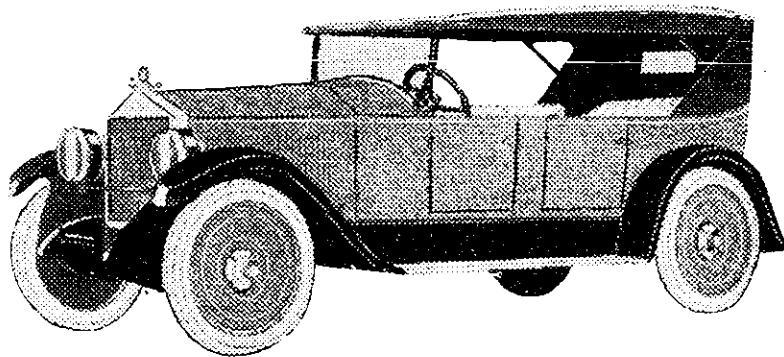
ROADS TOURS  
UNPREJUDICED REPORTS ON NEW MODELS  
CURRENT MOTORING AFFAIRS  
MOTORING FASHIONS HINTS AND TIPS  
Etc., etc.

See that You Secure Your Copy

Become a Subscriber.  
Fill up a Form  
TO-DAY.

"Mirror" Advertised Cars Will Be "Her" Choice.

Please pass this  
copy on to your  
friends.



## The Supreme Effort!

## 1925 MOON

—costs less than £500

THE GREATEST MOON EVER MADE!

Hydraulic Brakes—the greatest improvement in automobile construction since the innovation of the shaft drive—are fitted as standard on the New Moon.

Balloon Tyres are also part of this great car's standard equipment.

There's no finer car in the world to-day than the beautiful 1925 Model Moon at the new Low Price of £495.

See the Moon Agent in your town!

## Moon Motors Limited

Sole N.Z. Distributors

406-408 Queen Street, Auckland

(Just above the Town Hall, on the opposite side)

HAINES



## BRITISH MADE CORSETS

**T**WILFIT Corsets are British made throughout and are a triumph of expert designing, workmanship and material.

A great feature is the freedom they afford under all circumstances.

Every Twilfit Corset is guaranteed to be

**RUSTLESS & UNBREAKABLE**

**POPULAR PRICES**

Obtainable in the following towns only from :

Auckland.....	Geo. Court & Sons Ltd.	Fellding.....	John Cobbe & Co.
Christchurch.....	W. Strange & Co. Ltd.	Oamaru.....	Otago Farmers'
Dunedin.....	A. & T. Inglis	New Plymouth.....	Whites Ltd.
Palmerston North.....	Collinson & Cunningham	Thames, Te Aroha, & Waihi.....	Hetheringtons Ltd.
Invercargill & Gore.....	H. & J. Smith Ltd.	Gisborne.....	W. Pettie & Co. Ltd.

Trade Only Twilfit Corsets, Box 829, Auckland

