

BEAUTIFUL HOMES of NEW ZEALAND

"MOOSE LODGE,"

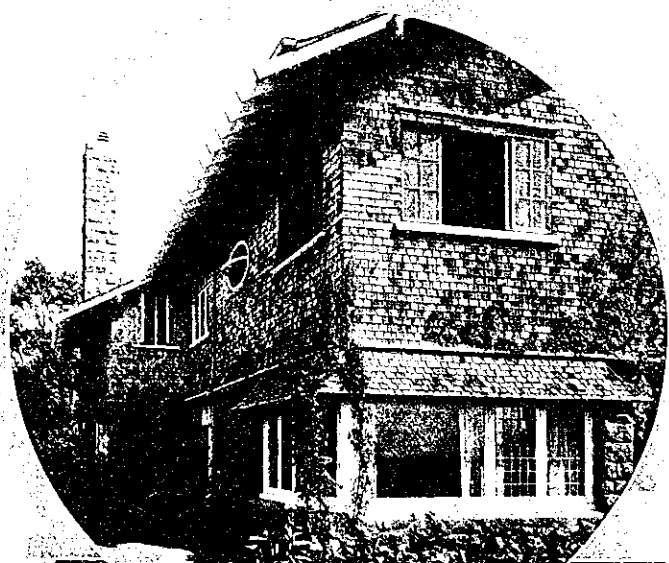
GILGIT AVENUE, EPSOM, AUCKLAND
The RESIDENCE of DR. & MRS. F. J. RAYNER

*The
HOUSE FROM
THE GARDEN,
showing the
wide windows
that yield de-
lightful vistas.*

"Moose Lodge," Epsom, must rank as one of the finest residences in Auckland. It possesses the unfortunately too rare advantage of having been designed as a whole, and the furniture and decoration are in keeping with the architect's ideals. A beautiful, satisfying effect has been secured by the graceful proportion of every detail, and no extraneous ornament has been allowed to mar the scheme.

A striking feature of the house is the beautiful hall and stairway, illustrated below.

The beauty of the garden is enhanced by the views which it commands over Auckland and the lovely Waitemata.



*THE SUN-ROOM
overlooks the Garden, and is an
alluring retreat in summer days.*



*Relics of travel and the
chase in many lands
adorn the Hall, around
which the staircase forms
a gallery.*



*Here we realise the value
of correct proportion and
lack of irritating detail.
What could make a fitter,
more dignified entry to a
House than this spacious
hall and stately, though
graceful, stairway?*