

beyond the main 4wd route but numerous long- or short-walk options are available for experienced overlanders.

No doubt one or two 4wd tourism concessions will develop from the creation of the park. Hunters seeking pigs or red deer are also likely to be attracted, and they will need permits to shoot in the area.

The Government's process for reviewing pastoral leasehold tenure spawned this park. It produced contiguous blocks of land of sufficient size to justify the creation of a conservation park. Te Papanui is made up of six parcels of land, the largest pieces coming from the Rocklands Station and Halwyn Station tenure reviews.

The Dunedin City Council has a major stake in the new park. The city's contribution of \$695,000 towards the Rocklands tenure deal ensured immediate destocking of the bulk of the Deep Stream/Deep Creek catchment, which supplies about 60 percent of the city's water.

Water, habitat for native flora and fauna, and recreational opportunities — all these flow from the creation of Te Papanui Conservation Park.

Add to those values a captivating landscape. DoC's conservator for Otago, Jeff Connell, reached for some evocative words to describe Te Papanui when he spoke at the official opening of the park in May.

'On foggy days, it is utterly silent . . . the landscape is hidden, waiting. As the fog clears, the landscape stretches and unfolds. A subtle landscape, this, where fine textured grasslands, mossfields and snowbanks reveal every hummock and hollow, and edges are rolled in the low southern sun.'

The new park has its detractors, mostly from among the farming community. They worry that Te Papanui is the thin end of a wedge — the first of six proposed conservation parks in the Otago high country — that will swallow up vast areas of summer grazing country in the inland mountain ranges of Otago. They worry about what they call a wholesale 'locking up' of land.

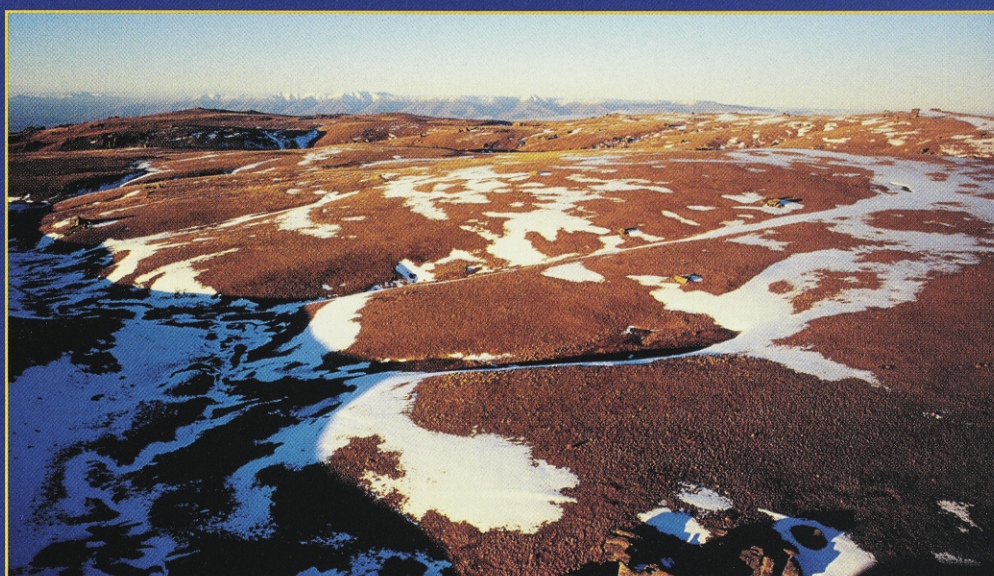
The conservation counter-argument portrays the park-creating process as the reverse of a lock-up. It argues that these new parks will facilitate public access and recreation as never before, and that, in Te Papanui's case, a major city's water supply will enjoy greater protection and security.

Above all, Te Papanui offers a liberating space for body and soul.

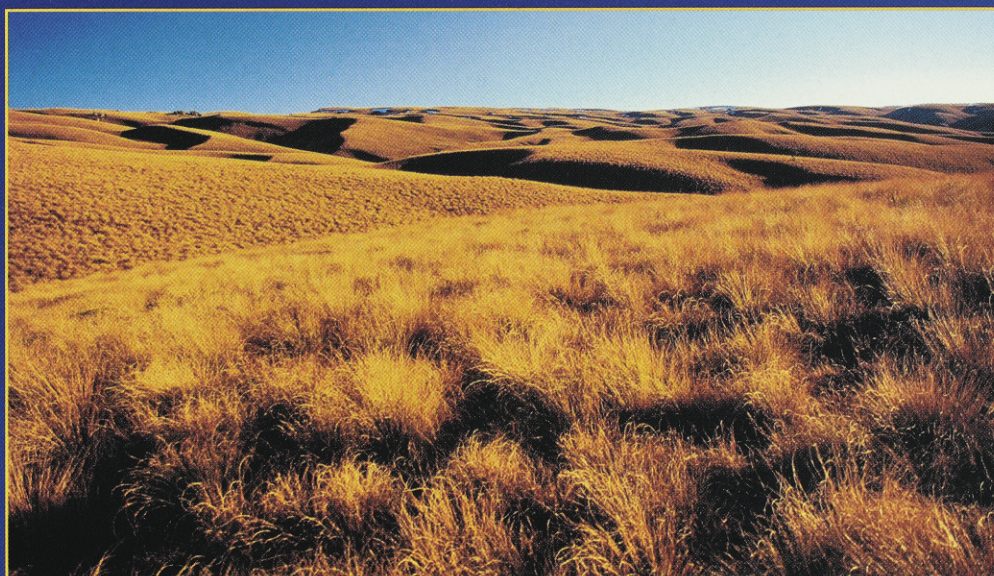
— **NEVILLE PEAT** is a Dunedin author whose work is profiled in this magazine on page 20. **GILBERT VAN REENEN** of Clean, Green Images recently exhibited his photographs of Te Papanui in Lawrence, see www.cleangreen.co.nz



Towards Davidson's Top from near Lake Onslow — red tussock in the foreground.



An alpine plateau on the Rock and Pillar Range adjacent to the northwest boundary of Te Papanui.



The Nardoo scientific reserve above Lake Mahinerangi has been incorporated in the park.