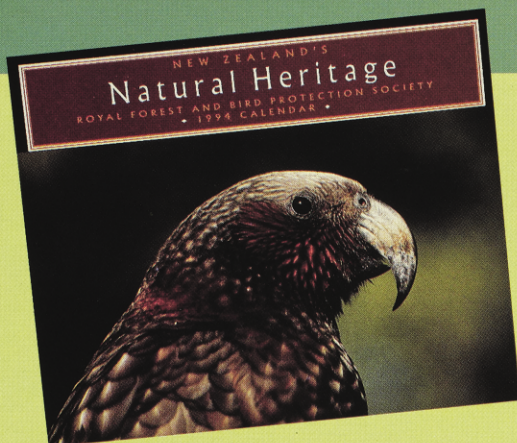


# Forest and Bird's 1994 CALENDAR



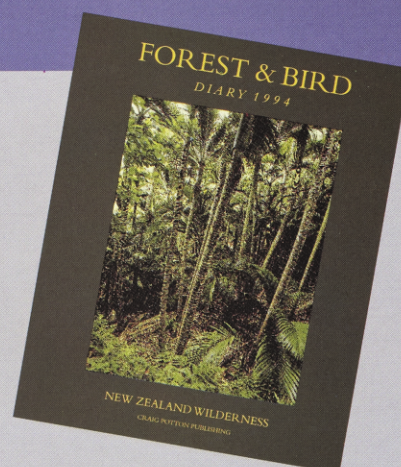
Our 1994 Calendar continues the outstanding quality of previous years, featuring local landscapes, plants and animals by New Zealand's finest nature photographers including Brian Enting, Nic Bishop, Don Hadden and Brian Chudleigh.

Buy now for friends and relatives overseas (within 200g postal rate).

Calendar will be available 1 August. Order now and don't be disappointed.

Retail price \$13.95. Special price to members **\$12**  
(including post and packing).

# Forest and Bird's 1994 DESK DIARY



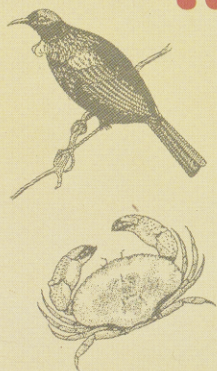
Our beautifully produced New Zealand wilderness diary includes:

- 54 images of NZ landscapes, plants and wildlife.
- Photographs by Craig Potton and others.
- Plenty of space to write.
- Spiral bound to lie flat.

Retail price \$25. Special price to members **\$19.95**  
(includes post and packing)

Send your order with a cheque to Forest and Bird Mail Order, PO Box 631, Wellington.

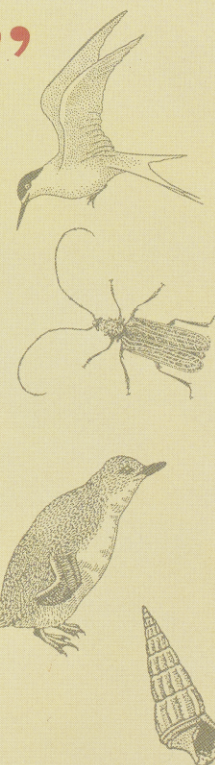
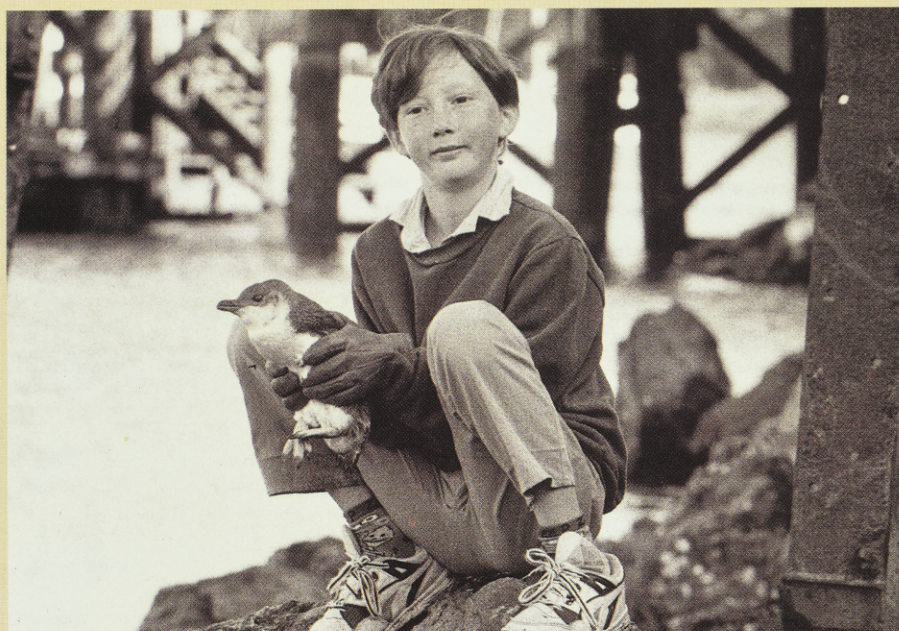
## "I belong to the KCC"



### COVER

In the first major direct action by conservationists since the 1970s, protesters blocked the road out of Ianthe Forest in South Westland in late March. The protesters were drawing attention to the government's decision to breach the West Coast Forests Accord and extend the clearfelling of rimu forests for another two years.

RICHARD COSGROVE



## KIWI CONSERVATION CLUB

• learning • enjoying • helping nature

For children up to college age

\$10 subscription; \$20 family, group, school. Forest and Bird, PO Box 631, Wellington.

