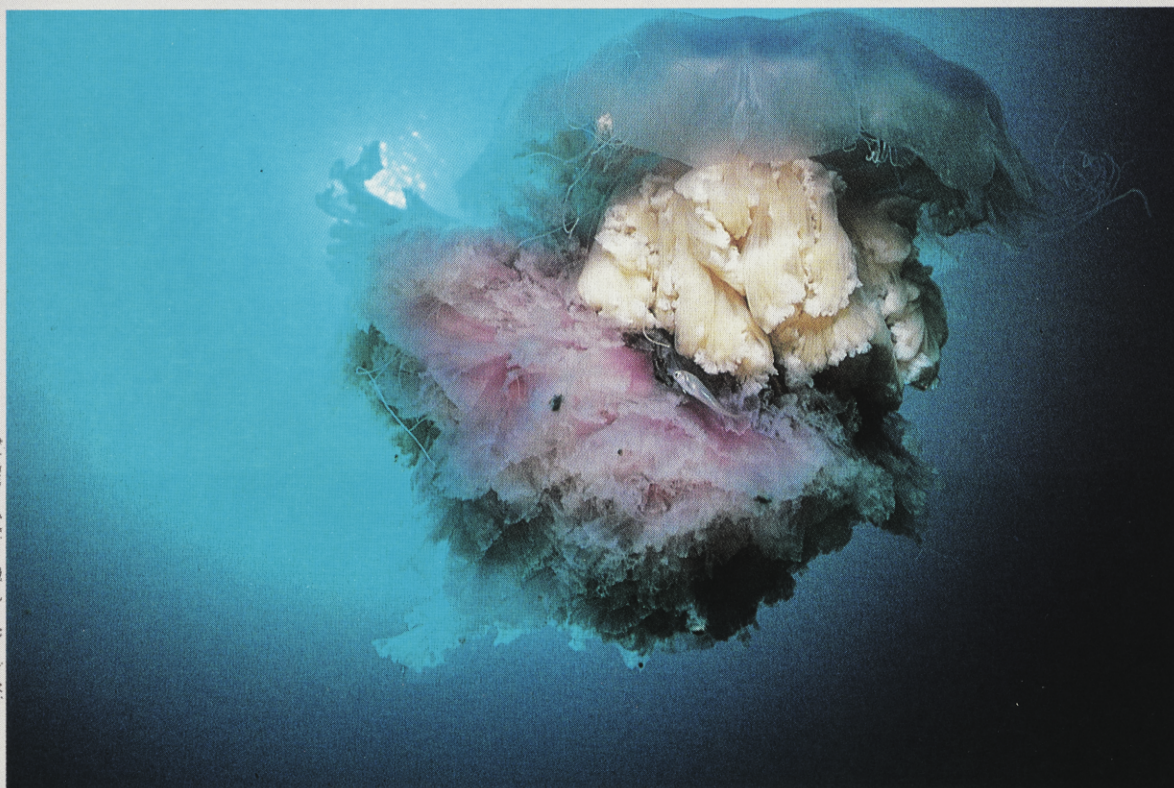


**T**HE RARE, FLIGHTLESS AUCKLAND ISLAND TEAL. No more than 600 of this largely nocturnal species survive. The photographer describes the teal as "self assured and cheeky, relatively unafraid of humans. When it was first approached by me it backed itself into a cave but in the end it walked across my feet in order to get OUT!" Photo: Kim Westerskov



**L**ARGER THAN ANY JELLYFISH found around New Zealand coasts, this species of *Cyanea* jellyfish was photographed off Campbell Island. It measures up to 40 cm across, and 50 cm lengthwise. The small fish accompanying it is an undescribed species. Photo: Kim Westerskov. Opposite: SCIENTIST COLIN MEURK has described the subantarctics as "awful for people, wonderful for plants!" Spectacular megaherbs such as the giant daisy *Pleurophyllum speciosum*, with its tall flower stalks and large leaves, demonstrate the truth of his statement. Photo: Graeme Taylor