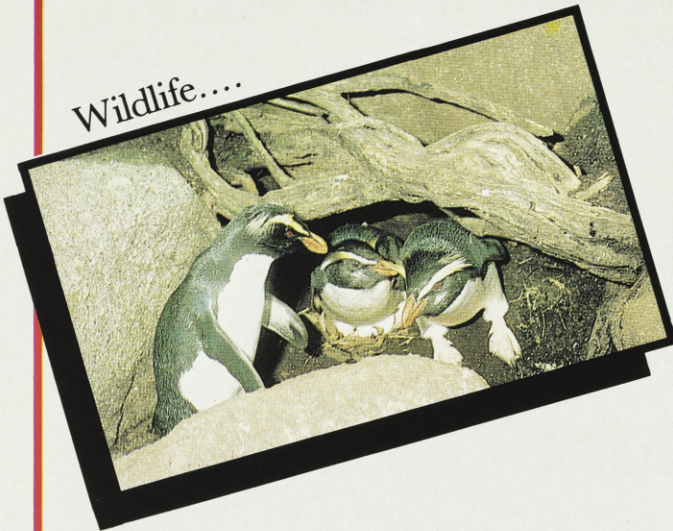
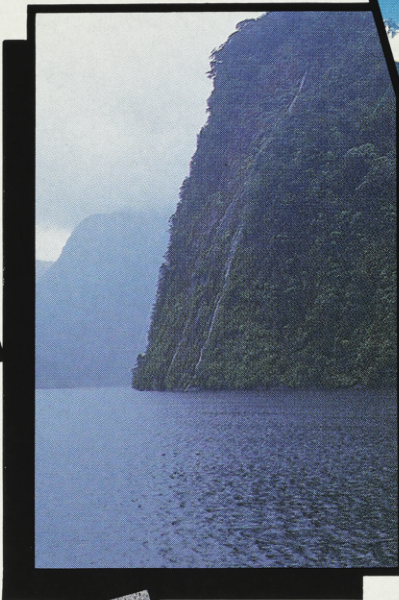


1987 FOREST AND BIRD CALENDAR THE SOUTH-WEST OF NEW ZEALAND IS:

Wildlife....



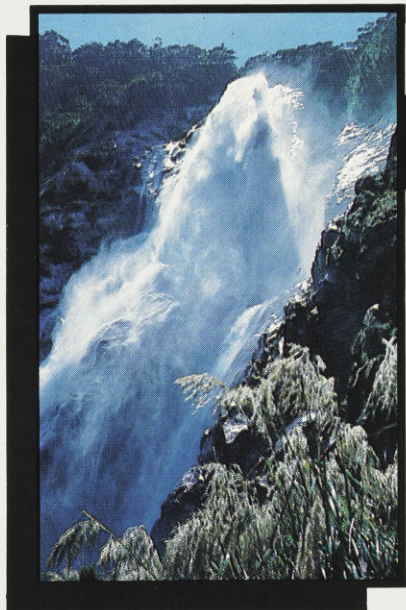
Fjords....



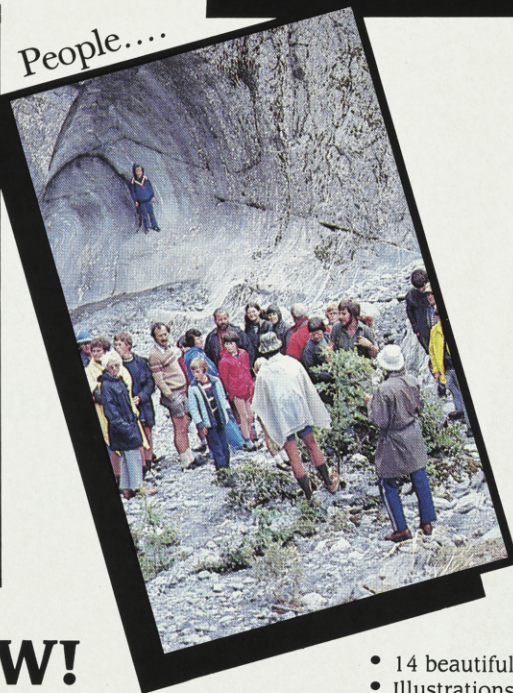
Glaciers....



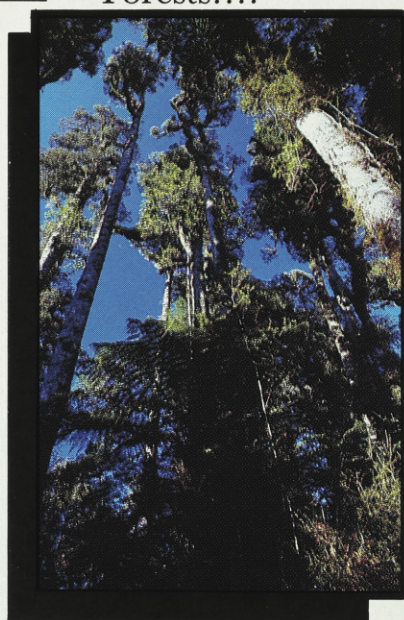
Waterfalls....



People....



Forests....



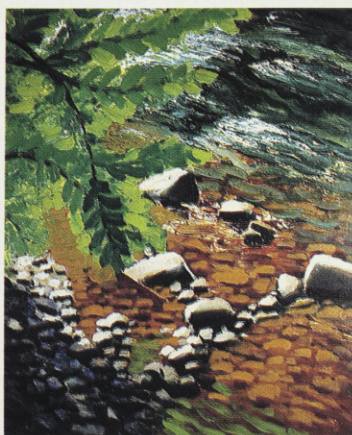
ORDER NOW!

All this and more is featured in Forest and Bird's exciting 1987 World Heritage calendar. World Heritage status is granted to the most special places in the world, in recognition of their unique qualities. The south-west of New Zealand — from Okarito in the north to Waitutu in the south — possesses the most varied and magnificent scenery and natural features of any area in New Zealand. The tallest mountains, highest waterfalls, loftiest trees, most isolated coastlines and least accessible wilderness are found in the south-west.

- 14 beautiful large colour photographs plus 13 postcard size
- Illustrations by some of NZ's finest photographers
- Printed on high quality paper
- Extra large format
- Attractive cardboard envelope

Retail price of \$9.95 reduced to \$8.95 (will be ready in plenty of time for overseas mailing). Forest and Bird will send direct to a nominated overseas address by surface mail for \$11.15. Offer closes August 1.

Buy now and save twice — once on the pre-publication discount and once to avoid GST! Order form in the mail order catalogue found with this magazine.



Huatoki — Michael Smither Greeting Card

Artist and conservationist Michael Smither has generously offered the Society reproduction rights to one of his latest paintings **Huatoki**, depicting a stream near New Plymouth. This delightful painting is now available in the form of a greeting card to members at \$1.00 each, or five cards for \$4.00. Remember: all the funds from sale of the card go towards the Society's conservation work. Available through the Society's mail order service, PO Box 631, Wellington.