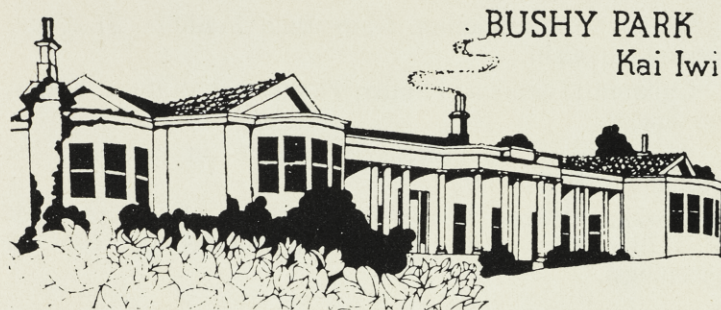


# SOCIETY'S LODGES AND HOUSES



## Bushy Park, Kai Iwi

24 km north of Wanganui

Fine old homestead, lovely grounds, 89 ha of native bush.

Make your own programme.

Electric stove, hot water, and other facilities available. Bring your own rations. Bedding supplied. Linen and towels \$1.50 per bed\*.

**Fees:** Members: single, \$9 per night; double, \$14 per night. Non-members: single, \$14 per night; double, \$18 per night. Children aged from 1 to 12 years, \$6 per night. Day visitors, members and non-members, \$1; children under 12 years, 50c; family group of two adults and children, \$3.

Custodian: C/o Bushy Park Homestead, Kai Iwi, R.D.8, Wanganui. Telephone Kai Iwi 879.

The park is closed to daytime visitors on Mondays and Tuesdays.

## Patoka Lodge

Hawke's Bay

The lodge is situated 48 km from Napier on the Puketitiri Road 8 km past Patoka, amid the 14-ha William Hartree Memorial Scenic Reserve. The lodge offers quiet retreat and bush walks of botanical interest. There are also many places of interest within a short distance.

The lodge has two bunkrooms, accommodating 10 people. Extra mattresses and pillows are available to sleep up to 20. The lodge has a fully equipped kitchen, including a refrigerator.

Visitors supply their own linen, pillow cases, blankets or sleeping bags, and cutlery. The nearest store is 8 km away. No animals are permitted.

An information leaflet is supplied with notice of booking. A key will be posted a week before the date booked and this is to be returned with payment after occupation.

**Fees (per night):** Adult members, \$1.50; junior members, 75c; adult non-members, \$2; junior non-members, \$1.

**A 50 percent deposit is required with each booking.**

For information and bookings apply to: June Northe, 212 Kennedy Road, Napier. Telephone Napier 438-193.

## Ruapehu Lodge

Whakapapa Village, Tongariro National Park

Ruapehu Lodge is now available for **members only**, and all bookings must be made with the Society's head office, P.O. Box 631, Wellington.

<b>Fees:</b> Winter season (1 June to 31 October)	\$7 per night
Summer season (1 November to 1 May)	\$5 per night
Children	\$2.50 per night

Bookings may be made 9 months in advance and must be secured by a deposit of \$1 per night per member. The full amount must be paid not later than 4 weeks before occupation.

If full payment is not received by the due date, the bunks may be relet.

All refunds are subject to a \$12 surcharge.

No animals or pets are allowed in the lodge or the national park.

There is no key at the lodge, but one will be posted within 10 days of booking.

No member may occupy the lodge without first booking through head office, Wellington.

## Tautuku Lodge

Coastal Otago

Situated 72 km from Balclutha on State Highway 92, Tautuku Lodge on the Society's 550-ha bush-clad Lenz Reserve in coastal south-east Otago is the place for that weekend or holiday in beautiful, peaceful, unspoilt surroundings.

The reserve has interesting bush walks, and native birds are numerous. The round track is a comfortable 4 hours' walk, and as this is in its formative state, visitors are requested to keep to the marked track route.

The lodge is fully equipped and accommodates eight or nine people. It has a lounge, kitchen, two bunkrooms with innerspring mattresses and foam rubber pillows, washroom with tub, basin, and shower, and an ablution block with toilets, basins, and showers. The cooking facilities in the modern kitchen are excellent.

There is also a self-contained A-frame cabin, for two adults.

Bring with you all food supplies, bed linen, and pillow cases, blankets, towels, tea-towels, etc.

Bookings are accepted up to 9 months in advance. No refunds are made unless cancellation is advised at least 1 month before reserved occupancy.

Rates per night are: Senior members, \$5; junior members, \$2; senior non-members, \$8; junior non-members (5-17 years of age), \$3.

A deposit of 50 percent is to be made with each booking.

For free brochure and all bookings send a stamped, addressed envelope to Mrs F. C. Bennett, Papatowai, R.D. Owaka. Telephone 160M.

\*All charges in these notices are subject to alteration from time to time.

(Continued on next page)