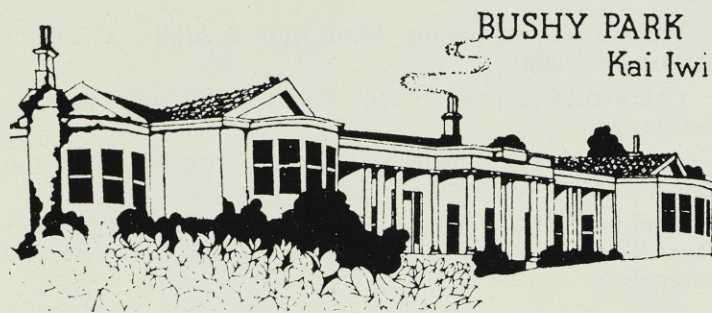


SOCIETY'S LODGES AND HOUSES



Bushy Park, Kai Iwi

24 km north of Wanganui

Fine old homestead, lovely grounds, 89 ha of native bush.

Make your own programme.

Electric stove, hot water, and other facilities available. Bring your own rations. Bedding supplied. Linen and towels \$1.50 per bed*.

Fees: Members: single, \$9 per night; double \$14 per night. Non-members: single, \$12 per night; double, \$18 per night. Children aged from 1 to 12 years, \$6 per night. Day visitors, members and non-members, \$1; children under 12 years, 50c; family group of two adults and children, \$3.

Custodian: C/o Bushy Park Homestead, Kai Iwi, R.D.8, Wanganui. Telephone Kai Iwi 879.

The park is closed to daytime visitors on Mondays and Tuesdays.

Ruapehu Lodge

Tongariro National Park

Ruapehu Lodge is available to members and guests for occupation. All bookings must be made with the Society's head office, P.O. Box 631, Wellington (phones 726-254, 728-154).

Fees: Winter season (1 June to 31 October), \$4 per night for all members of all ages; \$6 per night for all non-members.

Summer season (1 November to 31 May), adult members, \$3; junior members, \$1.50; non-member guests, all ages, \$4.

Bookings: Bookings may be made by members, sections, and branches 9 months in advance.

A deposit of 20 percent (70c per person per night) is payable on application and the remainder not later than 6 weeks before occupation. The full amount has to be paid with bookings made within 6 weeks of occupation.

If bookings are not confirmed by the due date, the space may be relet.

Refunds are subject to \$10 surcharge.

The deposit receipt will be returned with an instruction sheet listing suggested equipment which should be taken on

the trip: Tea-towels, torch, sleeping bag, blankets, sheets, and slippers or light shoes. A pillow case is essential.

The wearing of boots inside the lodge is not permitted. No animals or pets are allowed in the park.

No person may occupy the lodge without first booking through head office, Wellington.

Turner Cottage

Stewart Island

Turner Cottage, on Stewart Island, is available for renting. The cottage, a one-roomed dwelling furnished for three people, can be obtained at a rental of \$6 a day for members and \$8 a day for non-members.

For details write, enclosing a stamped, addressed envelope, to:

"Turner Cottage", c/o Mrs N. Fyfe, P.O. Box 67, Halfmoon Bay, Stewart Island.

Tautuku Lodge

Coastal Otago

Situated 72 km from Balclutha on State Highway 92, Tautuku Lodge on the Society's 550-ha bush-clad Lenz Reserve in coastal south-east Otago is the place for that weekend or holiday in beautiful, peaceful, unspoilt surroundings.

The reserve has interesting bush walks, and native birds are numerous. The round track is a comfortable 4 hours' walk, and as this is in its formative state, visitors are requested to keep to the marked track route.

The lodge is fully equipped and accommodates eight or nine people. It has a lounge, kitchen, two bunkrooms with innerspring mattresses and foam rubber pillows, washroom with tub, basin, and shower, and an ablution block with toilets, basins, and showers. The cooking facilities in the modern kitchen are excellent.

There is also a self-contained A-frame cabin, for two adults, with loft accommodation for possibly two.

Bring with you all food supplies, bed linen, and pillow cases, blankets, towels, tea-towels, etc.

Bookings are accepted up to 9 months in advance. No refunds are made unless cancellation is advised at least 1 month before reserved occupancy.

Rates per night are: Senior members, \$5 junior members, \$2; senior non-members, \$8; junior non-members (5-17 years of age), \$3.

A deposit of 50 percent is to be made with each booking.

For free brochure and all bookings send a stamped, addressed envelope to Mrs F. C. Bennett, Papatowai, R.D. Owaka. Telephone 160M.

*All charges in these notices are subject to alteration from time to time.

(Continued on next page)