

## **PROTECTION FORESTS.**

### **Neglect in New Zealand.**

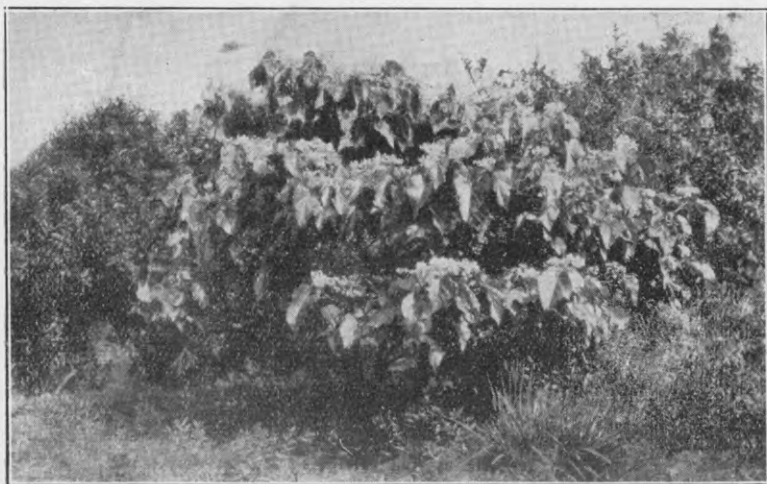
### **Dominion's Future in Peril.**

(By Captain E. V. Sanderson.)

One of the first acts of a new Forest Service is usually to demarcate as "Protection Forests" certain forests which, because of their situation, are necessary as safeguards for farm-lands, hydro-electric works, etc., against floods, erosion, and other evils which inevitably follow the destruction of forests on watersheds. This vitally important matter has not received effective attention in New Zealand.

### **Supremacy of Milling.**

Unfortunately forestry in this country has been almost entirely associated with the milling of timber and the growing of exotic timber trees. Our Forest Service was entrusted with very large areas of native forest, but it can be most emphatically stated that it has never risen to a full responsibility of the charge entrusted to it. Rather our native forests have been decried.



Nature restoring native forest on a cleared area of Mayor Island,  
Bay of Plenty.

Similar regeneration would occur in many other localities (unsuitable for farming) if man would allow Nature to have her own way.