

## SCENIC RESERVES—REAL OR NOMINAL?

---

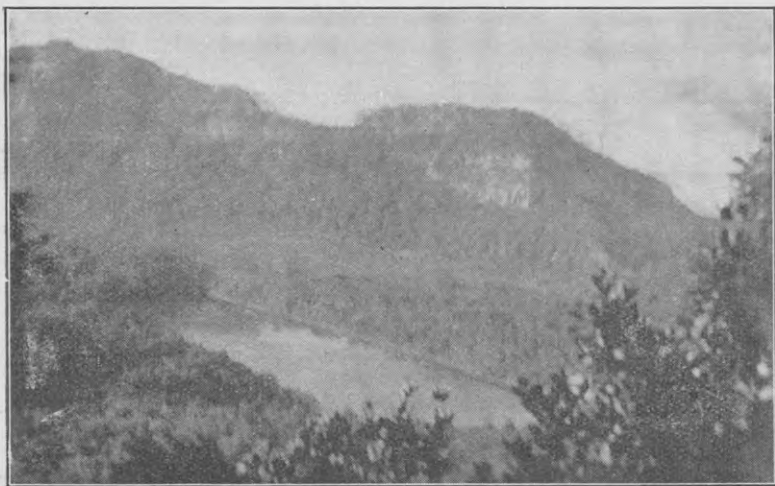
Some scenic reserves suffer damage from cattle and other browsing animals, because they are not fenced. This lack of protection is also observable on some sanctuaries for the preservation of native birds which require forests for their welfare. Some of the 4½ million pounds a year paid by the general public in the taxation of wages and salaries should be available for this purpose. Here, too, is a proper first call on any revenue derived by the State from the forests, including opossum license fees and royalties.

---

## HELP TO FIGHT THE FIRE FIEND.

---

How easy it is during the hot, dry summer-time to start a destructive fire in or about a forest! A carelessly dropped butt of a cigarette or dottle of a pipe or live ashes of a picnic fire may soon set up roaring waves of flame. We do not imagine that nature-lovers would be guilty of such slackness, but it is well to remind them that they can do very important service for New Zealand by giving helpful advice on fire risks to their friends and acquaintances.



Fire recently marred the beauty of this Sanctuary, which includes a Crater Lake, Mayor Island, off Tauranga.