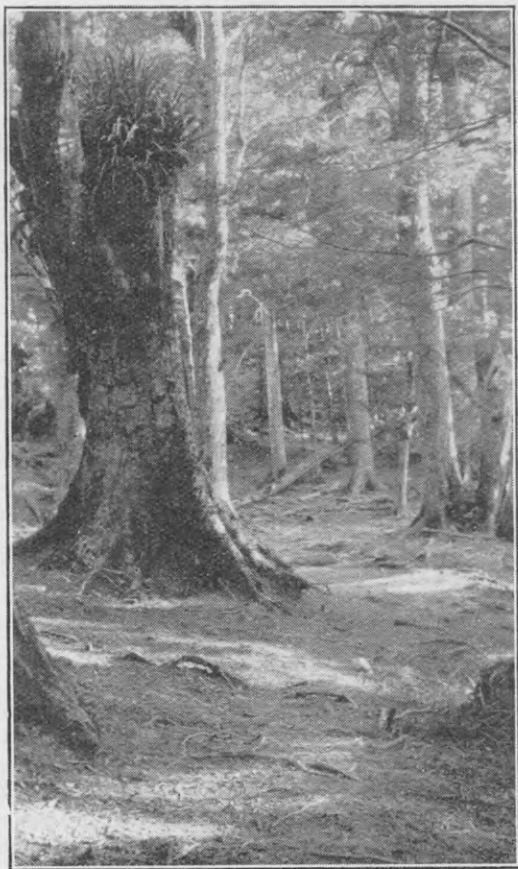


Service for the fiscal year ended 30th June, 1932, is of particular interest:—

“‘Forest management and protection investigations seek better knowledge of the many forces which together determine forest productivity. In the virgin forest these forces are in a certain balance. As soon as this balance of nature is disturbed corresponding changes begin to show themselves in the character of the forest growth. They may be relatively temporary or far-reaching. Their character and extent depend not only on the kind and amount of disturbance, but also on the natural conditions. To apply forestry it is necessary to know how to control and direct the life of the forest.’”



SERIOUS DEER DESTRUCTION IN HAURANGI  
FOREST, SOUTH WAIRARAPA.