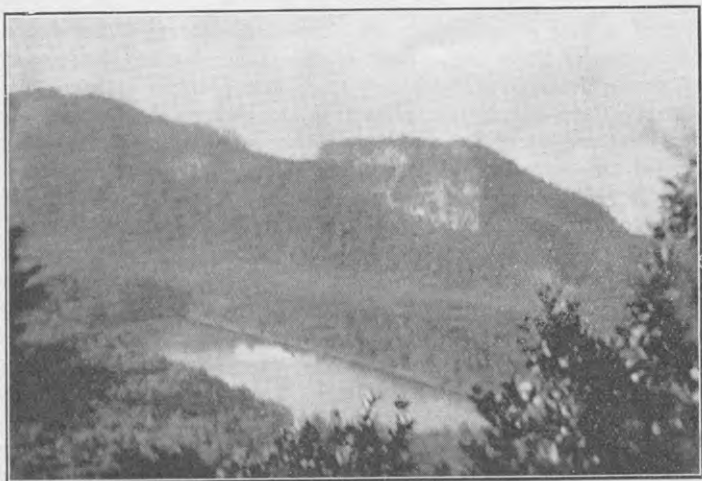


ISLAND SANCTUARIES.

By CAPTAIN E. V. SANDERSON.

A visit was paid to Mayor Island during September by the writer accompanied by Mr. J. R. Kirk, one of our Executive, and Mr. Bernard Sladden, a Vice-President of the Society. Very great assistance was given by this latter gentleman at Tauranga where his launch and his guidance were given free on behalf of the objects which the Society has for its goal. Two days were spent on this sanctuary which is owned by the Maoris but not occupied by them. The island is about 27 miles distant from Tauranga, and about 3,150 acres in extent. It is an extinct volcano with two small lakes occupying the crater. The coast line is generally of a precipitous nature. Roughly speaking, the whole island is now covered with forest, mostly young, in which bird life, with the exception of bellbirds, is far from numerous probably because plant life, bearing winter food supplies, is not plentiful. The puriri is present but so far is not sufficient to supply the winter shortage. Many seedlings are, however, coming along. An exotic (*Pinus maritima*) was firmly established around the lakes and this should be removed—now an undertaking of some dimensions. The main anchorage consists of a nice little harbour badly exposed to easterly and south-easterly winds. This is a



LAKE ON MAYOR ISLAND.