

SCHOOLS FOOTBALL.

PROVINCIAL GAMES.

JUNIORS.

LAND (3) v. OTAGO (0).

Backs: Fletcher; Halpin, Stiles, Maher; Connelly; Pasco, Henley, Morrison, Eas-ald Longley and Todd.

Forwards: Miller; Holden, Craw-kinson; Cameron, McBroy, Lyders, Chase, Brugh, Mollan, Brown and Hill.

Southland broke again, and the Otago centre, Crawford, put up an excellent run, short kick, and dash; but Henley marked and Southland moved in, Otago at once showing their packing, the clear ending 40 yards from home. Otago got a free and Southland returned, the visitors dash- ing to the home 25, where the ball went out and time sounded with the score: Southland 3, Otago nil. Mr Torrance refereed in a game that was delightfully free from whistling.

SENIORS.

SOUTHLAND (9) v. OTAGO (9).

(Maroon) (Blue).

The teams were:—

Otago: Backs—Niven, Robertson, Ir- vine (captain), Cunningham, McGrath, Ball and Gies.; forwards: Allen, Kind- ley, Murray, Ashby, Burns, McClusky, Dore, Churchill.

Southland: Backs—Broad, Wilson, Cal- der, Kennedy, Thomas, Padgett, Melvin; forwards: McLeod, Hamill, Hodge, Lee, McPherson, O'Neill, Graham, McNamara.

Southland kicked off and got into pass- ing, their position being better than that of the junior side in the backs; but the full was at least 20 yards too far away from his centre, the fault having much to do with many of Otago's gains, their very cleverly trained team taking full advan- tage of the big gap, and the Southland goal-keeper always coming up for the hop.

But for this the lad was more than good. Otago began to throw the ball about, and the work on each side was smart, the visit- ing first-five, Ball, showing sound defence. The Blues appeared to be over-coached, their passing not being so frequent as their line work, the tendency to find the line making the play uninteresting. The visitors showed better football, and had most of the first spell advantage, though the Southland forwards were better in loose rushes, Hamill, leading nearly all the attacks. Otago were often in the home 25 and forced Southland. A period of panic came to the Maroons, and a defence pass was muddled, Otago's first-five securing and running around, Churchill ending the movement with a score. Otago 3. Two Maroons had failed to tackle. From the 25 the visitors set their backs going, and the second-five nearly got over, the home backs showing no inclination to defend. Again Otago passed well, and the centre ran across to his wing, who coming at top scored wide and untouched. Otago 6. Southland kicked the 25 feebly, and Blues attacked demoralised backs, the Maroon forward slightly checking. Otago's half, Giles, picked up in a scramble and cleverly in-kicked, the Blue rush ending in a score by Cunningham. Otago 9, South- land nil. Half-time came.

The Southland coaches hadn't noticed their full's position as he was farther from the play than ever. Otago got into back attack, but failed to continue, and the Southland forwards took charge, Hamill leading. The visitors did not do ground work, and three passing rushes by Maroons looked fair, their forwards continuing by walking over Otago, who forced. The home lads scrambled them back and in the 25 secured well and smartly from a set-scrum, the pass going from half to fives, a jink allowing Kennedy to score near the corner. Otago 9, Southland 3. Exchange of kicks was to Otago's advan- tage, but a long, determined Maroon rush came to Otago's 25, where a mull lost a score. However, the forwards continued to beat Otago, and an offside allowed Cal- der to kick a good goal. Otago 9, South- land 6. Right away, Southland passed and kicked to nearly 30 yards from Otago's line, where the excellent packing, heeling, and kicking of the visitors cleared them to the press table. Wilson secured an un- lined punt, and the forwards carried on the good work, dominating the game for a time. A heel saw Melvin feeding on the short side, Wilson cannoning the cor- ner flag with his head and receiving fatherly treatment from Mr Stalker. The re- sumption of play put Southland into at- tack, the ball moving across Otago's goal, Hodges securing and crossing very wide. Calder hit the post in a difficult kick. Otago 9, Southland 9. Attack continued, and Otago were lucky to force. Then the visitors rallied, and from three lines kicked into Southland 25. There the play was not varied, the backs lacking initiative and the half refusing to open the game, evi- dently through fear of the deadly Maroon forward rushes. Otago's full was excellent in take and in securing full line value for his kick. Time came with Southland in Otago's 25, and the score Otago 9 (three tries), Southland 9 (two tries, one penalty goal). Mr Stalker was most judicious in keeping the game fast. The draw is all the more meritorious as Otago have a stone heavier limit in their senior competition, and some of the Southland lads have not been available for the inter-school matches here. An endeavour should be made to even the handicap.

WEEK OF PITY.

AN APPEAL

On Behalf of the Starving Children of Europe.

COUNTRY COLLECTIONS NOW IN FULL SWING.

WHAT YOUR MONEY WILL DO.

2/- will provide a Daily DINNER for One Child for One Week.

£1 will Feed and Clothe a Naked Starving Child.

£100 will Feed 1000 Children for One Week.

Any further information from members of the Committee: Chairman, John Stead, Esq.; Vice-Chairmen, Messrs R. A. Ander- son and H. W. Royds; Hon. Treasurer, Mr F. Burwell (Box 51); Hon. Secretary, Mr H. J. Farrant (Box 272); Hon. Assis- tant Secretary, Mr A. S. Wallace. 4491

LAND FOR DISCHARGED SOLDIERS.

District Lands and Survey Office, Invercargill, 1st September, 1920.

NOTICE is hereby given that the under- mentioned land will be open for selection by soldiers only and applica- tions will be received up to 4 p.m. on MONDAY, 11th October, 1920.

Sections 1s to 9s, Strathvale Settlement. Areas from 71 acres to 138 acres. Half- yearly rentals from £45 to £93.

Situated from three to four miles from Otautau Railway Station, school, etc., and from one to three miles from dairy factory.

First-class dairying land. Full particu- lars, including sale plans, may be obtained on application to this office.

THOS. BROOK, Commissioner of Crown Lands.

The Diggers' Motor Car, FOR HIRE.

SPLENDIDLY UPHOLSTERED

FIVE-SEATER,

WELLYS' KNIGHT CAR—35 h.p.

R. A. BAIRD.

Ring 'Phone—744.

REMOVAL NOTICE.

SHIELDS, JENKINS & CO., LTD.

(Late Farmers' Machinery Exchange).

PROPRIETORS & MANUFACTURERS

STORRIE IMPROVED

MILKING MACHINE.

Wish to notify their Customers that they have removed to premises at rear of Club Hotel.

ENTRANCE:

DEE ST.: Club Hotel Right-of-way.

LEVEN ST.: Mackerras and Hazlett Right-of-way.

P.O. BOX—278.

TELEGRAMS: "Pulsator," Invercargill.

A Japanese internationalist states that the military are responsible for the wide- spread Anti-Japanese feeling, which is also evident in Britain and France.

We are now ready for the Spring Season with all the latest novelties. Our selection of laces and embroideries cannot be excelled, while the moderate prices, and high grade quality of these goods will appeal to all thrifty shoppers. Patently Chinese hand made laces and insertions 1 to 5 inches wide, from 10d to 5s 11d per yard. A variety of patterns in Val- enciennes torchon, imitation Maltese and filet laces from 1d to 2s 11d per yard. Real filet lace and insertion 6s 3d and 6s 6d per yard. New camisole embroideries 18 to 27 inches wide 1s 11d, 2s 3d, 2s 11d to 15s 6d per yard. Embroidery flounc- ing 27 to 42in wide 5s 3d to 7s 6d. Em- broidery edgings and insertions in new patterns 1 to 6 inches wide, 7d to 5s 11d yard. See windows and fancy department for many new novelties at H. and J. Smith, Ltd., Progressive Drapers, Tay street, Invercargill and Main street, Gore.

When I grow up to be a man
I'll smoke cigars! like Uncle Dan,
And flit with gulls, and own a car,
And wear long pants! like my papa.
And when the winter days are damp,
I'll have goloshes and a gamp;
But coughs and colds I'll not endure—
I'll just take Woods' Great Peppermint Cure.

A DESCRIPTION OF STYLES

—AT—

"THE EXHIBITION."

COSTUMES.

STYLISH GREY FLANNEL COS- TUMES, featuring the new 34-inch Coat. Trimmed Self Buttons with belt high up on Coat and smart two- piece skirts. Bust sizes 32 to 38 inch. Splendid value at 130s, 147s, 150s, and 168s.

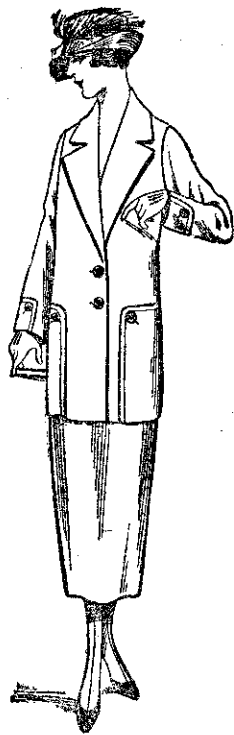
EXCEPTIONALLY SMART NAVY ALL-WOOL SERGE COSTUMES; guaranteed dyes. These are a big feature here. Bust sizes 32 to 40-inch. Splendid fitting. Featuring every new idea. Fully 100 styles to choose from. Prices 8 to 15 guineas.

HIGH-CLASS GARBARDINE COS- TUMES, in numerous stylish shapes half lined silk, etc., guaranteed clothes. Sizes 34 to 38-inch busts. Prices 8 to 12 guineas.

A very smart range of PLAIN AND CHECKED TWEED COSTUMES is shown. Prices from 5 guineas to £8 19s 6d.

BLACK SERGE COSTUMES.

We always feature a fine range of these, also in Black Gabardine. Prices 8 to 14 guineas.



Thomson & Beattie, Ltd.

THE QUALITY HOUSE.

'Phone 13. P.O. Box 43. Tay Street, Invercargill.

CALEDONIAN HOTEL,

DUNEDIN.

TUAPEKA ALE AND SPEIGHT'S ALWAYS ON TAP.

P. V. STEVENS, Prop., 19 Carrol street, Dunedin.

ARE YOU A BOHEMIAN?

THE LAUGHTER TRIAL.

LABOUR PUTS ON A BOHEMIAN NIGHT!

LOCAL TALENT UP TO PROFESSIONAL STANDARD.

AN EVENING OF FUN, FROLIC, AND HIGH-JINKS.

Diggers, Workers, Women, Children, and Capitalists to roll along.

GRAND THEATRE,

SEPTEMBER 15, at 8 p.m.

2s and 1s.

Under 5 and over 70 Free.