

"HIGHLANDER" MILK PRODUCTS

Are Manufactured in Southland, and
are made by a Company all British
owned.

HIGHLANDER BRAND

Is a guarantee of quality and nation-
ality.

It can always be depended upon.



Kennel Notes.

(By "Rover.")

A few observations with regard to Dun-
edin Fanciers' Show may be interesting.

Perhaps the withdrawal as members
from the Dunedin Fanciers' Club by a
large section of the dog fanciers who with-
held their entries (save one or two) may
have had an influence on the number of
dogs exhibited.

The committee was quite satisfied, never-
theless, with the support received and are
going ahead with the scheme to bring
Sir Crabtree, the English judge, to ad-
judicate at the 1921 show.

Two very fine setters were put down,
an Irish and an English. Each dog would
be hard to beat at any show in N.Z.
Setters as a rule throughout the Dominion
are bred up to a fairly high standard and
the type is usually very good.

The Irish dog should be heard of later
as he has a commanding appearance, and
his coat, when full, should be the dark
red which breeders so much desire.

The English dog was a beautifully mark-
ed one, but was shown a trifle on the
thin side, which seemed to detract from
him that nice bloom which was very notice-
able in the other dog.

There were several brown retrievers
benched and one of these was a bitch
much fancied by those interested in the
breed. Her coat was good but she was
a bit light in eye and was shown too fat.

The Airedales on the whole were of the
same type. Those winning in the open
classes being about the cream in the South
Island. Many critics would like to see
the Airedale stouter in build. The pre-
sent type is running a bit shelly.

The wire fox-terriers were a keen com-
petition, only the winning dog being a sure
thing, the others were fairly hard to place.
The puppy which made such a hit at the
Christchurch evening parade was well out
of the running, and we don't blame the
owner for allowing him to remain in Dun-
edin.

The smooth fox-terriers, outside of the
two placed bitches in open and the two
winning dogs, were a grubby lot and some
were exhibited by so-called breeders. One
wonders what has become of the bucket,
or do they not know what a fox-terrier
should be like? The bitch placed second
in the open class hailed from the same
kennel as the winner. Mr Woodford of
Wellington being the breeder of the pair.
The fancy in Invercargill is lucky in hav-
ing one of the best smooth terriers in the
Dominion at the present time, she is
certainly the best in the South Is-
land. We congratulate the joint-
owners. The two dogs call for no special
mention—they had some good points but
were not up to the grade of the bitches.

There was a good Irish terrier benched—
she was bred in Dunedin and will possibly
do well when she strays into competition.
The only dog shown was not like an Irish
terrier, and as his breeder remarked, was
only a pet.

Pomeranians made an interesting show
and the one which took the eye was a
miniature black. He was very shy in
the ring and had only been introduced to
the collar and chain on show day, this
event proving too much for him. When
will owners learn to use the lead for a
fair period prior to the show? Dogs require
to be very happy when making their ap-
pearance before the judge. Style counts
so much.

Cockers were not so numerous as pre-
viously, though the quality must have been
there as the bracelet winner turned up in
the winning cocker dog. This is the first
occasion in the experience of the local
fanciers that this honour has come to In-
vercargill. There is no reason why some
of our other breeders should not land the
mustard in the near future.

The winning cocker bitch is a fitting
mate for the dog, and it is just a toss up
which is the better one. As a sporting
bitch they will take a power of beating.

Collies were not numerous. The winning
collie suffered defeat in the workers class,
but we couldn't follow out the placing of
the dogs.

The beardedie is a beautiful dog and comes
from "The Rocks," Central Otago. At
Dunedin Kennel Show he was knocking in
the bracelet, while at the Fanciers' Show
he was called off before they had gone a
furlong.

The fancy collie was a handsome dog,
but he was the only one. We can well
remember the good old days when the
benches were well filled with many of the
above breed.

DRAUGHTS.

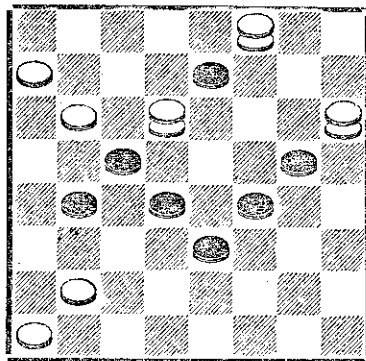
(By F. Hutchins.)

Draughts Club meets in Athenaeum on
Wednesday and Saturday evenings. Visi-
tors invited.

PROBLEM 17.

(By J. W. Gamsby, Chakrata, India.)

BLACK.



WHITE.

Black to play and win.

Black 7, 14, 16, 17, 18, 19, 23.

White 5, 9, 25, Kings 3, 10, 12.

A creditable production.

From the "Draught's World."

SOLUTION TO PROBLEM 16.

Black 2, 5, 6, 28, King 10.

White 11, 13, 17, 21, King 3.

White to play and draw.

11.7 28.32 12.16 27.25

2.11 3.8 32.27 14.9

17.14 11.16 16.11 5.14

10.17 8.12 20.24 15.18

21.14 16.20 11.15 Drawn

(A) 16.19, 12.16, 19.24, 16.11, 32.27, 11.15,

27.23, 14.9, 5.14, 11.15. Drawn.

The following is a double corner game
played in the recent National Handicap
Tourney in Timaru, between Russell
(black) and Botting (white).

9.14	4.8	14.17a	5.9	3.28
22.17	23.19	21.14	19.15	Black
11.15	15.18	16.17	9.14b	wins.
25.22	22.15	23.14	26.23	
8.11	11.18	9.18	14.17	
17.13	26.23	24.20	23.14	
5.9	1.5	17.21	7.10	
29.25	31.26	28.24	14.7	

(A) This exchange appears to be a good
one gives black a strong position.

(B) A good trap which succeeded in secur-
ing one of the few wins against the re-
doubtable Botting. 24.19 appears to
draw.

The following is a long waiting shot
from Drummond's first edition 1838.

DOUBLE CORNER.

9.14	24.19	11.16	22.18	9.13	18.9
22.18	8.12	29.25	7.11	18.9	11.18
5.9	27.24a	4.8	26.22	5.14	21.14
25.23	16.20	18.15	3.7	22.18	10.17
12.16a	31.27	1.5	30.26	13.17	Black
					wins.

(A) This move is rarely played, if 24.20,
16.19, 23.16, 26.19, 8.12, and we have
the White Doctor opening.

(B) Losing move. The late R. E. Bowen
has shown a neat draw by 30.25.

The subjoined game occurred by corre-
spondence between Messrs D. Horsmusjee,
Rangoon, Burmah, and Drummer J. W.
Gamsby, Chakrata, India:—

GAME 2135—SOUTER.

Black—Horsmusjee.	White—Gamsby.
11.15	8.11
23.19	27.23
9.14	4.8a
22.17	22.17
6.9	15.18b
17.13	32.27
2.6	11.15
26.22	30.26
	22.15
	25.4
	White wins.

(A) 14.17, 21.14, 9.27, 32.23, 4.8, 23.18,
5.9, 31.26, seems best at this stage.
—J.W.G.

(B) The losing move.

Winter Bros.,

GENERAL CARRIERS,

SPEY STREET,

WISH to announce that they have a
first-class Motor Lorry for Hire.

All kinds of Carrying undertaken, and
Furniture removed.

The Lorry has comfortable seating ac-
commodation for twenty passengers and
will take parties out day or night at rea-
sonable prices.

GIVE THE DIGGER CARRIERS A
SHARE OF YOUR PATRONAGE.

OFFICE—SPEY STREET.

'Phone—779.

WORTH INSPECTING.

1610 ACRES LEASEHOLD.

33 YEARS' LEASE

WITH RIGHT TO PURCHASE.

27 years of Lease to run.

RENTAL—£200 PER ANNUM.

CARRYING—

800 EWES

400 DRY SHEEP

100 HEAD CATTLE.

Can be made to carry a good deal more
stock. Grows first-class turnips. Well
fenced and subdivided.

BUILDINGS—

7-ROOMED HOUSE (new); all con-
veniences.

WOOLSHED, CHAFF-HOUSE and
HUT, STABLE.

Five Miles from Station.

One Mile from School and Post Office.

PRICE: £5 PER ACRE GOODWILL.

TERMS—£2500 CASH.

STOCK, ETC., AT VALUATION.

NATIONAL MORTGAGE AND

AGENCY CO. LTD.

W. E. TAYLOR, Manager.

WILLIAM JOHNSON,

GENERAL MERCHANT,

Corner Bowmont and Canon streets.

THE Best of GROCERIES, etc., always
in stock.

A TRIAL SOLICITED.

For Furniture.

D. R. DOUBLE,

FRUITERER, TAY STREET.

'Phone—270.

ALL THE SEASON'S CHOICEST

FRUIT

And

CONFECTIONERY

IN STOCK.

Come to

W. S. Robinson & Co.,

The Reliable Furniture House,
KELVIN STREET.

'Phone—760.

That is strikingly handsome
and conscientiously made in
every detail.