

1939.
NEW ZEALAND.

DEPARTMENT OF LANDS AND SURVEY.
SETTLEMENT OF CROWN LANDS
(ANNUAL REPORT ON).

Presented to both Houses of the General Assembly by Command of His Excellency.

CONTENTS.

GENERAL REPORT:—	PAGE	APPENDIX I— <i>continued</i> .	PAGE
Review of Past Year	2	Settlement of Crown Lands— <i>continued</i> .	
Legislation	2	Taranaki	36
Protection of High and Steep Country and Bush- preservation generally	2	Wellington	37
Small Farms Board: Land-development—		Nelson	37
General	3	Marlborough	37
North Auckland	4	Westland	38
Auckland	10	Canterbury	38
Taranaki	22	Otago	39
Wellington	27	Southland	39
Hawke's Bay	27		
Nelson	28	APPENDIX II:—	
Otago	29	Land for Settlements—	
Land-development under Land Laws Amendment Act, 1929—		Summary of Settlements established	40
General	30	Extracts from Reports of Commissioners of Crown Lands—	
North Auckland	30	North Auckland	48
Auckland	30	Auckland	48
Hawke's Bay	30	Gisborne	48
Taranaki	30	Hawke's Bay	49
Canterbury	31	Taranaki	49
Special Settlement of Inferior Lands	32	Wellington	49
Lands for Selection	33	Nelson	49
Receipts	33	Marlborough	49
Postponements, Remissions, and Arrears of Rent	33	Westland	49
Rebates	33	Canterbury	50
National Endowment	33	Otago	50
Educational Endowment	33	Southland	50
Lands reserved for various Purposes	34		
Retirement of Under-Secretary	34	TABLES:—	
Expenditure	34	Table 1.—Lands of the Dominion, Position of (approximately)	50
APPENDIX I:—		,, 2.—Selections during the Year	51
Settlement of Crown Lands—		,, 3.—All Lands held on Lease	51
North Auckland	35	,, 4.—Lands-for-settlement Lands	52
Auckland	35	,, 5.—Endowment Lands leased and ad- ministered by Land Boards	52
Gisborne	35	,, 6.—Receipts, Arrears, and Postponements	53
Hawke's Bay	36		

SIR,— Department of Lands and Survey, Wellington, 1st July, 1939.

I have the honour to submit herewith the annual report on the settlement of Crown lands for the year ended 31st March, 1939, together with particulars of the special settlement of inferior lands, of the development work that is being carried out on unoccupied Crown and settlement lands, and of the operations under the Small-farms Scheme.

I have, &c.,
R. G. MACMORRAN,
Under-Secretary.

The Hon. Frank Langstone, Minister of Lands.
1—C. 1.

REPORT.

REVIEW OF PAST YEAR.

FROM a climatic point of view the past year was, in so far as the greater part of the Dominion was concerned, not favourable for those engaged in farming pursuits. Most districts were adversely affected by a cold and wet spring, followed by an exceptionally dry spell during the late summer months. These conditions resulted in a lowering of production and a consequent drop in the revenue derived from the land.

Dairy-farmers in particular suffered from the lack of rainfall, and this factor contributed to a reduction in the production of butterfat. As a result of the guaranteed price, however, the cash returns of those engaged in this branch of farming were fairly well maintained.

Those engaged in sheep-farming found conditions very difficult owing to the low prices for wool and the depressed state of the market for surplus sheep. This applied particularly to pastoralists on high country, whose income is derived mainly from the sale of fine wools.

The grain crops, on the whole, gave satisfactory returns, and in the southern districts there were some very heavy yields.

The departmental receipts, although below those of last year, have kept up well, and, following on the completion of action connected with applications under the Mortgagors and Lessees Rehabilitation Act, 1936, the majority of settlers, under normal weather conditions and with average prices for farm-produce, should be able to meet their future commitments.

Very satisfactory progress has been made in the development of Crown and settlement land, and the reconditioning of deteriorated holdings which have reverted to the Crown. These matters are dealt with in detail under separate headings.

Selections of Crown and settlement lands on all tenures during the year totalled 271,549 acres. This subject is dealt with more fully further on. At the 31st March the tenants on the books of the Department numbered 36,694, occupying a total area of approximately 18,067,226 acres. Pastoral runs account for 8,168,787 acres, while 1,783,304 acres of purchased estates are held under the provisions of the Land for Settlements Act.

LEGISLATION.

The Reserves and other Lands Disposal Act, 1938, contains thirty-nine sections dealing with Crown lands, reserves, &c.

PROTECTION OF HIGH AND STEEP COUNTRY AND BUSH-PRESERVATION
GENERALLY.

During the year further attention has been given to the question of the best method of dealing with blocks of Crown land which possess little, if any, value for settlement, but which nevertheless have a very real value to the State if they can be conserved in their natural state. As a result, areas totalling nearly 250,000 acres were handed over to the State Forest Service for proclamation as permanent State forest, while approval was also given to the permanent reservation of over 150,000 acres of provisional State forest reserves. Dealings of this kind during the past three years have been as follows :—

			Crown Land pro- claimed as Perman- ent State Forest.	Provisional State Forest Reserves made Permanent Ones.
			Acre.	Acre.
Year ended 31st March, 1937	54,437	95,009
Year ended 31st March, 1938	158,592	31,518
Year ended 31st March, 1939	249,757	151,413
Totals for three years	462,786	277,940

An endeavour has also been made to exercise closer control over high-country runs let under pastoral licenses with a view to the checking of indiscriminate burning and burning-off at wrong times of the year, and various cases that have come under notice have been investigated with a view to impressing on the licensees concerned the necessity of complying with the conditions of their licenses.

Various freehold properties which are situated in high country in various parts of the Dominion and which should, if possible, be owned by the State for water-conservation and protection purposes have been noted, but as explained in last year's report both legislative authority and finance for their acquisition have been lacking. There has, however, been considerable activity in the purchase of privately owned bush lands for scenic reserves within the somewhat narrow limits imposed by the smallness of the Department's vote for that purpose.

SMALL FARMS BOARD: LAND-DEVELOPMENT.

In the report for the year 1937-38 reference was made to the fact that the Small Farms Board was concentrating on the development and reconditioning of unimproved and deteriorated Crown lands. No change of policy has been necessary, as the Board is still convinced that the type of settler in which it is interested—*i.e.*, men with experience but with little or no capital—has the best prospects of success when established on “going concerns” that have been tested under actual farming-conditions.

The bulk of the development work is being undertaken in the King-country and Bay of Plenty districts, and is under the supervision of the Superintendents of Land-development, Te Kuiti and Auckland, respectively. These two officers control 98,045 acres of the total area of 120,835 acres on which development is now proceeding, and great credit is due to them and their respective staffs for the manner in which their responsible duties have been performed and for the energy and enthusiasm displayed in this new phase of the Department's operations.

In districts where the Board's operations are limited to one or two blocks the supervision is carried out by the Commissioners of Crown Lands.

The increase for the year in the area under development—38,083 acres, approximately—is accounted for as follows :—

Area.			Block.				Location.
A.	R.	P.					
185	3	27	Addition to Kohua Block	King-country.
119	3	28	Addition to Edgecumbe Block	Bay of Plenty.
2,128	1	30	Addition to Waitanguru Block	King-country.
4,055	0	0	Mihi	Rotorua-Taupo.
3,306	0	0	Paeroa	Rotorua-Taupo.
2,940	0	0	Reporoa	Rotorua-Taupo.
5,400	0	0	Waikite	Rotorua-Taupo.
444	3	0	Addition to Arohena Block	King-country.
211	2	0	Addition to Arohena Block	King-country.
86	0	0	Addition to Waitanguru Block	King-country.
323	2	0	Addition to Arohena Block	King-country.
144	2	7	Addition to Arohena Block	King-country.
418	0	0	Addition to Arohena Block	King-country.
339	3	15	Addition to Arohena Block	King-country.
3,350	0	0	Tapuwae	King-country.
200	0	0	Addition to Benton's Block	King-country.
666	0	0	Addition to Mapara Block	King-country.
985	0	0	Addition to Waitanguru Block	King-country.
803	2	23	Addition to Waitanguru Block	King-country.
171	0	9	Addition to Arohena Block	King-country.
163	1	10	Addition to Arohena Block	King-country.
28	0	6	Addition to Pururu Block	King-country.
278	0	0	Addition to Mapara Block	King-country.
120	1	10	Addition to Paeroa Block	Rotorua-Taupo.
1,580	3	9	Addition to Paeroa Block	Rotorua-Taupo.
1,945	3	13	Kairangi	Waikato.
2,433	3	17.4	Karakariki	Waikato.
3,676	0	12.1	Wharepapa	Waikato.
364	0	0	Addition to Karakariki	Waikato.
376	0	0	Addition to Ngatamahine	King-country.
838	0	0	Addition to Piu	King-country.
38,083	1	16.5					

One of the major problems facing farmers in parts of the North Island is the spread of ragwort, with the resultant loss of grazing and increase in stock mortality. The Department has faced up to the position so far as its own lands are concerned, and has sanctioned an extension of the reconditioning work carried out by the Small Farms Board on abandoned Crown leaseholds which have failed to attract suitable selectors although offered on attractive terms.

On the 1st June, 1938, the Board gave effect to an agreement between the Waikato Land Settlement Society and the Crown by assuming control of the Kairangi, Wharepapa, and Karakariki Blocks, on which the Society had been carrying out development with a view to the ultimate allotment of sections to some of its “unemployed” workmen. Ten settlers had already been started on their own at the date of the change over, and arrangements are being completed for the allotment of further subdivisions before the commencement of the 1940-41 dairying season.

The board of directors of the society has been retained in an advisory capacity to ensure the faithful adherence to the original policy of the Society, which the Government has undertaken to respect.

The extension of the development schemes greatly increased the demand for camp accommodation, and central depots were established for the building of huts, store-sheds, &c. Thirty-seven carpenters were employed at 31st March, 1939, in the Te Kuiti depot, the output from which exceeded four hundred huts.

With a view to curtailing as far as possible the stock purchases on the open market, the policy of breeding sheep and cattle suitable for the particular requirements of the schemes has been actively followed. The eezema epidemic had a marked effect on the lambing percentage in the King-country district, but the position will gradually improve if there is no further outbreak of the disease.

The production and stock figures for the year compared with those for 1937–38 are of interest :—

STOCK CARRIED.						1938.	1939.
Sheep	57,615	81,848
Dairy cattle	5,322	7,227
Run cattle	4,469	10,142
Horses	359	671
Pigs	2,520	1,408

PRODUCTION.						1938.	1939.
Butterfat—							
Weight	690,622 lb.	1,092,275 lb.
Value	£37,766	£68,850 10s. 10d.
Wool—							
Bales	699 bales	1,425 bales
Value	£9,176	£16,823 18s. 8d.
Sheep sold—							
Number	27,907	35,444
Value	£33,844	£28,873 10s.
Cattle sold—							
Number	922	3,121
Value	£4,547	£21,398 10s. 5d.
Pigs sold—							
Number	3,609	4,622
Value	£4,755	£6,927 3s. 4d.
Miscellaneous : Skins, &c.	£853	£5,018 6s. 6d.

The above figures relate to all lands controlled by the Board.

The gross expenditure for the year was : Material, stock &c., £459,197 ; wages, £316,603.

Following are brief notes on the blocks in the several land districts :—

NORTH AUCKLAND LAND DISTRICT.

Mangawai Block (1,856 Acres).

(Control : Commissioner of Crown Lands, North Auckland.)

Comprising part of the Mangawai Kauri-gum Reserve, originally rich in gum deposits, the block now offers reasonable prospects of successful development and farming. Of the 1,856 acres taken over by the Small Farms Board, 1,100 acres comprises swamp country and the balance easy slopes. Operations were commenced in July, 1935, primarily with the object of relieving unemployment.

A main drain 227 chains in length, 18 ft. to 20 ft. wide, and 8 ft. to 10 ft. deep, with the necessary subsidiary drains, has effectively dewatered the whole of the swamp, and at the same time has provided an outlet for water from several properties adjoining. The filling of the gum holes by man-power was not entirely satisfactory, and a bulldozer was brought into operation. This has proved both efficient and economical. It fills as well as consolidates the holes, and is capable of covering about an acre a day.

Four hundred and twenty-nine acres are in grass, 420 acres fallow, 250 acres cleared, and 566 acres remains in its natural state ; 1,440 chains of fencing has been erected, and 1,547 chains of drains dug.

The stock carried consists of 61 run cows and heifers and 128 steers.

A sand-drift along one and a half miles of the sea-front has caused some concern and considerably delayed the development operations on part of the area. Effective control measures have now been taken.

Number of men employed : Twenty-one.

Puriri Block (1,400 Acres).

(Control : Land-development Superintendent, Auckland.)

This is a block of undulating to hilly land of good quality in the Kaitia district on which the bush had been worked over by a timber company. The procedure adopted has been to fell the bush in the winter, burn and sow to permanent pasture in the following autumn, and proceed with fencing to permit of control of the pasture with sheep and cattle. Fencing material is readily obtainable from puriri growing on the block, and, in addition, a considerable number of logs have been converted to building-timber at a mill on the block. Logging of the unburnt timber has been put in hand, and this will be proceeded with. Small areas have been cultivated and sown in swedes.

During the year some 750 acres of land on which the bush had been previously felled and burned was sown in permanent pasture. Sixteen miles of fencing were erected, and the area lightly grazed with sheep and cattle. Logging of the unburnt timber was carried out on 100 acres. An additional 60 acres was felled and burnt, and this will be sown when weather conditions are favourable. A considerable number of logs were hauled from the bush and milled, the timber being stacked for use when required.

Pasture establishment is in the initial stages, and consolidation with stock and control of weed-growth will be necessary for a number of years before a good sole of grass can be expected. The success obtained to date indicates that good clean pastures can be established, and that the revenue from stock will increase rapidly each year. Eight hundred and seventy-two acres of bush has been felled, 502 acres underscrubbed, 452 acres cleared, and 893 acres grassed.

Stock carried: 1,335 sheep and 155 run cattle.

Kaitia Block (1,100 Acres).

(Control: Land-development Superintendent, Auckland.)

This block is in the Kaitia drainage area, and at the commencement of development was raw peat swamp with a fringe of good-quality silt land. Drainage was commenced in 1934, and later this permitted clearing, stumping, cultivation, and grassing of the drier silt land. Additional drainage is required before the peat lands can be successfully handled, and this is being provided by the construction of a dredged outlet drain from Waipapakauri, a grant having been secured for this work.

Dairying was commenced in 1936, and last year eight herds were milked, very good returns being obtained despite the unfavourable season.

The main work during the year was designed to improve the pastures on the dairy-farms by harrowing, stumping, and drainage-improvement. Some temporary pasture was sown on the peat land, and this will be consolidated with stock and gradually improved to permit the establishment of permanent pasture.

Owing to the nature of the peat in the swamp lands, progress with this land is necessarily slow, and thorough consolidation and decomposition must precede final grassing. When grassing of this land is completed, eleven dairy farms can be established.

Work completed to date includes the erection of eleven houses, twenty-nine sheds, 2,185 chains of fencing, the construction of 2,390 chains of drains, 684 chains of road, clearing 2,372 acres, and grassing 941 acres.

Stock carried: 380 head of dairy cattle and 66 pigs.

Number of workmen employed: Nineteen.

Maoriroa Farm Settlement (Newman's Block), (522 Acres).

(Control: Commissioner of Crown Lands, North Auckland.)

Situated four miles from Broadwood, in the Hokianga County, and acquired in September, 1933, from Messrs. Newman Bros. A camp was established under the supervision of the Public Works Department for the purpose of cleaning up the reverted pasture and completing development. Seven settlers were ultimately established, and they are now milking herds of their own. The pastures have not readily responded to top-dressing, with the result that progress has been slower than anticipated. However, it has been steady, and the estimated production for the 1938-39 season is 25,000 lb. butterfat. The question of increasing the size of the holdings, which are probably on the small side, is being investigated.

Taipuha Farm Settlement (668 Acres).

(Control: Commissioner of Crown Lands, North Auckland.)

Negotiations with Colonel McCarroll for the purchase of this block were opened in 1933, and finally completed in May, 1934. The situation is a mile and a half from Taipuha, near Waiapu, in the Otamatea County.

A camp of approximately forty men under the supervision of the Public Works Department was established for the purpose of cleaning up the existing pastures, erecting further subdivisional fencing, and generally completing development.

Provision was made for seven self-contained dairy-farms, and these were allotted to class "B" tenants—i.e., men not registered as unemployed, but whose settlement would, it was anticipated, tend to relieve unemployment. Each section includes an area of rich river-flat.

During the first season approximately 100 cows were milked, but this number has now been increased to 239, estimated to produce during the current season approximately 50,000 lb. butterfat.

The individual holdings are well maintained, and the success of the tenants is assured.

Mangate Farm Settlement (1,276 Acres).

(Control: Commissioner of Crown Lands, North Auckland.)

Situation, thirteen miles from Kaitia.

The Small Farms Board acquired this property from Messrs. Puriri Ltd., Long, and Brown in September, 1933. Nine settlers were established after development had been completed by the Chief Drainage Engineer, Auckland.

The year's activities were of a routine nature, but some additional stumping and clearing and a little cultivation were carried out by the settlers. Several new manure-sheds were erected.

Although the land is generally hilly and the pastures comparatively new, the returns to date have been satisfactory. It was anticipated that the production this year would be in the vicinity of 50,000 lb. butterfat, but it now transpires that the extraordinarily dry season will prevent this figure being reached. Although fairly well watered, the block suffered seriously during the autumn, and there was a consequent heavy drop in production. However, the settlers are of a steady type, and should soon recover their position.

Onekura Farm Settlement (1,032 Acres).

(Control : Commissioner of Crown Lands, North Auckland.)

This block was acquired for development in 1933, when it was nothing more than a rough grazing-run. To-day it is supporting twelve families and carrying a total of 321 cows, plus dry stock. Seven hundred acres are in clean to fairly clean top-dressed pastures.

Although the returns so far have been low, an improvement is becoming evident following regular top-dressing and careful culling. Most of the herds are under test this year, and from now on it should be possible to maintain and increase the herds without purchasing further stock.

The gravitation water-supply has proved most beneficial, and this year, owing to the ample water and the fact that the main pasture is *paspalum*, the settlement will not show the effects of the dry autumn to the same extent as other blocks relying on finer grasses.

Action is being taken to have the settlement valued, with a view to fixing the settlers' final mortgage liabilities.

Tutamoe Farm Settlement (974 Acres).

(Control : Commissioner of Crown Lands, North Auckland.)

The 974 acres comprising this settlement was acquired by the Board under the provisions of section 16 of the Small Farms (Relief of Unemployment) Act, 1932-33, owners in the district surrendering portions of their holdings for small-farm settlement as consideration for the money expended by the Crown on stumping and clearing the areas retained.

Tutamoe is in the deteriorated-land area, where the average yearly rainfall is 109 in., and, although the soil is of fair quality, wineberry and water fern make very rapid growth.

The six settlers are still working on wages—clearing, stumping, and logging their holdings.

The benefit of regular top-dressings is now becoming evident, and the estimated total returns this year from the 116 cows will exceed £1,000. The dairy season here is much later than any other district.

Otaneroa Farm Settlement (803 Acres).

(Control : Commissioner of Crown Lands, North Auckland.)

Crown land formerly held under lease by N. L. Gurr subject to a mortgage to the State Advances Superintendent, from whom the Small Farms Board acquired the leasehold interest in September, 1933. A camp was established under the supervision of the Public Works Department to hasten development.

At the date of acquisition, 500 acres were in bush and 300 acres in fair pastures.

Four settlers are now in possession, milking herds of about thirty cows each. As a result of the additional clearing, logging, and fencing carried out by the settlers during the year the carrying-capacity of all sections next season should be in excess of thirty-five cows. Butterfat sales for the current year will approximate 21,500 lb.

As soon as the topographical survey has been completed, arrangements will be made to assess the settlers' final mortgage charges, which will be based on valuation.

Mata North Farm Settlement (1,523 Acres).

(Control : Commissioner of Crown Lands, North Auckland.)

Camp labour was also employed on this block, which was purchased from private vendors in 1933. The situation is eight miles from Kohukohu, in the Hokianga County. The first six settlers were given possession in July, 1934, and the other four at later dates. Butterfat-production was low at the commencement, but the figures have gradually improved, and had the present season been normal would have exceeded 43,000 lb. for the year. As it is, the figure will be in the vicinity of 35,000 lb.

Although the land is not ideal for dairying, a reasonable living should eventually be possible from each holding. A programme of regrassing will be carried out as revenue permits, as it is desired to keep the capital expenditure at a minimum.

The block is carrying 281 dairy cows and 202 head of dry stock.

Oriwau Farm Settlement (Dr. Smith's Block), (1,089 Acres).

(Control : Commissioner of Crown Lands, North Auckland.)

A lease of this property was acquired in 1932, and eighteen settlers were established without any preliminary development or reconditioning work being undertaken. Experience proved that the holdings were too small, and opportunity has been taken to amend the subdivisional scheme whenever a settler has vacated. The number of holdings is now fifteen, and the remaining occupiers are rapidly improving their position.

The season's production will total 50,000 lb. butterfat, and it would have been at least 10,000 lb. greater in a normal season.

The year's work, apart from routine farming, included the clearing and resowing of deteriorated pastures, the erection of several manure-sheds, and the renovation of a number of cottages which are of the unsatisfactory Otahuhu type.

The block is carrying 319 dairy cows and about 100 head of dry stock.

The purchase of Dr. Smith's interests has been approved by the Board.

Raeata Farm Settlement (Mansbridge's Block), (378 Acres).

(Control : Commissioner of Crown Lands, North Auckland.)

Situated at Broadwood, Hokianga, and acquired by the Department of Agriculture on lease for five years from 1st August, 1932, with an option to purchase. The option was exercised, and a subdivisional scheme was arranged to provide three full-time farms.

A feature of this block is the excellent water-supply drawn from the river running through the centre of the property. Road access was one of the biggest difficulties with which the settlers were faced, but this has now been improved.

The returns for the past three years have shown a marked increase, and this season will reach 15,000 lb. There are 106 dairy cows and 50 head of dry stock on the block.

Waiotama Farm Settlement (Cossill's Block), (313 Acres).

(Control : Commissioner of Crown Lands, North Auckland.)

Situated on the Whangarei-Dargaville highway.

Prior to acquisition by the Crown, the property was partly farmed by one man. The Board has established five settlers, who have their sections fully developed and in good order. The herds are in first-class condition and are showing a steady increase in production, but it is apparent that an increase in the area of the holdings by the reduction of the number of settlers to four would be an advantage. The transfer of one of the tenants to another property will probably be arranged at the first opportunity.

Stock carried : 112 dairy cows and 36 head of dry stock.

Waiarua Farm Settlement (Raikes' Block), (272 Acres).

(Control : Commissioner of Crown Lands, North Auckland.)

There is a fair amount of stone on this particular property, and on that account development has been slow. Once cleared, the land is capable of good returns, and to-day 120 acres of top-dressed pasture is carrying ninety-two cows. Four settlers have been established, and all are doing well. One settler who is working to a programme of stoning, ploughing, and grassing 8 acres annually is making exceptional progress. There is an excellent water scheme, which serves the houses, sheds, and most of the paddocks.

This block is in the Bay of Islands County.

McCraith's Block (162 Acres).

(Control : Commissioner of Crown Lands, North Auckland.)

Two settlers occupy the 162 acres, which was originally leased from Mr. J. F. McCraith, Arapohue. The lease expired in December, 1937, and the area was subsequently purchased by the Small Farms Board.

During the past year an adequate water-supply has been installed, a pump-house erected, and good progress made with the cutting of rushes on the flats and the clearing of the steeper country.

One of the sections has reached full stock capacity, but another two years' work will be required to complete development of the other. Each is capable of carrying thirty-five milking-cows, plus dry stock. The general position here is very satisfactory, and the men should do well.

Rehutai Farm Settlement (Wilson's Block), (1,120 Acres).

(Control : Commissioner of Crown Lands, North Auckland.)

Twenty-one occupiers had been settled on this block when the administration was handed over to the Small Farms Board, but a rearrangement of some of the boundaries was made when two settlers abandoned their holdings, and the area of four sections increased. Two other holdings have been extended by the purchase of additional land.

The number of dairy cows on the block has increased from 72 in 1934 to 539 this season. In addition, there is 162 head of dry stock on the block.

The water-supply is ample for domestic as well as stock requirements.

The majority of the sections can be regarded as fully improved, and no further capital expenditure will be necessary either for stock or other improvements.

Te Maire Farm Settlement (Bassett's Block), (569 Acres).

(Control : Commissioner of Crown Lands, North Auckland.)

This block is in an exposed position, but nevertheless is coming in well, as is evidenced by the fact that during the last six years the stock capacity has increased from thirty to three hundred cows. The soil is dark sandy loam.

An increase in the size of the holdings is desirable, but not absolutely essential, as the average annual returns from each of the eleven sections is in the vicinity of £350.

During the year the settlers were principally engaged on general farm-maintenance work.

The block is situated in the Hobson County.

Whangarei Harbour Board Block (255 Acres).

(Control : Commissioner of Crown Lands, North Auckland.)

This block, consisting of reclaimed tidal mudflats, is held under lease from the Whangarei Harbour Board. The first response to grassing was disappointing, but the pastures are now generally in good order. Owing to the smallness of the sections and the proximity to Whangarei, the block is more suited to persons with other means to supplement their income.

Ninety-eight cows are being milked by the six occupiers, but the returns for the season were very poor owing to the fact that over a period of three months there was barely enough water for household purposes. Fortunately, two of the settlers are able to draw their supply from the local body's reticulation.

Stewart's Block (246 Acres).

(Control : Commissioner of Crown Lands, North Auckland.)

Exceptionally good results have been obtained by the three occupiers established on this property, which was acquired by the Board from Messrs C. M. and A. G. Stewart.

When taken over, 50 acres was in good pasture, 110 acres in worn-out pasture, and the balance in ratstail and natural state.

Ninety-four cows are being milked, and the season's production will be in the vicinity of 16,500 lb.

The settlers are most industrious, and, besides attending to routine work, have been engaged during the past twelve months on the erection of subdivisional fencing and the clearing and cultivation of additional areas, with a view to increasing the carrying-capacity.

Very little, if any, further capital money will be required for development work.

Parris' Block (302 Acres).

(Control : Commissioner of Crown Lands, North Auckland.)

Situation : twenty miles from the Pokeno Railway-station. When acquired, 60 acres was in rough pasture, and 242 acres in natural state. To-day the block is carrying ninety-six cows and twenty-seven head of dry stock on three subdivisions.

Since being given occupation the settlers have maintained a very steady rate of development, and except for the boundary fencing, which was erected by contract, have carried on without the assistance of outside labour. It can be said that the progress on two of the holdings has been outstanding. Electricity and good water-supplies are available.

Church Mission Block (633 Acres).

(Control : Commissioner of Crown Lands, North Auckland.)

This block was acquired in its natural state (hakea and tea-tree) by the Crown in 1934. Situated on the Awhitu Peninsula, approximately twenty-two miles from Waiuku.

Development was carried out with the co-operation of the Public Works Department, and has resulted in the establishment of eight settlers on fully equipped dairy-farms carrying a total of 282 dairy cows, 115 dry stock, and 117 pigs.

The occupiers were selected from the workmen employed on the scheme, and indications are that they will all be successful. Each man has been provided with an up-to-date cottage and shed, in accordance with modern standards, complete with milking-machines, electric power, and plentiful water-supply. Electricity has also been made available for domestic purposes.

A recreation and foreshore reserve has been set aside, while small unusable areas have been planted in trees.

About thirty pupils attend the school erected on the block.

PARTICULARS OF THE OPERATIONS OF THE SMALL FARMS BOARD IN THE NORTH AUCKLAND LAND DISTRICT.

Allotted Holdings : (a) Where Settlers' charges have been fixed.

Block.	Area.	Number of Holdings.	Rental Value.	Amount of Instalment Mortgage.	Amount of Current Account.	Stock Carried.						Estimated Total Annual Revenue.
						Dairy Cows.	Dry Stock.	Bulls.	Pigs.	Sheep.	Horses.	
	A. R. P.		£	£	£ s. d.							£
Church Mission ..	632 2 30	8	2,830	9,355	3,512 12 4	282	115	11	117	..	11	3,689
Maoriroa ..	522 0 25	7	850	6,245	2,475 1 11	158	82	8	77	..	24	1,691
Taipuha ..	668 0 20·7	7	2,805	8,095	606 5 0	239	124	9	43	..	18	3,581
Te Maire ..	569 1 38	11	1,400	7,250	2,707 6 0	293	76	11	22	..	18	3,581
Waiaruhe ..	272 1 20	4	1,100	2,575	1,108 15 10	92	20	4	6	..	8	1,385
Rehutai ..	1,119 2 30	19	3,435	10,840	5,788 0 8	539	162	12	65	33	29	6,662
Parris' ..	302 1 33	3	745	2,020	1,468 13 3	96	27	3	19	..	7	1,512
Stewart's ..	246 0 01	3	1,030	2,370	658 18 6	94	38	3	27	..	6	1,215
Individual holdings (not in blocks)	2,476 3 22	31	6,926	13,793	6,484 6 0	665	345	26	84	208	43	8,992
Totals ..	6,809 3 19·7	93	21,121	62,543	24,809 19 6	2,458	989	87	460	241	164	32,308

Allotted Holdings : (b) Where Settlers' charges have not been fixed.

Block.	Area.	Number of Holdings.	Stock Carried.						Estimated Total Annual Revenue.
			Dairy Cows.	Dry Stock.	Bulls.	Pigs.	Sheep.	Horses.	
	A. R. P.								£
Waiotama ..	313 2 36	5	112	36	4	7	..	4	1,269
Mangatete ..	1,276 0 0	9	286	175	10	48	95	23	3,777
Ractea ..	378 0 16	3	106	41	4	25	..	5	977
Mata North ..	1,523 1 06	10	281	202	17	77	416	31	3,210
McCraith's ..	162 0 0	2	66	22	2	2	..	4	764
Onckura ..	1,032 3 09	12	321	114	13	171	7	23	3,206
Otaneroa ..	803 0 38	4	118	28	7	12	141	6	1,472
Oriwau ..	1,089 2 30	13	319	94	14	133	94	31	4,164
Tutamoc ..	974 0 0	9	116	45	6	16	..	5	1,009
Whangarei Harbour Board ..	255 1 20	6	91	31	2	33	..	4	985
Individual holdings (not in blocks)	1,126 1 27	21	275	111	13	5	..	6	3,076
Totals ..	8,934 2 22	94	2,091	899	92	529	753	142	23,909

Blocks in Course of Development in the North Auckland Land District.

Block.	Area.	Number of Men employed.	Stock Carried.				
			Sheep.	Dairy Cattle.	Run Cattle.	Horses.	Pigs.
	Acres.						
Mangawai ..	1,856	21	186	2	..
Puriri ..	1,400	34	1,335	2	155	4	..
Kaitaia ..	1,100	19	..	380	..	8	66
Totals ..	4,356	74	1,335	382	341	14	66

Sales.

Block.	Butterfat.		Wool.		Cattle.		Sheep.		Pigs.	
	Pounds.	Value.	Pounds.	Value.	Number.	Value.	Number.	Value.	Number.	Value.
		£ s. d.		£ s. d.		£		£		£
Mangawai
Puriri	6,506	195 4 8	266	235
Kaitaia ..	50,286	3,435 8 9	63	264	78	203
Totals ..	50,286	3,435 8 9	6,506	195 4 8	63	264	266	235	78	203

AUCKLAND LAND DISTRICT.

Onepu Block (690 Acres).

(Control : Commissioner of Crown Lands, Auckland.)

This block comprises part of the once-despised "Black Desert," and furnishes a striking example of the efficacy of modern land-development methods. The actual development was carried out by the Chief Drainage Engineer, Auckland, who handed over the ten sections to the Small Farms Board ready for settlement. The situation is about four miles from the Te Teko Post-office and School on the Rotorua-Whakatane main highway. The soil is pumiceous mixed with Tarawera ash, and responds well to top-dressing. The settlers have been making steady progress, but the dry season and autumn affected the pastures very severely, and assistance in the way of grazing and hay has been necessary.

The block is carrying 360 dairy cows.

Tarawera Block (932 Acres).

(Control : Commissioner of Crown Lands, Auckland.)

Situated on the main Rotorua-Whakatane Road about four miles from the Te Teko Post-office, adjoining the Onepu Block referred to above.

This is another case where the development was carried out by the Chief Drainage Engineer prior to the establishment of nine settlers. One unoccupied section is being used by the Land Development Superintendent, Auckland, in connection with the development of other lands in the locality.

The tenants for the sections were selected from the workers employed on the block, and are aware of the necessity for regular top-dressing of the pastures and careful management of the stock.

Provision was made for the carrying of 340 dairy cows for this season, and this figure will gradually increase as the pastures consolidate. The block can be regarded as a successful experiment in development and settlement.

Wainui South Block (782 Acres).

(Control : Commissioner of Crown Lands, Auckland.)

This unit comprises unimproved Education endowment land situated in the vicinity of the Apata Station about twelve miles from Tauranga, on the Tauranga-Waihi main highway.

The Small Farms Board took over in October, 1933, and, with the co-operation of the Public Works Department, erected the necessary buildings and cultivated and grassed about 50 acres on each section prior to establishing the seven settlers. Further development work was subsequently carried out with the settlers working as a gang under the supervision of the Field Inspector and the Public Works Department. The areas of the sections range from 68 acres to 168 acres.

To-day the block is carrying about 290 cows and heifers in addition to dry stock, horses, and pigs, and it must be remembered the carrying-capacity was affected by the dry autumn.

Any further grassing should be done out of revenue, and the carrying-capacity of each section should steadily improve with proper pasture and stock management.

Part Wharere Block (233 Acres).

(Control : Commissioner of Crown Lands, Auckland.)

Five settlers have been allotted part of a block of Crown land lying between the Kaikokopu and Pongakawa Rivers about ten miles from Te Puke, which was developed for the Small Farms Board by the Chief Drainage Engineer, Auckland. The balance of the block has still to be released for settlement. The settlers suffered a set-back in the early part of the season as a result of the flooding of their holdings, but the dry autumn which adversely affected other districts actually proved a benefit to the Wharere pastures.

The dredging operations on the adjoining country will ultimately improve the drainage systems on the established holdings, which should gradually increase their carrying-capacities.

The sections are at present carrying 149 cows.

Murupara Block (1,364 Acres).

(Control : Commissioner of Crown Lands, Auckland.)

This block of 1,364 acres of national-endowment land, which is situated about forty miles from Rotorua, is reached from the main Rotorua-Te Whaiti Road, and was developed by the Chief Drainage Engineer into fifteen farms of from 44 acres to 114 acres. It was handed over for settlement at the beginning of the 1936-37 season, and thirteen of the sections are now occupied by married settlers with their families. Milking-machines have been installed on several of the sections.

A few of the present settlers, who went into occupation at the beginning of the 1938-39 season, are still on probation receiving a monthly allowance, but will be permanently established at an early date. Some of the earlier settlers have been given partial management of their affairs, and although prospects were excellent at the beginning of the season the unusually dry conditions of the late summer and autumn have affected dairy returns adversely. The season has, however, shown the necessity for the conservation of hay in the good seasons to tide over such a spell as experienced in the 1938-39 season, and for the growing of lucerne and root-crops.

Broadlands Block (865 Acres).

(Control : Commissioner of Crown Lands, Auckland.)

The 865 acres known as Broadlands, lying thirty-two miles south of Rotorua, and obtaining its access from the Rotorua-Taupo main road, was a gift from Mr. E. Earle Vaile to the Crown to assist in the settlement of the unemployed on the land, and has justified its development, which was carried out by the Chief Drainage Engineer.

About 830 acres have been subdivided into eight sections ranging from 56 acres to 156 acres, and eight settlers are in occupation. All the settlers are doing well, and have been given partial control of their affairs.

Lucerne patches have been put down on each section, and the settlers should be able to gradually bring the sections up to their maximum carrying-capacity out of revenue.

Three hundred and thirty-eight cows are being milked.

Park's Block (380 Acres).

(Control : Commissioner of Crown Lands, Auckland.)

Puahue (Park's) Block is a block of 380 acres between eight and nine miles from Te Awamutu, and was purchased in March, 1934, from Mr. W. G. Park. The area was divided into six sections of an average size of 44 acres, and one larger one which was subsequently disposed of for cash.

The six "B" class settlers are firmly established, five being original selectors, and they should have no difficulty in meeting their commitments.

Blackshaw's Block (239 Acres).

(Control : Commissioner of Crown Lands, Auckland.)

This block of 236 acres situated about four miles and a half from the Town of Cambridge was acquired from the Public Trustee in the beginning of 1934. It has been developed by the Chief Drainage Engineer, and two settlers have been permanently established on sections of 39 acres and 45 acres. Three other farmers are occupying sections of 50 acres each on probation pending completion of the clearing-up of part of their holdings, which work was retarded by two wet summers. The work will be completed shortly, and the settlers can then be permanently settled. Milking-machines have been installed, and the men are progressing steadily with the development of their sections to their full capacity. The conversion of this area of waste land to a good producing area adds a decided asset to a rich dairying district.

Whangamarino Island Block (1,093 Acres).

(Control : Commissioner of Crown Lands, Auckland.)

The Whangamarino Island Block, situated in the Whangamarino swamp area not far from the Township of Mercer, and connected by metalled road with Te Kauwhata Township sixteen miles away, was one of the first blocks of vacant Crown land recommended for development by a special advisory committee in 1930 and the first block to be developed for the purposes of the Small Farms Board.

Its development was completed early in 1934, and this total area of 842 acres was then subdivided into nine sections of up to 160 acres in area and allotted to applicants for small farms under the provisions of the Small Farms (Relief of Unemployment) Act, 1932-33.

In the hands of these settlers the block is proving eminently suitable for dairying, and, whilst the results which are being obtained are highly satisfactory, further progress and production can safely be anticipated as the land and pastures mature and closer fencing into smaller paddocks and also planting trees for shelter are carried out in accordance with the recognized requirements of this particular line of farming.

The estimated revenue for the 1938-39 season ranges from 7,000 lb. to 16,250 lb. butterfat per section. The most productive holding will return in the vicinity of £1,200 for the year.

Mill Road Block (147 Acres).

(Control : Commissioner of Crown Lands, Auckland.)

This block, which is situated only three to four miles from Paeroa, comprises 147 acres, part of which had been handed back to the Crown, the balance being purchased from the Natives. It was in a very dirty abandoned state when development work was commenced on 100 acres towards the end of 1933. This 100 acres is occupied by two men who have been employed on the development work since the inception, and each is milking thirty cows besides running a considerable number of pigs. The balance of the block, 47 acres, has lately been cleared by the Public Works Department, and after a rearrangement of the boundaries the two men will have farms of roughly 70 acres, each carrying forty cows and dry stock and pigs.

Although the cost of clearing the block has been high owing to the heavy draining required and a succession of unfavourable seasons, an eyesore has been converted into a productive block with a good prospective value.

Edgecumbe Block (6,399 Acres).

(Control : Land-development Superintendent, Auckland.)

Development was commenced in 1937 on the Tarawera No. 2 and the Edgecumbe Blocks. These were amalgamated in 1938, the Orini Block and an abandoned small-farm section being added later.

The Orini Subdivision comprises 350 acres of good-quality but low-lying consolidated swamp land, while the balance is flat to undulating fern and manuka land covered with Tarawera ash, in its natural state presenting a very unpromising aspect.

The major portion of this ash land is surface-sown following clearing and burning of the surface growth. Some heavy stumping and cultivation were necessary on a portion, and a further area of very wet swamp had to be drained. A feature of the development of this land is the rapidity with which extensive areas can be handled, and it is anticipated that the coming year will see the completion of the major portion of the grassing programme.

The Orini Subdivision will be used as a change area, development at this stage being confined to draining, fencing, and stocking the reverted pastures.

The season's programme entailed the clearing, burning, and sowing of 1,500 acres in permanent pasture, and this work was well in hand at the close of the year. A heavy fencing programme is in hand, and on the Orini Subdivision the draining and fencing programme was pushed forward to a point nearing completion. Top-dressing of all pastures, being in the main hand-work, absorbed a considerable amount of labour.

Although permanent pasture establishment on this area is fairly rapid and dairying can be engaged in with success at an early pasture age, past experience in handling this class of land has shown that better results can be obtained by farming the land with dry stock until the red clover, which is predominant in the pastures in the early stages, is replaced with rye and white clover.

This land is exceptionally healthy for stock, and on completion of development can undoubtedly be successfully settled in reasonably sized dairy-farms.

A good water-supply can be obtained from two convenient sources, ample fall being available to permit of a gravity scheme.

Fifty men are employed.

Stock carried includes 97 sheep, 187 dairy cattle, and 629 run cattle.

Work completed to date includes the erection of one dwelling and fifty-four other buildings, 930 chains of fencing, construction of 483 chains of drains, 2,225 acres cleared and burned, and 1,264 acres sown in grass.

Wharere Farm Settlement (2,590 Acres).

(Control : Land-development Superintendent, Auckland.)

Development was commenced in 1933 on 960 acres of abandoned flax lease, a further 1,630 acres of similar land being included in 1938. Both areas are low-lying peat lands in the Waihi Swamp-drainage District, the peat varying in depth from 3 ft. to 8 ft.

On the first portion complete development as dairying-land is being undertaken, an electric pump being installed to maintain sufficient drainage for the lowest portions. On this portion six dairy-farms have been established, five of these being handed over to the control of the Commissioner of Crown Lands. Bullocks and sheep are being grazed on the balance of the area, and this grazing with dry stock will be continued until the land is sufficiently drained and consolidated to enable final grassing to be safely and economically proceeded with.

The main activities during the year have been the drainage and fencing of the area acquired this year in preparation for consolidation with stock, and the maintenance of drains on the previously drained areas. In addition to the schedule of work listed below, a grant for roading was expended, 190 chains of road being raised above flood-level by dredging. This road will also act as a protection from flooding.

Bullocks fatten exceptionally well on the established pastures. The present programme provides for the improvement and consolidation of the pastures already sown, bullocks being grazed on the areas carrying rough swamp growth and brought in on to the pasture lands for finishing for marketing. As it will be necessary to continue this method of farming for a number of years, this block can be used as a base for the development of suitable areas of vacant Crown land in the district. This procedure will economically effect a steady improvement in the land itself and eventually fit it for final grassing and settlement.

Thirty men are employed.

Stock carried : 579 sheep, 74 dairy cattle, and 757 run cattle.

Work completed includes the erection of seven dwellings and twenty-one outbuildings, 5,514 chains fencing erected, 2,424 chains drains constructed, 1,373 chains drains deepened, 507 chains roads formed, 869 acres cleared, 229 acres stumped, 860 acres grassed, and 2,217 acres top-dressed.

Appleton's Section (56 Acres).

(Control : Land-development Superintendent, Auckland.)

This section was part of the original Oneputi Small-farm Scheme, being a fully equipped dairy-farm. On the death of the occupier during the year the Board decided to recondition the pastures and effect minor improvements before again settling the area.

A stand of lucerne was established during the year, and a heavy growth of ragwort on portion of the area was treated with sodium. The fences were repaired, buildings painted, the water-supply extended, and the pastures top-dressed.

A herd of twenty-five heifers was purchased, and dairying on wages will be commenced next season. It is anticipated that at the end of two years the holding will be in good heart and can be permanently settled.

Lucerne established, 5 acres; ragwort treated, 15 acres; pastures top-dressed, 56 acres; hay saved, 12 tons. Fences repaired and buildings painted.

Tokoroa Block (5,400 Acres).

(Control: Land-development Superintendent, Auckland.)

This block is an Education endowment situated nineteen miles south of Putaruru on the Putaruru-Taupo main highway. Development was commenced under the small-farms scheme in April. The land is flat to undulating, growing stunted manuka, manaoa, tussock, and fern. Although this land is in the "sick" area, it is confidently expected that this can be overcome by the use of cobalt top-dressing.

Pasture-establishment will probably be somewhat slower than on other pumice areas in the district, as the land has little natural humus and the climate is fairly severe.

The Putaruru-Mokai Timber Railway runs past the block and a siding and a goods-shed at a convenient point on this line was the first major work.

A cottage was erected for the overseer and a single-men's camp was established. Clearing, tractor cultivation, and grassing was put in hand immediately, and at the end of the year 298 acres had been sown in grass and 60 acres in swedes.

A small herd of breeding-heifers was purchased late in the year and is being wintered on the area.

Posts are obtained from an area of bush in the district, and this has permitted fencing to be kept up to schedule.

Development is as yet in the initial stages and it is too early to accurately forecast the measure of success which may be expected. Situated, as it is, on the outskirts of a progressive dairying district, and with all the necessary facilities close at hand, the decision to develop and settle this large area of virgin land could not be delayed.

Twenty-five men are employed.

Pueroa Block (12,000 Acres).

(Control: Land-development Superintendent, Auckland.)

Four large areas of virgin undulating to hilly pumice Crown land on the Rotorua-Taupo Road were amalgamated under this title, and development was commenced during the year. A further 120 acres of partly developed freehold land conveniently situated was purchased, and the cottage on this area provides accommodation for the overseer.

All this land is well served with good road access and lends itself readily to cultivation with tractors and three- or four-furrow ploughs; consequently, rapid progress in pasture establishment is possible.

The land is healthy for stock, and stock purchased and depastured on the freehold area have done exceptionally well.

Three camps were established, together with the necessary store-sheds, and three tractors with cultivation equipment were put to work following the clearing of the scrub by hand.

As instancing the rapid progress possible in this type of land, 1,590 acres was cleared during the portion of the year worked, and 510 acres were cultivated and ready for sowing.

Other works carried out were draining on a good-quality swamp area, fencing, and road-formation.

A comprehensive topographical survey was completed of this block during the year, and all available sources of water-supply thoroughly investigated.

Development is as yet only in its initial stages, but the success attending the development of similar land in this district augurs well for the future of the conveniently placed areas forming this block.

Pasture-establishment is rapid, and established pastures stand up very well to dry weather conditions.

Further stock purchases will be necessary in the coming year.

Eighty-three men are employed.

Waikite Block (5,400 Acres).

(Control: Land-development Superintendent, Auckland.)

This area lies immediately east of Ngakuru, a formed road through this giving access to the block. Negotiations are in hand to have this road continued through the block, when through access will be possible. Development in this area was held up pending the evacuation of Native interests from areas aggregating 1,200 acres in the block. At the close of the year negotiations were sufficiently far advanced to enable development to proceed.

The land is flat to undulating and lends itself to ready cultivation with tractor ploughs.

A single-men's camp was established late in the year and work concentrated on forming sufficient roading to permit of access to this camp and clearing for future cultivation.

A comprehensive topographical survey was in hand on this and adjoining areas of Crown land, and this will permit of a complete scheme of roading subdivision and water-supply being drawn up.

When plant is available rapid progress will be possible, and good pasture-establishment is anticipated. It is anticipated that it will, if desired, be possible to extend development into adjoining areas of Crown land aggregating approximately 5,000 acres.

Whirinaki Block (1,200 Acres).

(Control : Land-development Superintendent, Auckland.)

The Small Farms Board approved of the development of this area in 1938 subject to satisfactory arrangements being finalized for access roading. A commencement was made on this roading by the Public Works Department at the end of the year, and sufficient roading has now been completed to enable development to proceed.

Murupara Block.

(Control : Land-development Superintendent, Auckland.)

One section of lighter land was withheld from settlement on this block, and during the year this land was top-dressed and grazed with stock. It was intended to commence dairying in the coming year, but following the exceptionally dry summer experienced it was decided to make the area available to the small-farm settlers for grazing through the winter. Fifty-six tons of hay saved was also disposed of to these settlers.

It is anticipated that a settler will be established at the commencement of the 1940-41 season.

Pouarua Block (10,476 Acres).

(Control : Land-development Superintendent, Auckland.)

This is an area on the Hauraki Plains comprised mainly of deep peat lands on which drainage and roading had been commenced prior to its being taken over by the Small Farms Board in 1937. Some 1,100 acres of this block is sufficiently consolidated to carry stock.

Draining and consolidation with stock will be gradually extended over the whole of the area, using the consolidated land as a base.

An average of eighty men has been employed throughout the year on drain-construction work, ballasting peat roads, and in cleaning, burning, and sowing grass. Fencing and the provision of water were undertaken in order to permit stocking of the pastures.

As indicated in the original report, development is necessarily slow, as extensive drainage and consolidation must precede grassing. Satisfactory progress has been made during the year, and this indicates that if the programme is persisted in the whole area can be successfully handled over a period of years and eventually converted from waste peat swamp to good dairying-land. (See also reference in Hauraki Plains swamp-drainage report, Waitakaruru-Torehape district.)

Work completed to date includes the erection of 528 chains of fencing, 5,734 chains drains constructed, 4,610 chains drains cleaned, 53,800 cubic yards roads ballasted, 1,280 acres cleared and burned, and 780 acres grassed.

Kerepehi Extension (1,100 Acres).

(Control : Land-development Superintendent, Auckland.)

This block is portion of the Hauraki Plains adjacent to the Pouarua Block. A considerable amount of drainage-improvement had been effected and a pumping plant installed for this and adjoining lands prior to the purchase by the Small Farms Board. The land is partly consolidated by drainage, and final consolidation and grassing will be fairly rapid when an efficient system of drainage has been provided.

Draining, clearing, and grassing have been proceeded with throughout the year. A water-supply was installed, and fencing and stocking of the pastures proceeded with.

It is anticipated that it will be possible to report a decided improvement after a period of heavy stocking with dry stock, and the eventual establishment of good dairying-pasture is assured.

Eight men are employed.

Hoe-o-Tainui Block (1,472 Acres).

(Control : Land-development Superintendent, Auckland.)

This block is situated on the Morrinsville-Ohinemuri Road and work was commenced in 1935. The land comprises easy hill country with some peat swamp of varying depths. The original intention was to develop some 700 acres of easily worked land, but as this was brought in activities were extended over a larger area, and to date some 800 acres of hill land have been grassed and 200 acres of swamp land improved and sown mainly in temporary pasture.

A satisfactory water-supply has been installed, and during last season seven sections were dairied on, and it is anticipated that during the coming season the remaining five sections will be fully equipped for dairying.

Some work will still remain to be done on the peat swamp before final grassing, as a certain amount of consolidation is necessary before this can be accomplished.

A considerable amount of fencing and draining was carried out. Further areas were cleared and sown to crops and grass. The pastures were top-dressed, and hay saved on the dairy-farms.

Arrangements were made for a grant for the formation and metalling of an access road, and this work will be completed in the coming year.

Good returns have been recorded from the dairy-farms despite the dry season.

Some stocking with dry stock and careful attention to the newer pastures will be necessary for a year or two, but it is now certain that when these portions have been properly consolidated this area of once unpromising-looking country will have been converted to successful dairying-land. The stock carried includes 484 sheep, 579 head of dairy cattle, and 30 run cattle.

Arohena Block (3,983 Acres).

(Control : Superintendent of Land-development, Te Kuiti.)

Anderson's.—Operation has been limited to the front portion (approximately 180 acres) and no bush has been felled. Most of the present area has been ploughed and cropped. The original experimental ewe flock has been carried and there are now no signs of sickness among the sheep. Ewes bred on the place are being taken into the flock.

The grassing of the present area is practically complete.

Arohena Central.—These sections were formerly badly ragwort infested, but the weed is now completely controlled by sheep. Approximately 80 acres have been stumped and ploughed. Swede crops have been grown to carry through the large number of sheep which have been necessary to control the ragwort.

A new wool-shed, dip, and yards have been erected to serve the Arohena sections in this locality.

Approximately 50 per cent. of the area of the central sections is in grass.

Scherer's.—Operations were commenced last spring, and an area of about 40 acres has been stumped and logged and second growth is being cleared. The boundary-fences have been put in order, and approximately 20 acres sown in swedes.

This section is reputed to be healthy, and it is expected that it will prove very attractive when the work is completed.

Prendergast's.—The road fences have been renewed and the grassed area secured. Approximately 20 acres of swedes have been sown, and the house has been repaired.

Stephen's.—Approximately 50 acres have been cleared and ploughed and are in crop. This area has been fenced, and the boundary-fences have been repaired.

Most of this section will eventually be ploughed. About 80 acres of light scrub has been cut.

Broome's, Thorley's, Flanagan's, Spence's, Dormer's, and Flett's.—These are all new sections on which work has not yet been commenced.

The total live-stock carried on the Arohena sections is—Sheep, 4,445; run cattle, 186; dairy cattle, 7; horses, 13.

Bain's Block (169 Acres).

(Control : Superintendent of Land-development, Te Kuiti.)

This block is situated in the Mangaorongo Survey District, Waitomo County. In 1934 it became evident that the occupier, who had been assisted under the Discharged Soldiers Settlement Act, could not carry on, and the Department took over and proceeded with development under the Unemployment Board's Relief Scheme No. 4c. When this was terminated in May, 1936, the property was transferred to the control of the Superintendent of Land-development, Te Kuiti, and he has made good progress with the reconditioning work, 80 per cent. of which has been completed.

Stock carried included 260 sheep, 24 run cattle, 6 dairy cattle, and 3 horses.

Five men are employed.

Benton's Block (989 Acres).

(Control : Superintendent of Land-development, Te Kuiti.)

This section is approximately 1,500 ft. above sea-level and is in a very heavy rainfall district (about 100 in. per annum). It was badly reverted, and the main work has been clearing second growth, fencing, and top-dressing, and very satisfactory results have been obtained.

An area of approximately 120 acres of wineberry remains to be felled and grassed on this section. It has been decided to include in this block another 200 acres of Neilson's abandoned section opposite, on which no work has yet been commenced.

The house has been renovated, and other work completed comprises clearing of patches of wineberry over about 300 acres and the regassing of the patches on this area: 196 chains of fencing has been repaired and 18 chains of new fences erected.

The ewe flock now breeds its own requirements and has a surplus for sale.

Stock carried : Sheep, 896; run cattle, 71; dairy cattle, 5; horses, 2.

Burns' Block (139 Acres).

(Control : Superintendent of Land-development, Te Kuiti.)

This was a completely reverted bush section badly infested with ragwort and in the heavy rainfall area (1,500 ft. above sea-level).

Approximately 90 acres have been stumped, ploughed, cropped, and sown down in grass, of which about 40 acres has been renewed.

All fences have been renewed, and the work is approximately 70 per cent. complete.

Stock carried : Sheep, 310; run cattle, 25; dairy cattle, 4; horses, 3.

Henderson's (785 Acres).

(Control : Superintendent of Land-development, Te Kuiti.)

There was approximately 60 acres of fair grass on this section, the balance being badly infested with ragwort. Approximately a third of the area (260 acres) is swamp land which has been drained.

A considerable amount of work has been completed, including 454 chains drains, 760 chains of fencing (new and repaired), 638 acres cleared, and 265 acres cultivated. New pasture, 135 acres, and old pasture being grazed off, 280 acres.

One new cottage has been erected and the original homestead renovated. Two water-supplies have been installed, and a new set of sheep and cattle yards and a dip constructed. Approximately one mile of road has been formed and metalled.

Development is about 60 per cent. completed, and the remaining work will be draining and clearing swamps, fencing, and regrassing.

Stock carried : Sheep, 1,619 ; run cattle, 199 ; horses, 12.

Twenty-six men are employed.

Hill's Block (358 Acres).

(Control : Superintendent of Land-development, Te Kuiti.)

This section was badly reverted and ragwort infested. There are about 60 acres of swamp land, the balance being easy to hilly. A herd of thirty cows is being milked on the swamp land.

The improvements effected comprise clearing, 330 acres ; cultivation, 113 acres ; new pasture, 142 acres ; old pasture renovated, 168 acres ; 730 chains of fencing erected and repaired ; and 30 chains drains dug. One small-farm-type cottage was erected, and this has been added to and the original homestead has been repaired. One water-supply has been installed, and a new set of sheep yards and dip constructed. The work on this section is approximately 75 per cent. completed.

Stock carried : Sheep, 722 ; run cattle, 57 ; dairy cattle, 48 ; horses, 7.

This block is situated near Otorohanga, and was one of the first acquired by the Small Farms Board.

Piha Block (26 Acres).

(Control : Superintendent of Land-development, Te Kuiti.)

This was an unimproved Crown section conveniently situated to Te Kuiti, and it was decided that it should be taken over by the Small Farms Board, grassed, and used as a holding-paddock for travelling stock. A set of sheep and cattle yards has been erected, and the section subdivided into five paddocks.

Cruickshank's (361 Acres).

(Control : Superintendent of Land-development, Te Kuiti.)

There is approximately 160 acres of bush on steep faces which is being reserved. The balance of the land has been cleared and grassed after cultivation. The fences have all been renewed, a house built and added to, and a set of sheep yards and a dip erected. Other work consists of 80 chains shelter-belts, two water-supplies, and 400 chains fencing.

Approximately 20 acres of grassland require to be renewed, and this will complete the work on this section.

Stock carried : Sheep, 1,024 ; run cattle, 69 ; dairy cattle, 4 ; horse, 1.

Ellicott's Block (2,900 Acres).

(Control : Superintendent of Land-development, Te Kuiti.)

Efforts by the mortgagee, the State Advances Corporation, to find a purchaser for the above property, which is situated on the Te Awamutu - Arapuni main highway, were unsuccessful, and in 1933 it was acquired by the Board with a view to development prior to settlement.

Except for about 60 acres fronting the Arapuni Road, the whole area was either totally reverted or in its natural state. Altogether, 1,660 acres has been cleared and 1,226 acres cultivated. Of this latter area, 1,000 acres has been sown down in new grass. Thirty miles of fencing has been erected, two sets of sheep-yards and one set of cattle-yards constructed, twelve houses and four cow-sheds built, 168 chains drains dug, and two water-supplies installed.

Work, which is providing employment for thirty-eight men, is about 60 per cent. completed.

The stock carried comprises 3,208 sheep, 606 run cattle, 92 dairy cattle, 20 horses, and 12 pigs.

Foss's Block (438 Acres).

(Control : Superintendent of Land-development, Te Kuiti.)

This section was completely reverted and badly ragwort infested, and a considerable portion of the area was covered with short fern and heath. Two hundred and sixty-four acres have now been cultivated and 212 acres of this sown in grass. Five miles of new fencing have been erected, also a new dwelling and a set of sheep yards and dip. It was found necessary to bore 350 ft. to obtain a satisfactory water-supply. The work is approximately 60 per cent. completed.

Stock carried : Sheep, 583 ; run cattle, 78 ; dairy cattle, 1 ; horses, 1.

Kairangi Block (1,946 Acres).

(Control : Superintendent of Land-development, Te Kuiti.)

This is one of the blocks taken over from the Waikato Land Settlement Society. There are fourteen houses erected, and two have been renovated ; 1,208 acres have been cleared, 622 acres cultivated, 1,231 acres new pasture sown, and 300 acres of old grass reconditioned. Other work completed consists of 120 chains drains and 30½ miles fences erected and 1½ miles repaired. Thirty chains of internal roads have been formed. The work is approximately 75 per cent. completed.

Stock carried : Sheep, 4,607 ; run cattle, 555 ; dairy cattle, 18 ; horses, 14.

Twenty-six men are employed.

Kaitaringa (1,339 Acres).

(Control : Superintendent of Land-development, Te Kuiti.)

This was a block of unimproved Crown land to which road access was necessary, and this has been provided by a road running through the centre of the block. About half of the area was manuka covered and the remainder in bush, part on very steep sidings. The Kaitaringa Stream runs through the block and has been cleaned out.

The work carried out includes 391 acres cleared, 92 acres cultivated, 307 acres new grass sown, 335 chains of drains dug, 394 chains of fencing erected, and one set of sheep-yards constructed.

Work was commenced early in the year and it is about 25 per cent. completed.

Stock carried : Sheep, 451 ; run cattle, 44 ; horses, 4.

Karakariki (2,043 Acres).

(Control : Superintendent of Land-development, Te Kuiti.)

This block was also taken over from the Waikato Land Settlement Society.

Twelve houses were erected and two repaired. Nine hundred and thirty acres have been cultivated, 873 acres sown in new grass, 60 acres of old pasture have been reconditioned, 419 chains of drains dug, and 1,432 chains new fencing have been erected and 244 chains fences repaired. One set of sheep-yards and fourteen cow sheds and yards have been constructed. The work is approximately 50 per cent. completed.

Stock carried : Sheep, 1,965 ; run cattle, 234 ; dairy cattle, 30 ; horses, 14.

Thirty-six men are employed.

Langdon's (456 Acres).

(Control : Superintendent of Land-development, Te Kuiti.)

This was an abandoned section very badly ragwort infested, almost completely reverted, and, in addition, was infested with rabbits. Work has been proceeding for two years, and so far 304 acres has been cleared, 206 acres cultivated, and 178 acres sown in new grass. New fencing erected totals 204 chains, and 55 chains have been repaired. One new house has been constructed, the cow shed and yards renovated, and one set of sheep-yards erected. One water-supply (bore and ram) has been installed. The work is approximately 65 per cent. completed.

Stock carried : Sheep, 546 ; run cattle, 79 ; dairy cattle, 6 ; horses, 5.

Larsen's Block (279 Acres).

(Control : Superintendent of Land-development, Te Kuiti.)

This was a badly ragwort- and rabbit-infested abandoned section on which work has been proceeding for three years. Three houses, three cow sheds and yards, and 1 set of sheep-yards have been constructed. Clearing 270 acres, cultivating 166 acres, new grass sown 128 acres, old grass renovated 35 acres, and 670 chains new fences have been erected, while 70 chains of old fences have been repaired. One water-supply has been installed. Some 120 chains of shelter-belts have been planted. The work is about 90 per cent. completed.

Stock carried : Sheep, 1,298 ; run cattle, 45 ; dairy cattle, 7 ; horses, 7.

Lee's Block (243 Acres).

(Control : Superintendent of Land-development, Te Kuiti.)

This is portion of a large section, and was purchased from Mr. J. W. Lee, who retained the original homestead area. An access road of 90 chains has been formed and metalled. It is one of the original blocks, and work has been proceeding for the past four years. Approximately one-third of the area was in cut-over kahikatea swamp and the balance practically all in manuka, fern, and gorse.

Four houses, four cow sheds and yards, and one set of sheep-yards have been erected, one electrically driven water-supply has been installed, 229 acres cleared, 78 acres cultivated, 156 acres new grass sown, and 14 acres old grass reconditioned ; 855 chains of new fences have been erected and 22 chains of old fencing renovated ; 339 chains of drains have been dug, and 40 chains of shelter-belts have been planted. The work is 80 per cent. completed.

Stock carried : Sheep, 410 ; dairy cattle, 139 ; horses, 3.

Maihihi (443 Acres).

(Control : Superintendent of Land-development, Te Kuiti.)

This consists of three sections, on one of which a small-farm settler had been established. The country had become badly infested with ragwort and rabbits.

Two houses have been renovated, one set of sheep yards and dip erected, 73 acres cleared, 120 acres cultivated, and 104 acres sown in new grass. New fencing, 132 chains, have been completed, and 263 chains repaired. Work has been proceeding for over two years and is approximately 50 per cent. completed.

Stock have been carried intermittently for ragwort-control, up to 800 wethers being on the block at a time. Stock at present carried : Dairy cows, twenty-seven ; horses, three.

Merrin's Block (312 Acres).

(Control : Superintendent of Land-development, Te Kuiti.)

This was an abandoned section badly reverted and ragwort infested. There is 100 acres of bush which it is intended to reserve. This section is being worked in conjunction with Larsen's and has been under development for about fourteen months. One hundred and fifty-eight acres has been burnt and surface sown, 36 acres cultivated, and 15 acres of run-out pasture renovated. A water-supply from a dam and ram has been installed, and 410 chains of new fencing erected. The work is about 40 per cent. completed. Large mobs of sheep have been carried intermittently as well as run cattle.

Metcalfe's (333 Acres).

(Control : Superintendent of Land-development, Te Kuiti.)

This block was purchased by the Crown five years ago and is subdivided into three sections on which two small herds have been milked. It was practically unimproved when taken over.

Three cottages have been built and added to and three cow sheds and yards and three store-sheds constructed ; 200 acres has been cleared and the swamp drained, 207 acres cultivated, and 322 acres of new grass sown ; 748 chains of new fences have been erected and 85 chains repaired, while 490 chains of drains have been dug ; 38 chains of internal roads have been formed and 100 chains of shelter-belts planted. One set of sheep-yards has been erected and a water-supply installed. The work is approximately 90 per cent. completed.

Stock carried : Sheep, 866 ; run cattle, 98 ; dairy cattle, 56 ; horses, 3.

Nilson's (1,158 Acres).

(Control : Superintendent of Land-development, Te Kuiti.)

This was a forfeited section of which part had been milked. The original grass had reverted and was ragwort infested. Active work and stocking has been progressing for about four years. Approximately half of this block is severed by a deep gorge and is not being developed, while 145 acres is in bush and is being reserved.

The main work has been top-dressing, but 228 chains of new fences have been erected and 182 chains repaired. The wool-shed has been removed to a more central position and re-erected. A set of sheep-yards has also been constructed.

Some trouble has been experienced amongst young sheep, and licks have been necessary.

The work is practically completed on this section.

Stock carried : Sheep, 877 ; run cattle, 130 ; dairy cattle, 2 ; horse, 1.

Pratt's Block (166 Acres).

(Control : Superintendent of Land-development, Te Kuiti.)

This area of 166 acres was purchased from the adjoining owner and has been subdivided into three milking sections. Two herds have been milked ; a third will be added next season. Electric power has been installed and milking-machines will be provided. It has been necessary to bore for water, and three supplies have been installed. Work has been progressing for four years and is practically completed.

The improvements comprise three houses, three cow sheds and yards, and three sheds ; and the necessary pig-sties and calf-pens have been provided.

The whole area, except 18 acres in crop and shelter-belts, has been sown in grass. New fencing erected, 288 chains ; 55 chains drains have been cut and one set of sheep-yards has been constructed.

Stock carried : Sheep, 373 ; dairy cattle, 87 ; horses, 4 ; pigs, 27.

Puketotara (201 Acres).

(Control : Superintendent of Land-development, Te Kuiti.)

This was originally an unimproved Crown section and it was necessary to form and metal 50 chains of road for access. Approximately 190 acres has been cleared and grassed. It was found necessary to bore for water, and a satisfactory supply has been obtained.

Work has been carried on for three years, and the improvements consist of one house, one cow shed and yard, one set sheep yards and dip, 297 chains of new fencing, and 186 chains of old fencing repaired ; 65 chains of drains have been dug, and 184 acres has been cultivated and 174 acres sown in new grass. The work on this section is practically completed.

Stock carried : Sheep, 1,025 ; dairy cattle, 3 ; run cattle, 58 ; horses, 4.

Pururu Block (2,685 Acres).

(Control : Superintendent of Land-development, Te Kuiti.)

This was originally a Native lease-hold and was purchased from the lessee by the Crown. It was the first scheme undertaken by the Superintendent of Land-development, Te Kuiti. Most of the area was originally bush clad and had been felled and grassed. It had almost completely reverted, and was badly ragwort and rabbit infested. Work commenced in October, 1933, and was confined to the central easy portion of 900 acres. It is now being extended to the west of the developed area. On the East approximately 300 acres of bush is being reserved.

The improvements consist of twelve cottages erected and two houses repaired, while nine cow sheds and yards have also been erected. Approximately 1,000 acres has been cleared and grassed, and an additional 200 acres has been burnt and surface sown. Nine hundred acres have been cultivated, and of this 836 acres has been sown in grass ; 2,371 chains of fences have been erected and 280 chains repaired, and 192 chains of drains have been dug. One set of sheep-yards, one dip, and one cattle-yard have been provided.

The original area of 900 acres is practically completed, but it may be necessary on account of ragwort to progressively renew a certain area of the present grassed land. Of the balance of the block there is approximately 700 acres which it is not intended to develop as it is either bush clad or too broken. This leaves approximately 1,000 acres which may be developed in the future.

Stock carried : Sheep, 3,539 ; run cattle, 176 ; dairy cattle, 267 ; horses, 18 ; pigs, 37.

Thirty-seven men are employed.

Vincent's Block (195 Acres).

(Control : Superintendent of Land-development, Te Kuiti.)

This was an abandoned section very badly deteriorated and ragwort infested. Work has been proceeding for approximately three years and a half, and the following improvements have been effected : One dwelling has been erected, 80 acres has been cleared, 108 acres has been cultivated of which 90 acres has been sown in new grass, and 56 acres of old pasture has been renewed ; 163 chains of new fences have been completed and 65 chains repaired, while 32 chains of drains have been cut, including one large creek deviation. One set of sheep-yards has been constructed. The work on this section is practically completed. The remainder will be progressively undertaken as seasonal work.

Stock carried : Sheep, 342 ; run cattle, 78 ; dairy cattle, 4 ; horses, 6.

Rumbles' Block (379 Acres).

(Control : Superintendent of Land-development, Te Kuiti.)

This section was a forfeited one which had become almost totally reverted and badly infested with ragwort and rabbits. Work was commenced about three years ago, and the improvements consist of one house erected, 48 chains fences completed and 137 chains repaired, 28 acres clearing and 47 acres cultivation, of which 43 acres have been sown in grass. One set of sheep-yards has been erected. Work is approximately 40 per cent. completed.

Stock have been carried in large numbers intermittently.

Smith's Block (194 Acres).

(Control : Superintendent of Land-development, Te Kuiti.)

This was an abandoned section which had almost totally reverted and was badly ragwort infested. Work has been proceeding approximately twelve months, and comprises the following : 129 chains new fence erected and 45 chains repaired, and 25 chains drains dug. The scrub on 120 acres has been cut, and this area is ready for burning and sowing. The work is approximately 30 per cent. completed.

Fairly large mobs of stock have been grazed intermittently for purposes of ragwort and fern control.

Stanley's Block (177 Acres).

(Control : Superintendent of Land-development, Te Kuiti.)

This was an abandoned section very badly infested with ragwort and almost totally reverted. Work has been in progress for twelve months, and the following comprises the work completed : Dwelling repaired, 74 acres cleared and sown in grass, 6 acres cultivated, 180 chains of new fencing erected and 80 chains repaired, while 63 chains of drains have been dug. The work has been approximately 30 per cent. completed.

Large numbers of stock are grazed intermittently for ragwort and fern control.

Te Tahi Block (430 Acres).

(Control : Superintendent of Land-development, Te Kuiti.)

This was an abandoned section which had for the most part totally reverted to fern and manuka, &c. Approximately 50 acres of worn-out pasture was infested with ragwort. Work has been proceeding for twelve months, and the following improvements have been effected : 150 acres cleared, 20 acres cultivated and sown in swedes, and 280 chains of new fences erected and 30 chains repaired. Work is approximately 30 per cent. completed.

No stock has yet been carried.

Waitanguru Block (6,633 Acres).

(Control : Superintendent of Land-development, Te Kuiti.)

This block is comprised of eleven sections, and others will be included in the near future. This was one of the original schemes. The country was badly deteriorated and ragwort infested, and in addition was subject to malnutrition in sheep. This latter has been overcome with suitable lime and super top-dressing used in conjunction with stock-licks, and the ragwort is now completely controlled. Work has been in operation for five years, and the following is a summary of the improvements effected : Four dwellings erected and four renovated, 1,249 acres cleared, 456 acres cultivated, 1,753 acres sown in new grass, and 129 acres of old grass reconditioned ; 2,521 chains of new fences have been erected, and 118 chains repaired, 280 chains of drains have been cut, one water-supply installed, four cow sheds and yards have been constructed, and one wool-shed and yards renovated. Four sets of sheep-yards have been constructed, also two cattle-yards and two dips.

As this area is being continually added to, there still remains a considerable amount of work to do.

Stock carried : Sheep, 6,192 ; run cattle, 542 ; dairy cattle, 25 ; horses, 17.

Sixty-eight men are employed.

Watson's Block (1,048 Acres).

(Control : Superintendent of Land-development, Te Kuiti.)

This was an abandoned section totally deteriorated and ragwort infested. It is intended to concentrate on approximately 400 acres and reserve the balance, which is mainly in bush.

Work has been progressing for about four years, and the following improvements have been completed : One house has been renovated, one set of cattle-yards erected, and a dip constructed ; 155 acres has been cleared, burnt, and patch sown ; 57 acres cultivated, and of this 50 acres has been sown in grass ; 535 chains of new fencing have been erected and 69 chains of fences repaired.

The work on the front portion is practically completed, and the remainder will be handled as a seasonal operation.

Stock carried : Sheep, 869 ; run cattle, 95 ; dairy cattle, 2 ; horses, 3.

Wharepapa (3,676 Acres).

(Control : Superintendent of Land-development, Te Kuiti.)

This is also one of the blocks taken over from the Waikato Land Settlement Society, which had completed a very large amount of work.

A summary of the improvements is as follows : Clearing, 1,791 acres ; cultivated, 936 acres ; new grass sown, 1,090 acres ; old grass reconditioned, 314 acres ; 1,203 chains of new fences have been erected and 580 chains repaired ; while 530 chains drains have been cut. One water-supply has been installed, seven houses built and 2 repaired, and one dip constructed. The work on this block is more than half completed.

Stock carried : Sheep, 4,173 ; run cattle, 527 ; dairy cattle, 15 ; horses, 24.

PARTICULARS OF THE OPERATIONS OF THE SMALL FARMS BOARD IN THE AUCKLAND LAND DISTRICT.

Allotted Holdings : (a) Where Settlers' Charges have been fixed.

Block.	Area.	Number of Holdings.	Rental Value.	Amount of Instalment Mortgage.	Amount of Current Account.	Stock carried (Cows).	Estimated Total Annual Revenue.
	Acres.		£	£	£		£
Murupara	1,364	14	1,060	13,905	6,369	503	4,100
Tarawera	932	9	1,378	11,190	4,176	340	4,486
Broadlands	865	8	775	10,140	3,622	338	3,361
Whangamarino	1,093	9	979	11,690	623	370	5,877
Parks	289	6	3,110	4,330	151	197	2,880
Wainui South	782	7	1,610	8,745	5,157	291	3,457
Onepu	690	10	520	8,190	2,178	365	3,300
Blackshaws (part)	87	2	1,390	490	84	60	991
Individual holdings (not in blocks)	2,814	43	9,734	17,922	14,014	971	13,644
Totals	8,916	108	20,556	86,602	36,374	3,435	42,096

Allotted Holdings : (b) Where settlers' Charges have not been fixed.

Block.	Area.	Number of Holdings.	Stock carried (Cows).	Estimated Total Annual Revenue.
	Acres.			£
Part Blackshaws	152	3	53	1,204
Wharere	233	5	149	1,284
Individual holding (not in a block)	13	1
Totals	398	9	202	2,488

Block.	Area.	Number of Men employed.	Stock carried.					Sales.								
			Sheep.	Dairy Cattle.	Run Cattle.	Pigs.	Horses.	Butterfat.		Wool.		Cattle.		Sheep.		Pigs.
								Pounds.	Value.	Pounds.	Value.	Number.	Value.	Number.	Value.	
..	Acres.	30	579	74	757	9	5	5,182	£ 285	2,724	£ 94	131	£ 1,161	.. 67	10	£ 27
..	2,590	50	97	187	629	..	8	1,034	34	110	648
..	56	1	..	30
..	5,400	25	30	..	3
..	12,000	83	70
..	Paeroa	17
..	Waikite
..	Whirinaki	..	1,200
..	Pouarua	80	485	58
..	Kerepechi Extension	8	587
..	Hoe-o-Tainui	21	484	579	30	89	17	49,340	3,120	3,987	135	2	12	250	230	466
..	Mill Road	147	..	57	11,075	7,029	42	33	..	37	67
..	Arohena	109	4,445	7	186	..	13	26,268	914	1	6	1,056	956	..
..	Bain's ..	5	260	6	24	..	3	1,252	34	40	49	..
..	Benton's ..	1	896	5	71	..	2	7,110	209	384	192	..
..	Burns' ..	1	310	4	25	..	3	1,760	52	360	165	..
..	Cruikshank's	2	1,024	4	69	..	1	8,163	268	3	10	498	226	..
..	Ellicott's	38	3,208	92	606	12	20	5,002	330	24,183	767	128	1,436	757	351	43
..	Foss's ..	10	583	1	78	..	5	3,296	95	193	110	..
..	Headertson's	26	1,619	..	199	..	9	18,610	518	1,044	591	..
..	Hill's ..	9	722	48	57	20	7	6,098	404	5,355	145	7	26	764	451	71
..	Karangi	26	4,607	18	555	..	14	662	56	2,431	836	543	3,028	824	632	15
..	Kataringa	36	451	..	44	..	4	2,262	65
..	Karakariki	20	1,965	30	234	..	14	116	6	12,656	478	253	1,530	1,856	1,410	27
..	Langdon's	12	546	6	79	..	5	3,553	113	225	157	..
..	Larsen's	6	1,298	7	45	..	7	9,698	302	1	6	406	230	..
..	Lee's ..	19	410	139	..	47	3	16,272	1,075	3,706	116	12	36	145	84	210
..	Mathihi	7	8	27	..	12	2	2,748	186	1,306	37	6	23	..	19	43
..	Merrin's	10	40	6,363	191	113	1,166	284	187	74
..	McCalfe's	7	866	56	98	21	3	5,356	356	6,241	166	1	10	200	100	..
..	Nilson's	3	877	2	130	..	1
..	Piha
..	Pratt's ..	3	373	87	..	27	4	8,516	559	2,507	73	12	50	193	134	97
..	Puketotara	201	3	1,025	3	58	4	6,203	198	214	57	..
..	Pururu	37	3,539	267	176	37	18	13,911	1,044	23,418	853	31	103	134	98	143
..	Rumbles'	3	51	2	6	1,814	62	220	179	..
..	Smith's	7
..	Stanley's	13
..	Te Tahu	10	3
..	Vincent's	8	342	4	78	..	6	3,799	112	770	473	..
..	Watanguru	68	6,192	25	542	..	17	37,218	1,294	6	30	1,640	1,361	..
..	Watson's	5	869	2	95	..	3	5,496	163	21	168
..	Wharepapa	37	4,173	15	527	..	24	13,146	388	132	1,020	2,710	1,714	..
Totals	81,125	858	42,344	1,842	6,079	274	402	124,278	14,450	267,559	8,712	1,555	10,502	15,378	10,320	1,283

TARANAKI LAND DISTRICT.

Brickland's Block (153 Acres).

(Control : Superintendent of Land-development, Te Kuiti.)

This was a badly ragwort-infested abandoned section. Work was commenced last spring. Sixty acres have been cleared, 18 chains of drain dug, and 123 chains of new fences erected. No portion has yet been cultivated, and stock has been grazed only intermittently.

The block is situated in the Mapara Survey District, Waitomo County.

Brough's Block (1,953 Acres).

(Control : Superintendent of Land-development, Te Kuiti.)

The lease of this section, which is in the Aria Survey District, Waitomo County, was forfeited in March, 1936, and efforts to obtain a reselection were unsuccessful. It was finally decided that the Small Farms Board should take over and proceed with reconditioning. A start was made with the work in the spring of 1938, and was confined to scrub-cutting, fencing, and the sowing of 42 acres of swedes and turnips. The house has been renovated, and a dip and yards constructed.

Stock carried temporarily : 635 sheep, 97 run cattle, and 3 horses.

Seven men are employed.

Crawford's Block (383 Acres).

(Control : Superintendent of Land-development, Te Kuiti.)

In 1932 the Small Farms Board established a tenant on part Section 5, Lot 1, Mapara Survey District, and his ultimate success was confidently predicted. However, a breakdown in health spoilt his chances, and ultimately he was forced to vacate. Ragwort had made its reappearance, and the Board decided therefore that the best course would be to allow the Superintendent of Land-development to take over the section for reconditioning.

Work was commenced in the spring of 1938, when 20 acres of swedes was sown. The programme to be undertaken will include scrub-cutting, fencing, and draining. Twenty acres has been cleared, 14 chains additional fencing erected, and 9 chains of drains dug.

Two men are employed.

There is a possibility of a further area of Crown land adjoining this block being taken over by the Superintendent.

Clifton's Block (612 Acres).

(Control : Superintendent of Land-development, Te Kuiti.)

The lease of this property was forfeited in June, 1936, and as there was little prospect of obtaining reselection the Small Farms Board agreed to take over and work the area in conjunction with adjoining land already under its control.

Six men have been employed clearing the surface, sowing, and top-dressing 200 acres of scrub country. In addition, road fences have been renovated, 125 chains of subdivisional fencing re-erected, 38 chains drains dug, and 20 acres ploughed and sown in root-crops. A new dwelling has been built, and dip and yards constructed. Work was commenced in the late autumn of 1938.

Green's Block (666 Acres).

(Control : Superintendent of Land-development, Te Kuiti.)

This forfeited leasehold, situated in the Mapara Survey District, Waitomo County, has just been taken over by the Board preparatory to reconditioning work being undertaken. The access bridge has been repaired to enable stock to be grazed and the tractor to be used.

The improvements on the property at the date of forfeiture were an asset of the State Advances Corporation, which agreed to sell at valuation.

Jensen's Block (773 Acres).

(Control : Superintendent of Land-development, Te Kuiti.)

This was an abandoned section on which work has been progressing during the past year. There was approximately 170 acres of old pasture which has been fenced, top-dressed, and crushed. The ragwort is now completely controlled.

Two hundred and fifty chains of fences have been erected or repaired, 190 chains of drains dug, approximately 180 acres have been cleared, burnt, and grassed, 32 acres have been sown in swedes, and a water-supply installed. Work is about 40 per cent. completed.

Number of workmen employed : Twelve. Stock carried : Sheep, 399 ; run cattle, 72 ; horses, 4.

Geddes' Block (838 Acres).

(Control : Superintendent of Land-development, Te Kuiti.)

This section was until recently held under renewable lease subject to a mortgage to the State Advances Corporation. The lessee was unable to carry on, and following forfeiture of the lease the property was offered to the Small Farms Board, which decided to acquire the interest of the mortgagee and proceed with reconditioning. A start has not yet been made with the work.

Jacobs' Block (250 Acres).

(Control : Superintendent of Land-development, Te Kuiti.)

This section was practically all reverted and was very badly ragwort infested. Work commenced about a year ago, and has been confined to clearing and fencing. Seven acres have been sown in swedes, 245 chains fencing have been erected, approximately 80 acres of scrub have been cut and burnt, and a total of approximately 150 acres have been surface sown. No new buildings have yet been erected on this section, on which the work is about 50 per cent. completed.

The block is in the Totoro Survey District, Waitomo County.

Stock carried : Sheep, 245 ; run cattle, 48.

Nicol's (163 Acres).

(Control : Superintendent of Land-development, Te Kuiti.)

This was a forfeited section infested with ragwort and blackberry and partly reverted to short manuka, and in addition there were 43 acres of heavy manuka. Work has been in progress for about a year, and the following has been completed : The house has been renovated, 70 acres cleared, 26 acres cultivated, 157 chains new fencing erected, and 21 chains of drains dug. A gravitation water-supply has been installed. Work is approximately 75 per cent. completed.

The block is situated in the Totoro Survey District, Waitomo County.

Eleven men are employed.

Stock carried : Sheep, 396 ; run cattle, 51 ; dairy cattle, 2 ; horses, 4.

Mapara Block (211 Acres).

(Control : Superintendent of Land-development, Te Kuiti.)

This was a forfeited section badly reverted and ragwort infested. Work has been proceeding for approximately eighteen months. One house has been renovated, 100 acres cleared, and 150 acres cultivated, of which 44 acres have been sown in new grass ; 335 chains new fencing have been erected and 130 chains drains dug. The work is approximately 50 per cent. completed.

Six men are employed.

Stock carried : Sheep, 126 ; dairy cow, 1 ; horses, 4.

Large numbers of sheep and cattle have been carried intermittently.

Ngatamahine Block (2,733 Acres).

(Control : Superintendent of Land-development, Te Kuiti.)

This block, situated at Wairere Falls, Waitomo County, was acquired from Messrs. Tucker and Wilson in 1933. It was one of the original purchases of the Board. Development was started by the Public Works Department, but the Superintendent of Land-development, Te Kuiti, has now assumed the complete control.

During a period of five years, eleven houses and seven cow-sheds have been erected, five separate water-supplies installed, 1,065 acres has been cleared, 626 acres cultivated, 824 acres sown in new grass, and 1,540 acres of old grass has been reconditioned. The new fencing erected totals 2,073 chains and, in addition, 887 chains of old fencing has been repaired. A drainage system involving the cutting of 1,109 chains of new drains has been completed. One set of sheep-yards with dip has been provided.

The work on this property, which is providing employment for fifty men, is approximately 85 per cent. completed.

Stock carried : 3,660 sheep, 419 run cattle, 312 dairy cattle, and 21 horses. Separate herds are being milked in seven sheds by prospective settlers.

Northcot's Block (511 Acres).

(Control : Superintendent of Land-development, Te Kuiti.)

When the lease of this section was forfeited in April, 1937, it was decided that the Small Farms Board should purchase the interest of the mortgagee, the State Advances Corporation, and proceed with reconditioning under the control of the Superintendent of Land-development, Te Kuiti.

One hundred and eighty-six acres of Crown land adjoining was also set apart for the purposes of the scheme, and the two areas are being worked as one section.

Reconditioning commenced about twelve months ago, and to date the following work has been completed : Dwelling renovated, 86 chains of new fencing erected, 115 chains drains cut, and 120 acres cleared. There is about 259 acres in bush, which will be left in the meantime. Stock has been carried only intermittently, as the fences are not all stock-proof.

Number of men employed : Sixteen.

O'Keefe's (236 Acres).

(Control : Superintendent of Land-development, Te Kuiti.)

This section was purchased from the State Advances Corporation. It had become very badly ragwort infested, the pastures had run out, and manuka and other second growth was rapidly spreading. Approximately 80 acres have not yet been developed owing to their isolated position, but it is intended to bring this in with stock after burning and surface sowing. Work has been progressing for three years, and the following improvements have been completed : One house has been renovated, 360 chains of new fence erected and 340 chains repaired, while 70 chains of drains have been dug ; 140 acres have been cleared, 60 acres cultivated and new grass sown on 120 acres, and 10 acres of old grass have been renovated. One set of sheep-yards has been constructed.

Work on the present portion of 154 acres is practically completed, and the remainder mentioned above will be brought in cheaply as the opportunity offers.

Number of men employed : Four.

Stock carried : Sheep, 1,027 ; dairy cattle, 2 ; run cattle, 31 ; horses, 4.

Olsen's Block (184 Acres).

(Control : Superintendent of Land-development, Te Kuiti.)

This is another abandoned section situated in the Mapara Survey District, Waitomo County. When the Superintendent took over, the pastures had practically totally reverted to fern and scrub, and were badly infested with ragwort. Work has only recently commenced, but 143 chains of new fencing has already been erected, 14 chains old fencing repaired, and 17 chains new drains dug. An area of 69 acres has been cleared and 12 acres cultivated ; 5 acres new grass has been sown.

Number of men employed : Seven.

Owen Block (580 Acres).

(Control : Superintendent of Land-development, Te Kuiti.)

This block comprises two abandoned sections which were totally reverted and badly infested with ragwort when the Small Farms Board took over. Approximately 70 acres was in standing bush, which will be reserved.

Work has been in progress for about three years, and the improvements effected comprise 1,069 chains new fencing, 240 chains new drains, 450 acres cleared, 146 acres cultivated, and 436 acres sown in new grass.

Fifteen men are employed, and the work is about 80 per cent. completed.

Stock carried : 1,389 sheep, 2 dairy cows, 160 run cattle, and 8 horses.

Patoto Block (721 Acres).

(Control : Superintendent of Land-development, Te Kuiti.)

This block is comprised of three abandoned sections practically totally reverted and badly ragwort infested. Three miles of access road were required to be formed and metalled before work could be commenced. There are 243 acres of bush, which it is intended to leave standing. Work was commenced eighteen months ago, and consists of 644 chains new fencing completed and 20 chains repaired, and 20 chains of drains dug ; 390 acres have been cleared, 35 acres cultivated, and 265 acres sown in new grass. One set of sheep-yards has been constructed. Work is about one-third completed.

Eight men are employed.

Stock carried : Sheep, 675 ; run cattle, 3 ; horses, 4.

Piu Block (1,909 Acres).

(Control : Superintendent of Land-development, Te Kuiti.)

Four abandoned sections which were totally reverted and badly infested with ragwort comprise this scheme, to which has been added a fifth section in the centre of the block purchased from the occupier. The purchase was necessary to give access to the western part of the block.

Work has been in progress for three years, and the house has been repaired, 678 chains new fencing completed, 664 chains old fencing repaired, and 500 chains new drains have been dug ; 685 acres has been cleared, 214 acres cultivated, 314 acres surface sown, and 150 acres old pasture renovated. It has been necessary to form and metal 220 chains of road and to erect one set of sheep-yards (with dip) and one set of cattle-yards.

The thirteen men employed have the work about 50 per cent. completed.

Stock carried : 2,555 sheep, 6 dairy cattle, 67 run cattle, and 7 horses.

Robertson's Block (316 Acres).

(Control : Superintendent of Land-development, Te Kuiti.)

This was a small-farm section taken over by this Branch fifteen months ago. It had partly reverted to fern, and ragwort was in evidence. This area now includes another adjoining abandoned section in a similar state.

Work completed is comprised of one house erected and 278 chains fences erected and 25 chains repaired ; 66 chains of drains have been dug ; 151 acres have been cleared, 72 acres cultivated, of which 61 acres have been sown in grass, and 12 acres of old pasture have been reconditioned. Work is approximately 50 per cent. completed.

Eight men are employed.

Sheep have been carried intermittently for the purpose of ragwort and fern control.

Tapuwae Block (3,328 Acres).

(Control : Superintendent of Land-development, Te Kuiti.)

The above block was purchased by the Lands Development Board in 1930 from the Tunnel Timber Co., Ltd. About 100 acres was then in grass, the balance being milled bush, which was later felled by contract. The whole area was for a time worked as a station under the supervision of the Commissioner of Crown Lands, New Plymouth, but in July, 1938, it was considered that it would be advantageous from the point of view of control if the area were handed over to the Superintendent of Land-development, who was operating on other areas in the locality.

The Superintendent has continued to run the place as a station, but nevertheless proposes undertaking extensive development operations with a view to increasing the area in grass.

Since July, 1938, one dwelling has been repaired, 163 acres cleared, of which 122 acres has been cultivated, and 23 acres sown in new grass.

Thirty-five men are employed.

Stock carried : 6,481 sheep, 843 run cattle, 4 dairy cattle, and 15 horses.

West's Block (657 Acres).

(Control : Superintendent of Land-development, Te Kuiti.)

This is an abandoned Crown leasehold situated at Aria which has been handed over to the Superintendent of Land-development, Te Kuiti, for reconditioning. No work has yet been undertaken.

O'Sullivan's Block (559 Acres).

(Control : Superintendent of Land-development, Te Kuiti.)

This block is in the same position as West's, referred to above. The two areas will be worked as one unit.

Zimmerman's (181 Acres).

(Control : Superintendent of Land-development, Te Kuiti.)

This was a very badly deteriorated and ragwort-infested forfeited section on which work has been proceeding for two years. Improvements effected are clearing, 50 acres ; cultivation, 17 acres ; grass surface sown, 90 acres ; new fences erected, 185 chains, and 60 chains repaired ; while 19 chains of drains have been dug. One set of sheep-yards and one dip and yards have been constructed and one dwelling repaired. The work is approximately 60 per cent. completed.

Stock carried : Sheep, 806 ; dairy cattle, 1 ; horse, 1.

In this case the large number of sheep was carried intermittently for control purposes.

Waihuka Block (2,805 Acres).

(Control : Superintendent of Land-development, Te Kuiti.)

This block consists of five sections—one of 1,371 acres was forfeited, two comprise unoccupied Crown land in bush (485 acres), and two had been abandoned. The bush sections are being reserved for fencing-timber. There was approximately 200 acres in grass which has been renovated, and the ragwort which had badly infested another 80 acres has been controlled. The balance is unimproved land covered with manuka and fern, which it is proposed to clear. Approximately 900 acres is ploughable.

Work has been in progress for about twelve months, and 126 chains of new fencing has been erected, 245 chains old fencing repaired, and 191 chains new drains dug ; 616 acres has been cleared and 71 acres cultivated.

Number of workmen employed : Fifty-three.

Stock carried : Sheep, 672 ; run cattle, 45 ; horses, 6.

WELLINGTON LAND DISTRICT.

Makaranui (1,500 Acres).

(Control: Superintendent of Land-development, Te Kuiti.)

This block is situated at Raetihi and was purchased from the Bank of New Zealand. It was originally in forest, which had been milled. The clearing of the stumps has been undertaken by the Public Works Department and has been a work of considerable magnitude, 109 men being employed.

Two houses have been erected, 700 acres has been cleared, 124 acres cultivated, and 300 acres sown in grass, 221 chains of new fencing has been erected and 584 chains of old fence repaired, while 1,054 chains of drains have been cut. Work on this block has been proceeding for about a year and is approximately 30 per cent. completed.

Stock carried: Sheep, 3,501; dairy cattle, 2; run cattle, 110; horses, 4.

Raetihi Block (1,410 Acres).

(Control: Superintendent of Land-development, Te Kuiti.)

This area was originally bush clad and milled. It consists of approximately 150 acres of steep country, and the balance is one-third each of low hills, easy slopes, and flats. The latter have been drained by an extensive drainage system. This work, also a very considerable amount of stumping and clearing, was carried out by the Public Works Department.

Work has been proceeding for three years and a large number of men has been employed. The improvements consist of three cottages erected and one repaired, two sets of sheep-yards and one dip and one set of cattle-yards constructed, and the wool-shed repaired; 2,526 chains of new fencing has been erected and 200 chains repaired, 530 chains of drains have been dug, 1,169 acres have been cleared, 248 acres cultivated (of this, 160 acres have been sown in new grass), while 100 acres of the old pasture have been reconditioned and 130 acres of bush felled and grassed. The work on the block is about 70 per cent. completed.

Stock carried: Sheep, 4,203; run cattle, 332; dairy cattle, 1; horses, 9.

Number of men employed: Twenty-one.

Ohakune (1,076 Acres).

(Control: Superintendent of Land-development, Te Kuiti.)

This was originally bush-clad land which had been milled. The grass which was sown had deteriorated. The Public Works Department, employing a large number of men, has stumped and cleared approximately 870 acres, and this is being ploughed, cropped, and grassed. Work was commenced approximately three years ago, and to date one house and 440 chains of new fencing have been erected and 280 chains of old fences repaired, and 30 chains of drains dug; 318 acres has been cultivated and 193 acres of new grass sown.

This section has been used as a stock reservoir, and large swede-crops have been grown. Sheep are sent to winter at Ohakune and are then drawn for the northern sections in the spring as required. Some hundreds of bags of chaff have also been produced for the horses belonging to the Department.

A new set of sheep yards and dip and cattle-yards have been constructed. The work is about 40 per cent. completed.

Stock carried: Sheep, 1,743; run cattle, 143; dairy cattle, 4; horses, 2.

Up to five thousand wethers were wintered on this block in 1937.

Blocks in Course of Development in the Wellington Land District.

Block.	Area.	Number of Men employed.	Stock carried.				Sales.					
			Sheep.	Dairy Cattle.	Run Cattle.	Horses.	Wool.		Cattle.		Sheep.	
							Pounds.	Value.	Number.	Value.	Number.	Value.
	Acres.							£	£	£		£
Makaranui ..	1,500	109	3,501	2	110	4	16,527	480	144	917	316	259
Ohakune ..	1,076	18	1,743	4	143	2	6,091	145	35	262	3,500	4,200
Raetihi ..	1,410	21	4,203	1	332	9	20,936	689	148	444	1,692	2,081
Totals ..	3,986	148	9,447	7	585	15	43,554	1,314	327	1,623	5,508	6,540

HAWKE'S BAY LAND DISTRICT.

Ahuriri Lagoon Development (7,753 Acres).

Development operations have increased steadily over the whole area during the last year, which was most marked by the abnormally wet autumn and dry summer. In the April floods the whole of the northern portion and most of the southern area was flooded almost to the old high-tide level, this being due to the Esk River overflowing and the flood-waters breaking the contour banks, which were not completed. Fortunately all the stock was moved before the flood-level became dangerous and the losses were negligible. Other than the loss of some 150 acres of winter feed and the reducing of the stock-carrying capacity little harm was done, but on the other hand the flooding was of enormous value in reducing salt content and depositing good alluvial silt over a large area.

The permanent-pasture areas have improved with the growth of clovers, and the bare salt patches have diminished and are now covered with *Puccinellia stricta*, a secondary grass of some grazing-value. The temporary pastures have given excellent grazing, but owing to rise of salt, with resulting bare patches, an area of approximately 50 acres has had to be resown. A further area of 80 acres has been sown in temporary pasture and approximately 30 acres in permanent pasture, 150 acres has been sown in barley for winter feed. All the grass areas have been top-dressed with superphosphate.

Further experimental work with bare areas and the establishment of strawberry clover and asparagus has been undertaken, and the results of last year's experimental cropping recorded. It has been shown that the soil is not ready to successfully grow farm crops excepting mangels. The two areas of lucerne did fairly well, two cuts being obtained before the dry summer set in.

Further new roads have been constructed, the northern area has been completely dewatered and drained, and the whole area well subdivided into grazing-blocks. A new hay-barn has been erected, and water from two artesian bores piped to the whole of the southern portion.

The stock wintered fairly well. The lambing percentage was 75 per cent., the low figure being due to the wet conditions and to the loss of lambs in drains. The cattle did well up until the summer, when sales were necessary owing to fescue poisoning. Since then most of the tall fescue on the southern end has been grubbed out. It is hoped to control fescue growth next spring by heavy stocking with wethers.

The area in permanent pasture totals 343 acres, temporary pasture 508 acres, and area in crops 216 acres.

Stock carried: Breeding-ewes, 3,424; wethers, 3,850; lambs, 472; rams, 113; cattle, 34; and horses, 3.

Number of men employed on the development, excluding engineering reclamation, is thirteen.

PARTICULARS OF THE OPERATIONS OF THE SMALL FARMS BOARD IN THE HAWKE'S BAY LAND DISTRICT.

Allotted Holdings: Where Settlers' Charges have been fixed.

Block.	Area.	Number of Holdings.	Rental Value.	Amount of Instalment Mortgage.	Amount of Current Account.	Stock carried.	Estimated Total Annual Revenue.
	A. R. P.		£ s. d.	£ s. d.	£ s. d.		£
Richmond ..	196 3 31·8	38	123 1 9	21,179 3 0	503 4 9	110 cattle, 2 horses, 15 sheep, 20 pigs, 762 poultry	752
Karamu.. ..	103 1 22	19	291 15 0	9,567 5 5	305 16 11	45 cattle, 76 pigs, 153 poultry	904
Individual holdings	680 3 17·6	12	324 7 6	425 0 0	4,098 18 4	176 cattle, 13 horses, 212 sheep, 29 pigs, 232 poultry	1,958

Block in Course of Development in the Hawke's Bay Land District.

Block.	Area.	Number of Men em- ployed.	Stock carried.	Sales.												
				Wool.			Cattle.		Sheep.							
				Bales.	Weight.	Value.	Number.	Value.	Number.	Value.						
Ahuriri Lagoon	Acres. 7,753	13	7,859 sheep, 35 cattle, 3 horses	141	lb. 51,900	£ 1,909	s. 5	d. 8	161	£ 1,536	s. 5	d. 3	4,995	£ 4,188	s. 11	d. 9

NELSON LAND DISTRICT.

Pakihi Land-development, Sergeant's Hill, Westport.

Rapid progress was made with development of this block, and pastures are established satisfactorily. Owing to the wet season haymaking was much retarded, and resulted in *Lotus major* almost taking charge, with Yorkshire fog also in evidence. Where pastures were systematically grazed they held well generally, but where any rank growth was permitted *Lotus major* took charge and appeared to smother the English grasses and clovers.

The first farm unit was established during the year and was run as an independent holding. If, after a period of two to three years, success is achieved further similar farms will be established. The area commenced the season with thirty-four heifers coming into profit, and the yield was quite satisfactory and the test good considering the young herd. Next season should show a marked increase in production. Costs of maintaining pastures are still high, but it is hoped as the land consolidates that these costs will steadily decrease.

On the balance of the development block dry cattle did remarkably well and some fine beef cattle were disposed of during the year. Over 340 head of cattle and eight horses are now grazing on the area so far developed and are all in splendid condition.

Ample supplies of hay and ensilage were harvested and should provide sufficient winter feed for all stock.

When the better-quality land is fully developed consideration can be given to the breeding of the replacement stock required. In the meantime, dry stock only, with the exception of the first farm unit, is being carried.

(Extract from report by Sir Theodore Rigg, K.B.E., Director of the Cawthron Institute.)

During the past year excellent progress has been made on the pakihi development at Sergeant's Hill, Westport. In the autumn, 1938, a further 240 acres of pakihi land on Hateley's and Kelpie's blocks were sown. The strike of grass and clovers on this area was very satisfactory, and good growth was made during the spring and summer.

During the present season Morris's block, comprising some 300 acres, was drained, treated, and sown with grass and clover. With the exception of an area of sandy land facing Utopia Road, the whole of the proposed development covering nearly 1,400 acres has now been sown in pasture.

The stock on all blocks have kept in excellent health and have made very satisfactory live-weight gains. An important event in the history of pakihi reclamation at Westport was the establishment in the spring of the first dairy-farm unit on a portion of the Buller Domain which was sown to pasture in the autumn of 1936.

Pastures.—The very wet spring and early summer on the West Coast adversely affected the growth of both pasture and hay crops. The rainfall for November and December was extraordinarily high, resulting in almost continuous saturation of the soil with water for several weeks. On the advent of drier weather in January and February great improvement in pasture growth resulted.

Despite the wet weather the pastures for the most part have come through wonderfully well. On the older sowing the sward has become denser and growth of rush and umbrella fern has been arrested. Some of the more recent sowings have done particularly well, the growth of clover being outstanding. The spring sowings, 1937, on Mikkelsen's block and the autumn sowings, 1938, on Hateley's and Kelpe's blocks were equal to any result so far obtained in pasture sowings on pakihi land at Westport.

Hay Crops.—In order to make suitable provision for winter feed approximately 100 acres of pasture were shut up for hay. The pastures received a top-dressing of a complete fertilizer towards the end of October or early in November. Owing to the wet weather, growth of the hay crops was slow and the yields were considerably smaller than those of the previous season. Frequent rains during January interfered with harvesting operations, and on this account rather more ensilage and less hay was made than was planned. February and March were more suitable for haymaking.

In all, some 60 acres were cut for hay, averaging about $1\frac{1}{2}$ tons per acre, and 40 acres were cut for ensilage, averaging about $3\frac{1}{2}$ tons per acre. These quantities of hay and ensilage should provide the necessary supplementary feed for the four hundred head of stock which will be grazed during the winter.

Stock.—All classes of stock, comprising heifers, steers, and bullocks, have done extremely well. No ailment has been experienced, and the animals have made satisfactory gains in live-weight. Last winter two hundred head of stock were carried on 650 acres of established pasture. The autumn was favourable to pasture growth, making it unnecessary to feed hay until the beginning of July. During July, August, and September hay was fed out at the rate of approximately 5 lb. per head per day. A line of twenty bullocks in prime condition was disposed of to the local butcher at a satisfactory price.

During the coming winter some 1,100 acres of pasture will be available for grazing, and arrangements have been completed for increasing the number of stock to four hundred.

Use of Licks.—In a previous report mention has been made of the successful use of cobalt drenches for calves on pakihi pastures. Calves affected with typical bush sickness were cured by the use of a weekly cobalt drench. In order to safeguard the health of stock from cobalt deficiency, a lick containing equal quantities of steamed bonemeal, dairy salt, and Nelson soil plus 16 oz. of cobalt chloride per ton of prepared lick was given last winter. The stock ate this lick greedily, consuming an average of 1 lb. per head per week over a recorded period of twenty-six weeks. The consumption of lick was much greater than was anticipated, the cobalt supplement being as high as 50 mg. per week per head. The cobalt supplement could no doubt be greatly reduced, but nevertheless excellent results for all classes of stock were obtained.

First Dairy-farm Unit.—With a view to testing a typical area of pakihi pasture under farm conditions, an area of 100 acres comprising both dry and rather wet fields was allotted as a dairy-farm unit. Arrangements were made for the erection of a cottage, milk-shed, and pig-pens with all the necessary plant to make the farm self-contained. The farm was stocked with thirty-five heifers reared on the "development," and thirty-four of these came into profit during October and November. Records of milk and butterfat production and of all costs in connection with the operation of the farm have been kept. So far the heifers have done reasonably well and have averaged about 20 lb. butterfat per head per month. The cream has been of good quality, being graded 93 choice at the factory. It is anticipated that the herd will average 140 lb. to 150 lb. butterfat per head for the season. Yields should be considerably higher next year. At the present time the pastures on the dairy-farm unit are looking very well, and the shelter-trees are making good growth.

Supplementary Fodder Crops.—Turnips, swedes, chou moulrier, mangels, oats, and maize are being tested as supplementary fodder crops on the sandy flats facing Utopia Road. The soil on this part of the property is a medium sand highly deficient in lime and phosphate. The soil for the most part is well drained and lends itself to root-crops. So far turnips are doing extremely well. Swedes, likewise, made a good start, but weed-growth is now checking the development of the crop.

Maize, chou moulrier, and mangels have not given good results. Wet weather and lack of cultivation were probably the most important factors militating against growth of the crops. It is also doubtful whether soil fertility is sufficiently high to give very good yields.

OTAGO LAND DISTRICT.

Papanui Farm Settlement (1,082 Acres).

This settlement is situated on the Otago Peninsula overlooking Papanui Inlet, about sixteen miles from Dunedin.

The property was purchased in November, 1933, from Mr. W. D. Allan and subdivided into nine sections. Development was started under the control of the Public Works Department, using unemployed labour, but in January, 1935, the camp was disbanded and the work continued by the prospective settlers working as a gang under the supervision of the Department's Field Inspector. In September, 1936, the settlers were allotted their sections, and they continued to work on their own until April, 1937, when it was decided that the block would benefit if additional land was brought in by the men working on wages. One settler who had spent a considerable amount of his own money on his section was allowed to continue on his own, and he is making good progress.

During the year 30 acres of standing bush was felled and approximately 75 acres of fallen bush was logged up. In addition, 40 acres of second growth was cut. A total area of 600 acres was top-dressed with basic slag, and the pasture responded well. Thirty acres was ploughed and sown in new grass, 40 tons of hay was cut, and this, together with 10 acres of turnips, will be used to fatten bullocks during the coming winter.

A small amount of new fencing was erected, and the existing fences were kept in good repair.

Stock carried: 1,103 ewes, 560 lambs, 9 rams, 29 dairy cows, 10 dairy heifers, 70 steers, 32 fat heifers, 11 bullocks, 6 calves, 1 bull, 8 horses, and 69 pigs.

The revenue for the year totals £5,061 4s. 10d., made up as follows:—

	£	s.	d.
Thirty-two bales wool	321	17	10
Cattle sales: 358 head	3,736	18	0
Sheep: 979 head	942	10	0
Pigs: 59 head	59	19	0
	£5,061	4	10

Number of men employed: Eight.

LAND-DEVELOPMENT UNDER LAND LAWS AMENDMENT ACT, 1929.

Operations under the land-development scheme have been continued during the year, and the progress of recent years has been well maintained. The Waihau Block, containing 963 acres, in the Hawke's Bay District, was brought under the scheme, and considerable progress has already been made in the development of this block.

The total net expenditure for the year on development was £31,443.

The financial assistance available to Crown tenants continues to be one of the scheme's important features, and the number of settlers who are receiving assistance in this way now totals 506. During the year a total of fourteen new loans were authorized. A total of £233,400 has been advanced for improvements and stock, and many of the tenants have now so consolidated their positions that their advances have been converted into instalment mortgages providing for repayment over a 36½-year term.

Pursuant to section 10 of the Land Laws Amendment Act, 1929, the following summary of operations during the year ended 31st March, 1939, is recorded:—

(a) THE SEVERAL AREAS OF UNOCCUPIED CROWN LANDS IN RESPECT OF WHICH DEVELOPMENT WORKS HAVE BEEN UNDERTAKEN DURING THE YEAR.

North Auckland Land District.

Batten's Block, of 1,524 acres, was formerly a discharged soldier settlement property, but is now being farmed and developed under the scheme. Development has as yet been confined mainly to scrub-cutting and fencing, and by this means, together with a systematic programme of top-dressing, the carrying-capacity is being built up.

Kapiro Block, containing 12,000 acres, is situated north of Kirikiri, in the Bay of Islands district. At present 30 acres in this block are being experimented with, and the present excellent strike of grass on this small area indicates that if the pasture can be maintained the successful future of this block is assured. It is proposed to increase the area to be grassed to 100 acres so that full information can be obtained as to the cost of development as well as the carrying-capacity of this particular class of land.

Auckland Land District.

Galatea Estate, comprising 22,326 acres, was purchased by the Crown in 1931, and development operations have continued since that date till a stage has now been reached where the cost of most of these activities is being met by the station revenue. Apart from the ordinary sales of sheep and cattle, a total of 1,200 bullocks were sold as chillers during the year, and the stock carried on the station on 31st March, 1939, was 15,000 sheep and 4,650 cattle. A water-supply scheme for the northern end of the estate was commenced, and progress during the year was sufficient to enable this area to be efficiently grazed. Although development operations have now reached an advanced stage a few years will elapse before all the pastures can be classed as consolidated, but experience has already shown that even under existing conditions dairying on this block can be carried on successfully, although the lighter portion of the estate suffers seriously during dry seasons.

Hawke's Bay Land District.

Kaheka Estate, of 10,048 acres, reverted to the Crown on the expiry of the leases granted before purchase of the blocks. Development during the year was confined mainly to fencing and scrub-cutting, but a considerable amount of fencing was damaged by floods in April and this had to be repaired. Carrying-capacity has been increased, and 11,725 sheep and 1,588 cattle were being carried on 31st March, 1939. Wool sold during the year realized £2,652, and sales of stock returned £5,730.

Kakariki Estate is a purchased estate of 19,288 acres at Kotemaori. Rapid progress continues to be made in the development of this estate, and 900 acres of second-growth scrub have been cleared and 100 acres stumped since the 1st April, 1938. That the pastures are being well maintained is indicated by the fact that over 200 tons of manures were spread during the year, and the stock carried has now been increased to 18,297 sheep, 1,444 cattle, and 47 horses. Four hundred and eleven bales of wool sold for £4,556, and the return from the sale of stock was £6,223.

Parinui Block, comprising 1,044 acres, has been improved very considerably during the short period of two years which has elapsed since development operations were first extended to this settlement. An increase of over 50 per cent. in the stock carried has been shown. Excellent results have been obtained from systematic top-dressing, and subterranean clover has been established on over 400 acres. The lambing percentage this year was the highest on record for the settlement, and the wool per sheep and prices obtained were also well above the average.

Waihau Block, of 963 acres, came under the land-development scheme for the first time this year and much progress has already been made. Approximately 345 acres of heavy scrub have been felled burnt and surface sown, and subterranean clover is being established on some 200 acres. Extensive improvements and renovations have been effected and a comprehensive fencing programme has been completed. At present 880 sheep and 40 cattle are being carried.

Taranaki Land District.

During the year the Tapuwae Estate, of 3,350 acres, which was being developed under this scheme, was taken over by the Small Farms Board. Since then development operations in this district have been confined chiefly to the Whangamomona Block, of 4,581 acres, and other abandoned properties. The productive capacity of these properties is being increased, and the stock at present carried comprises over 6,500 sheep, 680 cattle, 189 calves, and 56 dairy cows.

Canterbury Land District.

Ashton Block, of 703 acres, is situated in the Ashburton County, and although a great deal has been accomplished in establishing new pastures, clearing gorse, and repairing fences it is estimated that about 30 per cent. of the work still remains to be completed. When the development of this block was first undertaken it was practically worthless as a grazing proposition, but the work has now advanced to the extent that it is estimated that next year it will be self-supporting. Proceeds from the sale of sheep and wool amounted to £1,783 in the season just closed, and on the 31st March the total sheep carried was 1,180.

McKenzie Estate, which contains 199 acres, was being farmed and developed as an asset of the Discharged Soldiers' Settlement Account, but early in 1938 these operations were brought under the control of the Lands Development Board. Considerable progress has been made in draining, gorse-clearing, and the establishment of new pastures, and the year's operations resulted in a small profit. The carrying-capacity has been increased considerably, and on the 31st March, 1939, forty-seven cows, sixteen heifers, and fifty-five head of other stock was being carried.

(b) TOTAL COST OF DEVELOPMENT WORKS CARRIED OUT TO 31ST MARCH, 1939.

Block.	Expenditure on Development to 31st March, 1938.	Expenditure on Development during Year ended 31st March, 1939.	Total Expenditure on Development to 31st March, 1939.
<i>North Auckland Land District.</i>			
Wharekohe Block	£ 10,763	£ ..	£ 10,763
<i>Auckland Land District.</i>			
Arohena Block	207	..	207
Galatea Estate	120,778	20,599	141,377
Koromatua Block	4,466	..	4,466
Mangatutu Block	3,717	..	3,717
Ngakuru Block	84,825	..	84,825
Onepu Block*	20,120	..	20,120
Te Kauwhata Block	32,176	..	32,176
<i>Hawke's Bay Land District.</i>			
Kaheka Estate	134	3,547	3,681
Kakariki Estate	37,962	1,352	39,314
Parinui Block	590	1,736	2,326
Waihau Block	3,791	3,791
<i>Canterbury Land District.</i>			
Ashton Block	2,653	418	3,071
McKenzie Estate	1,263	..	1,263
Totals	319,654	31,443	351,097

* Part of Onepu Block taken over by Small Farms Board.

In addition to the expenditure on blocks as set out above, expenditure has been incurred on roading, survey, &c., of various areas which are being developed by the settlers themselves, bringing the total expenditure for developing, stock, roading, and surveys (apart from roading-costs payable out of the Public Works Fund) up to the 31st March, 1939, to £397,840, and providing for 590 farms exclusive of a number of blocks which have not yet been subdivided.

(c) AND (d) DEVELOPED ALLOTMENTS DISPOSED OF.

Block.	Number of Allotments disposed of.	Area.	Tenure.	Rental Capital Value.	Annual Rent, or Interest receivable.
		Acres.		£	£ s. d.
Galatea (part)	19	2,271	R.L.	17,045	852 5 0
Koromatua	4	538	R.L.	2,900	145 0 0
Mangatutu	5	771	R.L.	4,680	234 0 0
Ngakuru	45	8,697	R.L.	58,314	2,915 14 0
Onepu*	12	1,237	R.L.	11,675	583 15 0
Te Kauwhata	12	1,735	{ R.L.	8,325	416 5 0
Omahuta No. 2	1	230	{ D.P.	6,165	369 1 6
Wharekohe	15	1,879	R.L.	423	11 11 0
			R.L.	7,730	231 8 0
Totals	113	17,358	..	117,257	5,758 19 6

* In addition, eleven sections are held under the small-farms scheme.

(e) THE TOTAL AMOUNT ADVANCED TO CROWN TENANTS FOR THE DEVELOPMENT OF THEIR HOLDINGS, THE NUMBER OF ADVANCES, AND THE PURPOSE FOR WHICH ADVANCES ARE MADE.

Number of settlers assisted	506
Loans approved—							£
Improvements	246,096
Stock	21,558
							£267,654
Amounts actually advanced—							£
Improvements	215,878
Stock	17,522
							£233,400

STATEMENT SHOWING EXTENT OF OPERATIONS UNDER THE LAND-DEVELOPEMENT SCHEME AS AT 31st MARCH, 1939.

Block.	Area.	Number of Men employed.	Stock carried.				Produce, &c., sold during Year ended 31st March, 1939.			
			Sheep.	Cattle.	Horses.	Other Stock.	Quantity.	Value.		
North Auckland Land District.										
Batten's	Acres. 1,524	8	860	210	3	..	7,122 lb. wool..	215		
							261 sheep ..	153		
Auckland Land District.										
Galatea (including six share farms)	20,000	53	15,034	5,128	..	232	130,554 lb. wool	4,290		
							84,522 lb. butterfat	5,617		
							2,084 cattle ..	17,100		
							4,779 sheep ..	4,242		
							324 pigs ..	690		
Hawke's Bay Land District.										
Kaheka	10,048	8	11,725	1,588	15	..	90,315 lb. wool	2,652		
							4,624 sheep ..	4,102		
							166 cattle ..	1,628		
Kakariki	19,288	18	18,297	1,444	47	42	143,966 lb. wool	4,556		
							1,440 lb. butterfat	61		
							3,550 sheep ..	3,748		
							249 cattle ..	2,474		
Parinui	1,044	2	1,734	87	4	..	11,795 lb. wool	394		
							890 sheep ..	574		
							40 cattle ..	351		
Waihau	963	1	881	41	2	..	4,023 lb. wool..	152		
Taranaki Land District.										
Whangamomona	4,581	3	3,354	358	5	..	22,658 lb. wool	750		
							180 sheep ..	54		
							2 cattle ..	7		
Miscellaneous small properties (four)	2,822	4	3,214	572	8	..	24,012 lb. wool	764		
							760 sheep ..	532		
							15,991 lb. butterfat	1,174		
							11 cattle ..	46		
							33 other stock	12		
Canterbury Land District.										
Ashton	703	7	1,179	3	10,806 lb. wool	532		
							1,312 sheep ..	1,251		
McKenzie	199	9	..	74	..	44	51 cattle ..	91		
							83 pigs ..	133		
							10,982 lb. butterfat	641		
Totals	61,172	113	56,278	9,502	84	321	..	58,986		

SPECIAL SETTLEMENT OF INFERIOR LANDS.

The following summary of the lands dealt with during the year is furnished in accordance with the provisions of section 223 (14) of the Land Act, 1924 :—

- (a) Aggregate area of land set apart : Nil.
- (b) Number of allotments and aggregate area disposed of : Nil.

The total number of allotments taken up and the area held as at 31st March, 1939, was thirty-six allotments, 7,078 acres.

LANDS FOR SELECTION.

During the year 271,549 acres were taken up on various tenures, the number of selections being 1,062 under all headings. These figures include some 555 sections, comprising altogether an area of 78,546 acres, taken up under miscellaneous leases and licenses, so that the selections on permanent tenures numbered 507 sections, covering a total area of 193,003 acres. The following table gives the selections of Crown lands for the last five years :—

SELECTIONS UNDER ALL TENURES.

Year ending					Number.	Area. (Acres.)
31st March, 1935	1,036	302,915
31st March, 1936	1,037	210,026
31st March, 1937	1,342	463,178
31st March, 1938	1,072	232,225
31st March, 1939	1,062	271,549

The total of 271,549 acres selected during the year includes lands taken up under both permanent and temporary tenures, and also town and suburban lands. The permanent selections of rural lands only were as follows :—

Class of Land.				Number of Rural Sections selected.	Total Area selected.
					Acres.
Crown and national-endowment land		156	113,295
Settlement land	28	8,895
Education reserves, &c.	17	25,006
Grand totals	201	147,196

The lands dealt with above comprise both areas offered for the first time and areas which became available for reoffering through various reasons. The figures for entirely new rural areas selected during the year are as follows :—

Class of Land.				Number of New Rural Sections selected.	Total Area selected for the First Time.
					Acres.
Crown and national-endowment land		69	19,013
Settlement land	9	893
Educational reserves, &c.	3	213
Grand totals	81	20,119

RECEIPTS.

The receipts for the year from all sources totalled £1,429,501, a decrease of £147,729 on last year's figures.

The receipts for the last five years have been as follows : Year ending 31st March, 1935, £1,259,790 ; 1936, £1,276,510 ; 1937, £1,402,596 ; 1938, £1,577,230 ; 1939, £1,429,501.

POSTPONEMENTS, REMISSIONS, AND ARREARS OF RENT.

Rents the payment of which remained postponed at the 31st March amounted to £34,668. Arrears of rent at the 31st March (including arrears in respect of the current half-yearly charge) totalled £424,550, while remissions for the year totalled £396,239. The total remissions include the sum of £378,689 representing rent and interest remitted under the provisions of the Mortgagors and Lessees Rehabilitation Act, 1936.

REBATES.

For prompt payment of rent 17,356 Crown tenants were granted the usual rebates in terms of section 123 of the Land Act, 1924, and section 59 of the Land for Settlements Act, 1925. These rebates amounted to a total of £47,059.

NATIONAL ENDOWMENT.

Of the area in the national endowment, 6,253,024 acres were held under lease or license at the 31st March by 4,213 tenants paying an annual rental of £129,448, while a very large area (partly, however, covered by existing leases) had been set aside as provisional State forests. For further particulars *re* the national endowment, see parliamentary paper C.—14.

EDUCATIONAL ENDOWMENTS.

An area of approximately 797,824 acres of education endowments under the administration of the various Land Boards is leased to some 4,176 tenants, who pay a total annual rental of £118,844

LAND RESERVED FOR VARIOUS PURPOSES.

Under the provisions of section 360 of the Land Act, 1924, and section 71 of the Land for Settlements Act, 1925, various areas of Crown and settlement land were permanently reserved during the year. The reservations made totalled fifty-eight, covering an area of approximately 2,031 acres. A summary of work carried out under the heading is given below :—

Purpose of Reserve.	Number of Reservations.	Area.		
		A.	R.	P.
Buildings of the General Government	1	2	2	29
Camping	1	3	2	15·6
For the use of the aboriginal Natives of New Zealand	1	5	3	38
Gravel	3	7	1	23
Hall-site	3	2	1	1
Plantation	2	108	3	3
Public buildings of the General Government ..	6	13	0	9·9
Public-school site	8	25	0	21·3
Quarry	3	81	1	36·5
Recreation	18	572	0	2·59
River-protection	1	43	0	0
Roadman's cottage-site	2	5	3	3
School-site, addition to a	5	3	3	34·8
Site for county buildings	1	0	0	27·2
Water-conservation	2	656	0	9
Water-supply	1	500	0	0
Total	58	2,031	1	13·89

The above does not include areas that have been vested in the Crown as public reserves in town subdivisions pursuant to the provisions of section 16 of the Land Act, 1924.

RETIREMENT OF UNDER-SECRETARY.

Mr. W. Robertson, I.S.O., relinquished his active official duties on 31st March, 1939, from which date he commenced three months' leave prior to retiring from the position of Under-Secretary for Lands after forty-seven years' service.

Mr. Robertson joined the Dunedin office in 1892, and was subsequently attached to the Napier, Hokitika, and Invercargill offices. In 1913 he was promoted to Head Office, being transferred to Auckland in 1917. Upon the constitution of the North Auckland Land District in 1919 Mr. Robertson was selected to organize the new office for that district. In the same year he was appointed departmental Inspector, and in the years following was closely associated with the Dominion Revaluation Board in connection with the revaluation of soldier farms. He was appointed Assistant Under-Secretary in 1925, and in 1931 succeeded Mr. J. B. Thompson, C.B.E., as Under-Secretary for Lands. In addition to the office of Under-Secretary, he was also Land Purchase Controller and Chairman of the Dominion Land Purchase Board, Small Farms Board, Central Revaluation Board, Dominion Revaluation Board, and Tongariro National Park Board, as well as a member of various other Government Boards. In 1937 he received the decoration of a Companion of the Imperial Service Order.

EXPENDITURE.

Summary of Expenditure approved during the Year ended 31st March, 1939.

Name of Vote or Account.	Net Amount voted.	Gross Expenditure.	Recoveries.	Net Expenditure.
<i>Voted Expenditure.</i>				
<i>Vote, Lands and Survey—</i>	£	£	£	£
Subdivision I	241,272	316,081	78,435	237,646
Subdivision II	59,623	51,184	..	51,184
Subdivision III	13,140	11,366	..	11,366
Total, Vote, Lands and Survey	314,035	378,631	78,435	300,196
Vote, Land for Settlements	345,000	193,284	66	193,218
<i>Vote, Swamp Land Drainage—</i>				
Hauraki Plains District	18,100	24,457	18,295	6,162
Swamp Land Drainage Districts	900	474	1,312	Cr. 838
Vote, Settlement of Unemployed Workers	340,000	526,397	181,713	344,684
Total voted expenditure	1,018,035	1,123,243	279,821	843,422
<i>Other Expenditure.</i>				
<i>Land for Settlements Account—</i>				
Expenditure from capital proceeds of sales of Crown and national-endowment lands		13,038	..	13,038
Interest and other charges		31,465	..	31,465
Expenditure under special Acts of the Legislature—Section 295 (2), Land Act, 1924 : Administration expenses of national-endowment lands		6,048	..	6,048
Expenditure approved by the Hon. Minister of Finance against Unauthorized Expenditure Account		127	97	30
Refunds of revenue : Deposits Account expenditure and miscellaneous expenditure		7,505	..	7,505
Total departmental expenditure		1,181,426	279,918	901,508

APPENDICES.

APPENDIX I.—SETTLEMENT OF CROWN LANDS.

EXTRACTS FROM REPORTS OF COMMISSIONERS OF CROWN LANDS.

NORTH AUCKLAND.

(L. J. POFF, Commissioner of Crown Lands.)

The past year has not proved as favourable as the two preceding years as regards butterfat production in the North Auckland District, this position being largely due to the abnormal seasons prevailing. The autumn and winter seasons were mild, with good growth of pastures, with the result that stock came through the winter quite well.

Unfortunately a cold spring was experienced, with a heavy rainfall, and the pastures failed to make any real satisfactory growth.

This season was followed by a long dry summer spell, which rapidly dried up the pasture, providing a very poor return of hay and causing a heavy reduction in butterfat, which up to the end of December last had been well maintained on comparison with the previous year.

But for the fact that the guaranteed price for butterfat had been increased for the 1938-39 season, many dairy-farmers in the north would have experienced a serious set-back financially.

During the autumn of 1938 a serious outbreak of facial eczema in sheep and cattle resulted in heavy stock losses, and although it is not anticipated that there will be any serious repetition of this disease during the present autumn, nevertheless the low lambing percentage experienced in the north during the past year has been largely attributed to ewes affected by eczema.

Many farmers who have maintained a lambing percentage between 80 per cent. and 90 per cent. now report an average of 60 per cent. for the past season.

The extremely dry autumn of the present year has seriously affected the sale of store cattle and forced some farmers to sell at low prices.

No large blocks of Crown land have been opened during the year. The selections cover a total area of 4,793 acres, comprising areas which have been previously opened for selection or which had been reoffered.

Revenue collected during the year was slightly in excess of that of the previous year.

The continued policy of the Land-development Board of assisting individual tenants with finance for further development of their Crown holdings is proving very helpful and creating marked progress in development.

During the year all applications filed under the Mortgagors and Lessees Rehabilitation Act, 1936, not previously dealt with by Adjustment Commissions have now been adjudicated upon, and there now remain only a small number of cases which require to be reviewed by the Court of Review.

AUCKLAND.

(K. M. GRAHAM, Commissioner of Crown Lands.)

The past year has been a difficult one for the farming community, mainly due to the vagaries of the weather.

A cold spring, during which there was little growth of feed, was followed by a prolonged dry spell with the result that production did not come up to expectation. Difficulty has been experienced in saving a sufficient quantity of hay for winter feeding, and in some cases a good proportion of what was saved has had to be fed out to sustain production over the latter months of the season.

As a result of the prolonged dry weather the usual autumn top-dressing has been somewhat delayed and many settlers will be faced with the difficulty of obtaining winter grazing.

The actual returns from butterfat have generally been maintained, mainly as a result of the increased guaranteed price, and in general Crown tenants have met their obligations to the Department.

The relief granted under the Mortgagors and Lessees Rehabilitation Act, 1936, has put many of the lessees in a better position than they have been in for some years past, and Crown tenants should now be able, in addition to meeting their charges, to provide a reserve fund to tide them over an occasional bad season.

GISBORNE.

(H. L. PRIMROSE, Commissioner of Crown Lands.)

At the beginning of the year under review the whole district was experiencing the effects of the heavy February floods, and it was very unfortunate for the settlers to receive a further set-back by the floods at the end of April. These floods had the effect of silting over large areas of pastures on the flats, with the result that dairy herds had to be grazed out. Consequent on the heavy rainfall following a dry summer there was a sudden rush of feed, resulting in facial eczema being very prevalent during the late autumn. The winter was very wet and was followed by a wet spring. The hot winds of the early summer months had the effect of hardening the saturated soil, which hindered the ploughing for the maize crops. The summer has been exceptionally dry, well below the average for the past sixty years, resulting in a scarcity of feed.

An unfortunate feature of the unfavourable season was the drop in the price of wool and sheep of all classes. The wool-clips have varied throughout the district, but on an average are on a par with the past season. Due principally to the very inclement weather, the lambing percentage on the flats was considerably less than previous years, but on the hilly country the percentages would be on an average with previous seasons.

Owing to the very dry season the dairying industry has suffered considerably, production being down by about 30 per cent., whilst in addition, a number of dairy-farmers have not been able to save sufficient quantities of winter feed. A pleasing feature is that there is a marked increase in the areas under lucerne. This fodder will overcome to a considerable extent the difficulties facing the dairy-farmers in the event of such another season being experienced.

The Waikato markets still draw a large supply of sheep from this district, and, in addition, an increased number have gone to the Hawke's Bay district this year.

The dry season has been an advantage to the fruit industry, and orchardists report that there was a marked decrease in brown-spot in the peaches and nectarines.

Within recent years considerable areas of hilly and undulating country have been slipping rather badly, and with the heavy rains experienced since my last report the areas so affected are rather extensive. In some cases it has been found impossible to hold a fence-line, due to the moving nature of the country, and already numerous settlers are arranging adjustments of their respective boundaries.

Applications for revaluation under section 216 of the Land Act are now being received to an increasing degree, and it is anticipated that a fairly large number of tenants will avail themselves of this provision.

HAWKE'S BAY.

(F. R. BURNLEY, Commissioner of Crown Lands.)

The year that has just passed was one of sudden changes, and in many cases of considerable hardship. After floods in the previous February, a fairly dry spell followed, only to be broken by one of the most disastrous floods in the memory of Hawke's Bay. Anzac Day, 1938, will be known for many a day as the year of the big flood, which was caused by several days of torrential rain throughout the province, with cloudbursts in parts.

Communication with Napier was affected by the subsidence of the centre span of the concrete Waitangi Bridge, while the road to Wairoa and Gisborne was impassable for days owing to the loss of the Esk River Bridge, Nuhaka Bridge, and several other important ones on the main highway. The main Wairoa Road was carried away in places, and hundreds of slips occurred. The hill country still bears marked evidence of the extensive slipping that took place. Losses of stock and pasture were exceptionally severe, especially in the well-known Esk Valley, where hundreds of acres were silted up to a considerable depth, and homes were filled up with silt, which had to be dug out.

Following the floods came a fairly mild winter with plenty of feed, and stock generally came through very well. The prospects of a good year were somewhat dimmed by the long dry spell which followed in the summer. This affected the dairymen more than the sheep-farmers, and caused severe dust-storms in the Esk Valley.

Wool-prices were somewhat lower than last year, but, on the other hand, the clip was a much better one, the total being a record one for Hawke's Bay. Fat-stock prices dropped considerably. For instance, fat ewes in November were bringing 9s., as against 16s. the previous year.

All the rehabilitation work is now finished, except for one or two appeal cases not yet heard. The results of this relief legislation are reflected somewhat in our revenue position.

With regard to the fruit-growing industry, the season has been a particularly light one from the point of view of yield, and there was a very considerable drop in the number of cases exported. Growers this year did not suffer much damage from frosts, and there were fairly heavy crops of stone-fruit, the prices all round being fairly good.

TARANAKI.

(A. F. WATERS, Commissioner of Crown Lands.)

The autumn of 1938 was warm and humid, with an exceptional growth of grass following a hot dry spell. Unfortunately, on the better-class top-dressed pasture this surfeit of rich feed induced functional disorders in stock, resulting in a form of jaundice, commonly called "facial eczema" on account of its outward manifestation. Mature sheep were chiefly affected, but quite a number of dairy cows suffered from the same complaint. It was difficult for farmers to believe that the disorder was not caused by some infectious disease, as its onslaught was so rapid and widespread.

Lambs and stock generally did not fatten on the sappy grass. There was heavy mortality in hoggets, due to black scour, and many that survived went into the winter with weakened constitutions.

Root crops in many cases were a failure owing to stem-rot induced by the humid conditions.

The sappy grass disappeared quickly with the advent of winter frosts, leaving many farmers short of feed.

Lambing percentages were exceptionally low in the following spring, probably due to the after-effects of facial eczema and unseasonable conditions.

The spring of 1938 was cold and wet with little growth of grass and frequent heavy gales. Difficulty was experienced in haymaking owing to prolonged wet weather and many fields became overmature before they were harvested. The wet weather persisted until the middle of January, to be followed by a protracted dry spell, which continued till the end of March.

Dairy-farmers have had the advantage of guaranteed prices and are little down on their average production.

Wool-prices remain at a low level. There was a poor demand for store sheep and cattle last autumn as the facial eczema epidemic thoroughly disorganized the stock market. This year the fat-stock market seems to be upset owing to widespread drought conditions.

Reports show that ragwort is being effectively controlled on the better-class land, but is seeding freely on much neglected hill country.

The adjustments under the Mortgagors and Lessees Rehabilitation Act, 1936, were completed during the year, and as over four hundred Crown lessees in this district were dealt with it should place most of them on a sound basis.

WELLINGTON.

(H. W. C. MACKINTOSH, Commissioner of Crown Lands.)

Weather conditions throughout the year have been disappointing. The autumn and winter of 1938 were fairly mild, and stock came through to the spring in good condition. The spring and early summer proved very wet and cold, however, and this, combined with heavy winds, kept the grass back. Farmers were late in harvesting hay crops owing to wet conditions, and much of the hay saved lacked brightness. In contrast to the wetness of the early summer, the late summer and early autumn were hot and dry. The white butterfly and diamond-back moth have not been about in such numbers, and cruciferous crops have not suffered to the extent they did in late years.

Prices for cattle have been maintained, but sheep-prices, owing to the recent dry spell, show a sharp drop; in some districts ewes were approximately 10s. and lambs 3s. to 4s. below last season's values. Prices for dairy stock remain steady.

Each year an increasing area is being treated with manures, as farmers recognize more and more the value of top-dressing. It is being realized that, if pastures are to be maintained and deterioration arrested, especially on hill country, it is essential that top-dressing be resorted to. Considerable use is being made by farmers of the Unemployment Relief Scheme 4B, more especially in the northern areas of the land district. Many farms have been restored to profit by means of this scheme which, on account of lack of means of their owners, were in danger of becoming uneconomic units. Contracts under the scheme require skilled labour, and if such were more easily available it would be used more extensively.

Eight hundred and fifty lessees and licensees applied under the Mortgagors and Lessees Rehabilitation Act, 1936, to have their liabilities adjusted. Of these, 53 withdrew their applications for various reasons, leaving 797 cases to be dealt with by the Adjustment Commissions. With the exception of about 35 cases, this important work has been finalized. It is too early yet for an opinion to be formed of the effect of the adjustments, but as, in most cases, tenants have received concessions one way or another they should now be in a position to establish themselves successfully, more especially those who follow dairying for a livelihood.

Settlers in the most northern portions of the district still suffer losses amongst their sheep from depredations by pigs, in spite of strenuous efforts made to combat the pest. The pigs do most damage at nights, and as they have plenty of cover it is a difficult matter to try and exterminate them.

There is still a keen demand for land, and any areas offered that show a likelihood of a fair living are keenly sought after.

NELSON.

(P. R. WILKINSON, Commissioner of Crown Lands.)

The yearly period under review has been most disappointing for most classes of farming, and as a result returns are likely to be smaller than in previous years.

The spring and early summer were wet and cold for the most part, while high winds up until towards the end of January made farming-conditions rather difficult and disappointing. From towards the end of January to the close of the period a very exceptional dry spell was experienced. Dairy returns fell considerably, while pastures generally presented a burnt-up appearance. Orchardists will no doubt suffer considerably as a result of the unsatisfactory weather conditions experienced during the growing season, the fruit failing to mature correctly, resulting in much diminished output of export varieties. Tobacco and hop crops are likely to be light. Sheep-farmers suffered considerably, and stock will enter the winter months in low condition generally.

The revenue for the past year shows an improvement on the previous year of approximately 14 per cent.

MARLBOROUGH.

(G. I. MARTIN, Commissioner of Crown Lands.)

The past year has been a very disappointing one for all classes of farmers in this district.

Generally speaking, stock wintered well and there was an abundance of feed in spring and early summer.

However, drought conditions set in towards the end of December, and since then there have been only a few points of rain. An unusual feature of the present prolonged drought has been its extension to the Rai and Sounds portion of the district, which usually are more favourably situated as regards rainfall than the balance of Marlborough.

The abnormally dry conditions have resulted in an epidemic of fires which have destroyed many hundreds of acres of valuable scenic and protected forests in the northern part of the district.

Owing to the adverse climatic conditions, the yields from crops on light lands were very disappointing, but the heavier areas stood up to conditions much better. The yields of clover and other small seeds were generally good.

The dairy-farmer has been seriously affected by the drought conditions, and production has dropped so severely that most of the factories will have to close down much earlier than usual and a big reduction in output is anticipated.

The low prices received for fine wools and the depressed state of the market for surplus sheep have made conditions very difficult for the majority of sheep-farmers.

The prospects for orchardists were excellent early in the season, but on account of lack of moisture at the critical stage much of the fruit has not sized up, and export is estimated at fifty-two thousand cases, which is about 20 per cent. below original estimates.

It is pleasing to report that rabbits are definitely under control and on the decrease, and this improved position is principally due to the efforts of the several Rabbit Boards which have been formed during recent years.

Owing to the dry conditions it has been impossible for many settlers to provide supplementary feed for winter, and many have already been forced to break into their reserves of hay.

All applications for adjustment under the Mortgages and Lessees Rehabilitation Act, 1936, have now been disposed of, as the Court of Review has now heard all appeals.

WESTLAND.

(B. KING, Commissioner of Crown Lands.)

This district has experienced a very late warm autumn following on a very wet and cold spring and summer. As a consequence, production was hindered in the early part, and what is usually the flush of the season, but has picked up to a remarkable extent over the last three months. There is abundance of feed, and stock should be in good condition for the winter season.

Lambs generally have not come away as well as usual owing to adverse conditions prior to Christmas, and with a general lowering of prices all round settlers have suffered a reduction in income from this branch of farming.

Prices for store and forward cattle have been firm at a somewhat lower rate, and the graziers have had fairly successful sales of fat and surplus stock.

The farming community generally is making reasonable progress with guaranteed prices for butterfat, and the season must be accounted a fairly successful one.

All cases under the Mortgages and Lessees Rehabilitation Act, 1936, have now been dealt with by the Court. It has been a feature of Court proceedings that in practically every case no attack has been made on the Crown rents, which are admitted to be assessed on a basis that inflicts little hardship on the Crown lessee.

Remissions of arrears due to an accumulation over the depression period have been made in a fairly generous manner by the Adjustment Commission, and as a consequence many of the settlers have been given a new hope for the future. With these burdens removed, and a continuation of guaranteed prices for butterfat, there should be no reason why arrears should accumulate in future.

It is generally admitted that the basis of successful farming in this district is the plentiful application of lime and fertilizers to the land, and the chief factor that discourages the more general use of these essentials is the high cost of delivery on the ground, especially in the southern areas. Unless means can be found for landing fertilizers on the farms at a more reasonable figure it is hopeless to expect any great increase in the productive capacity of much of the southern area.

With the rapid extension of the Main South Road many inquiries are coming to hand regarding land for settlement at Jackson's Bay and environs. Though the provision of access to these areas must encourage closer settlement of available lands, it is necessary to remark that areas suitable for settlement in this part of the district are limited, and, in any case, no great extension of settlement may be anticipated before the land is cleared of milling-timber.

The best land has been freeholded, and suitable Crown areas are limited in extent.

In view of the undoubted interest the opening-up of this formerly isolated region will arouse in the touring public, much attention has been given to the setting-aside of scenic areas visible from and adjacent to the main route.

There has been a sustained interest in land-settlement, as evidenced by the increased number of applications for land received during the year.

CANTERBURY.

(N. C. KENSINGTON, Commissioner of Crown Lands.)

Settlers have generally had a difficult time in this district during the past year. Heavy rains in the late autumn and on through the winter made seasonal work difficult, and autumn-sown wheat suffered from the excessive wet. Following on the wet conditions a very cold and severe winter was experienced, heavy frosts were recorded with some heavy falls of snow, especially in the Mackenzie County. However, with the special care given during the trying time no heavy losses have been reported.

On the lower lands there was a good deal of mortality owing to the excessive wet conditions, with lower lambing percentages, and fat lambs off the mothers have been below the average.

Since the New Year very dry conditions have been experienced and rape and turnip crops have suffered, with corresponding difficulty in fattening lambs. The failure of rape and turnips has been most unfortunate, as there has been a very marked absence of the white butterfly this season, which

did much damage last year. The wet spring, followed by dry conditions, made abundance of grass available for hay, and this has been well saved, so that in the absence of turnips this will have to be generally depended on for winter feeding.

The spring-sown wheat and grain crops generally have turned out better than was expected, but in the Geraldine district a heavy hailstorm was experienced which caused a good deal of damage, but fortunately the storm was largely local and did not cover a wide area. The dry conditions since the New Year have been most beneficial for harvesting-operations.

The potato crops are reported to be light, and the late dry conditions have seriously affected the dairy returns.

While the settler on the low country has received a fair price for crossbred wool, the high-country pastoralist has had a bad year all round. The price offering for fine wool was practically on par with coarse wool, and with heavy expenses for mustering and general high-country costs has shown no margin of profit. Added to this difficulty has been the poor price for surplus stock, there being little demand. This may be accounted for by the failure of the rape and turnip crops on the low country and the general shortage of feed.

Irrigation is being pushed ahead in the Mid-Canterbury district, and when water is available for the large area to be served, and the irrigating of pastures is an accomplished fact over this wide area, then the demand for cross-bred sheep in place of the half-bred hill sheep now run will no doubt become more pronounced.

OTAGO.

(W. E. SHAW, Commissioner of Crown Lands.)

Climatic conditions during the year just ended have been very favourable. In the autumn the stock were generally in fine fettle, and with a mild winter they came through to the spring in good condition. The frosts were light, and heavy snowfalls were experienced only in a few isolated areas. The biggest set-back was the cold wet snap experienced in January, which rather retarded the growth of rape and root crops. The last two months were particularly dry, but while a little more rain would have been beneficial the warmth was rather welcome after the cold of January.

The grain crops throughout the whole province have given good yields, with some exceptionally heavy crops, particularly in South Otago. The potato crop, too, has over all been very good, and root crops generally have been very satisfactory except perhaps on some of the lighter land, where growth was affected by the lack of rain in February and March.

Lambs have fattened well, the proportion of second-grade lambs being very small. Sheep and cattle have kept in good healthy condition throughout the whole of the year.

The climatic conditions have suited the dairy herds and those engaged in this class of farming, although a comparatively small proportion of the total settlers have had a satisfactory year.

Taken as a whole, the fruit industry has had a fairly successful year. Winter frosts did not do any serious damage, the progressive fruit-farmer being now armed with some frost-fighting apparatus such as fire-pots and is thus able in a great degree to avoid extensive loss. Values were high early in the season, and the later drop in prices was more than offset by the result of the greater yields.

Owing to the prevailing low prices for fine wool and the difficulty of disposing of surplus stock, the year has been rather discouraging for the high-country sheep-farmer. It should be mentioned, also, that the rabbit pest has made great strides in the high country; sweetbrier, also, is gaining a hold on some of the pastoral lands, while St. John's wort is spreading on portions of the Wakatipu lands. Rabbits are also definitely on the increase in the bush country in the south.

The area in grain crops has decreased, but probably this is just as well, as in some localities, notably Central Otago, constant grain-cropping has taken its toll from the soil.

SOUTHLAND.

(T. CAGNEY, Commissioner of Crown Lands.)

Notwithstanding stormy weather of marked severity during the greater part of the summer, the year as a whole proved a successful one for farmers and production in all classes of farming was maintained.

Root crops, particularly later sowings, suffered a serious set-back as the result of the stormy weather experienced at a vital stage of the growth, and turnip crops, mainly on that account, cannot be relied on to the usual extent for winter feed.

Taking into account earlier unfavourable climatic conditions, white crops yielded surprisingly well, and the weather recovered in time to permit of successful harvesting. Difficulty was experienced in harvesting some of the heavier oat crops, which were beaten down to some extent by the earlier stormy weather.

The season was a favourable one for fescue-growers. Although rye-grass yielded well, early tests for germination were disappointing. Some small areas of huskless oats were successfully cropped, and no doubt the cropping of this seed will be further exploited.

Reports from cheese and butter factories point to the output of dairy-farms being well maintained. With the abundant growth of grass noticeable towards the end of the period and the favourable climatic conditions prevailing, a longer milking season than usual might be expected. No cases of any serious abortion or trouble otherwise in dairy herds have been reported.

Lambs generally fattened well up to the average. A disappointing fall in the sale prices of fat and freezing ewes was disclosed in earlier sales. Flocks, on the whole, appear to have come through the period in a sound and healthy condition and without any undue death rate. High-country graziers generally experienced a year free of any snow losses of stock.

The white butterfly was again in evidence in limited numbers this year, but not to any increased degree as compared with the previous year. The diamond-back moth, which caused considerable damage to turnips and other green crops last year, was very little in evidence this season.

APPENDIX II.—LAND FOR SETTLEMENTS.

SUMMARY OF THE SETTLEMENTS ESTABLISHED UPON ESTATES ACQUIRED AND DEALT WITH UNDER THE PROVISIONS OF THE LAND FOR SETTLEMENTS ACT UP TO THE 31ST MARCH, 1939.

Name of Estate.	Lease-holds.	Free-holds.	Principal Purpose for which Holdings are utilized.				Remarks as to Present Position.
<i>North Auckland.</i>							
Aponga	9	..	Dairying and grazing	Very fair.
Awanui	7	1	Dairying	Good.
Bickerstaffe	33	16	Grazing	"
Bayliss	1	..	Dairying	"
Cadman	1	..	Grazing	"
Carroll	14	11	Homes	Very fair.
Craddock	14	Homes and orchards	"
Dreadon	4	..	Run-off	Very fair.
Eccleston	11	16	Homes and grazing	Fair.
Finlayson	1	..	Grazing	"
Hetana	2	87	Homes and orchards	Very good.
Kitchener	1	12	"	Good.
Koremoa	14	..	Dairying and grazing	"
Lawry	1	..	Grazing	Very fair.
Methuen	1	29	Homes and orchards	Good.
Motutara	11	1	Dairying and grazing	Very fair.
Otorao	3	..	Dairying	Fair.
Paerata	2	..	"	Very fair.
Pakarakā	15	1	"	Good.
Parahi	9	..	Dairying and grazing	"
Prescott	3	18	Homes	"
Plumer	4	17	"	Fair.
Puketī	Grazing	"
Puni	11	..	Dairying	Good.
Remuera	30	1	"	"
Streamlands	11	2	"	"
Tangowahine	19	1	Dairying and grazing	Poor.
Tauraroa	2	..	Dairying	Fair.
Te Pua	5	1	"	Good.
Tokiri	4	..	"	Fair.
Upokonui	5	..	"	Good.
Waari	25	42	Homes and orchards	"
Waimata	15	1	Dairying	Very fair.
Waiteitei	9	2	"	Good.
Whakata	6	..	"	Very fair.
Totals	289	273					
<i>Auckland.</i>							
Apata	5	3	Dairying	Good.
Balachraggan	13	13	"	Very good.
Bushmere	2	..	"	Satisfactory.
Clifford	8	1	"	Good.
Delaney	1	..	Home	"
Fencourt	6	41	Dairying and mixed farming	Very good.
Galatea	18	..	Dairying	Good.
Gorton	10	..	Dairying and mixed farming	Very good.
Hannon	2	..	"	Good.
Hereford Park	2	..	Dairying	Unsatisfactory.
Hikuai	19	1	Dairying and mixed farming	Good.
Horahia	6	..	"	"
Horahora	4	6	"	"
Kaipaki	4	..	"	"
Karapiro	5	14	"	Very good.
Kopuku	3	1	"	Fair.
Kopuku (2)	3	2	"	"
Mangaotama	3	1	"	Very good.
Mangakura	6	..	"	"
Mangapouri	16	"	"
Mangateparu	48	8	"	"
Mangawhero	6	22	"	"
Matamata	46	288	"	"
Matuku	10	1	"	"
Morgan	2	2	Dairying	Satisfactory.
Nelson	3	..	"	"
Ngahinepouri	2	2	"	Very good.
Norwegians	2	1	"	Satisfactory.
Nolan	4	1	"	"
Ohauiti	9	3	"	Unsatisfactory.
Okauia	4	12	"	Fair.
Omehue	10	..	"	Good.
Opouriao	25	75	"	Very good.
Orini	2	..	"	"
Orongo	33	3	"	Fair, improving.
Otamarakau	7	..	"	Very good.
Otway	8	10	"	"

SUMMARY OF THE SETTLEMENTS ESTABLISHED UPON ESTATES ACQUIRED AND DEALT WITH UNDER THE PROVISIONS OF THE LAND FOR SETTLEMENTS ACT UP TO THE 31ST MARCH, 1939—continued.

Name of Estate.	Lease-holds.	Free-holds.	Principal Purpose for which Holdings are utilized.	Remarks as to Present Position.
<i>Auckland—continued.</i>				
Pakarau	12	12	Dairying	Very Good.
Pukemapou	9	2	"	"
Puketarata	5	..	"	Good.
Puahue	14	7	Dairying and mixed farming	"
Rangiatea	3	24	Dairying	Very good.
Rangitaiki	7	1	Dairying, small farming	"
Reporoa	95	20	Dairying and grazing	Good.
Rewi	3	9	Dairying	Very good.
Reynolds	20	5	"	Good to doubtful.
Rockburn	1	..	"	Fair.
Rotomanuka	1	..	"	Good.
Selwyn	46	208	Dairying and mixed farming	Very good.
Tahaia	9	2	Dairying	"
Tainui	2	1	Grazing	Fair.
Tairua	18	8	Residential and farmlets	Good.
Taniwha	10	2	Dairying	"
Tangao	1	..	"	Fair.
Tapapa	6	4	"	Very good.
Tautari	33	13	Business and residence	Fair to doubtful.
Teasdale	7	93	Residential and farmlets	Very good.
Te Miro	28	7	Dairying and grazing	Fair.
Te Ngaroa	2	..	Dairying	"
Te Poi	2	..	"	Good.
Waiare	4	..	"	"
Waimana	17	26	Dairying and mixed farming	Very good.
Wairakau	13	1	"	"
Walters	3	..	"	"
Waitakaruru	12	6	Dairying, grazing	"
Whatawhata	3	..	Dairying	Good.
Whitehall	4	15	Dairying and grazing	Very good.
Totals	731	993		
<i>Gisborne.</i>				
Apanui	7	1	Dairying	Good.
Ardkeen	14	..	Pastoral	Fair.
Clydebank	2	5	Pastoral and dairying	Good.
Glencoe	6	..	Dairying	"
Homebush	13	..	Dairying and agricultural	Good.
Hukutaia	18	4	Dairying	Very good.
Kanakanaia	7	1	Pastoral	Good.
Ngatapa	22	5	"	"
Ohuka	11	..	"	Poor.
Paremata	7	..	Dairying and pastoral	Fair.
Pouparae	3	6	Agricultural	Good.
Repongaere	10	1	Dairying and pastoral	Fair.
Rere	2	..	Dairying	"
Ruangarehu	2	..	"	"
Te Arai	43	17	Dairying and pastoral	Good.
Te Wera	Pastoral	Fair.
Waimarie	8	9	Dairying and agricultural	Good.
Wharekaka	13	..	Dairying	Poor.
Wigan	13	7	Dairying and pastoral	Good.
Willows	12	9	"	"
Totals	213	65		
<i>Hawke's Bay.</i>				
Argyll	36	28	Agricultural and pastoral	Very Good.
Awamata	6	..	Dairying	Fair.
Beattie	5	..	Pastoral	Good.
Clydebank	12	4	"	"
Corby	4	..	Mixed farming	Fair.
Coyne	1	..	"	"
Crownthorpe	18	..	Pastoral	Good.
Elsthorpe	29	22	"	Very good.
Forest Gate	16	13	Agricultural and pastoral	Good.
Glengarry	28	..	Dairying	Fair.
Gwas	10	1	Pastoral	Poor.
Hatuma	46	35	Agricultural and pastoral	Very good.
Kakariki	Mixed farming by Department	"
Kumeroa	14	3	Agricultural, pastoral, and dairying	Very good.
Lindsay	50	23	Mixed farming	"
Mahora	19	16	"	"
Manga-a-toro	16	13	Agricultural and pastoral	"
Mangatahi	20	4	"	"
Marakeke	17	..	Mixed farming	Fair.
Omana	9	1	Dairying	Good.
Otamauri	15	2	Agricultural and pastoral	"
Parinui	3	..	Mixed farming	Fair.

SUMMARY OF THE SETTLEMENTS ESTABLISHED UPON ESTATES ACQUIRED AND DEALT WITH UNDER THE
PROVISIONS OF THE LAND FOR SETTLEMENTS ACT UP TO THE 31ST MARCH, 1939—*continued.*

Name of Estate.	Lease-holds.	Free-holds.	Principal Purpose for which Holdings are utilized.	Remarks as to Present Position.
<i>Hawke's Bay—continued.</i>				
Pourerere	6	1	Agricultural and pastoral	Good.
Pukahu	2	..	Fruit	Fair.
Raunati	28	5	Pastoral and dairying
Raureka	10	9	Dairying and fruit-culture	Very good.
Rissington	5	..	Pastoral	Good.
Rylands	5	..	"	Poor.
Sherenden	20	2	Mostly pastoral	Very good.
Springhill	17	1	"
Te Kaihi	3	..	Mixed farming	Fair."
Te Kura	11	..	Dairying
Te Mata	10	3	Fruit farming	Poor.
Tongoio	12	..	Mostly pastoral	Fair.
Tomoana	2	12	Fruit and dairying	Very good.
Waihau	17	4	Mostly pastoral	Good.
Waipuka	1	..	Pastoral	Fair.
Watea	10	..	Mixed farming	"
Wilder	4	..	Pastoral	"
Woodlands	8	1	Dairying and agricultural	"
Miscellaneous	1	2	Dwellings
Totals	546	205		
<i>Taranaki.</i>				
Araheke	3	..	Dairying	Fair.
Clandon	7	..	"	Very good.
Croydon	6	1	"	Good.
Hawke	"	Very good.
Huatoki	30	6	Residential, small farming	Fair.
Huia	6	..	Mixed farming	"
Huinga	7	3	Dairying and mixed farming	Good.
Karu	4	..	Mixed farming	Satisfactory.
Katikara	2	1	Dairying	Very good.
Kohura	11	..	Mixed farming	Fair.
Kota	7	..	"	Good.
Mana	1	..	Grazing	Fair.
Mangamaire	1	..	"	Satisfactory.
Marco	2	..	Mixed farming	Fair.
Matane	1	Dairying	Freehold; very good.
Ngutu	1	..	Mixed farming	Improving.
Okahu	1	..	Dairying	Fair.
Parkes	7	..	"	Very good.
Piu	1	..	Mixed farming	Fair.
Rahu	"	Abandoned.
Ratapiko	3	1	Dairying and mixed farming	Good.
Spotswood	7	39	Residential and small farming	Very good.
Taitama	6	..	Mixed farming	Good.
Tariki	7	1	Dairying	Very good.
Tawhiwhi	8	..	Mixed farming	Fair.
Tokaora	2	14	Dairying	Very good.
Tututawa	3	..	Dairying and grazing	Good.
Totals	133	67		
<i>Wellington.</i>				
Ahiaruhe	10	..	Dairying	Good to fair.
Akitio	6	..	Grazing sheep and cattle	Good.
Almadale	8	..	Dairying	Lower good, upper fair.
Aorangi	15	27	"	Good.
Arawhata	2	..	Dairying and a few sheep	Very fair to fair.
Armstrong	1	..	Dairying	Good.
Bailey	1	..	"	"
Bartholomew	6	..	"	Improving.
Benge	1	..	"	Fair to poor.
Braemore	4	..	Pastoral	Good.
Brown	1	..	Dairying	"
Bruce	1	..	"	Fair to poor.
Bryce	3	..	"	Good.
Callender	1	..	Dairying and a few sheep	Fair.
Carrington	33	3	"	"
Cherry Grove	3	..	Dairying	"
Cloverlea	17	..	Dairying and residential	Good.
Corliss	1	..	Dairying	"
Coyle	1	..	"	Fair.
Currie	2	..	"	Good to fair.
Dawbin	1	..	Dairying and residential	Good.
Devonshire	1	..	"	"
Dixon	1	..	"	"
Dyer	35	12	Dairying, cropping, sheep	Fair.
Eaglesham	5	..	Dairying and grazing	Very good.
Epuni Hamlet	13	32	Mixed and garden	Good.
Evans	1	..	Dairying and a few sheep	Fair.

SUMMARY OF THE SETTLEMENTS ESTABLISHED UPON ESTATES ACQUIRED AND DEALT WITH UNDER THE PROVISIONS OF THE LAND FOR SETTLEMENTS ACT UP TO THE 31ST MARCH, 1939—*continued*.

Name of Estate.	Lease-holds.	Free-holds.	Principal Purpose for which Holdings are utilized.	Remarks as to Present Position.
<i>Wellington—continued.</i>				
Fairfield	7	1	Dairying	Fair.
Falloon	6	..	Dairying and a few sheep	Good to very fair.
Gee	1	..	Dairying	Fair.
Glasspole	1	..	"	Poor.
Gower	2	..	"	Fair.
Graham	1	..	"	"
Greystoke	11	1	"	Good.
Greves	1	..	Dairying and a few sheep	Fair.
Hall-Jones	8	42	Gardening	Good.
Hammond	1	..	Dairying	Fair.
Hawtrej	30	66	Residential	Doubtful.
Hardie	1	..	Dairying	Good.
Haunui No. 1	8	..	"	"
Haunui No. 2	7	..	"	"
Harper	1	..	"	"
Heatherlea	17	10	"	"
Heretaunga	12	114	Residential	"
Heights	2	..	Sheep and dry cattle	Fair to poor.
Hill	1	..	Dairying and a few sheep	Fair.
Horrobin	1	..	Mixed	Fair to poor.
Johnson	1	..	Grazing	Improving.
Kairanga	11	..	Dairying	Good.
Kiwitea	1	..	"	"
Kopane	14	..	"	"
Kuku	4	..	Mixed	"
Langdale	7	18	Grazing	"
Langley-Purdom	1	..	Dairying	"
Lean	1	..	Residential	"
Lewis	1	..	Dairying	Fair to poor.
Linton	5	..	"	Good.
Little	1	..	Sheep and dry cattle	Good to poor.
Littler	1	Dairying	Good.
Loughnan	25	4	Residential	Little demand.
Longbush and Mahupuku	13	9	Mixed	Good.
Makowai and extension	26	..	Dairying	Fair to improving.
Makopua	2	..	"	Improving.
Marama-a-mau	6	..	"	Fair.
Mangawhata	7	"	Good.
Marshall	1	..	"	Fair.
Maungaraki	17	4	Residential	Poor.
Mataikona	5	..	Grazing	Fair to poor.
Matamua	2	..	Dairying	Poor.
Melling	2	..	Residential	Good.
Moroa	19	..	Dairying	Fair.
Motukat	3	..	Grazing	"
Muhunoa	2	..	Dairying	Fair to poor.
McDonnell	1	..	"	Fair.
McKenzie	1	..	"	Good.
McLean	1	..	"	"
Neligan	1	..	"	Fair to good.
Nesdale No. 1	1	..	Dairying and pastoral	Fair.
Nesdale No. 2	1	..	"	"
Ngahape	6	..	Grazing	"
Ngakaroro	2	..	Dairying	"
Ngarara	5	..	"	Good.
Normandale	17	31	Mixed	Poor.
Ohakea	3	14	Dairying	Fair.
Olliver	2	..	"	"
Olver	1	..	Grazing	No improvement.
Omapu	4	..	Dairying	Good.
Oroua	2	..	"	Fair.
Osborne	5	..	"	Good.
Otahome	2	..	Grazing	Very fair.
Oturoa	7	..	Dairying	Failing.
Owenga	18	3	Residential	Fair.
Paa Creek	1	..	Dairying	Good.
Paparangi	17	19	Residential	Fair to poor.
Paramu	1	..	Grazing	Poor.
Perham	1	..	Mixed	Fair.
Phillips	4	..	Dairying	Very good.
Pihautea	26	2	"	Good.
Pitt	5	Gardening	Fair.
Pohehe	1	..	Dairying, sheep, and cattle	Good.
Poroporo	15	2	Mixed	Poor.
Pukekoa	9	..	Dairying	Fair.
Pukenamu and extension	8	..	"	Fair to poor.
Puketoi	8	2	Grazing, sheep and cattle	Good.
Putorino	14	..	Dairying	Fair.
Quillinan	1	..	"	Good.
Raumacwa	3	..	"	Fair.
Ruatangata	3	..	"	Good.

SUMMARY OF THE SETTLEMENTS ESTABLISHED UPON ESTATES ACQUIRED AND DEALT WITH UNDER THE
PROVISIONS OF THE LAND FOR SETTLEMENTS ACT UP TO THE 31ST MARCH, 1939—*continued.*

Name of Estate.	Lease-holds.	Free-holds.	Principal Purpose for which Holdings are utilized.					Remarks as to Present Position.
<i>Wellington—continued.</i>								
Sandilands	1	Dairying	Fair.
Saxon	1	..	"	Fair to good.
Soland	"	Good.
Stanley	1	..	"	Fair : improving.
Stokes	1	..	"	Fair.
Tablelands and Hikiwera	11	6	Grazing	Good.
Taikorea	5	..	Dairying	Fair.
Tauherenikau	1	..	Mixed	"
Taumaihi	2	1	Residential	Poor.
Tapuae	2	..	Grazing	Satisfactory.
Tawaha	24	1	Mixed	Good to fair.
Te Matua	4	11	Dairying	Good.
Te Ore Ore	8	..	Dairying and cropping	Good to fair.
Te Whiti	6	..	Dairying	Good.
Tikotu	3	..	"	Fair.
Tiraumea	16	..	Grazing.	Very fair to poor.
Tupurupuru	3	..	"	Good.
Tuturumuri	12	..	"	Good to fair.
Waddington	13	3	Gardening	Poor.
Wahren	1	..	Dairying	Fair.
Waihora	3	..	Mixed	Very fair.
Waitawa	3	..	Dairying	Good.
Waterson	2	..	Dairying and pastoral	Fair : improving.
Westella	12	..	Dairying	Good.
Westmere	9	..	Mixed	Very fair.
White	1	..	Dairying	Good.
Wilford	62	142	Residential	"
Woulfe	1	..	Dairying	"
Wright	1	"	"
Youle	1	..	"	"
Totals ..	863	595						
<i>Nelson.</i>								
Blue Glen	1	..	Grazing	Poor.
Braeburn	17	6	Mixed farming	Good.
Glenrae	1	..	"	"
Golden Downs	"	"
Homesteads	1	..	Grazing	"
Lake	5	1	"	Fair.
Maruia	10	..	Grazing and dairying	"
Matakitaki	1	..	Grazing	"
Palmer	1	..	Mixed farming	"
Spittal	1	..	Dairying	"
Tutaki	4	1	Grazing	Poor.
Waimaunga	1	..	Dairying	"
Walker	1	..	"	Good.
Wangapeka	14	3	Mixed farming	"
Totals ..	58	11						
<i>Marlborough.</i>								
Alberton	3	..	Agricultural and dairying	Poor.
Blind River	18	..	Agricultural and sheep	Very good.
Bomford	1	..	Agriculture	Poor.
Erina	10	2	Sheep	Fair.
Fernleigh	6	..	Dairying	"
Flaxbourne	129	17	Agricultural and pastoral	Very good.
Goat Hills	3	..	Sheep	Fair.
Hillersden	51	9	"	Good.
Hillersden Bush	1	..	"	Poor.
Linkwaterdale	5	..	Agricultural and dairying	Fair.
Lynton Downs	11	..	Sheep	"
Moorlands	6	..	Agriculture	"
Neville	1	1	"	"
Northbank	9	..	Sheep	Good.
Omaka	14	..	Sheep, agricultural, and dairying	"
Puhi Puhi	2	..	Sheep	"
Rainford	11	..	Dairying	"
Richmond Brook	12	..	Sheep	Very good.
Starborough	162	30	Agricultural and pastoral	"
Waipapa	4	..	Sheep	Good.
Warnock	2	..	Dairying	Poor.
Wither	17	5	Sheep and poultry	Fair.
Totals ..	478	64						
<i>Westland.</i>								
Kokatahi	9	..	Dairying and grazing	Highly satisfactory.
Poerua	23	7	"	Satisfactory.
Raupo	4	..	"	"
Runanga	1	..	Residential	"
Totals ..	37	7						

SUMMARY OF THE SETTLEMENTS ESTABLISHED UPON ESTATES ACQUIRED AND DEALT WITH UNDER THE
PROVISIONS OF THE LAND FOR SETTLEMENTS ACT UP TO THE 31ST MARCH, 1939 - *continued.*

Name of Estate.	Lease-holds.	Free-holds.	Principal Purpose for which Holdings are utilized.	Remarks as to Present Position.
<i>Canterbury.</i>				
Acton	4	..	Mixed farming	Areas recently increased should now succeed.
Albury	77	4	Sheep-farming and grain-growing	Very good.
Allanholme	19	Fair.
Annan	42	6	Mixed farming and grazing	Well established.
Ashley Gorge	7	3	Dairy-farming and grazing
Ashton	6	..	Mixed farming	Fair; holdings too small; land dirty.
Ashwick	8	..	Sheep-farming and grain-growing	Fair.
Avenel	17	..	Mixed farming	Satisfactory.
Avenel Extension	12	Generally satisfactory.
Avonhead	17	2	Small farming	Still uncertain.
Avonhead No. 2	17	2
Aylesbury	6	..	Mixed farming	Good. "
Bankfield	9	..	Mixed farming and grain-growing	Fair.
Beach	10	..	Mixed farming	Fair; holdings too small.
Bourndale	10	..	Mixed farming and grain-growing	Fair.
Braco	2	12	Market-gardening	Well established.
Brinklands	2	Dairying and mixed farming	Under manager.
Broadfields	4	..	Mixed grain-growing	Still uncertain.
Brookdale	14	..	Mixed farming	Uncertain; holdings too small.
Bruce	4	Fair.
Buckley	3
Buddo	9	6	Workers' dwellings
Burke's Homestead	1	..	Homestead-site
Chamberlain	19	2	Sheep-farming and grain-growing	Fair.
Clandeboyce	11	..	Dairy-farming and grain-growing	Very Fair.
Clandeboyce No. 2	6	Fair.
Claremont	11	..	Sheep-farming and grain-growing	Poor to fair.
Clayton	6	Good.
Clunes	8	..	Mixed farming	Fair; cropping instead of dairying.
Clunes Extension	1
Coldstream	11	..	Mixed farming and grain growing	Fair; holdings too small.
Cooper's Creek	1	..	Sheep-farming	Fair.
Copland	2	..	Sheep, dairying, and grain-growing
Craigmore	9	..	Mixed farming	Poor to fair.
Cricklewood	10
Culverden	51	22	Mixed farming and grazing	Good.
Douglas	36	..	Mixed farming and grain-growing	Fair.
Doyleston	5	..	Mixed farming	Uncertain yet.
Drayton	13	7	Agricultural	Improving.
Dromore	2	..	Mixed farming and grazing	Areas and rentals recently adjusted; should now succeed.
Eccleston	4	..	Sheep-farming and grain-growing	Good.
Epworth	2	Now freehold
Finlay Downs	4	..	Mixed farming and grain-growing	Poor to fair.
Four Peaks	8	..	Sheep-farming and grain-growing	Good.
Fyvie	4	1	Mixed farming	Not satisfactory.
Glenmark	27	5	Mixed farming and grazing	Good.
Glentanner	Homestead-site	Fair.
Gorge Road	3	18	Worker's home
Grange	3	1	Dairying and grain-growing	Fair; holdings too small.
Hadlow	1	..	Mixed farming	Fair.
Hawthorne	9	Satisfactory; holdings too small.
Hei Hei	11	6	Poultry-farming, &c.	Uncertain yet.
Hekeao	10	7	Mixed farming	Satisfactory.
Hewitt	1	..	Homestead-site
Highbank	69	13	Mixed farming	Good.
Hillboro	3	..	Mixed farming and grain-growing	Poor to fair.
Homebrook	16	..	Mixed farming	Good.
Hornby	16	7	Agricultural and gardening	Fair.
Horsley Down	7	23	Mixed farming	Well established.
Isleworth	18	..	Mixed grain-growing	Uncertain.
Jungle	2	..	Dairy-farming	Fair.
Kaimahi	3	10	Satisfactory.
Kakahu	4	1	Workers' homes and gardening	Poor to fair.
Kapua	12	..	Mixed farming and grazing	Good.
Kaputohe	5	9	Market-gardening and dairying
Keith	1	Workers' homes and gardening	Satisfactory.
Kereta	4	..	Mixed farming	Good.
Kinloch	30	2	Dairying and sheep-grazing	Well established.
Kohika	16	..	Mixed farming and grazing	Good.
Kohika No. 2	4	..	Mixed farming	Poor to fair.
Kowhatu	4	Fair.
Ladbrooks	14
Lambrook	6

SUMMARY OF THE SETTLEMENTS ESTABLISHED UPON ESTATES ACQUIRED AND DEALT WITH UNDER THE
PROVISIONS OF THE LAND FOR SETTLEMENTS ACT UP TO THE 31st MARCH, 1939—*continued.*

Name of Estate.	Lease-holds.	Free-holds.	Principal Purpose for which Holdings are utilized.	Remarks as to Present Position.
<i>Canterbury—continued.</i>				
Lansdown	8	1	Mixed farming and grain-growing	Fair.
Lauriston	4	1	Mixed grain-growing	Fair; too much cropping.
Leeston	5	1	Agricultural	Well established.
Lees Valley	8	..	Sheep-farming	Position difficult; improving.
Lyndhurst	18	..	Mixed farming	Satisfactory.
Lyndon	7	1	"	Well established.
Lyndon No. 2	9	..	Mixed farming and grazing	"
McGregor	1	..	"	Very poor.
Marawiti	12	1	"	Good.
Maytown	7	3	Mixed farming and dairying	"
Mead	21	1	Mixed farming and grazing	Well established.
Meadows	14	..	Mixed farming and grain-growing	Fair.
Milford	4	..	Mixed farming	"
Mills	21	..	Mixed farming and dairying	Fair to good.
Moanaroa	3	..	Mixed farming	Fair; improving.
Montford	7	..	Mixed farming and grazing	Improving.
Morice	28	3	Dairying and grass-seed growing	Satisfactory.
Morten	15	3	Poultry, &c.	Uncertain yet.
Mount Nessing	11	..	Sheep-farming and grain-growing	Fair.
New Park	7	..	Mixed farming	Fair; holdings too small.
Oakwood	5	..	Mixed farming and grain-growing	Fair.
Ohapi	6	..	Mixed farming	Good.
Omih	Homestead-site	"
Orakipaon	26	1	Market-gardening	Good.
Otaio	9	..	Mixed farming	"
Otarakaro	7	Small farming and dairying	Well established.
Papaka	9	..	Market-gardening	Good.
Pareora	26	2	Mixed farming	"
Pareora No. 2	26	7	"	"
Patoa	1	3	Grazing and small farming	Satisfactory.
Pawaho	7	18	Market-gardening	"
Peaks	9	3	Mixed farming	"
Puhuka	9	1	Workers' homes	"
Punaroa	12	5	Dairying, sheep-farming, and grain-growing	Good.
Raincliff	1	..	Sheep-farming	Fair.
Rakitairi	20	2	Mixed farming and grain-growing	Fair to good.
Rapuawai	5	..	"	Fair.
Rautawiri	6	..	Mixed farming, grain-growing, and small farming	Good.
Riverina	3	..	Mixed farming	Fair; holdings too small.
Roimata	6	23	Workers' homes	"
Rosebrook	11	3	Small farming and dairying	Fair to good.
Rosewill	151	11	Sheep-farming and grain-growing	Good.
Ruapuna No. 2	15	..	Mixed farming	Satisfactory.
Seargill	9	..	Mixed farming and grazing	"
Scotston	2	..	Mixed farming	Fair; improving.
Seafield	6	..	"	Fair; holdings too small.
Seaforth	7	..	Small farming and dairying	Fair.
Sherwood Downs	30	1	Sheep-farming and grain-growing	Poor to fair.
Springwell	6	..	Mixed farming and grain-growing	Fair to good.
Stoke	7	..	Mixed farming	Good.
Strathmore	3	..	"	Fair.
Studholme Junction	4	..	Small farming and dairying	Good.
Takitu	5	..	Sheep-farming	"
Tamai	8	33	Workers' homes	Satisfactory.
Tara	9	1	Sheep-farming and grain-growing	Good.
Tarawahi	2	26	Workers' homes	Satisfactory.
Teschemaker	14	..	Mixed farming and grain-growing	Poor to fair.
Timaunga	16	..	Mixed farming	Fair to good.
Timaunga Extension	6	..	"	Fair.
Tripp	23	..	Sheep-farming and grain-growing	Poor to fair.
Valverde	10	..	Mixed farming	Holdings too small; land dirty.
Waiapi	11	4	Sheep-farming and grain-growing	Good.
Waikakahi	176	27	"	"
Waimate	34	..	Sheep-farming and fruit and grain	Poor to fair.
Wairere	7	..	Mixed farming	Fair; holdings too small.
Waitohi Peaks	8	..	Sheep-farming	Improving.
Welburn	6	..	Mixed farming and dairying	Uncertain.
Wharenui	11	14	Workers' homes	Well established.
Winchester	10	..	Sheep-farming and grain-growing	Fair.
Woodlau	4	..	Mixed farming and grazing	Uncertain yet.
Totals	1,816	381		

SUMMARY OF THE SETTLEMENTS ESTABLISHED UPON ESTATES ACQUIRED AND DEALT WITH UNDER THE PROVISIONS OF THE LAND FOR SETTLEMENTS ACT UP TO THE 31ST MARCH, 1939—*continued.*

Name of Estate.	Leaseholds.	Freeholds.	Principal Purpose for which Holdings are utilized.				Remarks as to Present Position.
<i>Otago.</i>							
Airedale	10	1	Dairying and general	Good.
Ardgowan	60	12	"	"
Atnmore	5	..	Mixed	Fair.
Arthurton	4	..	Grazing	Good.
Aviemore	1	..	"	"
Awamoa	1	1	Mixed	"
Barnego	19	5	Dairying and general	"
Bellamy	13	..	Grazing	Poor.
Clareview	5	..	Dairying and general	Good.
Clifton	8	..	General	Fair.
Conical Hills ..	45	2	Grazing and general	Poor.
Crosshill	5	1	Mixed	Fair.
Croucher	1	..	"	Good.
Dalmain	3	..	Grazing	Fair.
Downs	8	..	Mixed	Good.
Duncan	3	6	Dairying	Poor.
Earnsclough ..	24	2	Fruit	Fair.
Elderslie No. 1 ..	31	6	General	Good.
Elderslie No. 2 ..	16	..	"	Very good.
Galloway	11	1	Fruit and homestead-sites	Very fair.
Gladbrook	46	3	Dairying	Fair.
Glen	4	..	Mixed	"
Greenfield	35	8	"	Good.
Hilderthorpe ..	19	..	General and workers' homes	Fair.
Hyde	2	4	Mixed and general	Good.
Janefield	19	3	Dairying and fruit	"
Kauroo Hills ..	43	3	General	"
Kelso	3	..	Dairying	"
Kurow	11	3	Dairying and general	Only fair.
Lakeview	1	..	General	Good.
Macrewhenna ..	77	1	"	Very good.
Makaraco	32	1	"	Very fair.
Makaraco Extension ..	3	..	"	Poor.
Manuhirikia ..	9	1	General, with irrigation	Very fair.
Maraeweka	8	..	General	"
Matakanui	3	..	General and grazing	Good.
Meadowbank ..	11	..	General	Very good.
Melville Park ..	6	..	Dairying and mixed	Poor.
Momona	4	10	Dairying	Very good.
Murrayfield ..	2	..	Mixed	Good.
Oakleigh	1	..	"	Only fair.
Otanomomo	25	1	Dairying	Good.
Otekaike	65	2	Mixed	Fair.
Plunket	18	2	"	Good.
Pomahaka	23	3	"	Very fair.
Poplar Grove ..	21	2	Dairying	Good.
Pukeawa	14	2	Mixed	"
Pukenui	6	..	"	"
Puketapu	5	6	Dairying	"
Rockford	4	..	Mixed	"
Rosebery	15	..	Grazing and general	"
Rugged Ridges ..	1	..	Grazing	Very fair.
Steward	50	5	Mixed	Good.
St. Helens	3	..	General	Very fair.
Tahawai	7	1	Dairying	Good.
Tapanui	7	..	General	"
Taumata	8	1	Mixed	"
Teaneraki	23	..	Dairying	Very fair.
Te Puke	4	..	Mixed	Good.
Teviot	25	1	Grazing	Fair.
Tilverstowe ..	7	..	Mixed	"
Tokarahi	75	2	"	Good.
Tokoiti	4	..	"	"
Totara	27	..	"	"
Wairuna	11	..	"	Fair.
Waitahuna No. 1 ..	1	1	"	"
Waitahuna No. 2 ..	6	1	"	Poor.
Westcott	7	..	"	"
Wilden	13	..	Mixed agricultural and pastoral	Good.
Windsor Park No. 1 ..	36	2	Mixed	Very good.
Windsor Park No. 2 ..	9	1	"	"
Totals ..	1,132	107					

SUMMARY OF THE SETTLEMENTS ESTABLISHED UPON ESTATES ACQUIRED AND DEALT WITH UNDER THE PROVISIONS OF THE LAND FOR SETTLEMENTS ACT UP TO THE 31ST MARCH, 1939—continued.

Name of Estate.	Lease-holds.	Free-holds.	Principal Purpose for which Holdings are utilized.	Remarks as to Present Position.
<i>Southland.</i>				
Allenby	5	..	Dairying	Fair.
Ardlussa	5	..	Pastoral	Very poor.
Beaumont	10	2	Mixed farming
Brydone	2	..	Dairying	Good.
Campbell	5	..	Mixed farming
Crichton Park ..	4	2	Fair.
Edendale	94	60	Dairying	Very good.
Ermedale	10	3	Mixed farming	Good.
Fern Hill	6
Fortification Hill	6	Fair.
Glenham	28	16	Very good.
Knowsley Park ..	9	Fair.
Lambert	1	..	Dairying
Lamont	6	Good.
Lora	3	..	Mixed farming
McCallum	4	..	Dairying	Fair.
Maori Hill	16	5	Mixed farming	Good.
Merrivale	44	15
Merrivale No. 1 ..	9	Fair.
Merrivale No. 2 ..	7
Monte Cristo ..	4	..	Dairying	Good.
Otahu	5	3	Mixed farming
Ringway	4	3	Fair.
Simpson	1	Poor.
Stalker	8	1	Dairying	Very good.
Strathvale	9
Tamatea	7	Good.
Teihoka	2	..	Mixed farming
Te Wae Wae	4	..	Dairying
Waiarikiki	7	..	Mixed farming	Fair.
Waikiwi Town ..	22	35	Suburban building-sites
Totals	347	145		

EXTRACTS FROM REPORTS OF COMMISSIONERS OF CROWN LANDS.
NORTH AUCKLAND.

(L. J. POFF, Commissioner of Crown Lands.)

During the year no new estates were purchased, but steady progress is being maintained by settlers on estates purchased in previous years.

Adjustments consequent upon applications made under the provisions of the Mortgagors and Lessees Rehabilitation Act, 1936, have now been completed with the exception of a small number of cases requiring to be dealt with by the Court of Review.

The year has not generally proved to be a good one either for the dairy-farmer or for the grazier tenant, the former receiving a fall in butterfat-production, due to unfavourable seasons, and the latter a fall in market prices for wool, sheep, and cattle.

AUCKLAND.

(K. M. GRAHAM, Commissioner of Crown Lands.)

No new purchases of land or estates for settlement purposes was made during the year.

Despite the difficult conditions which have had to be met, the settlers on our settlement lands are on the whole making good progress, and on the newer blocks progressive work in the effecting of improvements continues to be carried out which will lead up to satisfactory establishment in each case as time progresses.

GISBORNE.

(H. L. PRIMROSE, Commissioner of Crown Lands.)

No new areas have been purchased during the year. The Te Wera Estate continues to be farmed by this Department, with very satisfactory results. The time has not yet arrived for the cutting-up of this station into separate farming allotments.

On the older settlements the majority of the settlers have established themselves and any reductions made as a result of investigations under the Mortgagors and Lessees Rehabilitation Act were very slight, but in the case of those settlements purchased for the settlement of discharged soldiers the writings-off were considerable.

The settlers on the Glencoe and Repongaere Settlements were seriously affected by the floods of last autumn, so much so that one of the settlers was forced to resow his pastures three times after three successive floods in March, April, and July.

During the year appraisements have been made of seven leases in the Kanakanaia Settlement for the purpose of renewal of the leases. In addition, thirty-five leases in the Te Arai Settlement are under similar action.

HAWKE'S BAY.

(F. R. BURNLEY, Commissioner of Crown Lands.)

Many of the early renewable leases are due to expire at an early date, and valuations for renewal purposes are in hand.

A number of applications have been made for revaluations under section 216 of the Land Act, 1924, chiefly from settlers who did not apply under the Rehabilitation Act and who now wish to have their rents adjusted.

No new purchases were made during the year, and most of the settlers seem to be fairly well established.

TARANAKI.

(A. F. WATERS, Commissioner of Crown Lands.)

No properties have been acquired under the Land for Settlements Act during the year.

Tapuwae Estate, which was being developed and farmed under Part II of the Land Laws Amendment Act, 1929, has been taken over by the Land Development Branch and is being developed and farmed under the small-farms scheme.

Land-for-settlement lessees, in common with others, have taken advantage of the opportunity to have their cases reviewed by the Adjustment Commissions under the Mortgagors and Lessees Rehabilitation Act. The investigations have shown that the values of dairy-farms in flat and easy country are fairly well sustained, but heavy reductions have been necessary in the case of sheep-farms in hilly country.

WELLINGTON.

(H. W. C. MACKINTOSH, Commissioner of Crown Lands.)

No estates were acquired under the Land for Settlements Act during the year. The majority of tenants on settlement lands follow dairying, and have had a fair year.

A large number of settlement tenants applied for relief under the Mortgagors and Tenants Rehabilitation Act, and their cases, with the exception of a few, have been finalized. It is too early yet to judge the effect of the adjustments, but as most tenants received concessions of some kind, they should be on the road to successful establishment.

NELSON.

(P. R. WILKINSON, Commissioner of Crown Lands.)

No further areas were purchased for closer-settlement purposes during the year under review. Some settlers on the already established settlements made application for relief under the Mortgagors and Lessees Rehabilitation Act, 1936, but the proportion of applicants to settlers was small, so that it can be assumed that they are all now more or less well established on their holdings. The majority of settlements are sheep-raising propositions, and, although the season has been rather exceptional, on the whole stock has come through fairly well, but the latter end of the season under drought conditions will leave the stock in rather low condition for the winter months. Charges have been fairly well met, and no difficulty should be experienced in the future in that direction.

MARLBOROUGH.

(G. I. MARTIN, Commissioner of Crown Lands.)

No new estates were purchased in this district during the past year.

A considerable percentage of lands-for-settlement lessees applied for relief under the Mortgagors and Lessees Rehabilitation Act, and these applications have now all been finalized by the Court of Review.

Five of the older-established settlements did not reveal any great difficulties as regards rents, but as regards the balance reductions in rent were granted ranging up to 64 per cent., and the average reduction granted to applicants on these more recent settlements was 34 per cent.

WESTLAND.

(B. KING, Commissioner of Crown Lands.)

There were no purchases of estates during the year. The settlers have had a fair average year for farming, and most are now sufficiently well established to pay charges as they fall due.

CANTERBURY.

(N. C. KENSINGTON, Commissioner of Crown Lands.)

No new areas were purchased during the past year in this district.

Numerous applications from occupiers of lands purchased under the Land for Settlements Act were dealt with by the several Adjustment Commissions acting under the Mortgagors and Lessees Rehabilitation Act, and, given fair average prices, settlers on economic areas should carry on successfully with the relief given.

With the vagaries of prices and changing conditions numerous individual holdings have proved uneconomic, and, where possible, a regrouping of sections is being carried out.

Settlement lands being largely on the low country, the revenue returns for the past year should be very fair, and although weather difficulties have been experienced the mixed nature of the farming operations should average out reasonably well.

Following on the heavy rainfall of last year, drainage in many parts of this district requires attention, and a systematic method of dealing with drainage and river protection is one that will require to be given attention in the near future.

Settlers who did not take advantage of the Mortgagors and Lessees Rehabilitation Act as an avenue for having their rent adjusted under the present conditions are in many cases having their rent considered under section 216 of the Land Act, and numerous applications are being dealt with.

Some of the early renewable leases of settlement land are expiring shortly, and the valuations for assessing the rentals for the renewed leases are now receiving attention.

OTAGO.

(W. E. SHAW, Commissioner of Crown Lands.)

No new estates were purchased during the year.

Owing principally to the favourable climatic conditions that have prevailed, the land-for-settlements settlers generally have, in common with the majority of other landholders, had a very successful season.

SOUTHLAND.

(T. Cagney, Commissioner of Crown Lands.)

Four sections in the Lora Settlement were offered during the year, and all were selected. It is proposed to offer another section in this settlement during the ensuing year.

The readjustment of the areas of the holdings of the Stalker and Campbell Settlements has been practically completed, and the various occupiers concerned are much appreciative of the action taken to give them the benefit of increased areas, which hitherto were too small.

Settlements generally, with few exceptions, may be regarded as in a sound position.

Table 1.—RETURN SHOWING (APPROXIMATELY) POSITION OF LANDS IN THE DOMINION AT 31ST MARCH, 1939.

District.	Total Area sold or granted and held on Freehold.	Total Area reserved for Public Purposes.	Total Area of Crown Lands leased under all Tenures (exclusive of Reserves leased by Crown).	Total Area of Crown Lands available for Future Disposal.	Total Area of Native Land.	Land unfit for Settlement (including Area occupied by Rivers, Lakes, Roads, &c.).	Total Area in Land District.
	Acres.	Acres.	Acres.	Acres.	Acres.	Acres.	Acres.
North Auckland	2,645,876	461,504	500,576	137,776	515,040	217,428	4,478,200
Auckland	2,824,865	1,244,733	806,285	538,478	1,634,634	171,578	8,220,573
Gisborne	1,150,178	486,670	508,103	74,189	1,041,954	251,832	3,515,926
Hawke's Bay	1,582,305	202,470	502,638	42,813	371,222	216,438	2,917,836
Taranaki	1,127,659	350,897	586,636	83,717	165,706	89,906	2,404,431
Wellington*	3,550,285	1,066,481	762,813	136,218	786,024	749,548	7,051,069
Nelson	665,588	2,455,829	536,937	298,374	30,051	728,224	4,715,000
Marlborough	782,965	253,239	1,320,920	202,612	..	108,264	2,768,000
Westland	172,897	2,169,663	616,846	435,520	..	469,112	3,863,378
Canterbury	3,568,029	1,579,638	3,792,706	90,074	..	447,983	9,478,430
Otago	1,977,463	958,759	5,450,229	9,213	..	612,113	9,007,777
Southland	1,863,270	4,569,050	1,370,385	37,494	..	129,327	7,969,526
Totals	21,911,380	15,897,883	16,755,074	2,086,475	4,544,631	5,194,753	66,390,496

* Includes Chatham Islands.

Table 2.—LANDS SELECTED DURING THE YEAR ENDED 31ST MARCH, 1939.

Land District.	Cash.		Deferred Payments.		Renewable Lease.		Small Grazing-runs.		Pastoral Runs.		Pastoral Licenses in Mining Districts under Special Regulations.		Mining Districts Land Occupation Leases.		Miscellaneous Leases, &c.		Education Endowments.		Totals.	
	No.	Area.	No.	Area.	No.	Area.	No.	Area.	No.	Area.	No.	Area.	No.	Area.	No.	Area.	No.	Area.	No.	Area.
	Acres.	Acres.	Acres.	Acres.	Acres.	Acres.	Acres.	Acres.	Acres.	Acres.	Acres.	Acres.	Acres.	Acres.	Acres.	Acres.	Acres.	Acres.	Acres.	Acres.
North Auckland	..	25	134	15	751	32	3,440	5	1,234	59	2,175	17	468	148	6,968
Auckland	..	31	821	12	2,394	28	5,871	3	..	69	14,141	3	23	151	24,535
Gisborne	10	2,373	2	43	16	3,221
Hawke's Bay	..	8	805	736	8	3,587	2	9	23	4,435
Taranaki	..	1	595	6	1,005	10	3,182	2	43	19	4,825
Wellington	..	8	7	20	79	17	3,700	76	17,570	13	1,563	134	22,859
Nelson	..	2	8	23	142	2	156	22	3,359	2	1	51	3,666
Marlborough	5	1,369	11	235	2	..	18	1,604
Westland	..	9	3	19	169	..	2	3,410	13	3,882	9	..	87	4,276	1	25	140	11,806
Canterbury	..	6	13	2	1,439	12	1,784	..	3	43,762	101	3,160	6	24,615	130	74,773
Otago	..	7	17	20	2,467	..	7	61,982	2	..	76	25,780	21	6	133	90,254
Southland	..	4	61	16	2,192	..	3	13,370	34	1,847	42	5,133	99	22,603
Totals	..	105	2,567	55	5,668	187	25,052	..	15	122,524	20	5,272	14	94	555	78,546	111	31,826	1,062	271,549

Table 3.—LANDS HELD ON LEASE AT 31ST MARCH, 1939.

Land District.	Deferred Payments.		Lease in Perpetuity.		Renewable Lease.		Occupation with Right of Purchase.		Small Grazing-runs.		Pastoral Runs.		Pastoral Licenses in Mining Districts.		Mining Districts Land Occupation Leases.		Perpetual Leases.		Miscellaneous Leases and Licenses.		Education Endowments.		Totals.	
	No.	Area.	No.	Area.	No.	Area.	No.	Area.	No.	Area.	No.	Area.	No.	Area.	No.	Area.	No.	Area.	No.	Area.	No.	Area.	No.	Area.
	Acres.	Acres.	Acres.	Acres.	Acres.	Acres.	Acres.	Acres.	Acres.	Acres.	Acres.	Acres.	Acres.	Acres.	Acres.	Acres.	Acres.	Acres.	Acres.	Acres.	Acres.	Acres.	Acres.	Acres.
North Auckland	566	61,350	426	68,665	1,166	229,993	375	58,916	1	553	1	64	552	97,021	783	45,640	3,876	562,404
Auckland	1,426	163,294	337	90,412	1,331	262,746	465	132,565	13	19,948	1	8,755	91	22,853	124	1,611	868	68,404*	190	34,358	4,846	804,946
Gisborne	52	15,144	78	41,755	328	187,993	77	50,060	73	165,521	139	24,434	71	36,733	818	521,640
Hawke's Bay	121	27,829	383	99,593	602	228,189	112	37,207	20	39,454	9	62,034
Taranaki	175	28,300	565	137,676	513	169,472	227	88,114	2	3,336	2	49,007	191	50,961	1,360	553,678
Wellington	781	99,518	1,002	141,458	1,137	207,957	270	98,259	14	24,347	6	10,626	665	59,861	614	46,408	2,371	522,313
Nelson	61	14,672	334	104,124	650	237,128	26	10,467	6	9,603	2	35,524	114	23,501	16	528	428	79,521	133	7,879	1,771	523,051
Marlborough	38	17,084	543	171,956	299	161,476	63	17,693	108	274,670	41	662,953	234	13,621	35	1,414	1,368	1,320,920
Westland	77	9,676	349	38,993	723	80,843	13	2,379	35	342,885	247	47,874	137	772	792	187,613	137	15,095	2,510	726,130
Canterbury	70	25,510	1,560	265,025	907	364,926	3	60	127	446,737	119	2,653,265	54	1,663	1,118	202,763†	233	70,798	4,191	4,030,747
Otago	77	41,504	1,281	272,549	1,121	374,338	108	15,373	387	1,449,239	322	3,272,135	66	3,412	1,425	46,510	440	46,510	5,598	5,638,615
Southland	103	14,019	534	90,162	446	88,795	121	18,427	21	65,538	64	1,120,057	40	1,164	175	49,429	837	339,087	2,615	1,786,853
Totals	3,547	517,900	7,392	1,522,368	9,223	2,393,856	1,860	320,520	771	2,498,393	600	8,168,787	452	94,228	689	16,323	152	6,087	7,051	991,454	4,176	797,824	35,913	17,736,740

Note.—This table includes national endowments and education endowments, but excludes other endowments administered by Land Boards.

* Includes Thermal Springs district leases.

† Includes Hammer Crown leases.

‡ Includes agricultural leases.

Table 4.—LANDS DISPOSED OF UNDER THE LAND FOR SETTLEMENTS ACT TO THE 31ST MARCH, 1939.

Land District.	Area acquired.	Area occupied by Roads and Reserves unlet.	Area of Land unlet, including Land forfeited, surrendered, or resumed, and not relet, and also Land not yet offered for Selection.	Total Area purchased for Cash and made Freehold to Date.			Total Lands leased to Date.			Rent and other Payments received during the Year.	Total Receipts from inception to 31st March, 1939.
				Number of Purchasers.	Area.	Price realized.	Number of Selectors.	Area.	Annual Rental.		
	Acres.	Acres.	Acres.		Acres.	£		Acres.	£	£	£
North Auckland	53,941	1,125	1,092	273	5,894	51,038	289	45,830	14,874	13,731	295,631
Auckland ..	382,964	77,431	37,801	993	166,558	452,989	731	101,174	32,188	59,202	1,368,248
Gisborne ..	87,809	435	12,989	65	11,450	91,729	213	62,935	16,945	27,160	460,510
Hawke's Bay ..	228,658	2,415	2,870	205	46,623	285,204	546	176,750	59,601	69,429	1,378,867
Taranaki ..	26,426	260	2,665	67	2,635	49,761	133	20,866	9,338	7,239	270,100
Wellington ..	161,641	1,047	5,884	595	24,096	257,694	863	130,614	71,826	77,287	1,702,034
Nelson ..	59,438	975	10,999	11	3,805	5,596	58	43,659	2,457	3,373	76,010
Marlborough ..	235,867	2,648	748	64	12,585	52,537	478	219,886	28,408	22,486	1,004,400
Westland ..	6,039	80	101	7	813	916	37	5,045	832	732	22,481
Canterbury ..	607,218	4,645	4,733	381	27,758	218,445	1,825	570,082	137,730	133,859	4,585,839
Otago ..	349,220	3,871	118	107	11,378	63,270	1,132	324,853	77,077	79,302	2,141,311
Southland ..	192,143	1,048	565	145	18,920	75,248	347	81,610	17,614	18,667	576,762
Totals ..	2,292,364	95,980	80,565	2,913	332,515	1,604,427	6,652	1,783,304	468,890	512,467	13,882,193

Table 5.—ENDOWMENT LANDS ADMINISTERED BY LAND BOARDS AND LEASED AT 31ST MARCH, 1939.

	National Endowment.			Education Endowments.			Other Endowments.			Totals.		
Land District.	Number	Area.	Annual Rental.	Number	Area.	Annual Rental.	Number	Area.	Annual Rental.	Number	Area.	Annual Rental.
		Acres.	£		Acres.	£		Acres.	£		Acres.	£
North Auckland	465	100,811	7,287	783	45,640	9,082	8	777	23	1,256	147,228	16,392
Auckland ..	491	134,756	4,719	190	31,258	2,839	19	933	451	700	170,047	8,000
Gisborne ..	77	136,755	8,283	71	36,733	4,790	3	946	47	151	174,434	13,120
Hawke's Bay ..	53	35,488	4,134	191	59,961	9,210	244	86,449	13,344
Taranaki ..	152	55,976	2,492	614	46,408	10,497	18	9,698	1,167	784	112,082	14,156
Wellington ..	118	60,036	3,415	512	102,941	28,414	62	17,686	2,604	692	180,663	34,463
Nelson ..	601	214,954	3,544	133	7,879	611	570	13,886	1,663	1,304	236,719	5,818
Marlborough ..	199	475,568	7,909	35	1,414	542	234	476,922	8,451
Westland ..	914	188,391	3,440	137	15,095	866	20	10	109	1,071	203,496	4,415
Canterbury ..	154	1,574,343	36,449	233	70,798	25,878	387	1,645,141	62,327
Otago ..	761	2,510,549	40,701	440	46,510	5,709	68	177,291	7,185	1,269	2,734,350	53,595
Southland ..	228	765,457	7,084	837	339,987	20,376	13	109,259	2,093	1,078	1,213,803	29,553
Totals ..	4,213	6,253,024	129,448	4,176	797,824	118,844	781	330,486	15,342	9,170	7,381,334	263,634

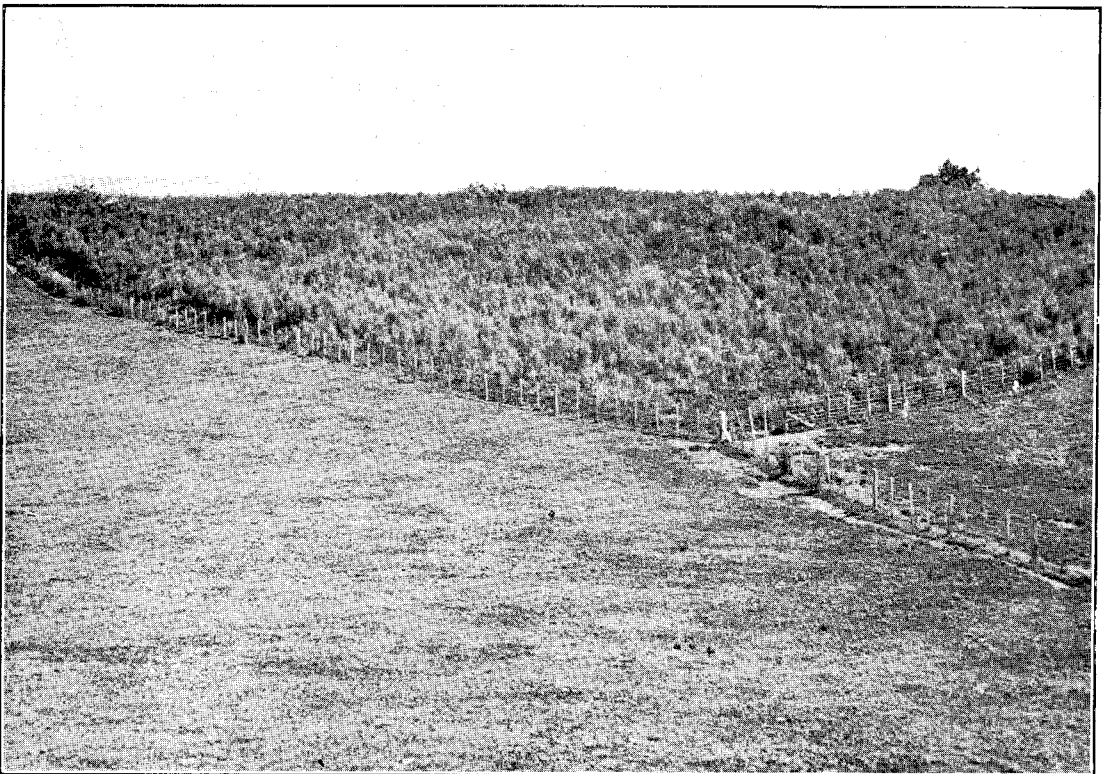
Table 6.—TOTAL RECEIPTS, ARREARS, AND POSTPONEMENTS.

(Total receipts from debtors and exclusive of credits on account departmental expenditure, &c.)

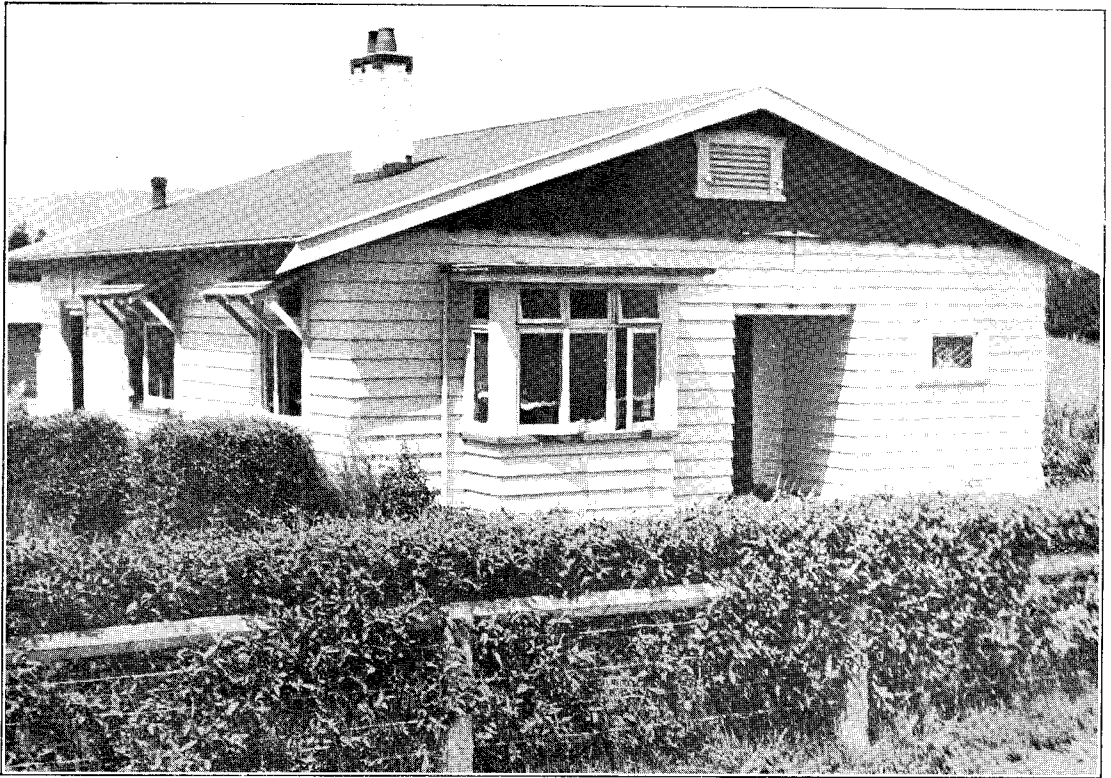
	Total.	North Auckland.	Auckland.	Gisborne.	Hawke's Bay.	Taranaki.	Wellington.	Marlborough.	Nelson.	Westland.	Canterbury.	Otago.	Southland.	Head Office.
	£	£	£	£	£	£	£	£	£	£	£	£	£	£
RECEIPTS, YEAR ENDED 31ST MARCH, 1939.														
Crown Lands Account ..	277,172	25,946	36,437	20,575	34,665	18,826	45,388	8,470	5,438	4,225	27,782	36,765	12,634	21
Land for Settlements Account ..	751,186	58,415	175,660	30,126	93,255	21,492	95,253	24,892	4,532	2,858	136,680	82,192	22,440	3,391
Hutt Valley ..	12,962	12,962
Cheviot Estate ..	17,945	17,945
National Endowment Account ..	122,964	5,551	4,076	9,091	3,495	2,128	3,156	7,398	3,163	4,490	34,427	38,761	7,228	..
Education Endowment Account ..	127,087	9,164	3,157	5,651	10,135	10,846	31,647	585	621	1,243	26,388	5,683	21,966	1
Other endowments ..	15,420	277	69	..	1,080	1,095	2,249	..	1,811	369	183	5,882	2,405	..
Small Farms Account ..	72,773	27,238	27,884	162	4,118	3,337	3,144	151	423	35	159	3,161	2,929	32
Survey Liens Account ..	4,256	511	639	137	790	151	..	2	9	17	..	2,000
Hauraki ..	18,638	..	18,638
Rangitiki ..	26	26
Swamp ..	952	..	426	..	526
Miscellaneous ..	8,120	974	2,318	480	187	553	506	70	326	467	289	1,379	542	29
Totals ..	1,429,501	127,565	268,665	66,396	148,100	58,414	195,095	41,717	16,314	13,689	243,862	173,840	70,144	5,500
ARREARS AND POSTPONEMENTS.														
Arrears ..	424,550	43,991	32,373	8,953	32,220	9,327	66,381	33,464	9,043	3,663	100,271	66,776	18,088	..
Postponements ..	34,668	3,745	5,625	1,367	2,325	382	5,551	1,680	161	19	6,047	4,809	2,957	..
Total outstanding ..	459,218	47,736	37,998	10,320	34,545	9,709	71,932	35,144	9,204	3,682	106,318	71,585	21,045	..



BALING HAY, EDGECUMBE BLOCK.



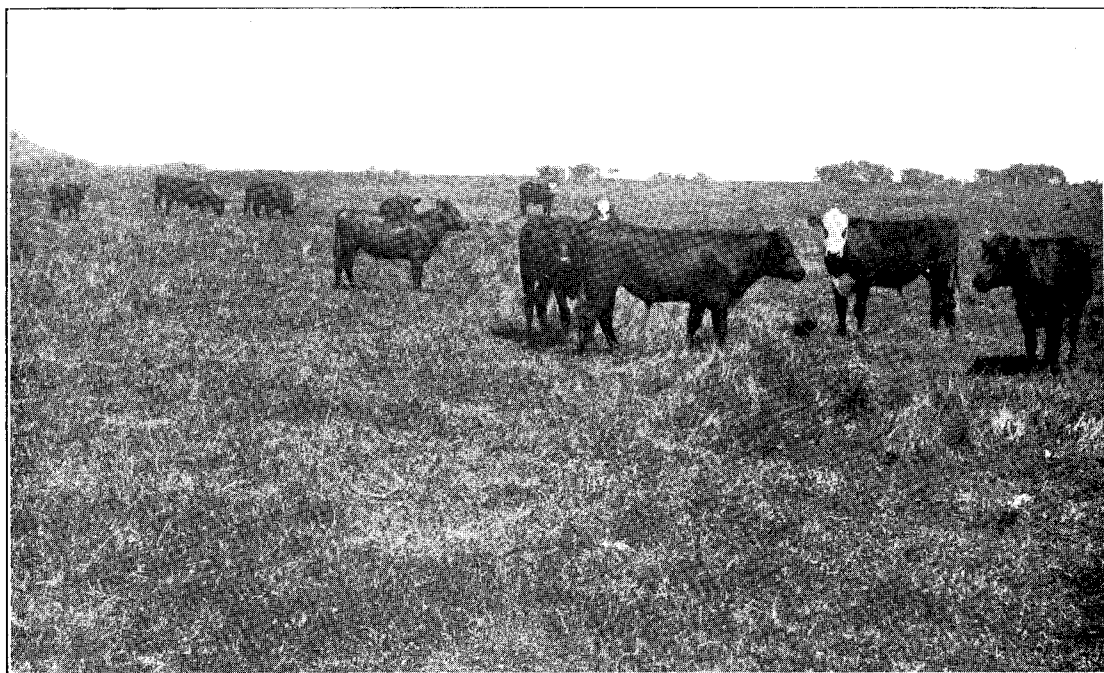
DEVELOPED AND UNDEVELOPED LAND, EDGECUMBE BLOCK.



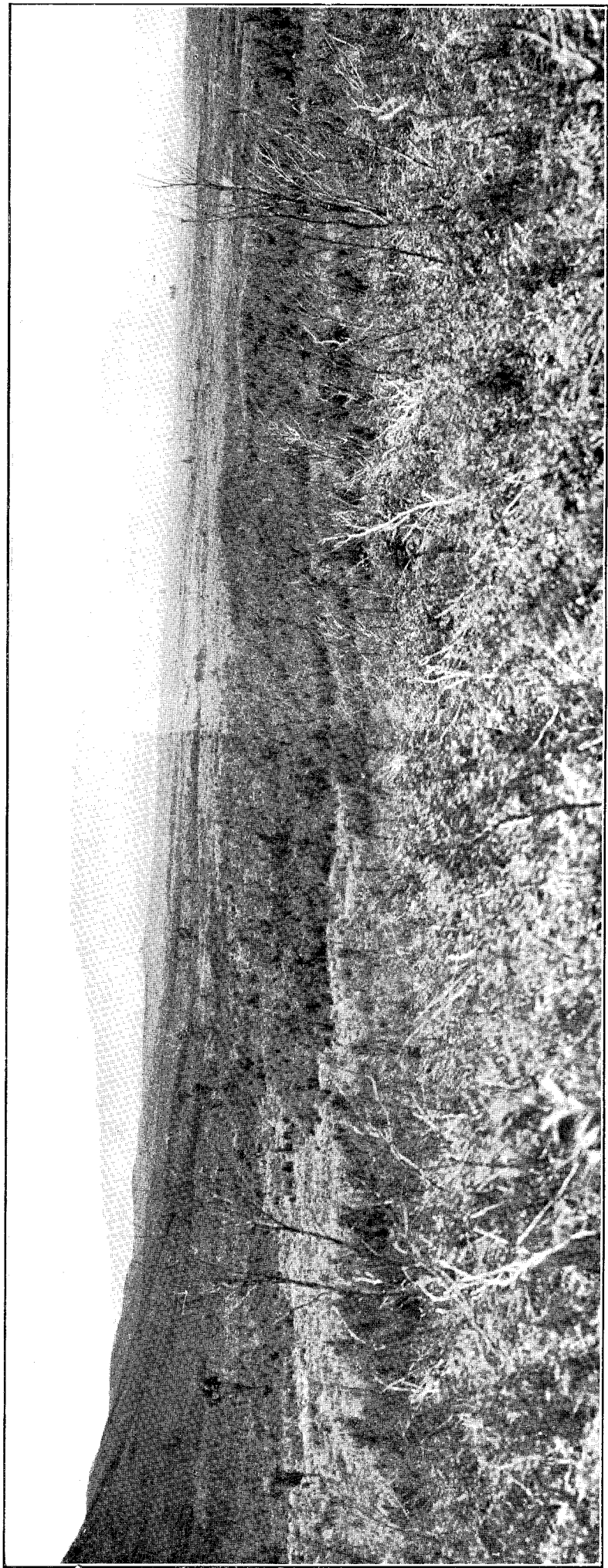
SMALL-FARM COTTAGE, TARAWERA BLOCK.



LUCERNE STAND, TARAWERA BLOCK.



GENERAL VIEW OF PASTURE AND TWO-YEAR-OLD CATTLE ON PAKIHI LAND-DEVELOPMENT
SCHEME, WESTPORT.



PANORAMA OF THE WAIKITE BLOCK RECENTLY TAKEN OVER BY SMALL FARMS BOARD
FOR DEVELOPMENT.

Approximate Cost of Paper.—Preparation, not given; printing (770 copies, including maps and illustrations), £86.

By Authority: E. V. PAUL, Government Printer, Wellington.—1939.

Price 1s. 3d.