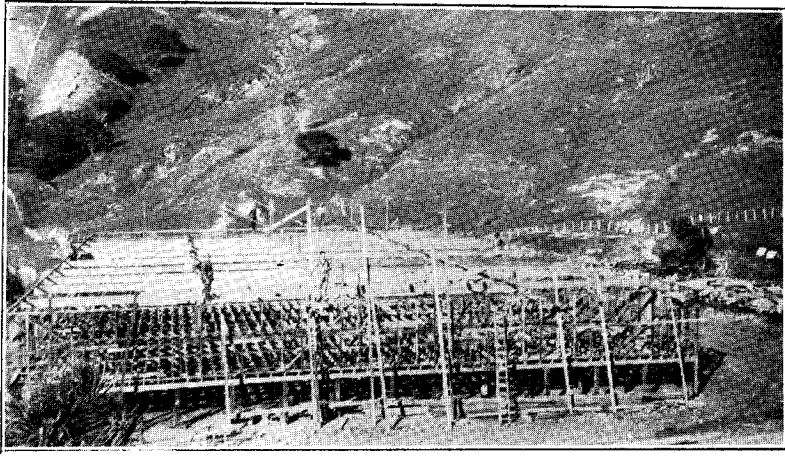
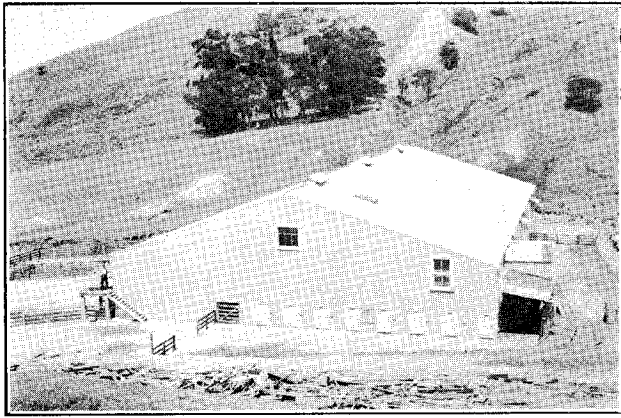


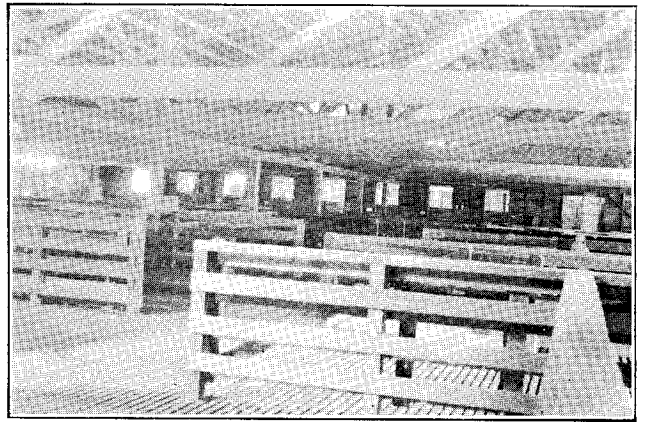
NATIVE TRUST STATIONS.



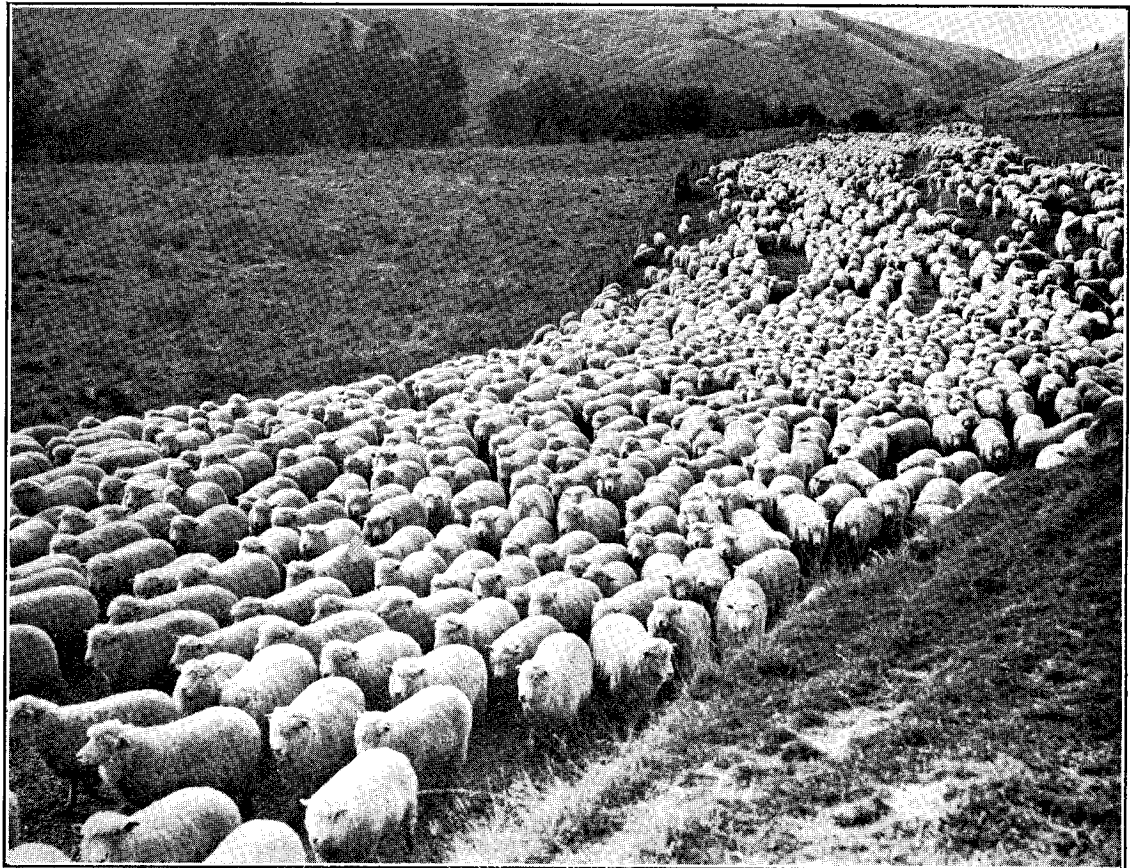
50. AOHANGA STATION: THE FLOOR FRAMING OF THE NEW WOOL-SHED.



51. AOHANGA STATION: NEW WOOL-SHED NEARING COMPLETION.



52. AOHANGA STATION: INTERIOR VIEW OF NEW WOOL-SHED.



53. AOHANGA STATION: A LINE OF FAT WETHERS GOING OFF THE STATION.

Approximate Cost of Paper.—Preparation, not given; printing (870 copies, including illustrations, and maps), £240.