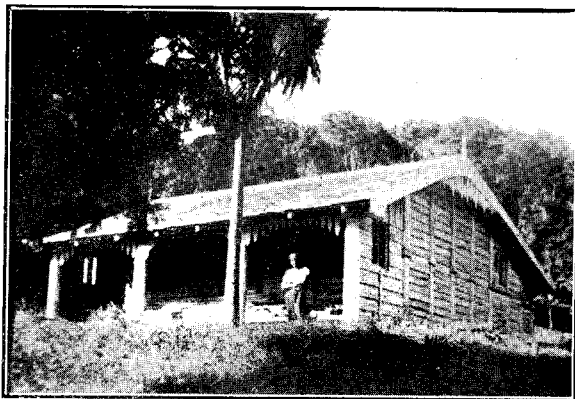
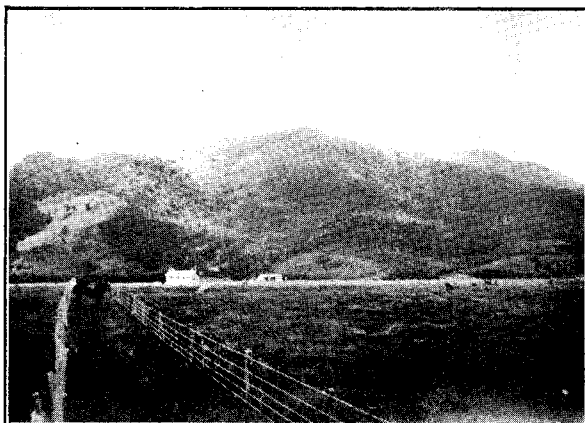


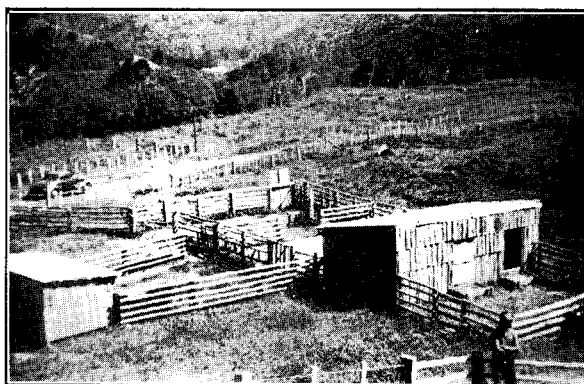
WAIKATO-MANIAPOTO (SOUTH AUCKLAND) DISTRICT.



12. HARATAUNGA SCHEME: A HOUSE BUILT OF SPLIT KAURI TIMBER BY A SETTLER AT KENNEDY'S BAY.



13. HARATAUNGA SCHEME: CLASS OF COUNTRY UNDER DEVELOPMENT AT KENNEDY'S BAY.



14. HARATAUNGA SCHEME: COW-SHED AND YARDS ERECTED BY SETTLER, THE SHEDS BEING BUILT OF SPLIT KAURI SLABS.