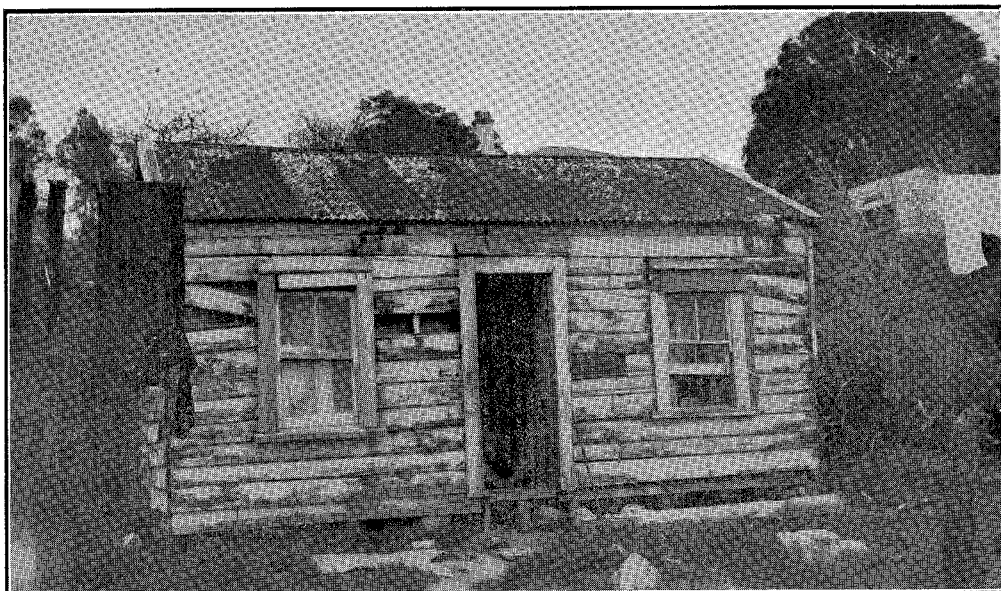
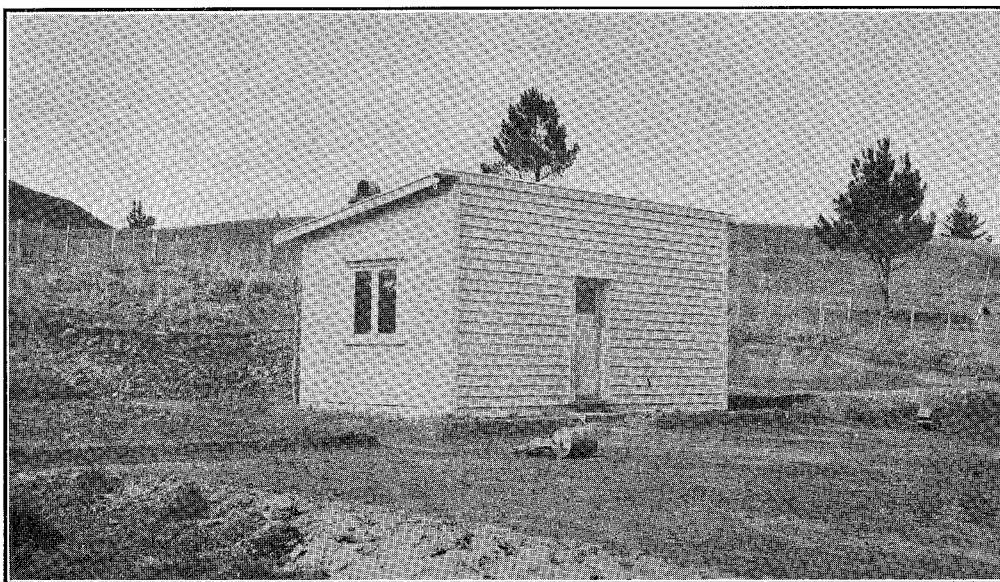


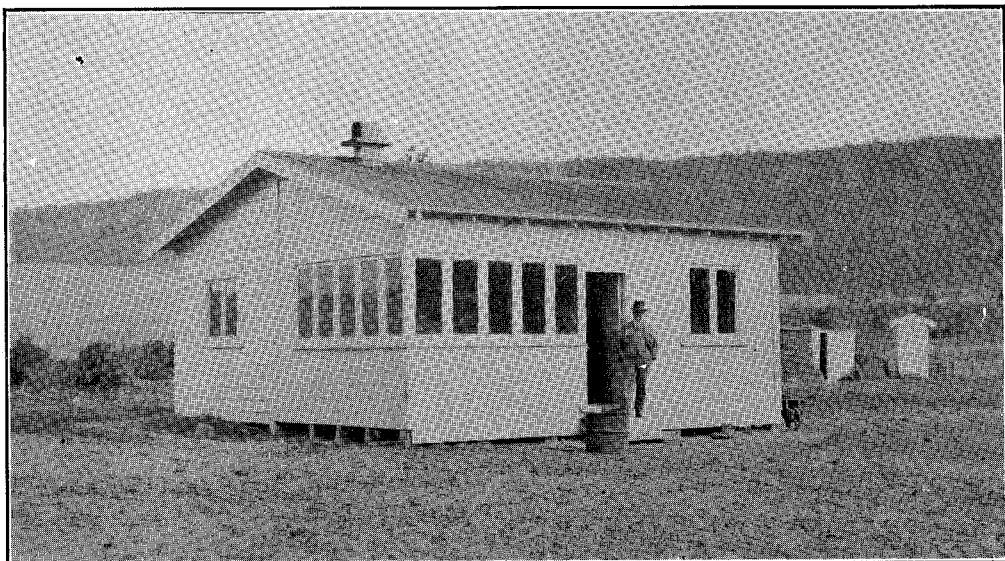
WAIARIKI (ROTORUA) DISTRICT.



7. NATIVE DWELLING, OHINEMUTU VILLAGE—CONDEMNED TO BE DEMOLISHED (1937).



8. HOROHORO SCHEME: NEW TYPE OF LEAN-TO COTTAGE BEING ERECTED TO-DAY (1937).



9. HOROHORO SCHEME: SAME TYPE OF DWELLING AFTER ADDITIONS MADE (1937).