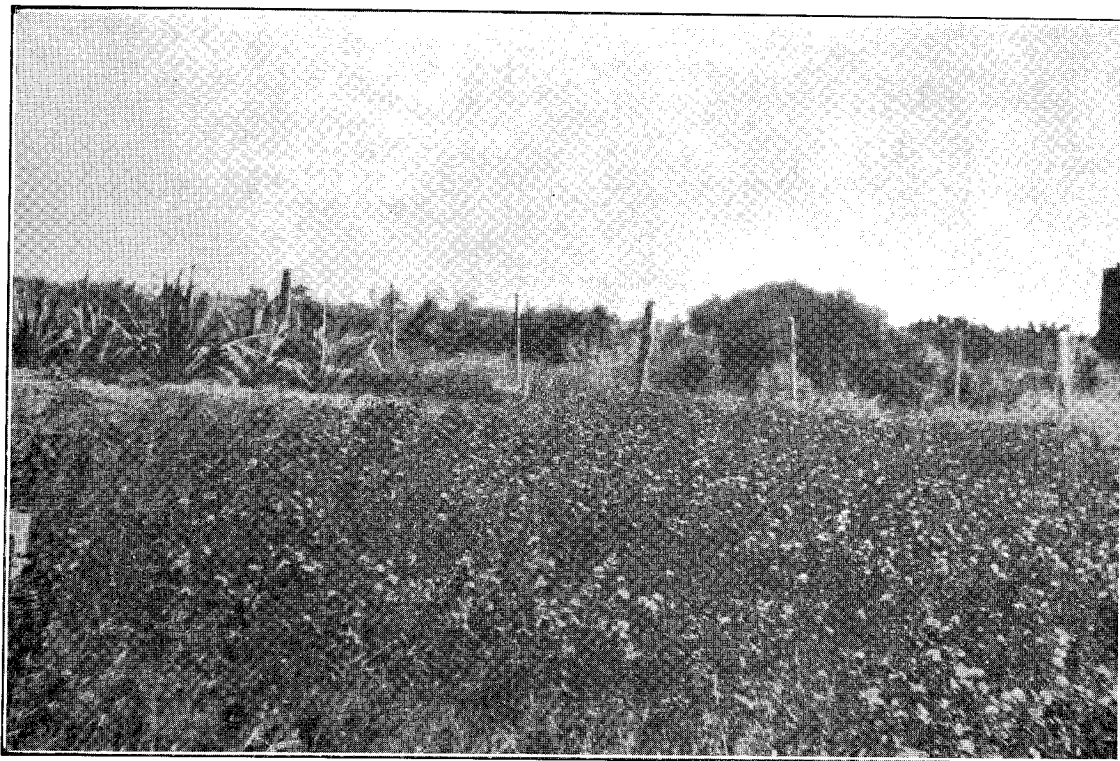


PAKIHI DEVELOPMENT.



ORIGINAL PLOT OF GRASS AND CLOVER, ILLUSTRATING SUCCESS OF SURFACE-SOWING METHOD OF PASTURE ESTABLISHMENT.

(Treatment: Slaked lime and basic slag.)

WHARERE BLOCK.



No. 1.—NATURAL GROWTH, BEFORE DEVELOPMENT.



No. 2.—SHOWING COUNTRY AFTER DEVELOPMENT.