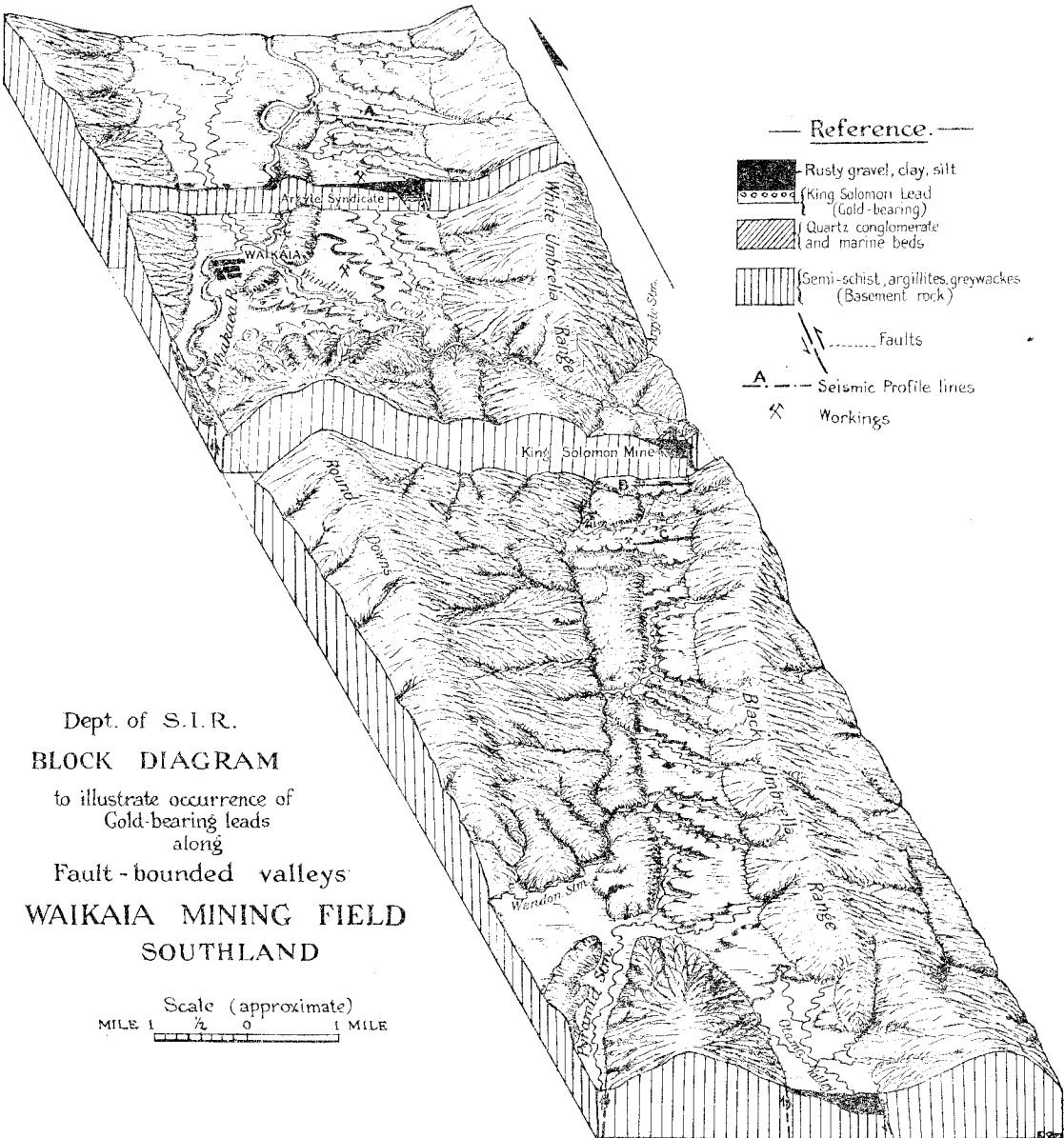
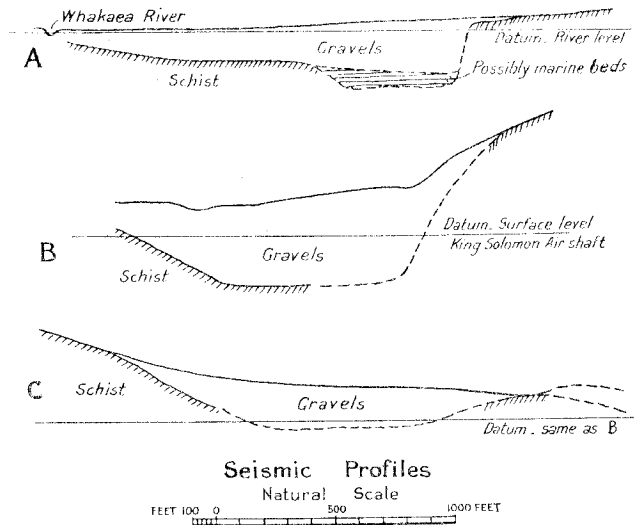


The fault structure that appears to control the distribution of the gold-bearing gravel in the King Solomon Mine persists southward into the Otama Valley and it is considered that the pre-Whakaea River was adjusted to this fault structure and flowed southward along it and deposited gold-bearing gravel now concealed beneath the younger silt, sand, and gravel.



Dept. of S.I.R.
BLOCK DIAGRAM
to illustrate occurrence of
Gold-bearing leads
along
Fault-bounded valleys
WAIKAIA MINING FIELD
SOUTHLAND