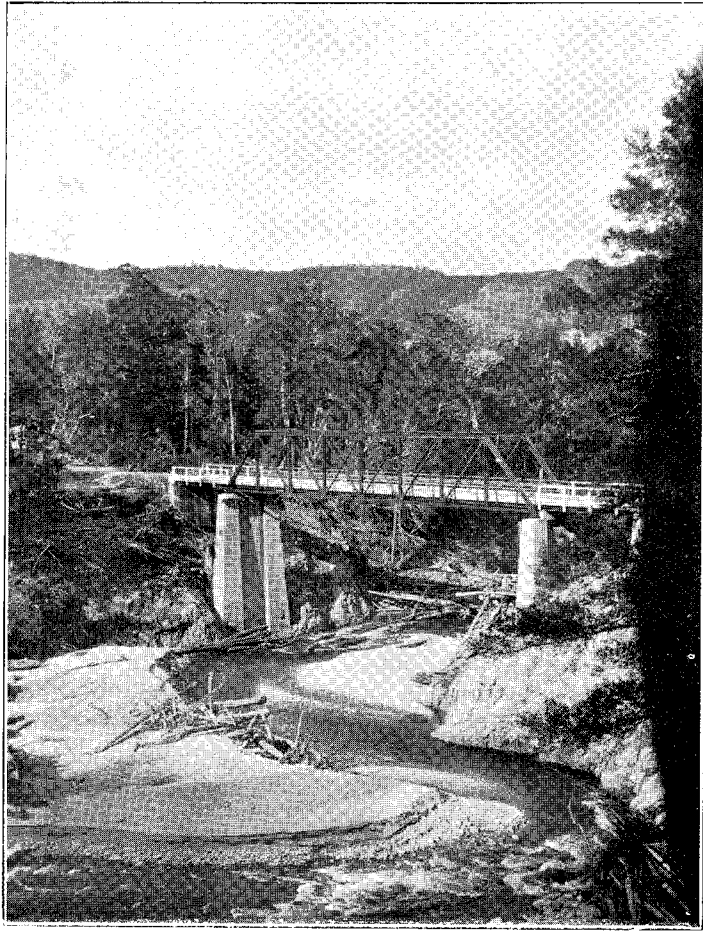
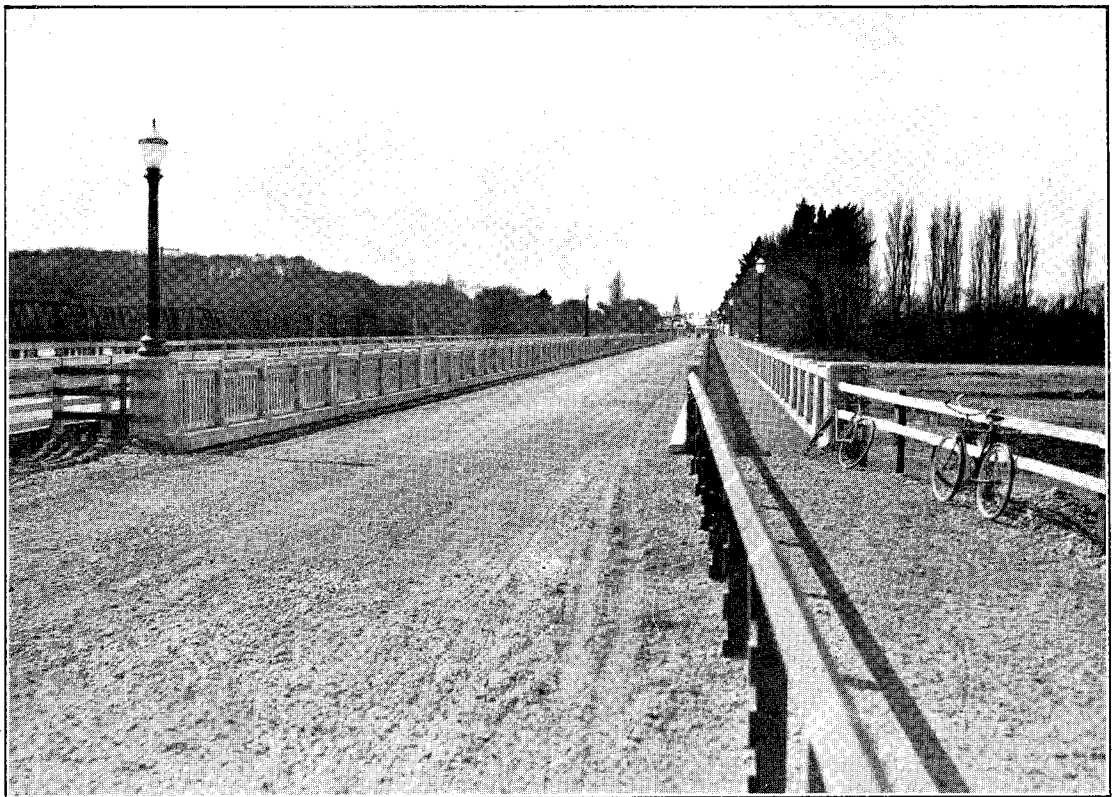


D.—1.



NELSON-WESTPORT MAIN HIGHWAY.—NEWTON RIVER BRIDGE.  
One 120 ft. through steel truss span, and two 30 ft. rolled-steel-joist spans; 12 ft. roadway.



PICTON-BLUFF MAIN HIGHWAY.—ASHBURTON RIVER ROAD-BRIDGE.  
Thirty-two 35 ft. spans, reinforced concrete; 22 ft. roadway and 6 ft. footway.