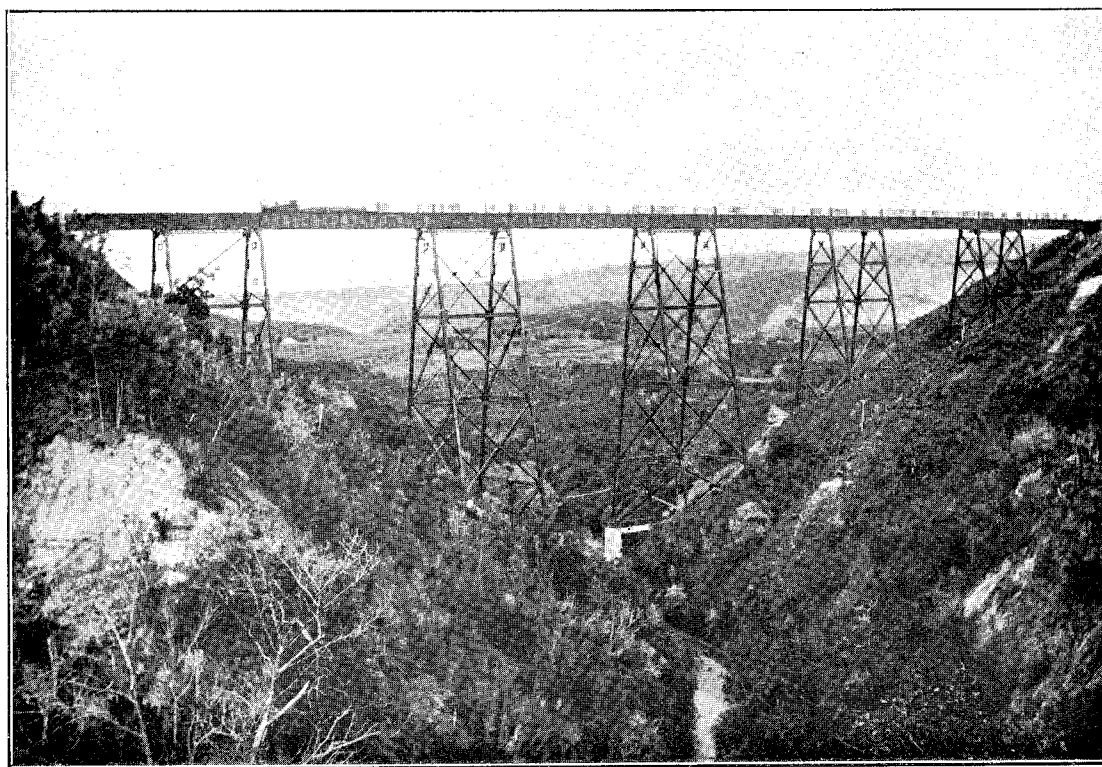


TOWERS ERECTED.



GIRDERS IN PLACE.



VIADUCT COMPLETED, EXCEPT FOR SMALL PORTION OF WIND-SCREEN.

MAUNGATURANGA VIADUCT.

Five 100 ft. spans, six 50 ft. spans: Total length, 800 ft.; height above stream-bed, 215 ft.

NAPIER-GISBORNE RAILWAY.—WAIROA SECTION.