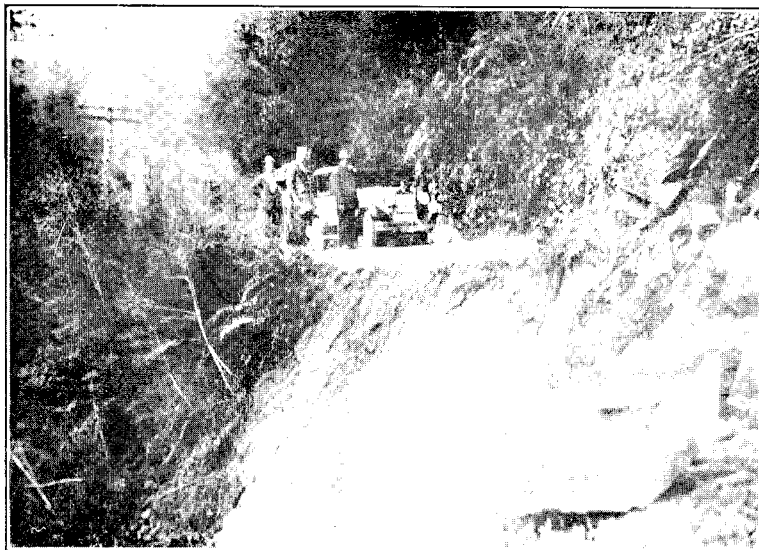


5. LANDSLIDE ACROSS ROAD AND LINE NEAR SOUTH SIDE OF SULLIVAN'S BRIDGE, BULLER GORGE.



6. A "GRANITE SHOOT" OVER ROAD NEAR DUBLIN TERRACE, IN BULLER GORGE.



7. DISASTER NARROWLY AVERTED: AN ABANDONED CAR SOUTH OF NEWTON FLAT, BULLER GORGE.