

II. NATIVE AFFAIRS.

POLICY.

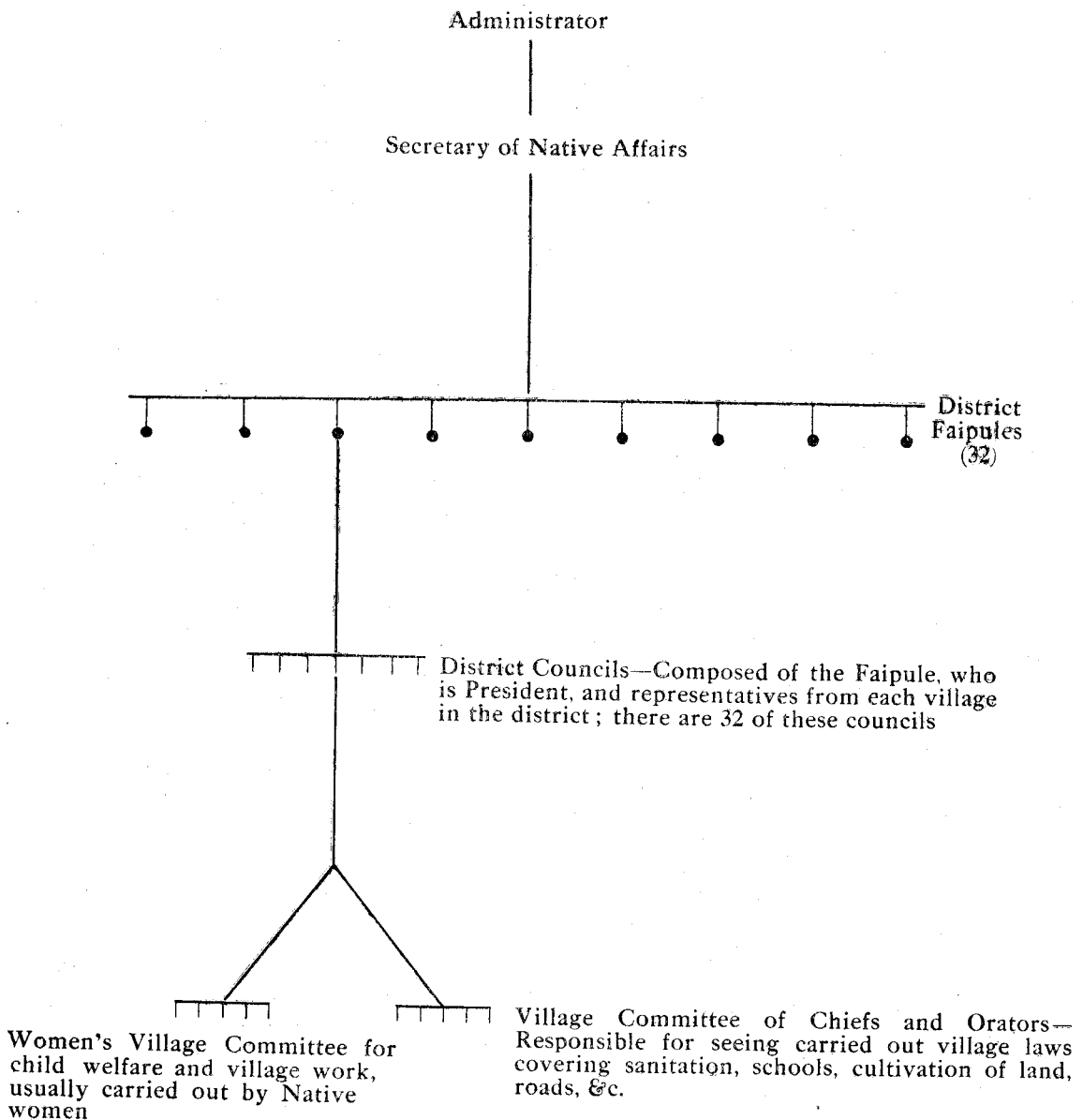
The policy of the Government to invest the Natives with as much authority as possible in the control of their own local affairs, and for the retention of the authority of the chiefs within certain limits, under close supervision of the European officials of the Native Department and its Inspectors is being adhered to.

The progress made varies very much in districts and villages, according to the intelligence and energy of the leaders. The principal method adopted to give effect to this policy is to work through various Native Councils or Committees composed of chiefs legally constituted with authority to carry out certain laws and regulations, and also such instructions as are issued from time to time by the Administrator. European Inspectors are deputed to regularly visit every district and village to assist the Natives and to report to the Administrator.

In the first place all new laws are explained by the Administrator to the thirty-two district representatives (Faipules) at their Council meetings, held twice a year and lasting for about ten days. At these assemblies regulations are revised, or new ones adopted after discussion and approval by the members. New regulations and all instructions are promulgated by the Secretary for Native Affairs to all concerned through channels shown below. District Councils and Village Committees also assemble periodically and carry out their duties for furthering the interests and controlling the local affairs of their respective districts or villages.

By these means the Natives are gradually learning to think for themselves, to initiate schemes for their own advancement, and to appreciate that real progress can be made only by their personal and combined efforts. They are an emulative people, and the example set by one village has a stimulating effect upon others.

CHANNELS OF AUTHORITY IN NATIVE AFFAIRS



Each village has its two committees