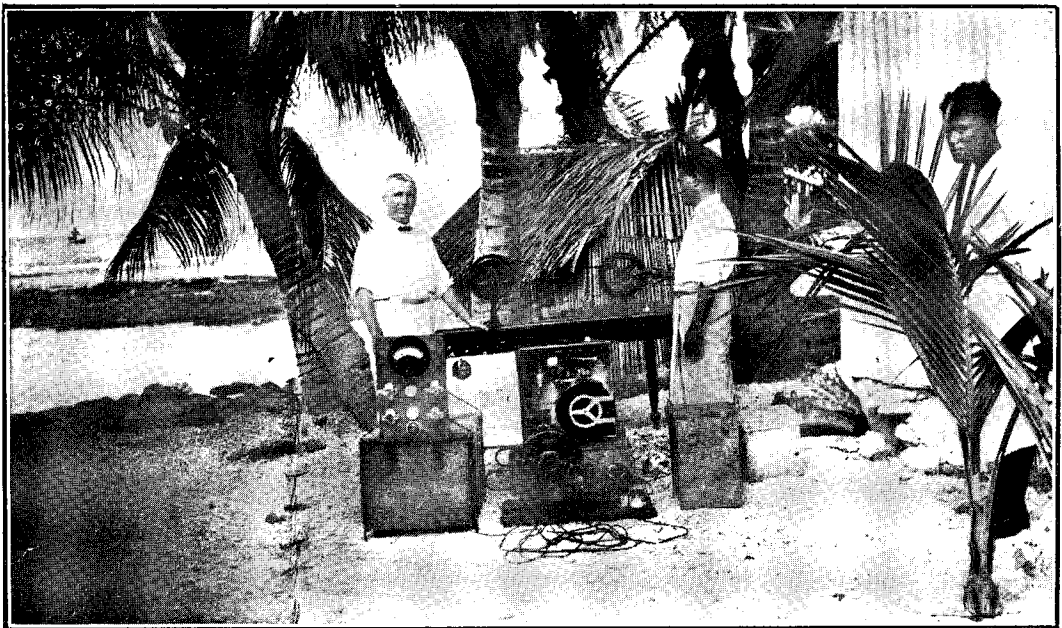




GROUP OF TOKELAU (UNION) ISLAND CHILDREN.  
(The chief foods of these islanders are coconuts and fish, a diet on which the children thrive.)



PORTABLE CINEMA OUTFIT USED BY THE HEALTH DEPARTMENT FOR EDUCATIONAL PURPOSES  
THROUGHOUT THE TERRITORY.