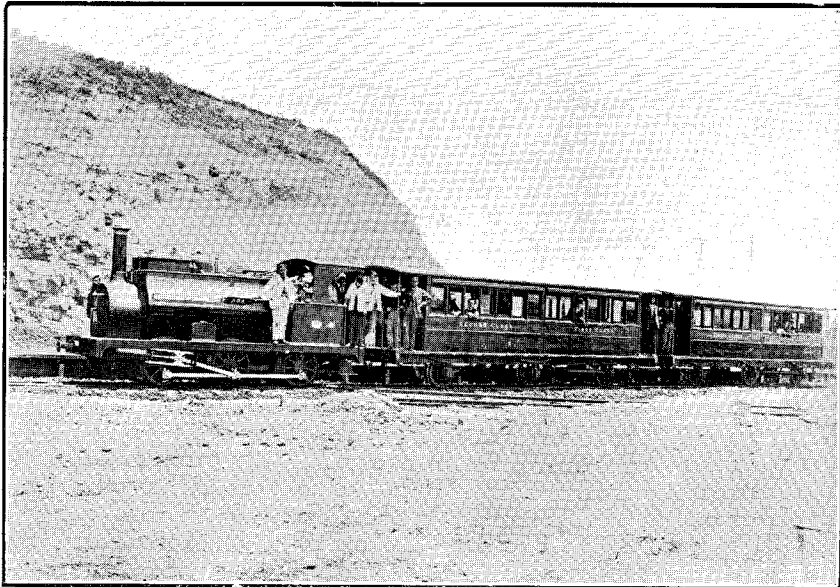


ENGINES ON NEW ZEALAND RAILWAYS: PAST.



*Photo, W. Stewart.*

OPENING OF THE AUCKLAND-ONEHUNGA RAILWAY, 24TH DECEMBER, 1873.

The train ready to leave Auckland Station.

Engine, "Ada," Class F, 0-6-0 type. Makers, Stephenson and Co., 1873. Diameter coupled wheels, 3 ft. 0½ in.; cylinders, 10½ in. by 18 in. Working-pressure, 160 lb. per square inch. Water capacity, 450 gallons. Tractive power, 6,960 lb. Weight in working trim, 20 tons.



*Photo, W. Stewart.*

OLD CLASS B DOUBLE FAIRLIE TANK ENGINE, 0-4-4-0 TYPE.

Makers, Avonside Engineering Company, Bristol, 1874. Diameter of coupled wheels, 3 ft. 3 in.; cylinders, 9 in. by 16 in. Working-pressure, 130 lb. per square inch; tractive power, 6,900 lb. Water capacity, 750 gallons. Weight in working trim, 32 tons.