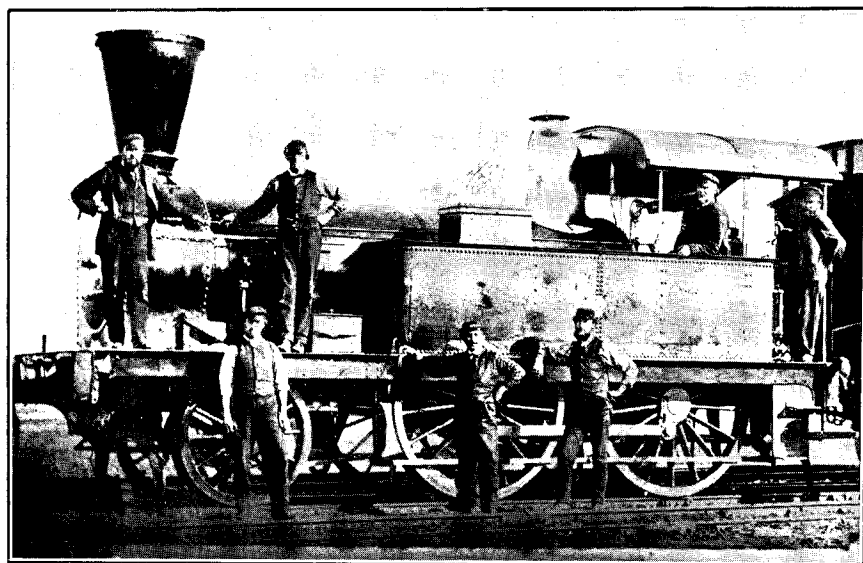


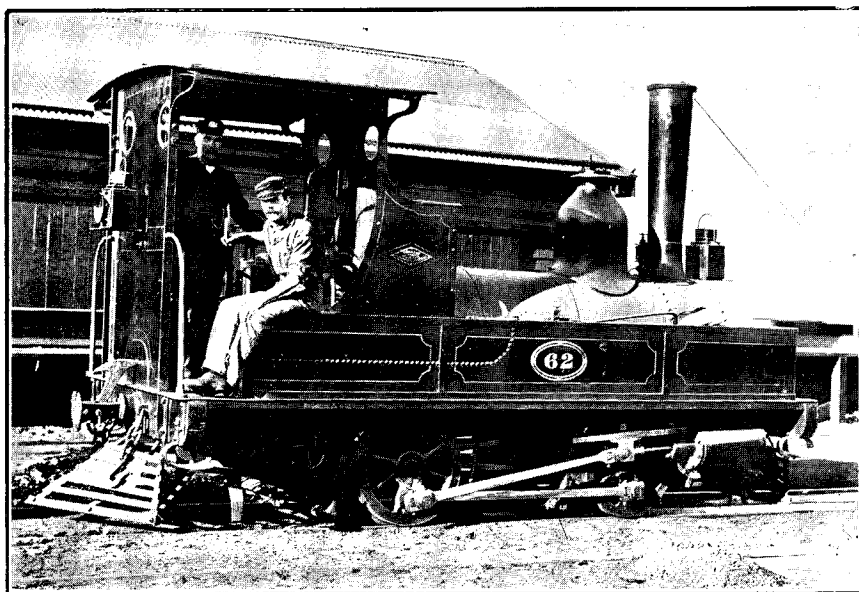
ENGINES ON NEW ZEALAND RAILWAYS: PAST.

*Photo, W. Stewart.*

OLD BROAD-GAUGE LOCOMOTIVE, 2-4-0 TYPE.

Makers, Slaughter, Grunning, and Co., Bristol (now Avonside Engine Company), 1862. Diameter of coupled wheels, 5 ft. 6 in.; cylinders (inside), 15 in. by 21 in. Working-pressure, 130 lb. per square inch; water capacity, 600 gallons; tractive power, 7,450 lb. Weight in working trim, 32 tons 10 cwt.

This engine ran on the pioneer New Zealand railway opened in the Canterbury Province in 1863 between Christchurch and Ferrymead (Heathcote) and Christchurch and Dunsandel. Gauge, 5 ft. 3 in. This engine, together with the greater part of the broad-gauge stock, was sold to the South Australian Government Railway in 1878.



OLD CLASS A TANK ENGINE, 0-4-0 TYPE.

Makers, Dubs and Co., Glasgow, 1873. Diameter of wheels, 2 ft. 6½ in.; cylinders, 8 in. by 15 in. Working-pressure, 120 lb. per square inch; tractive power, 3,000 lb. Water capacity, 250 gallons. Weight in working trim, 11½ tons.