



FIG. 8.—Taufusi Swamp, showing taro and tamu plants in which *Pinlaya kochi* breeds.



FIG. 9.—House and taro swamp, close to centre of Apia.

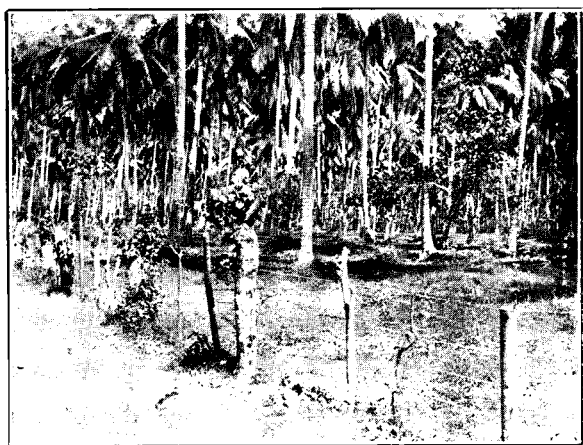


FIG. 10.—Fao-trees used as fence-posts, lopped and containing small rot-holes.



FIG. 11.—Coconut-palms with steps cut in them.