

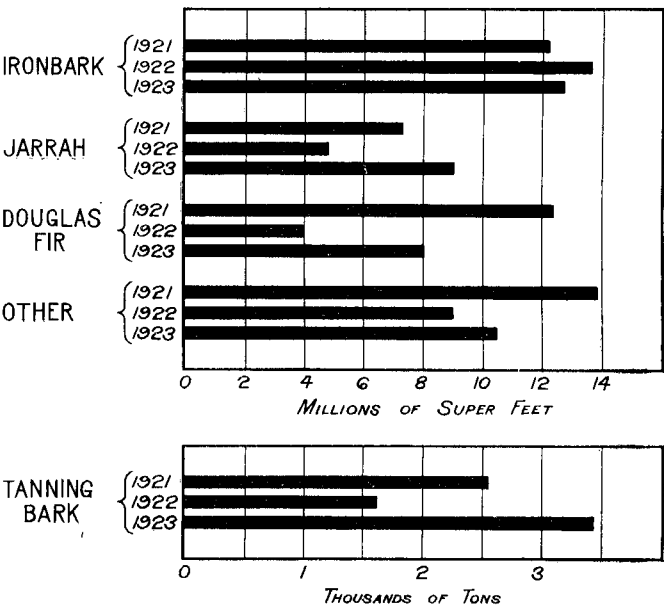
Import.

During the year ended 31st December, 1923, 40,319,363 superficial feet of timber were imported, compared with 31,341,641 superficial feet for the previous period, representing an increase of 28·4 per cent. The increase is largely accounted for by heavy shipments of jarrah and Douglas fir (Oregon pine), amounting to approximately double the quantities imported in 1922. Large numbers of poles, chiefly ironbark, continue to be imported for electric transmission and telegraph work.

Several small shipments of hemlock cheese-crates and apple-cases were landed during the year.

The average import value (all species) for the year ended 31st December, 1923, was 1s. 2d. per 100 superficial feet lower than for the year ended 31st December, 1922. The value of Douglas fir increased by 2s. 6d. per 100 superficial feet during the same period.

More than twice the quantity of tanning-bark was imported during 1923 than during 1922. but, fortunately, at a decreased price of more than £2 per ton.



GRAPH SHOWING IMPORTS FOR YEARS ENDED 31ST DECEMBER, 1921-23.

THE FOREST ATLAS.

The most important work in course of preparation during the year was the compilation of accurate working maps of each State forest in the Dominion, as required by section 25 of the Forests Act, 1921-22. In August last a definite policy was mapped out and put in action, and the results so far achieved are considered satisfactory. A base map is first plotted from information supplied by the Lands Department on a uniform scale of 20 chains to an inch, which shows the correct boundaries of the forests and all survey information available pertaining thereto, also all internal surveyed subdivisions, rivers, streams; omitting all approximately sketched details, as these are liable to lead to confusion when plotting the accurate internal details obtained by Forest officers. A tracing of this is then made and two white prints prepared. On the first of these is shown all licenses, leases, and types or stands, and on the second topography only. This information will be added to from time to time as cruising-work proceeds. For the year nineteen base maps and twenty-two tracings were completed. During the coming year it is intended to make a special feature of these maps in order that a complete record may be established.

On the 26th February the first series of maps was forwarded to the Surveyor-General for his certificate in terms of section 25 of the Forests Act, 1921-22.

Seven hundred and fifty copies of a standard-size plan sheet drawn up in this office were printed and distributed in regional offices. Three maps of New Zealand, showing region boundaries, &c., were lithographed and 550 copies received. These have been used extensively for illustrating reports and showing localities. The activities of the staff have for a considerable time past been directed towards the work of finalizing the Forest Inventory, this work taking precedence over all other except that of a very urgent nature. This work included the calculation of areas of the various species or stands and classified land in all regions; the preparation of maps, graphs, and tracings, of which a total of 188 have been prepared.

Work accomplished.

Tracings prepared	231	White prints	462
Graphs prepared	155	Lithos amended and coloured	195
Maps mounted	52	Miscellaneous drawings	14

Two new wall index maps commenced.

Various circulars have been forwarded to Conservators, with a view to standardizing plan work in District Offices.