



FIG. 1. Photograph showing the "outfit" used for treatment. Note the small dippers of 3 cc. and 1 c.c. capacity for measuring doses of carbon tetrachloride and the aluminium cups. By forming up the Natives in rows, according to size rather than to age, and using the dippers and a supply of cups, it is possible to treat large numbers in a very short time.

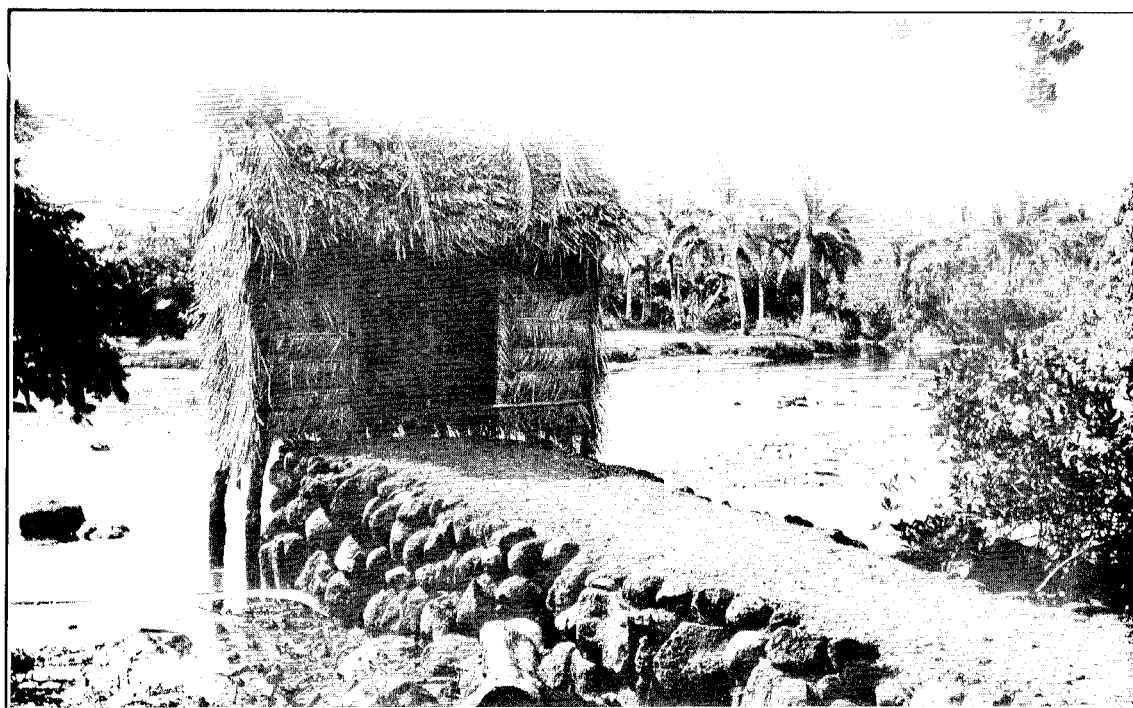


FIG. 2. Native "drop" latrine which is being installed where possible in villages on the coast.