

service is appreciated by the private tree-planter. Despite extensive and widespread advertising carried out during the year, the number of orders received and analysis of the sales made in various districts show that there are possibilities of still greater extension. Many appreciative letters were received commenting upon the quality of the trees and seeds supplied, and the success obtained by many planters with trees supplied during the previous season is likewise known to be very satisfactory. Numerous inquiries for advice were answered during the year, and a large number of specimens were identified for applicants.

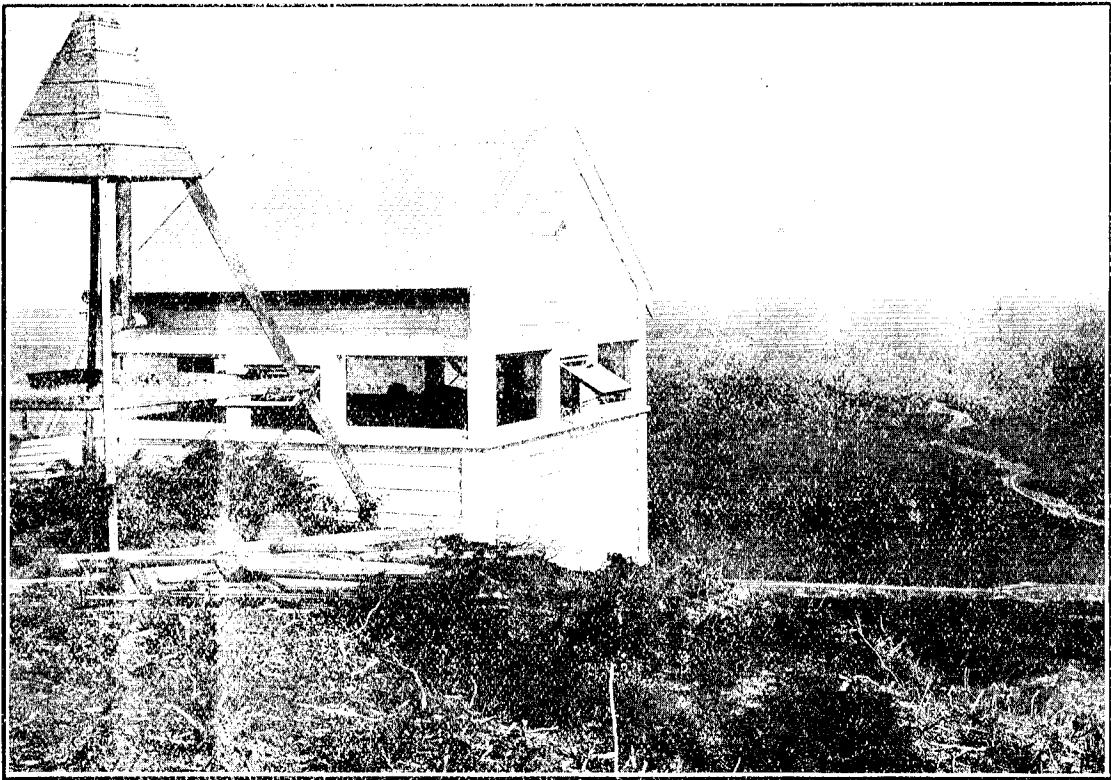
REVENUE.

Following are particulars of revenue from nursery and plantations received during the last two years :-

| | | | | 1922 23. | | | 1921 22. | | |
|-------------------------------|----|----|----|----------|----|----|----------|----|----|
| | | | | £ | s. | d. | £ | s. | d. |
| Sales of trees | .. | .. | .. | 3,121 | 7 | 7 | 1,530 | 13 | 3 |
| Sales of tree-seeds | .. | .. | .. | 574 | 16 | 2 | 370 | 16 | 7 |
| Sales of firewood | .. | .. | .. | 2 | 0 | 0 | 2 | 0 | 0 |
| Sales of posts, &c. | .. | .. | .. | .. | .. | .. | 0 | 12 | 0 |
| Grazing | .. | .. | .. | 207 | 15 | 9 | 150 | 10 | 10 |
| Rent of departmental cottages | .. | .. | .. | 374 | 8 | 9 | 380 | 6 | 9 |
| Sundries | .. | .. | .. | 130 | 11 | 4 | 11 | 8 | 9 |
| | | | | <hr/> | | | <hr/> | | |
| | | | | £4,110 | 19 | 7 | £2,446 | 8 | 2 |
| | | | | <hr/> | | | <hr/> | | |

FIRE PROTECTION.

Organization for the prevention and control of fires has now reached a high state of efficiency, and in addition to the previously existing methods of control two fire districts have been declared. The past season has not, however, been a dangerous one, for frequent rain was experienced throughout the summer, and it was only during the month of October that the weather conditions were such as to cause any anxiety. During that month very dry conditions prevailed, accompanied by high wind,



GUARDING THE STATE FORESTS FROM FIRE: A LOOKOUT STATION OVERLOOKING KAINGAROA AND WAIOEAPU PLANTATIONS.

[State Forest Service, photo.]

and several fires which occurred in unoccupied land outside plantation reserves had to be extinguished in order to prevent their becoming a danger to the plantations. Fire-protection measures, including lookout, patrol, and fire-breaks, cost on an average 3s. 4d. per acre over the 30,023 acres planted in the Rotorua conservation region.

THINNING PLANTATIONS.

A considerable area of the plantations now require thinning, and it is intended to commence this work at an early date. The material will be sold on a stumpage basis, and the felling done by the purchaser after the trees are marked by a ranger.

TREE-PLANTING PROPOSALS FOR 1923 24.

Preparations for planting an area of 3,800 acres with 2,600,000 trees are completed. Planting will be commenced early in the year.